

FOR LEASE

STATELINE 95

HARDEEVILLE COMMERCE PARK

Hardeeville, SC 29927

AVAILABLE
NOW:

268,136 SF

CLASS-A REAR LOAD



50,000 TO
268,136 SF
AVAILABLE



0.2 MILES TO
INTERSTATE-95



15 MILES
TO PORT



DISCRETIONARY
INCENTIVES
AVAILABLE



PILOT TAX
PROGRAM



GTIS PARTNERS

CBRE

AERIAL



Whyte Hardee Boulevard (Highway 17)

15 Miles to Port of Savannah >>

10 Miles to Savannah >>

INTERSTATE 95

INTERSTATE 95

STATELINE 95

POTENTIAL EXPANSION OF PROSPER PARKWAY

Wendy's

Speedway

BURGER KING

BU Best Western

QT QuikTrip

WAFLE HOUSE

EconoLodge

Quality

Advance Auto Parts

DOLLAR GENERAL

NAPA KNOW HOW

Super 8

Shell

Red Roof

U-HAUL

Sleep INN

Days Inn

bp

SUBWAY

Pilot FLYING J

Paynesville Road

Mockingbird Drive

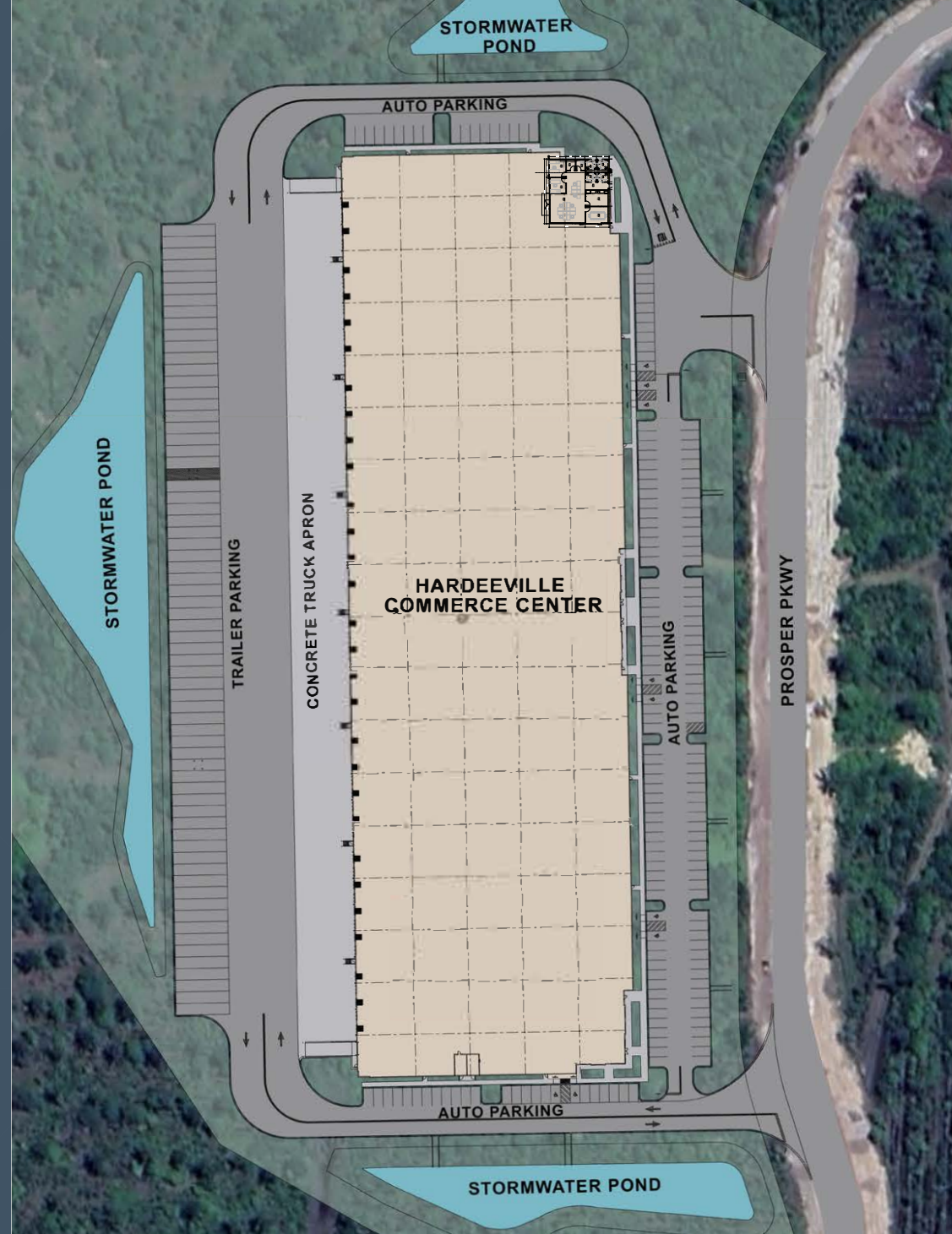
Hummingbird Lane

CSX Railroad (100' Right-of-Way)

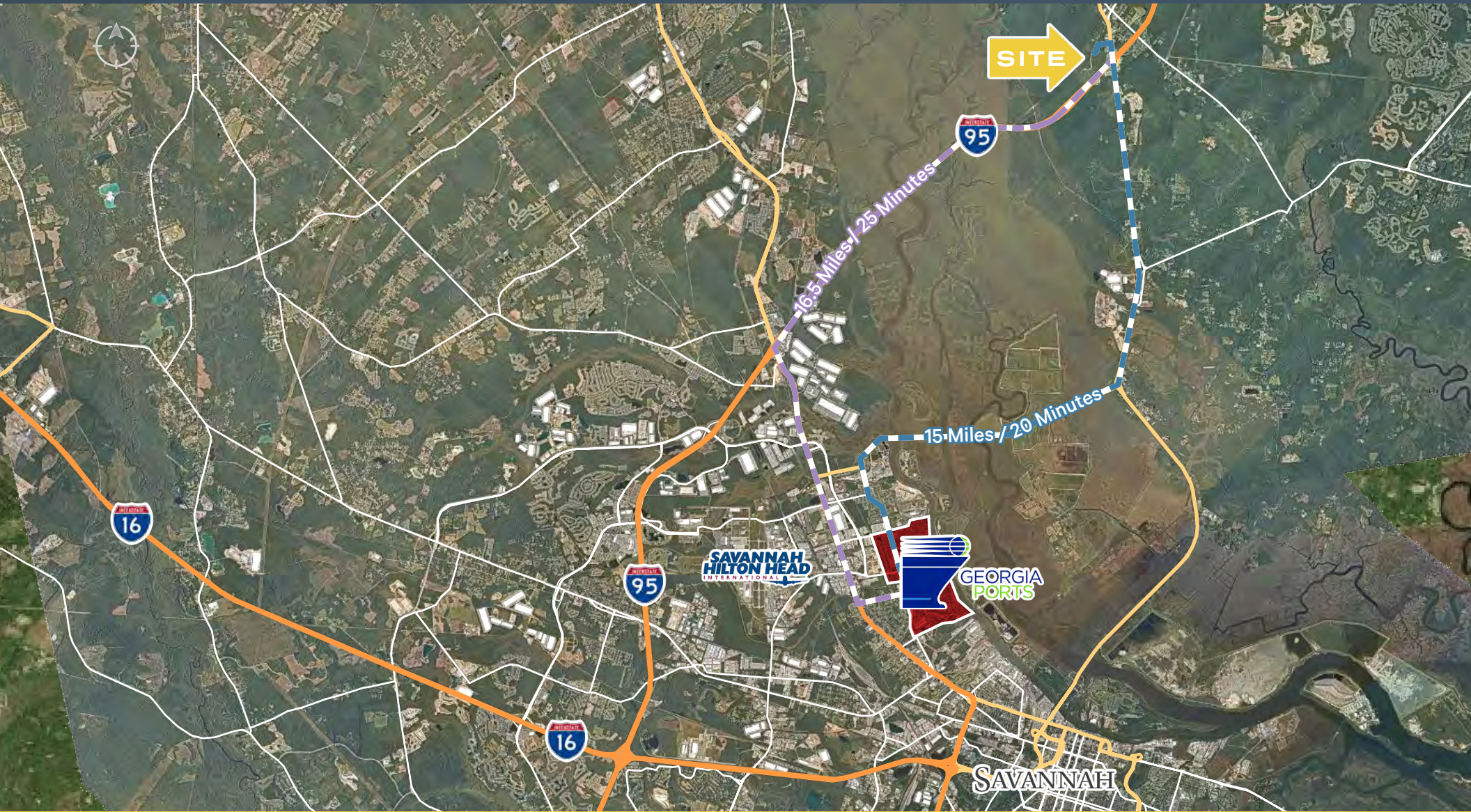


BUILDING FEATURES

FOOTPRINT:	268,136 SF
BUILDING DIMENSIONS:	952' x 285'
BAY SIZING:	54' x 56' with 54' x 60' speed bay
DOCK POSITIONS:	57
DOCK EQUIPMENT:	(29) 40k lbs pit levelers with brush seals and bumpers
CLEAR HEIGHT:	36'
PARKING:	66 trailer stalls (180 auto)
DRIVE-IN DOORS:	2
LIGHTING:	30 FC
POWER:	2000 amps
SPEC OFFICE:	1,798 SF



SUPERIOR LOGISTICS LOCATION



» 0.2 miles from
Interstate-95

» 15 miles to Port of Savannah
via Highway 17

» 16.5 miles to Port of Savannah
via Interstate-95

» 18.8 miles to
Interstate-16

PORT HIGHLIGHTS

SAVANNAH: GATEWAY TO AMERICAN COMMERCE

- » **44% of U.S. consumers and manufacturers are best served from the Port of Savannah**




STRATEGIC DISTRIBUTION HUB

- » Multimodal hub fueled by proximity to the Port of Savannah, regional interstate system linking the area to Atlanta and Florida, and Class I rail service from both Norfolk Southern and CSX
- » Located on the I-95 corridor with direct access to the Florida markets, the Carolinas, Eastern seaboard and Atlanta population center via I-16
- » Largest concentration of break bulk import distribution centers on the East coast
- » Home to Fort Stewart, the largest US Army installation east of the Mississippi, which also provides a highly trained labor base as soldiers exit the military and join the civilian labor force
- » Skilled workforce of more than 453,000 within a 60-mile radius, fueled in part by Georgia Southern University, nearby Fort Stewart and Hunter Army Airfield, and other colleges, universities, and industry ecosystems such as aerospace

PORT OF SAVANNAH

- » The third largest container volume and the fastest-growing container port by TEU's in the U.S
- » The Port's Garden City Terminal is the largest single container terminal in North America
- » The Terminal covers 1,345 acres with 9,693 ft of contiguous berthing space and 36 ship-to-shore cranes with 42 additional Neo-Panamax cranes expected by 2028. The facility will be able to move nearly 1,300 containers per hour assuming all cranes are moving, and 14,000 truck moves daily. (7,000 containers in, 7,000 containers out)
- » The \$1.4 billion Savannah Harbor Expansion Project (SHEP) has recently deepened its navigation channel from 42 feet to 47 feet, enabling larger and heavier vessels to call on the port
- » Rail connectivity to every major destination east of the Mississippi via two Class I railroads, Norfolk Southern and CSX Transportation
- » The Mason Mega Rail Project is now complete and operates as the largest on-dock intermodal rail facility for a port authority in North America, doubling the Port of Savannah's rail lift capacity to 1 million TEU's per year
- » The Port of Savannah ended fiscal year 2022 in June with a record breaking 5.76 million TEU's, an 8% increase over fiscal year 2021:
 - 1.5M TEU's in Q1 FY 2023 (July-September) an increase of 9.6% year over year
 - Garden City Terminal West Project will add another 1M TEU's of container yard capacity in phases during 2023 and 2024
 - Capacity will increase by 60% to 9.5M TEU's by 2025

SOUTH CAROLINA BUSINESS ENVIRONMENT

- 
- » Strong FILOT (Fee in lieu of taxes) property tax abatement program in place. This allows to understand total occupancy costs with the peace of mind that property taxes won't change during occupancy.
 - » Jasper County, SC is a Tier III County which provides a Jobs Tax Credit of \$21,250 per new job created
 - » South Carolina has one of the lowest corporate income tax rates (5%) in the Southeast along with numerous credits and methods to reduce and eliminate corporate income tax liability
 - » The project is located within Foreign-Trade Zone 104. This lowers the costs of U.S. based operations engaged in international trade thus providing a secure, efficient, and profitable way to compete effectively in domestic and global markets
 - » Like Georgia's effective Quick Start workforce training program, South Carolina has ReadySC as their platform which creates incredible opportunities for new and expanding companies
 - » Opportunity to pull from the labor pool of Jasper County, shortening the commutes of those travelling to Savannah for employment. There is also a strong military presence due to the proximity of MCAS Beaufort and Parris Island, which together transition around 2,000 soldiers into the civilian workforce annually

FOR LEASE

STATELINE 95

HARDEEVILLE COMMERCE PARK

Hardeeville, SC 29927



FOR MORE INFORMATION, PLEASE CONTACT:

Preston Andrews
First Vice President
+1 912 484 1510
preston.andrews@cbre.com

William Lattimore, SIOR
Executive Vice President
+1 912 596 7019
william.lattimore@cbre.com

CBRE, Inc.
144 Habersham Street, Savannah, GA 31401
+1 912 228 3528
www.cbre.com/savannah

© 2026 CBRE, Inc. This information has been obtained from sources believed reliable. We have not verified it and make no guarantee, warranty or representation about it. Any projections, opinions, assumptions or estimates used are for example only and do not represent the current or future performance of the property. You and your advisors should conduct a careful, independent investigation of the property to determine to your satisfaction the suitability of the property for your needs. CBRE and the CBRE logo are service marks of CBRE, Inc. and/or its affiliated or related companies in the United States and other countries. All other marks displayed on this document are the property of their respective owners.



GTIS PARTNERS

CBRE