

4820 SOUTH MILL AVENUE

FOR LEASE

Turnkey office space prominently located along Mill Avenue near the heart of Tempe, Arizona.

TEMPE, ARIZONA 85282

±3,793 SF

AVAILABLE

\$22.00

LEASE RATE

4820 S MILL AVE

AMPLE PARKING RATIO OF 4.5/1,000 SF WITH COVERED CANOPY AVAILABLE



OFFICE FEATURES

High visibility facing Mill Ave

Monument Signage available

Turnkey office suites

Ample parking ratio of 4.5/1,000 SF with covered canopy available

Full-Service lease type

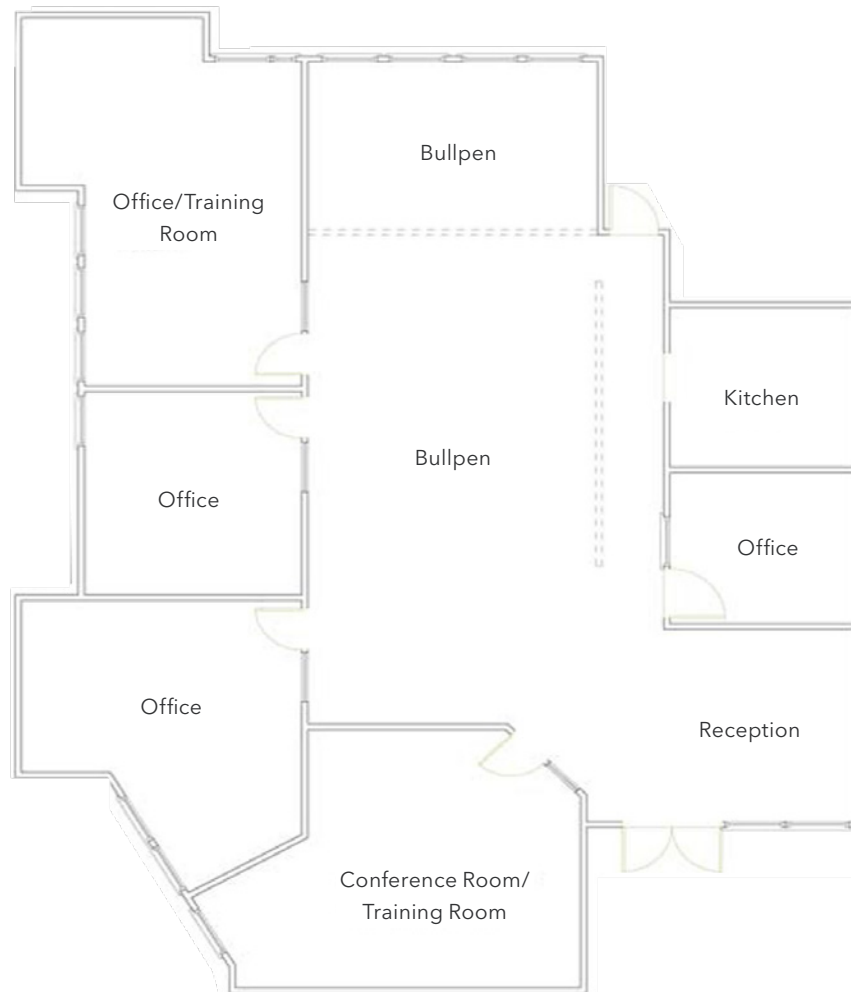
\$22.00

LEASE RATE

±3,793 SF

SQUARE FEET

SUITE 203



±2,115 SF

AVAILABLE

\$22.00

LEASE RATE (SF/YR)

NOW

AVAILABLE

SUITE 204

±1,678 SF

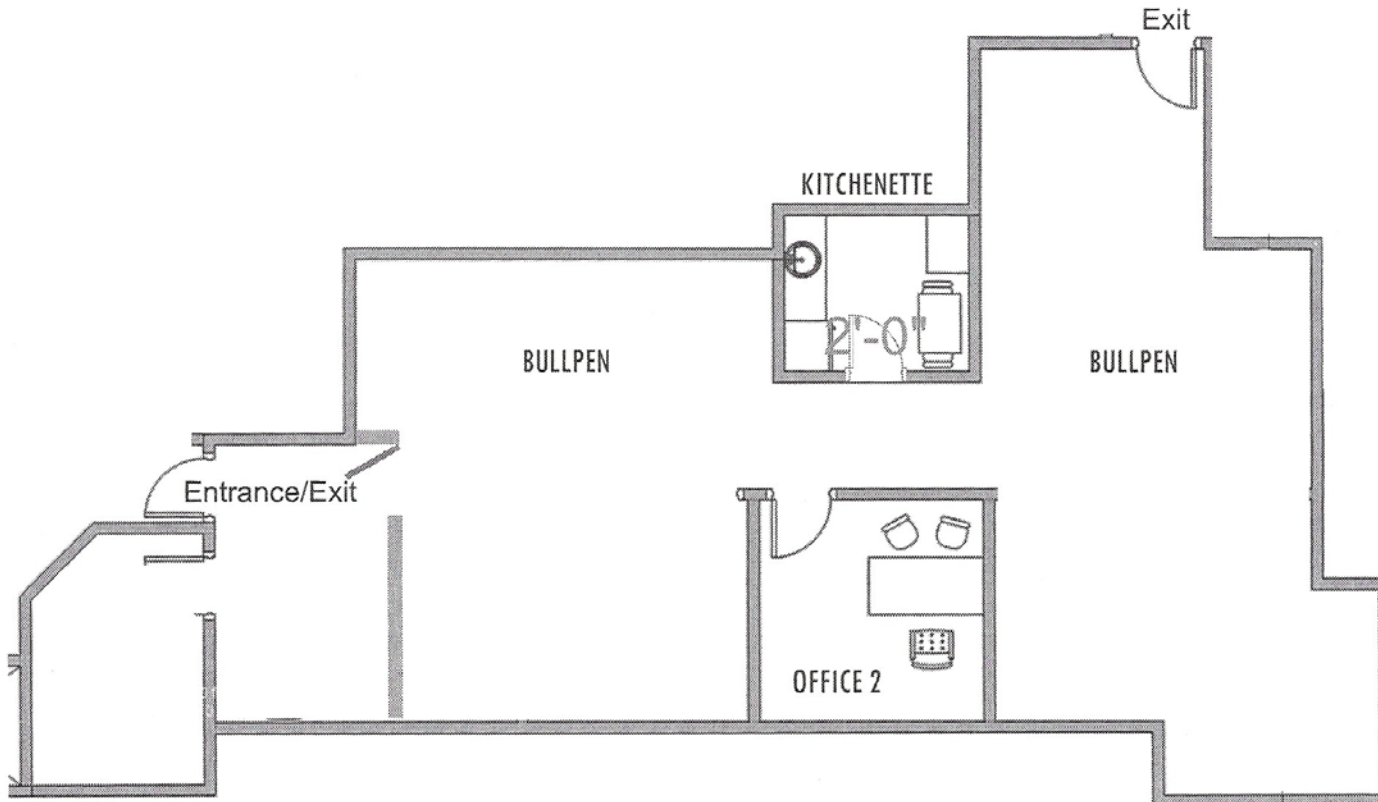
AVAILABLE

\$22.00

LEASE RATE (SF/YR)

NOW

AVAILABLE



HIGHLY-DESIRABLE LOCATION

Close to Arizona State University, Phoenix Sky Harbor International Airport, numerous retail amenities and recreational activities.

Conveniently located near major confluences Interstate 10, Highway 143, and Highway 60

Easy for visitors to locate

Within a bustling commercial district

4 MIN
INTERSTATE 10

7 MIN
ARIZONA STATE UNIVERSITY





4820 SOUTH MILL AVENUE

*For more information on
this property, please contact*

KURT KERNER
602.513.5171
kurt.kerner@kidder.com

KIDDER.COM

This information supplied herein is from sources we deem reliable. It is provided without any representation, warranty, or guarantee, expressed or implied as to its accuracy. Prospective Buyer or Tenant should conduct an independent investigation and verification of all matters deemed to be material, including, but not limited to, statements of income and expenses. Consult your attorney, accountant, or other professional advisor.

