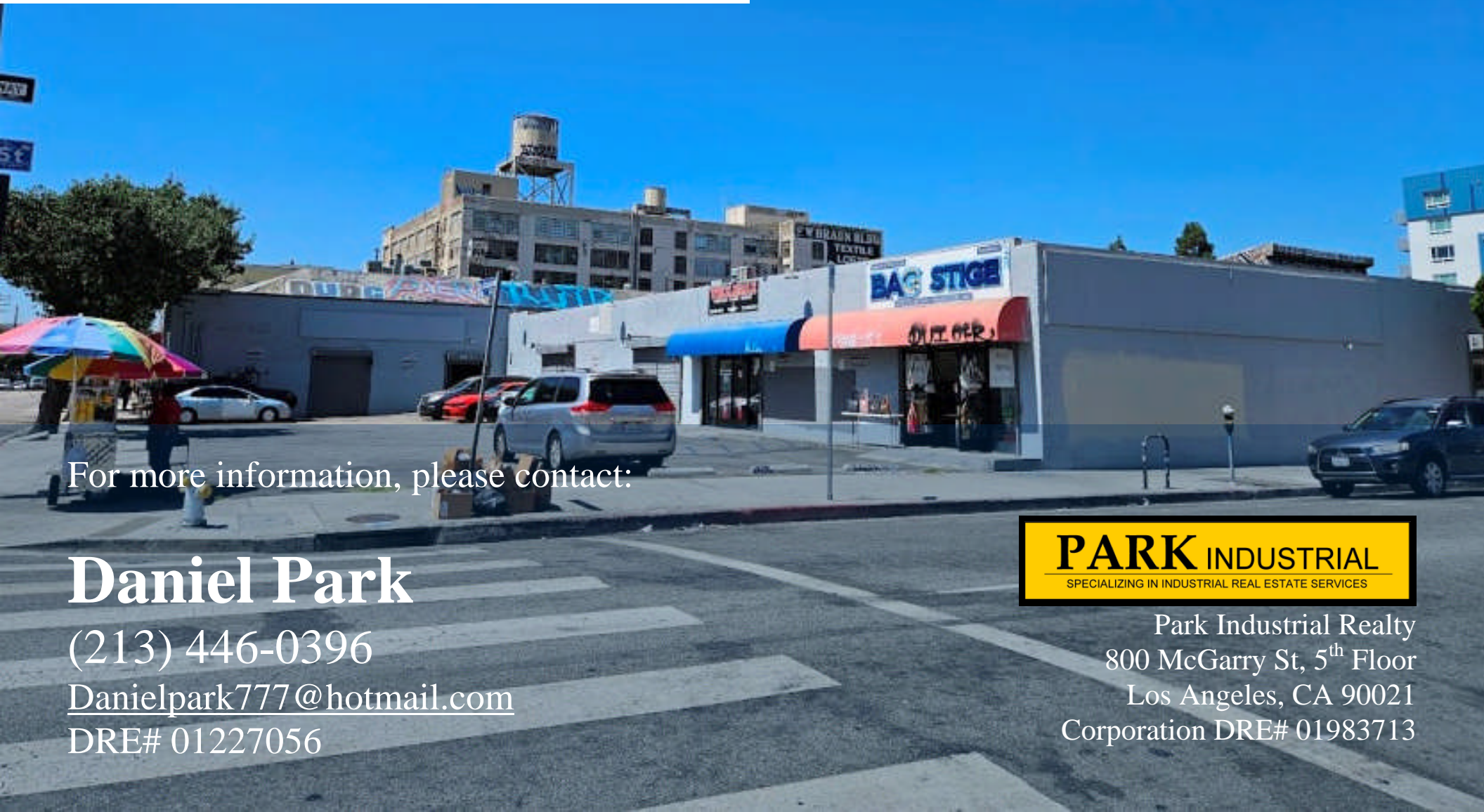


FOR LEASE

**1201 S LOS ANGELES ST
LOS ANGELES, CA 90015**

**±4,891 SF
RETAIL/WHOLESALE**



For more information, please contact:

Daniel Park

(213) 446-0396

Danielpark777@hotmail.com

DRE# 01227056

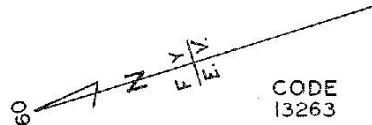
PARK INDUSTRIAL
SPECIALIZING IN INDUSTRIAL REAL ESTATE SERVICES

Park Industrial Realty
800 McGarry St, 5th Floor
Los Angeles, CA 90021
Corporation DRE# 01983713

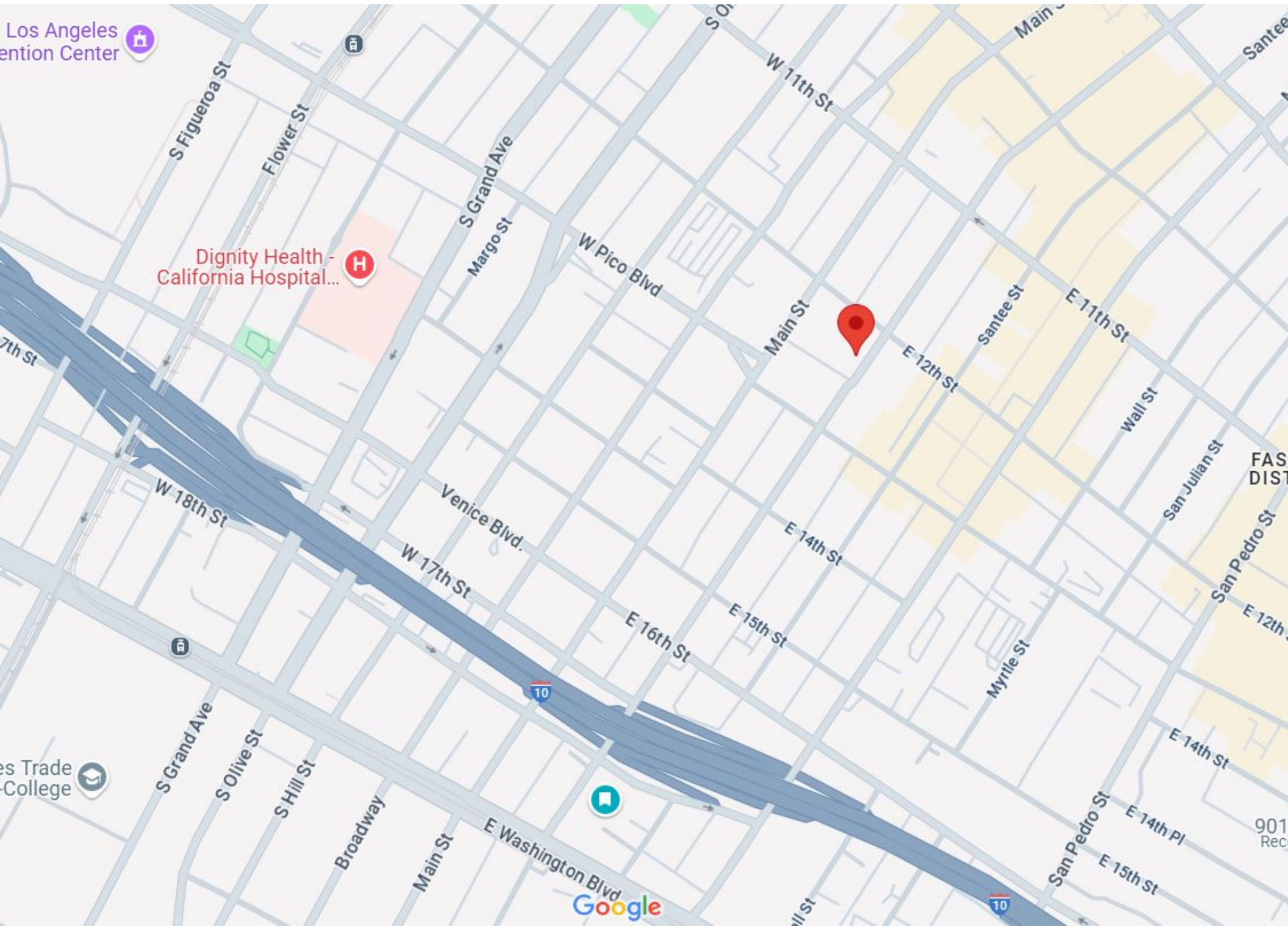
Available SF:	4,891 SF	• Prime signalized corner location in Downtown LA's South Park
Year Built:	1947	
Clear Height:	12' to 16 '	• Ideal for retail, wholesale, or showroom use with storage or industrial component
# Parking:	3	• Excellent visibility and street presence for branding and signage
Loading:	1 GL	
Zoning:	M2	• Convenient on-site front parking for customers and staff
Lease Rate/Mo:	\$5,700 (\$1.16/SF) Gross	• Easily accessible from major freeways
		• Strong foot and vehicle traffic in a rapidly developing urban corridor

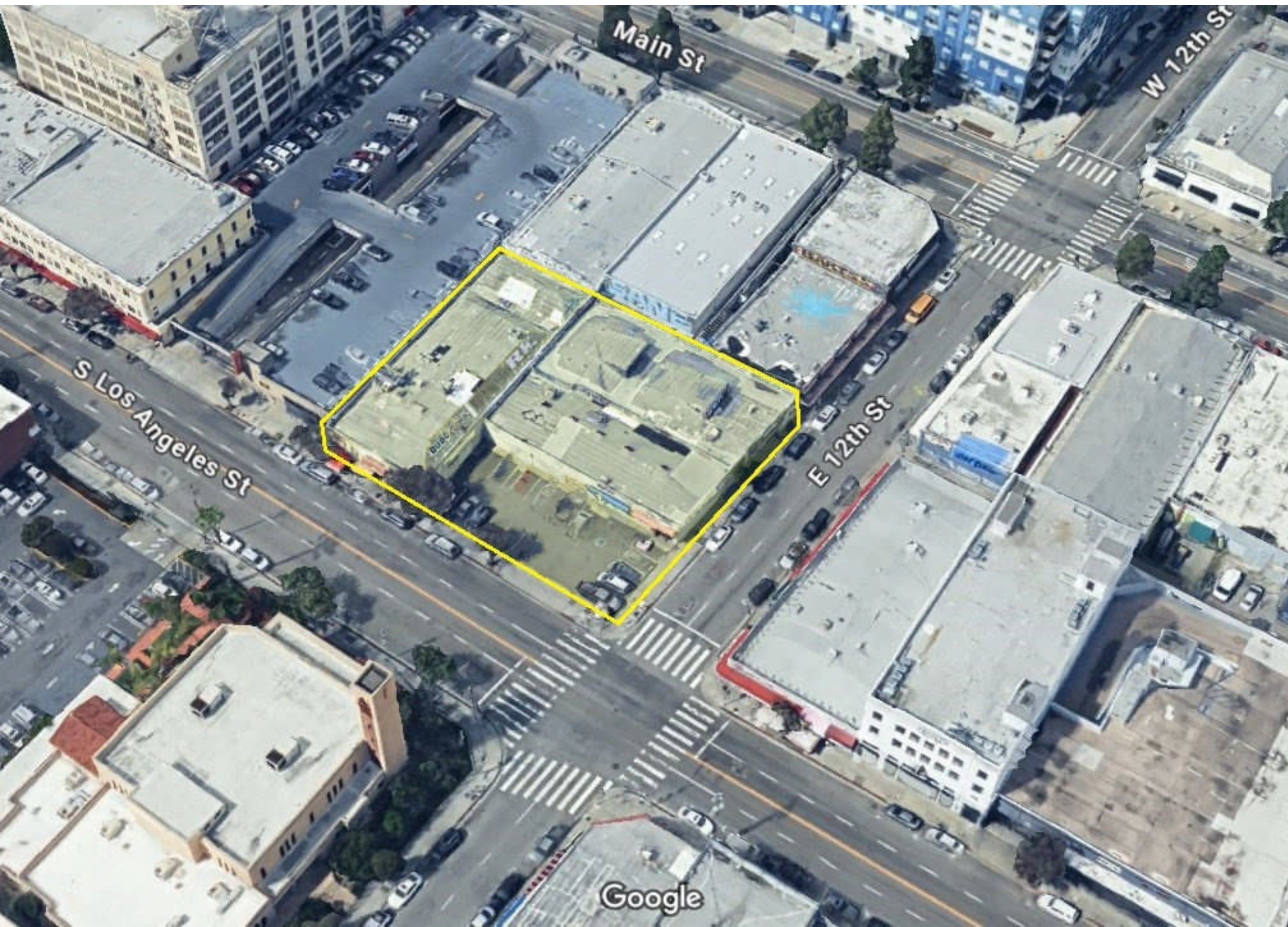
All information has been furnished from sources which we deem reliable, but for which we assume no liability. All measurements are approximate. Broker/Owner do not warrant its accuracy. Buyer/Lessee must verify all information.

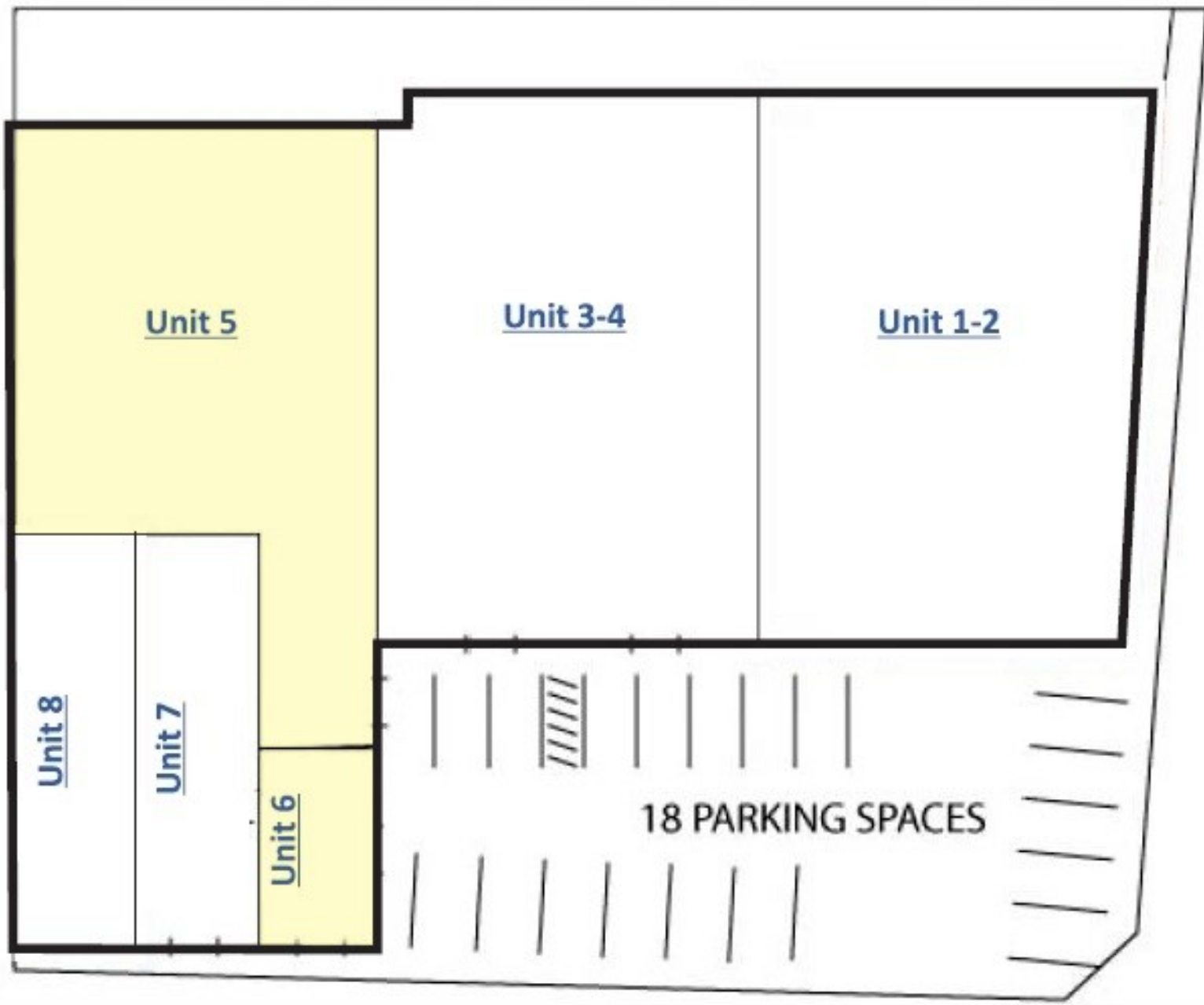
5139	27
SCALE 1" = 60'	



MILLS' SUBDIVISION
LOT NO. 1 DE CEMI
VINEYARD TRACT
M. R. 5-4







E 12th St

S Los Angeles St



FOR LEASE | ±4,891 SF Retail/Wholesale

1201 S Los Angeles St #5-6



