

BETHUY ROAD IRA TWP., MICHIGAN

LAND FOR SALE
5.95 Acres Available



**SIGNATURE
ASSOCIATES**
KNOW SIGNATURE | KNOW RESULTS



PROPERTY FEATURES

- 5.95 acres available
- Zoned I-2
- Great location
- Asking Price: \$600,000 (\$100,840.34/acre)



For more information, please contact:

CHRIS MONSOUR
(248) 948 0107
cmonsour@signatureassociates.com

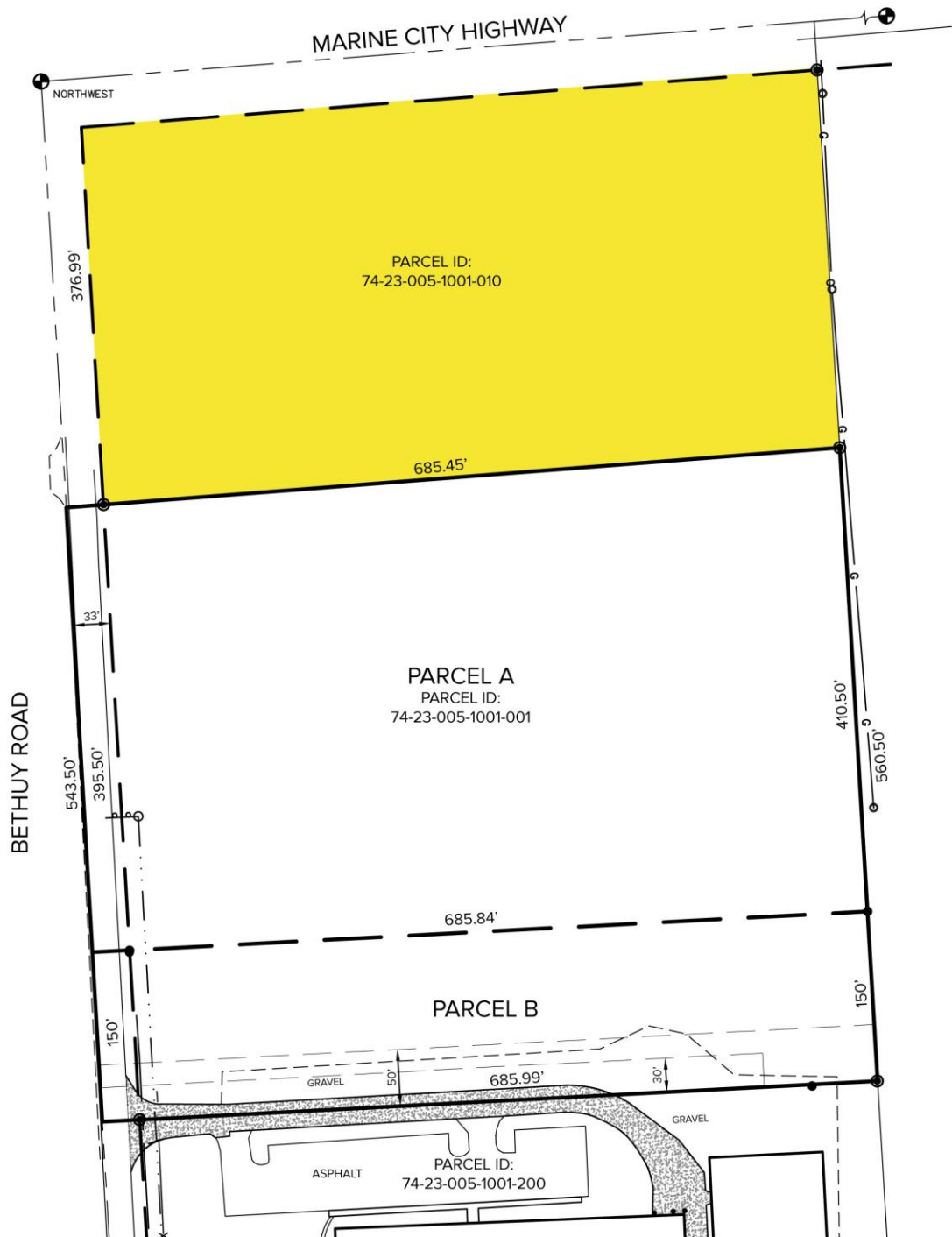
SIGNATURE ASSOCIATES
One Towne Square, Suite 1200
Southfield, MI 48076
www.signatureassociates.com

Bethuy Road – Ira Twp., Michigan

Land For Sale

5.95
Acres
AVAILABLE

Site Plan



For more information, please contact:

CHRIS MONSOUR
(248) 948 0107
cmonsour@signatureassociates.com

SIGNATURE ASSOCIATES
One Towne Square, Suite 1200
Southfield, MI 48076
www.signatureassociates.com