

FOUNDRY  
COMMERCIAL



ORLANDO, FL

# SAND LAKE WEST

±2,053 - 10,727 RSF AVAILABLE FOR LEASE



7500 - 7829 MUNICIPAL DRIVE, ORLANDO, FL

## SAND LAKE WEST PHASE III



### PROPERTY FEATURES

- Well located garden office / flex with upgraded landscaping
- 100% office available
- Grade-level doors
- Suite and partial building signage available
- Individual entrance/access
- Easy access to I-4, airport, Sand Lake Road, Kirkman Road, and International Drive
- On-campus management
- 100+ restaurants within 1 mile

#### FOR MORE INFORMATION, PLEASE CONTACT:

ALEX ROSARIO | 407.540.7713

Partner  
Alex.Rosario@foundrycommercial.com  
Licensed Real Estate Broker

KEVIN WILL | 407.458.5888

Vice President  
Kevin.Will@foundrycommercial.com  
Licensed Real Estate Broker

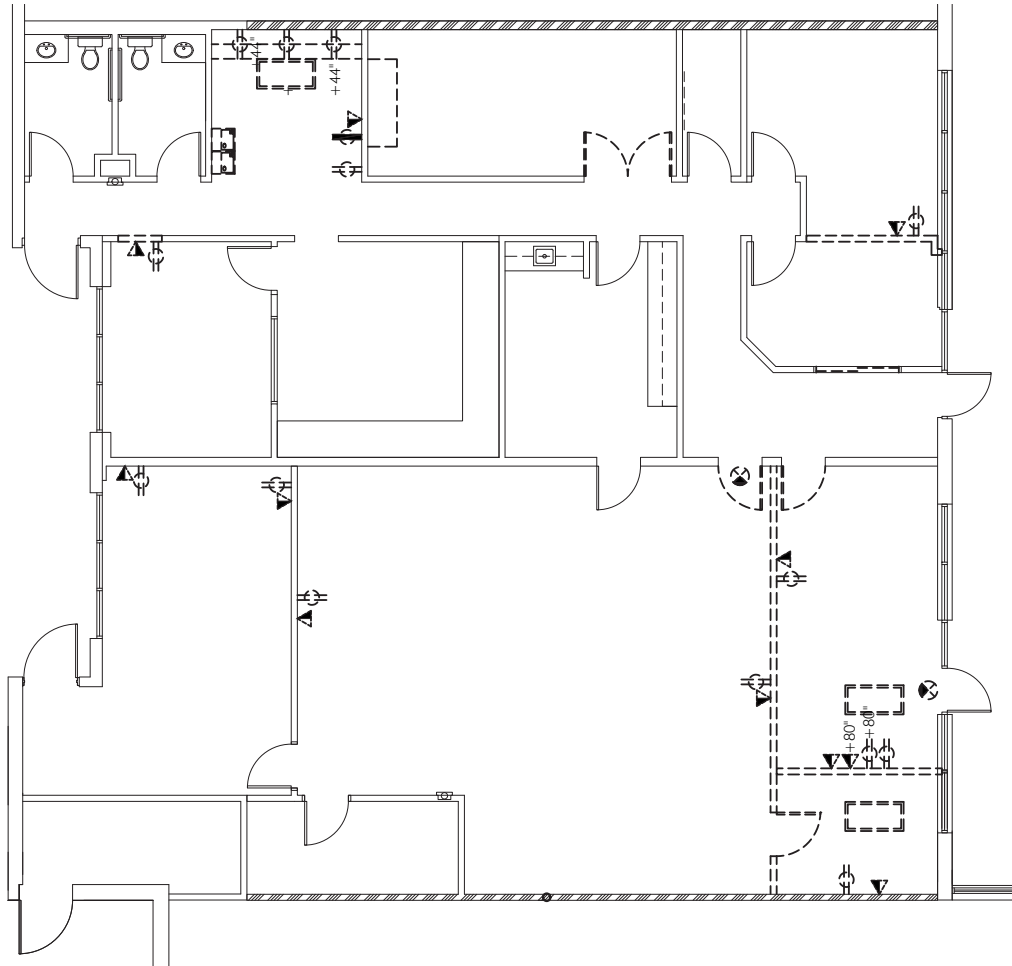
**FOUNDRY**  
COMMERCIAL

Although the information contained herein was provided by sources believed to be reliable, Foundry Commercial makes no representation, expressed or implied, as to its accuracy and said information is subject to errors, omissions or changes.

[foundrycommercial.com](https://www.foundrycommercial.com)

# SAND LAKE WEST | PHASE III S

**SUITE 7688: 3,680 SF**



**FOR MORE INFORMATION, PLEASE CONTACT:**

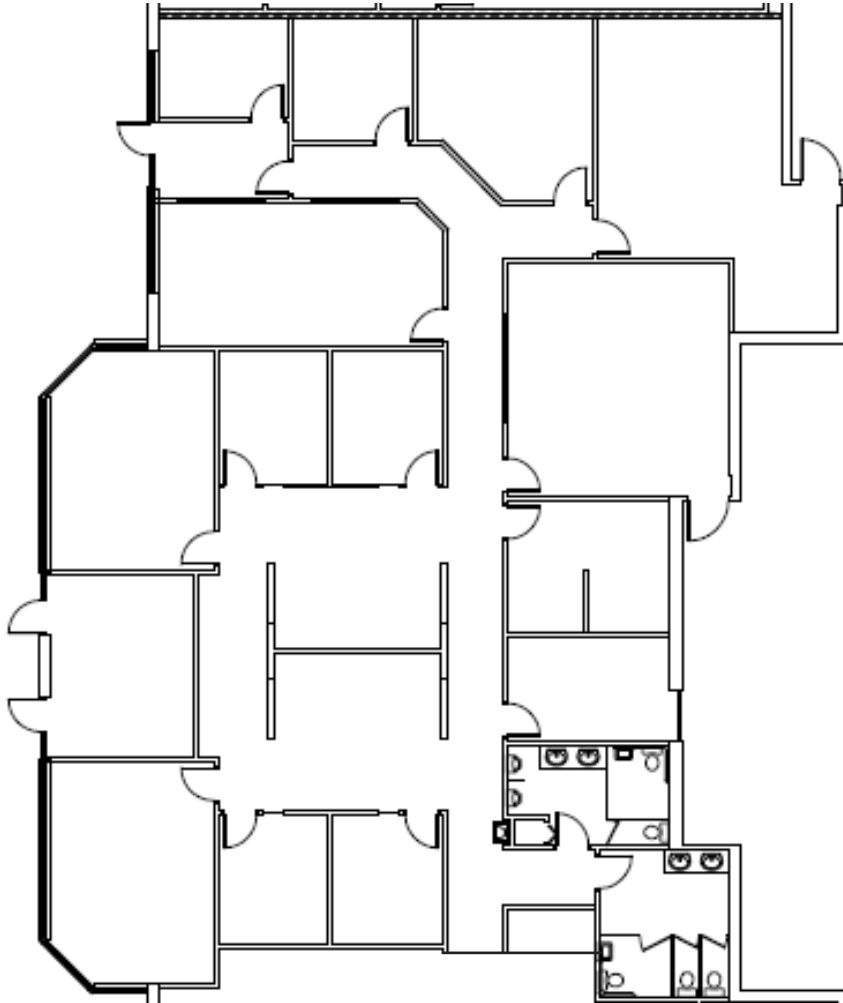
**ALEX ROSARIO | 407.540.7713**  
Partner  
Alex.Rosario@foundrycommercial.com  
Licensed Real Estate Broker

**KEVIN WILL | 407.458.5888**  
Vice President  
Kevin.Will@foundrycommercial.com  
Licensed Real Estate Broker



# SAND LAKE WEST | PHASE III S

**SUITE 7657: 5,538 SF**



**FOR MORE INFORMATION, PLEASE CONTACT:**

ALEX ROSARIO | 407.540.7713  
Partner  
Alex.Rosario@foundrycommercial.com  
Licensed Real Estate Broker

KEVIN WILL | 407.458.5888  
Vice President  
Kevin.Will@foundrycommercial.com  
Licensed Real Estate Broker

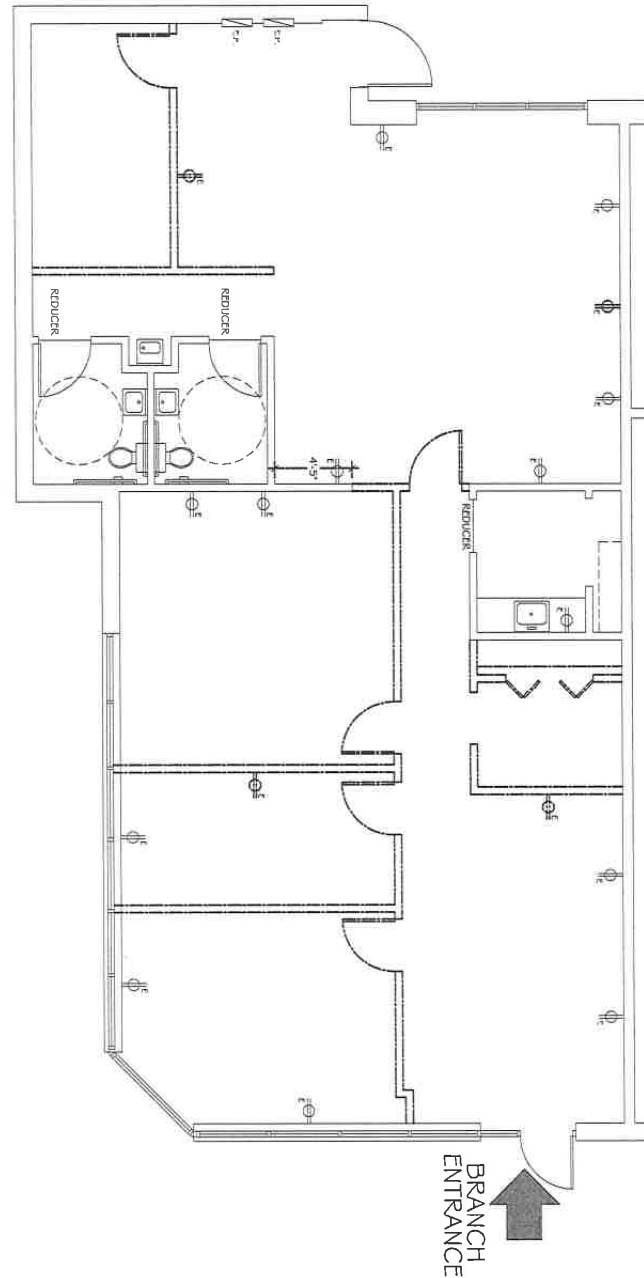
Although the information contained herein was provided by sources believed to be reliable, Foundry Commercial makes no representation, expressed or implied, as to its accuracy and said information is subject to errors, omissions or changes.

**FOUNDRY**  
COMMERCIAL

[foundrycommercial.com](http://foundrycommercial.com)

# SAND LAKE WEST | PHASE III N

**SUITE 7556: 2,053 SF AVAILABLE 8/1/26**



**FOR MORE INFORMATION, PLEASE CONTACT:**

**ALEX ROSARIO | 407.540.7713**  
Partner  
Alex.Rosario@foundrycommercial.com  
Licensed Real Estate Broker

**KEVIN WILL | 407.458.5888**  
Vice President  
Kevin.Will@foundrycommercial.com  
Licensed Real Estate Broker

**FOUNDRY**  
COMMERCIAL



5422 CARRIER DRIVE, ORLANDO, FL

## SAND LAKE WEST PHASE IV



### PROPERTY FEATURES

- Well located garden office / flex with upgraded landscaping
- Abundant parking
- 100% HVAC
- Easy access to I-4 Sand Lake Road, Kirkman Road, and International Drive
- On-campus management
- 100+ restaurants within 1 mile

#### FOR MORE INFORMATION, PLEASE CONTACT:

ALEX ROSARIO | 407.540.7713

Partner  
Alex.Rosario@foundrycommercial.com  
Licensed Real Estate Broker

KEVIN WILL | 407.458.5888

Vice President  
Kevin.Will@foundrycommercial.com  
Licensed Real Estate Broker

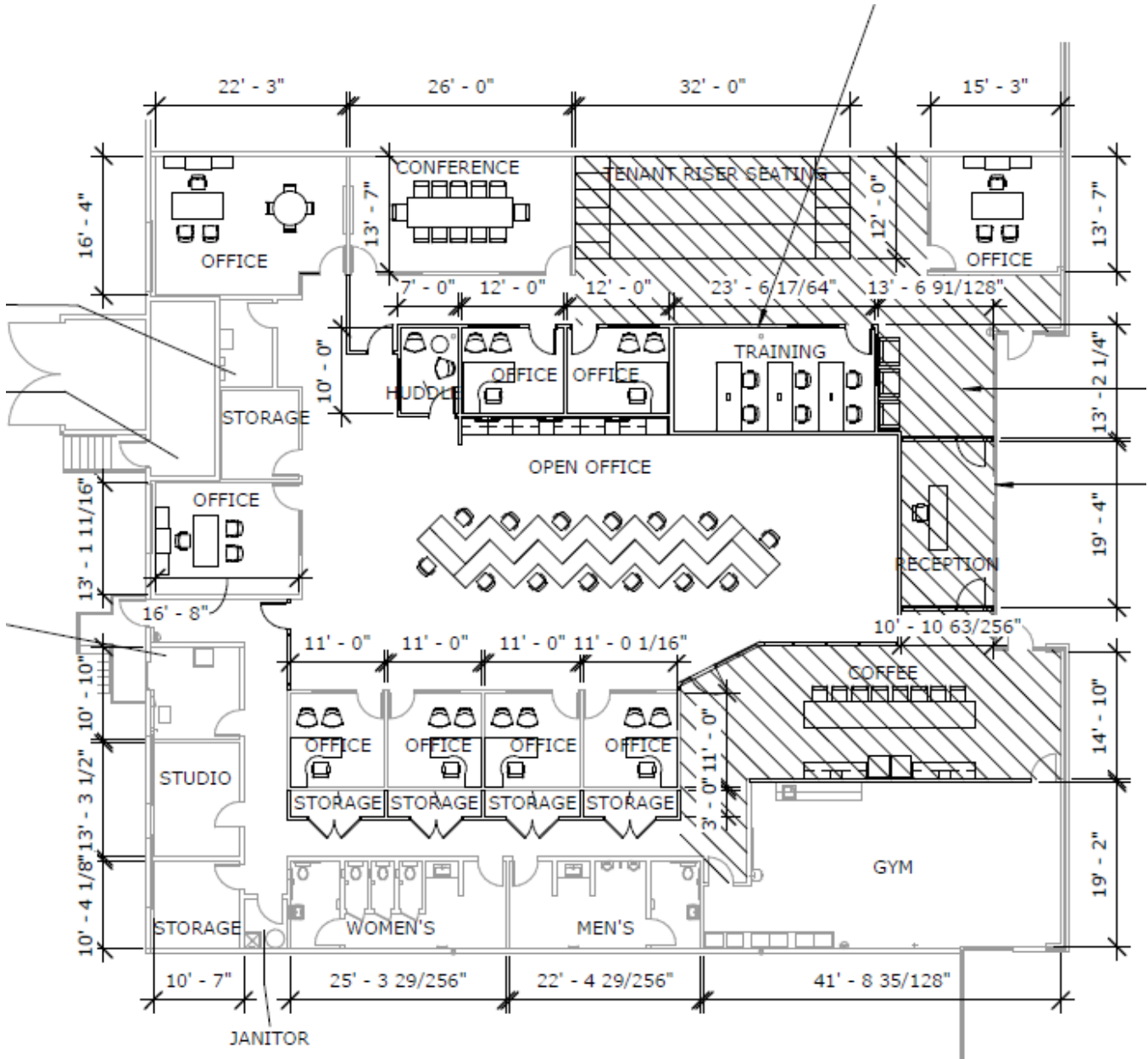
Although the information contained herein was provided by sources believed to be reliable, Foundry Commercial makes no representation, expressed or implied, as to its accuracy and said information is subject to errors, omissions or changes.

**FOUNDRY**  
COMMERCIAL

[foundrycommercial.com](https://foundrycommercial.com)

# SAND LAKE WEST | PHASE IV

**SUITE 104-106: 9,744 SF AVAILABLE 11/1/26**



FOR MORE INFORMATION, PLEASE CONTACT:

ALEX ROSARIO | 407.540.7713  
 Partner  
 Alex.Rosario@foundrycommercial.com  
 Licensed Real Estate Broker

KEVIN WILL | 407.458.5888  
 Vice President  
 Kevin.Will@foundrycommercial.com  
 Licensed Real Estate Broker





7305 - 7353 GREENBRIAR PARKWAY ORLANDO, FL  
**SAND LAKE WEST  
PHASE V**



### PROPERTY FEATURES

- Modern architecture with full-height glass
- 100% office and A/C with ability for grade level roll-up doors
- Two minute drive to I-4 and International Drive
- Overflow parking lot available (4-5/1,000 parking)
- Monument signage available
- Class A finishes
- On-campus management
- 100+ restaurants within 1 mile

#### FOR MORE INFORMATION, PLEASE CONTACT:

ALEX ROSARIO | 407.540.7713

Partner  
Alex.Rosario@foundrycommercial.com  
Licensed Real Estate Broker

KEVIN WILL | 407.458.5888

Vice President  
Kevin.Will@foundrycommercial.com  
Licensed Real Estate Broker

**FOUNDRY**  
COMMERCIAL

Although the information contained herein was provided by sources believed to be reliable, Foundry Commercial makes no representation, expressed or implied, as to its accuracy and said information is subject to errors, omissions or changes.

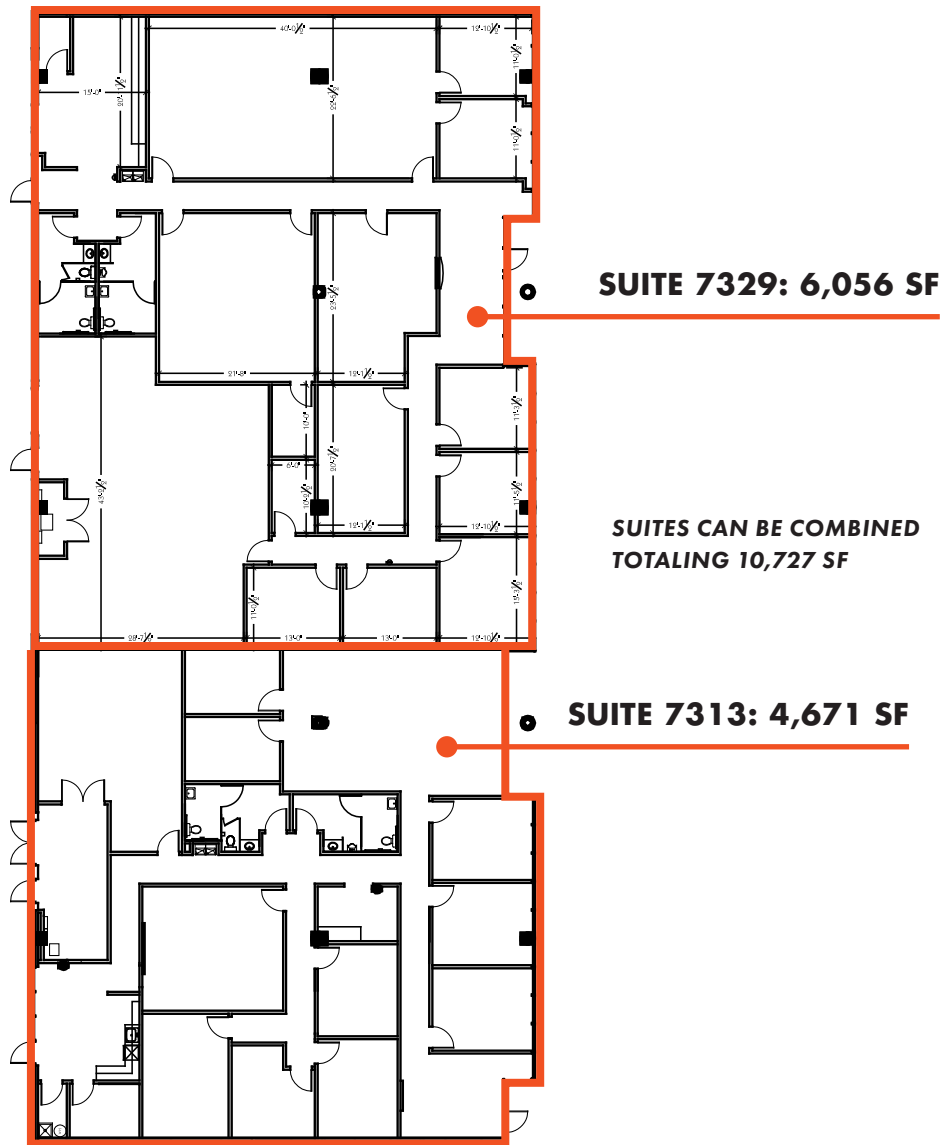
[foundrycommercial.com](http://foundrycommercial.com)

# SAND LAKE WEST | PHASE V

**SUITE 7313: 4,671 SF**

**SUITE 7329: 6,056 SF**

**SUITES CAN BE COMBINED TOTALING 10,727 SF**



**FOR MORE INFORMATION, PLEASE CONTACT:**

ALEX ROSARIO | 407.540.7713  
Partner  
Alex.Rosario@foundrycommercial.com  
Licensed Real Estate Broker

KEVIN WILL | 407.458.5888  
Vice President  
Kevin.Will@foundrycommercial.com  
Licensed Real Estate Broker

**FOUNDRY**  
COMMERCIAL

Although the information contained herein was provided by sources believed to be reliable, Foundry Commercial makes no representation, expressed or implied, as to its accuracy and said information is subject to errors, omissions or changes.

[foundrycommercial.com](http://foundrycommercial.com)