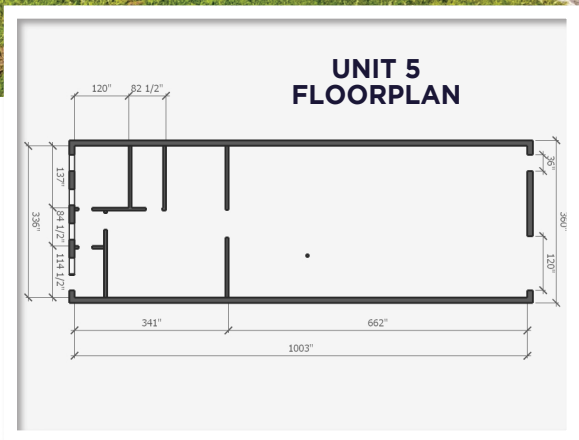


Unit 5 - 2295 Stevenage Drive, Ottawa



Available Space: 2522 sq ft
Zoning: IH - Industrial Heavy
Net Rent: \$16 psf + escalations
Additional Rent: \$7.60 psf
Availability: October 1
Unit is Currently Tenanted - Please Do Not Disturb Existing Tenants
Shipping: 1 Grade Level Door
Clear Height: 18 Ft
Power: 600v, 100 amp
 (to be verified by tenant)

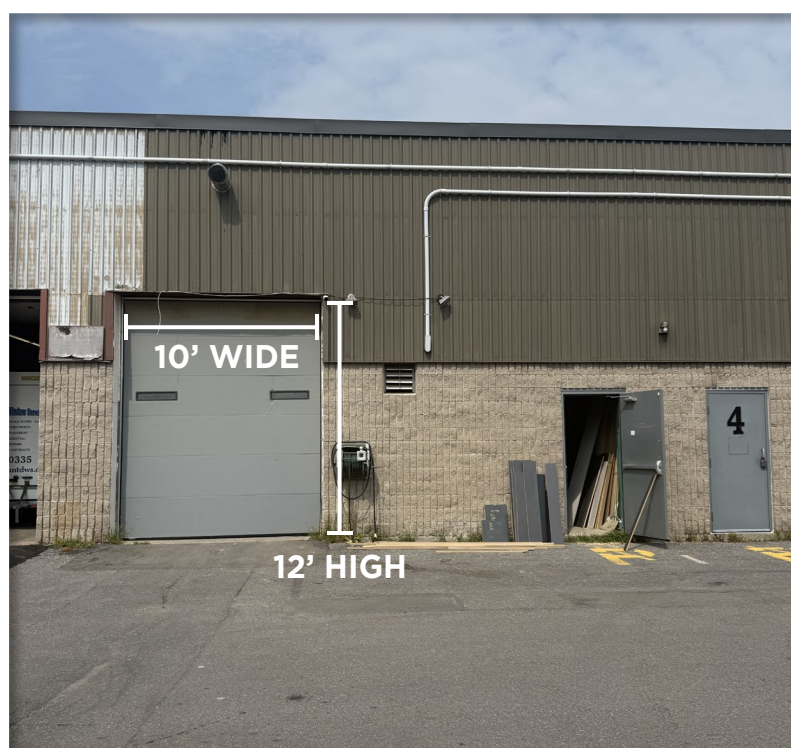
- Give your business space to grow in this centrally located industrial unit in the Hawthorne Industrial Park.
- The property is a multi-tenant industrial and commercial building.
- Easy access to the 417 and Hunt Club Road
- Large Garage Door is 10ft wide by 12ft high.
- The Landlord is not accepting automotive uses at this time.

Chris Hendricks • Broker
Cell (613) 614-3376
Office (613) 829-1818
Chris.Hendricks@kw.com
www.chrishendricks.ca



2148 Carling Ave., Units 5 & 6
Ottawa, Ontario K2A1H1
(613) 829-1818

Unit 5 - 2295 Stevenage Drive, Ottawa



LISTING AGENT

Chris Hendricks • Broker

Cell (613) 614-3376

Office (613) 829-1818

Chris.Hendricks@kw.com

www.chrishendricks.ca



INTEGRITY REALTY
BROKERAGE
INDEPENDENTLY OWNED AND OPERATED



2148 Carling Ave., Units 5 & 6
Ottawa, Ontario K2A1H1
(613) 829-1818