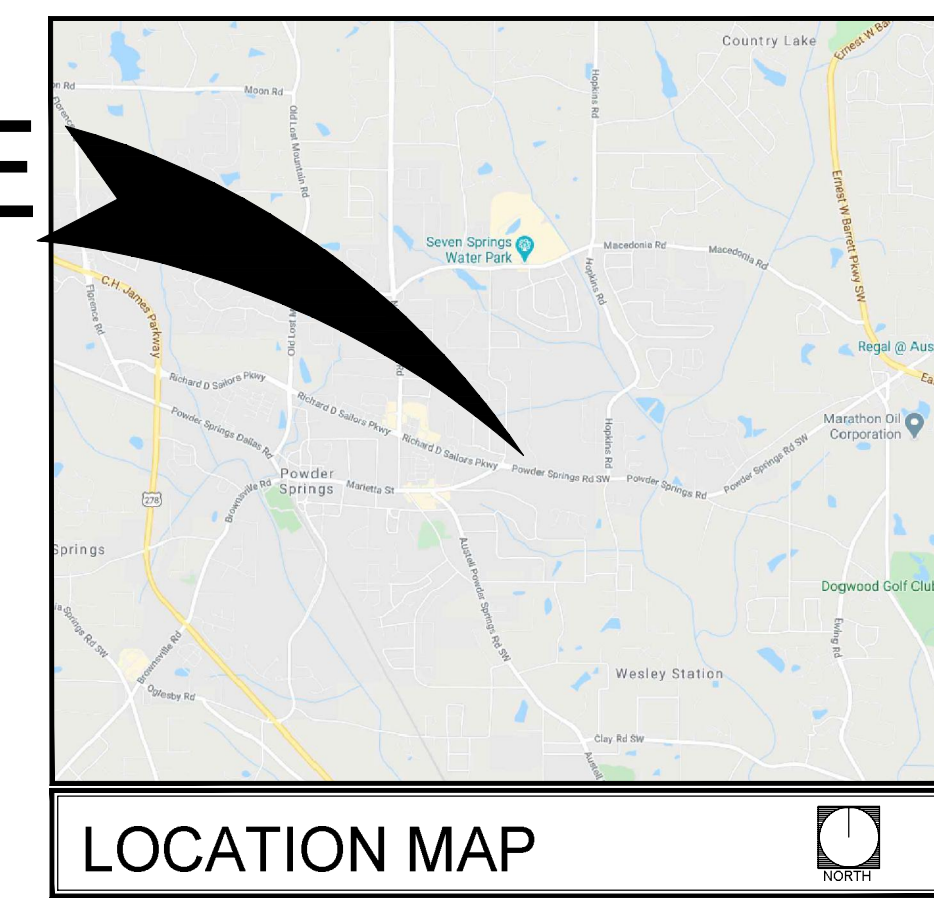
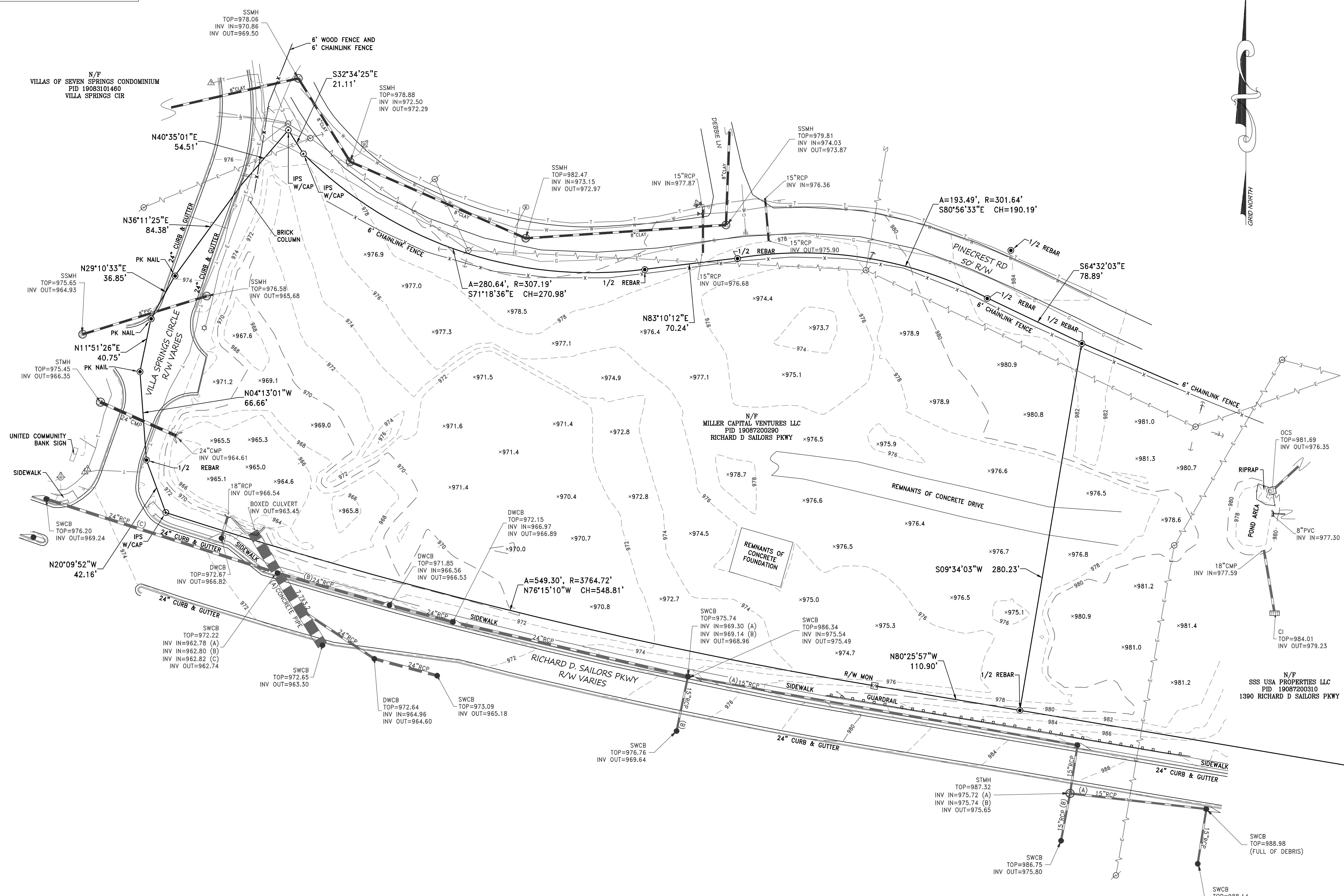


THIS PLAT IS A RETRACEMENT OF AN EXISTING PARCEL OR PARCELS OF LAND AND DOES NOT SUBDIVIDE OR CREATE A NEW PARCEL OR MAKE ANY CHANGES TO ANY REAL PROPERTY BOUNDARIES. THE RECORDING INFORMATION OF THE DOCUMENTS, MAPS, PLATS, OR OTHER INSTRUMENTS WHICH CREATED THE PARCEL OR PARCELS ARE STATED HEREON. RECORDATION OF THIS PLAT DOES NOT IMPLY APPROVAL OF ANY LOCAL JURISDICTION, AVAILABILITY OF PERMITS, COMPLIANCE WITH LOCAL REGULATIONS OR REQUIREMENTS, OR SUITABILITY FOR ANY USE OR PURPOSE OF THE LAND. FURTHERMORE, THE UNDERSIGNED LAND SURVEYOR CERTIFIES THAT THIS PLAT COMPLES WITH THE MINIMUM TECHNICAL STANDARDS FOR PROPERTY SURVEYS IN GEORGIA AS SET FORTH IN THE RULES AND REGULATIONS OF THE GEORGIA BOARD OF REGISTRATION FOR PROFESSIONAL ENGINEERS AND LAND SURVEYORS AND AS SET FORTH IN O.C.G.A. SECTION 15-6-67.

SITE



**COLUMBIA ENGINEERING**  
 2862 BUFORD HIGHWAY  
 SUITE 200  
 DULUTH, GEORGIA 30096  
 (770) 925-0357

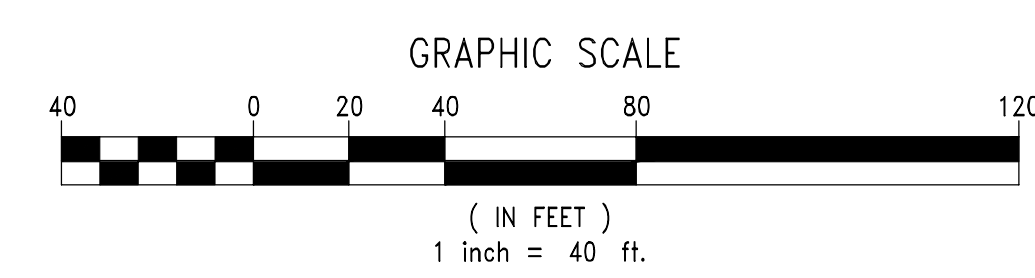


**LEGEND**

●	IRON PIN FOUND
○	IRON PIN SET
—	RIGHT OF WAY MONUMENT
—	SINGLE WING CATCH BASIN
—	DOUBLE WING CATCH BASIN
—	STORM MANHOLE
—	DROP INLET
—	SANITARY SEWER MANHOLE
—	MAILBOX
—	POWER POLE
—	AC UNIT
—	GUY ANCHOR
—	SIGN
—	FIRE HYDRANT
—	WATER VALVE
—	WATER METER
—	TELEPHONE POLE
—	HARDWOOD TREE
—	PINE TREE
—	OVERHEAD UTILITY LINE
—	WOODS LINE
—	FENCE
—	SANITARY SEWER LINE
—	GAS LINE
—	WATER LINE
—	STORM LINE
—	R/W RIGHT OF WAY
—	N/F NOW OR FORMERLY
—	DB DEED BOOK
—	PG PAGE
—	RCP REINFORCED CONCRETE PIPE
—	CMP CORRUGATED METAL PIPE
—	PVC POLYVINYL PLASTIC PIPE
—	LL LAND LOT

**GENERAL NOTES**

- BY GRAPHIC PLOTTING ONLY, THE PROPERTY SHOWN HEREON IS IN ZONE X OF THE FLOOD INSURANCE RATE MAP, COMMUNITY PANEL NO. 130570181H, WHICH BEARS AN EFFECTIVE DATE OF MARCH 04, 2013 AND IT IS NOT IN A SPECIAL FLOOD HAZARD AREA SUBJECT TO INUNDATION BY THE 1% ANNUAL CHANCE FLOOD. NO ADDITIONAL FIELD WORK HAS BEEN PERFORMED TO MAKE OR VERIFY THIS DETERMINATION.
  - THE BASIS OF BEARINGS FOR THIS SURVEY IS THE GEORGIA STATE PLANE COORDINATE SYSTEM, WEST ZONE.
  - EQUIPMENT USED FOR MEASUREMENTS IS AS FOLLOWS: TRIMBLE R6 GPS UNIT, TRIMBLE S6 ROBOTIC TOTAL STATION AND A TSC3 RANGER DATA COLLECTOR.
  - THE HORIZONTAL DATUM FOR THIS SURVEY IS NAD83 AND THE VERTICAL DATUM IS NAVD83.
  - THE FIELD DATA COLLECTED TO SUPPORT THIS PLAT WAS COMPLETED ON 12/11/2019.
  - THE INITIAL CONTROL POINTS FOR THIS SURVEY WERE LOCATED UTILIZING GPS. THE EQUIPMENT USED WAS A TRIMBLE R6 DUAL FREQUENCY RECEIVER WITH A TRIMBLE TSC3 DATA COLLECTOR NETWORK CORRECTIONS WERE RECEIVED VIA A CELLULAR MODEM. THE TYPE OF SURVEY NETWORK RTK UTILIZING THE TRIMBLE VRS REALTIME NETWORK OPERATED BY 4GPS SOLUTIONS, INC.
  - THE CERTIFICATE OF AUTHORIZATION NUMBER FOR COLUMBIA ENGINEERING IS LSF000902.
  - THE FIELD DATA UPON WHICH THIS PLAT IS BASED HAS A CLOSURE PRECISION OF ONE FOOT IN IN 47,600 FEET AND AN ANGULAR ERROR OF 0.5 SECONDS PER ANGLE POINT, AND WAS ADJUSTED USING LEAST SQUARES. THE EQUIPMENT USED TO OBTAIN THE LINEAR AND ANGULAR MEASUREMENTS HERE IN WAS A TRIMBLE S6 TOTAL STATION.
  - THIS PLAT HAS BEEN CALCULATED FOR CLOSURE AND IS FOUND TO BE ACCURATE WITHIN ONE FOOT INV IN 256,611 FEET.
  - THE UNDERGROUND UTILITIES (EXCEPT THE LOCATION OF EXISTING DRAINAGE, SEWER AND IRRIGATION UTILITIES AS WELL AS UNDERGROUND STORAGE TANKS) WERE LOCATED BY THE PUBLIC UTILITY COMPANIES SERVING THIS AREA AND ARE SHOWN HEREON AS THEY WERE PAINTED AND/OR MARKED ACCORDINGLY.
- THE SURVEYOR MAKES NO GUARANTEES THAT THE UNDERGROUND UTILITIES SHOWN COMPRISE ALL SUCH UTILITIES IN THE AREA, EITHER IN-SERVICE OR ABANDONED. UNDERGROUND UTILITIES NOT OBSERVED OR LOCATED UTILIZING THIS TECHNIQUE MAY EXIST ON THIS SITE BUT NOT BE SHOWN, AND MAY BE FOUND UPON EXCAVATION.
- THE SURVEYOR FURTHER DOES NOT WARRANT THAT THE UNDERGROUND UTILITIES SHOWN ARE IN THE EXACT LOCATION INDICATED ALTHOUGH THE SURVEYOR DOES CERTIFY THAT THEY ARE LOCATED AS ACCURATELY AS POSSIBLE FROM INFORMATION AVAILABLE.
- INFORMATION REGARDING MATERIAL AND SIZE OF UTILITIES IS BASED ON RECORDS ACQUIRED FROM THE UTILITY OWNERS.



BOUNDARY / TOPOGRAPHIC SURVEY FOR:  
**MILLER CAPITAL VENTURES, LLC**  
 LAND LOT 872 OF 19TH DISTRICT, 2ND SECTION  
 CITY OF POWDER SPRINGS  
 RICHARD D SAILORS PARKWAY  
 COBB COUNTY, GEORGIA

REVISIONS	DATE

DRAWING TITLE

**BOUNDARY / TOPOGRAPHIC SURVEY**

FILE NAME: 5340.00_SV	
DRAWN BY: SB	DRAWING NO.:
PROJECT NO. 5340.00	
FIELD DATE: 12/11/19	1 OF 1
PLAT DATE: 01/28/20	
SCALE: 1"=40'	

© 2018, COLUMBIA ENGINEERING SERVICES

**COLUMBIA ENGINEERING**

CIVIL ENGINEERS \* LAND PLANNERS  
 \* LANDSCAPE ARCHITECTS \* SURVEYORS