

For Lease: Mid-Pinellas Office  
**PINELLAS PROFESSIONAL CENTER**

7800 66th Street N., Pinellas Park, FL 33781



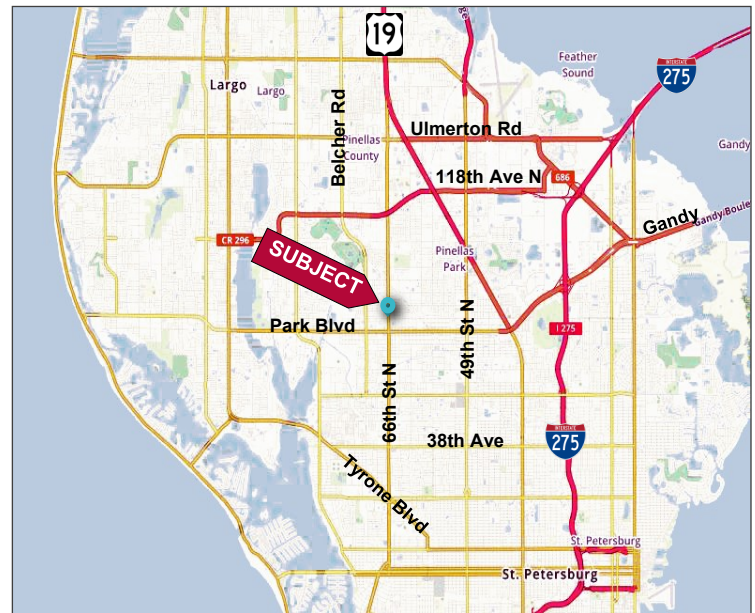
**1,215 SF - 3,310 SF Suites available**



**FEATURES**

- ❖ Medical / Office Suites available - 1,215 RSF and 3,310 RSF
- ❖ Building Owner has recently made a big investment; parking lot resurfacing, including curb repairs and replacement of bumper stops
- ❖ Exceptional mid-Pinellas County location just north of Park Blvd.
- ❖ Recently renovated all common areas with new updated Elevator, ADA restrooms and LED lighting in all hallways, making this medical office building "Top-Class" in mid-Pinellas County
- ❖ Current Tenants include Tampa Bay Imaging, DaVita Medical, Interventional Pain Specialists, and AARP
- ❖ Plenty of parking with a parking ratio of 4.3/1,000
- ❖ "Hands On" Landlord providing tenants with quick response and attention to details
- ❖ \$22.00 / SF (Modified Gross)

**LOCATION MAP**



2024 Demographics	1-mile	3-mile	5-mile
Total Population	13,450	108,523	272,611
Total Households	5,283	47,626	122,931
Average HH Income	\$123,183	\$110,054	\$110,958

Elliott M. Ross, CCIM  
 O: 813.755.6700  
 C: 727.639.3800  
 elliot@rossrealtytampabay.com

Chris Shryock  
 O: 813.755.6700  
 C: 727.412.5166  
 chris@rossrealtytampabay.com

ROSS REALTY GROUP, INC.  
 Henderson Centre  
 3902 Henderson Blvd., Suite 203  
 Tampa, FL 33629



Suite 303 – Reception

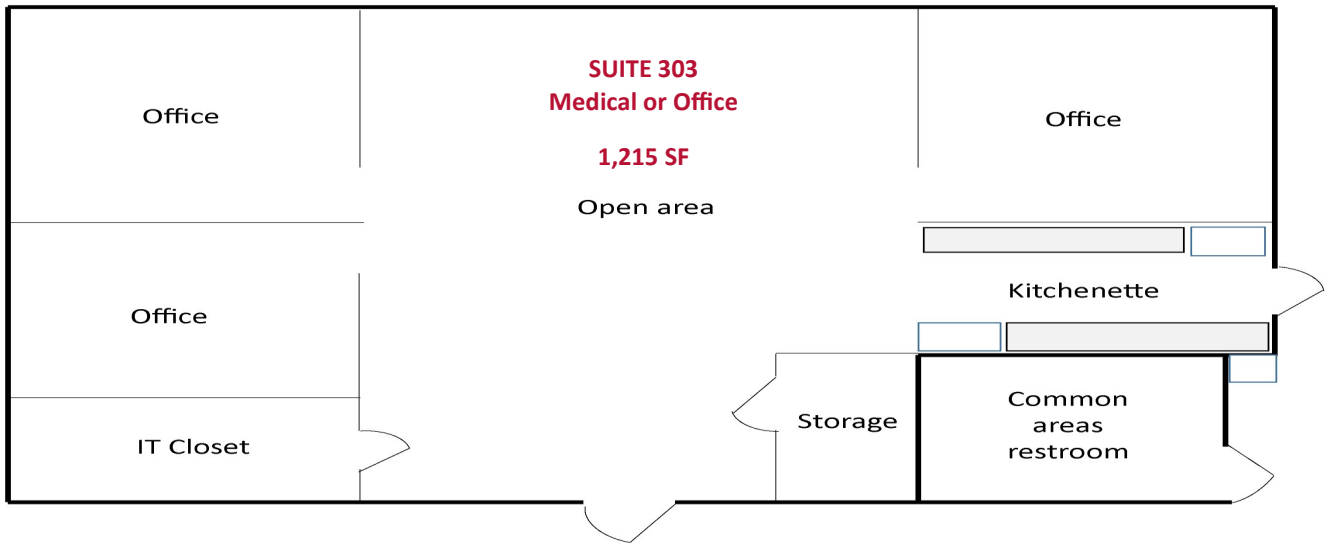


Suite 303 – Open area



LOCAL DRIVE TIMES & DISTANCES		
US Hwy 19	2.8 miles	8 minutes
Interstate 275	5.6 miles	16 minutes
St Pete/Clearwater International Airport	6.7 miles	14 minutes
TIA/Westshore	18.4 miles	25 minutes
Downtown Tampa	21 miles	27 minutes

**Suite 303 - 1,215 SF Medical or Office**



Any information given herein is obtained from sources considered reliable. However, we are not responsible for misstatement of facts, errors, omissions, prior sale, withdrawal from market, modification of mortgage commitment, terms and considerations, or change in price without notice. The information supplied herein is for informational purposes only and shall not contain a warranty or assurance that said information is correct. Any person intending to rely upon the information supplied herein should verify said information independently.