

**FOR LEASE**

## RETAIL SPACE

2600 S. MERIDIAN AVE., OKLAHOMA CITY 73108



Presented By:

**George W. Huffman**

CEO | Managing Broker

M: 405.409.4400

O: 405.752.2525

[george@iwpok.com](mailto:george@iwpok.com)

**INTERWEST  
REALTY**

7501 Broadway Extension  
Oklahoma City, OK 73116

InterWest Realty is a registered trade name of InterWest Properties, Inc.

Disclaimer: The above information is from reliable sources, but not guaranteed and is being offered subject to errors, omissions, previous sale, change in price and withdrawal without notice.



## EXECUTIVE SUMMARY



### OFFERING SUMMARY

Available SF: 3,500

Base Rate: \$22.50 / SF

OPEX Base: \$2.50/ SF

Lease Type: NNN

Typical Term: 3-5 Years

Co-Brokerage: 3% Primary Term

### PROPERTY OVERVIEW

Prime Retail Space Fronting Meridian

This high visibility Strip Center has one suite available with 1,750 sf, ideal for Boutique, Flower Shop, Restaurant, Salon (easily convert prior massage space), or many other unique uses of your choosing. Ample popular restaurants and hotels within the one mile radius, lots of free parking, Brewsky's Bar and Restaurant on site, and conveniently located just a few miles north of Will Rogers Airport, Highway 152, I-44 and I-40. Between 15<sup>th</sup> and 29<sup>th</sup> On the East side of Meridian.

Contact us on the fly for an easy showing!

Call: George Huffman @ 405-409-4400 | [george@iwpok.com](mailto:george@iwpok.com)

Presented By:

**George W. Huffman**

CEO | Managing Broker

M: 405.409.4400

O: 405.752.2525

[george@iwpok.com](mailto:george@iwpok.com)

**FOR LEASE**

## AVAILABLE SPACE



SPACES	LEASE RATE	SPACE SIZE
Suite G	\$22.50 SF/yr (NNN)	1,750 SF
Suite H	\$22.50 SF/yr (NNN)	1,750 SF

Presented By:

**George W. Huffman**

CEO | Managing Broker

M: 405.409.4400

O: 405.752.2525

george@iwpok.com

**FOR LEASE**



## ADDITIONAL PHOTOS



Presented By:

**George W. Huffman**

CEO | Managing Broker

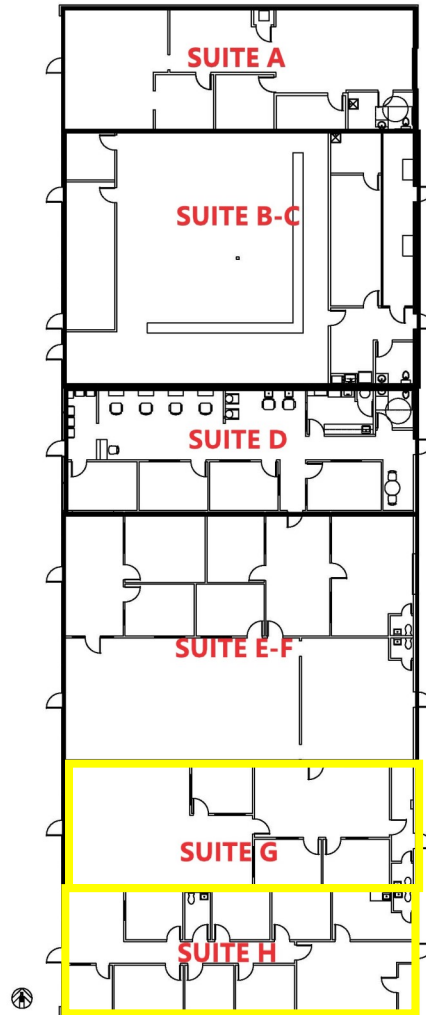
M: 405.409.4400

O: 405.752.2525

[george@iwpok.com](mailto:george@iwpok.com)

**FOR LEASE**

## SITE PLAN



Presented By:

**George W. Huffman**

CEO | Managing Broker

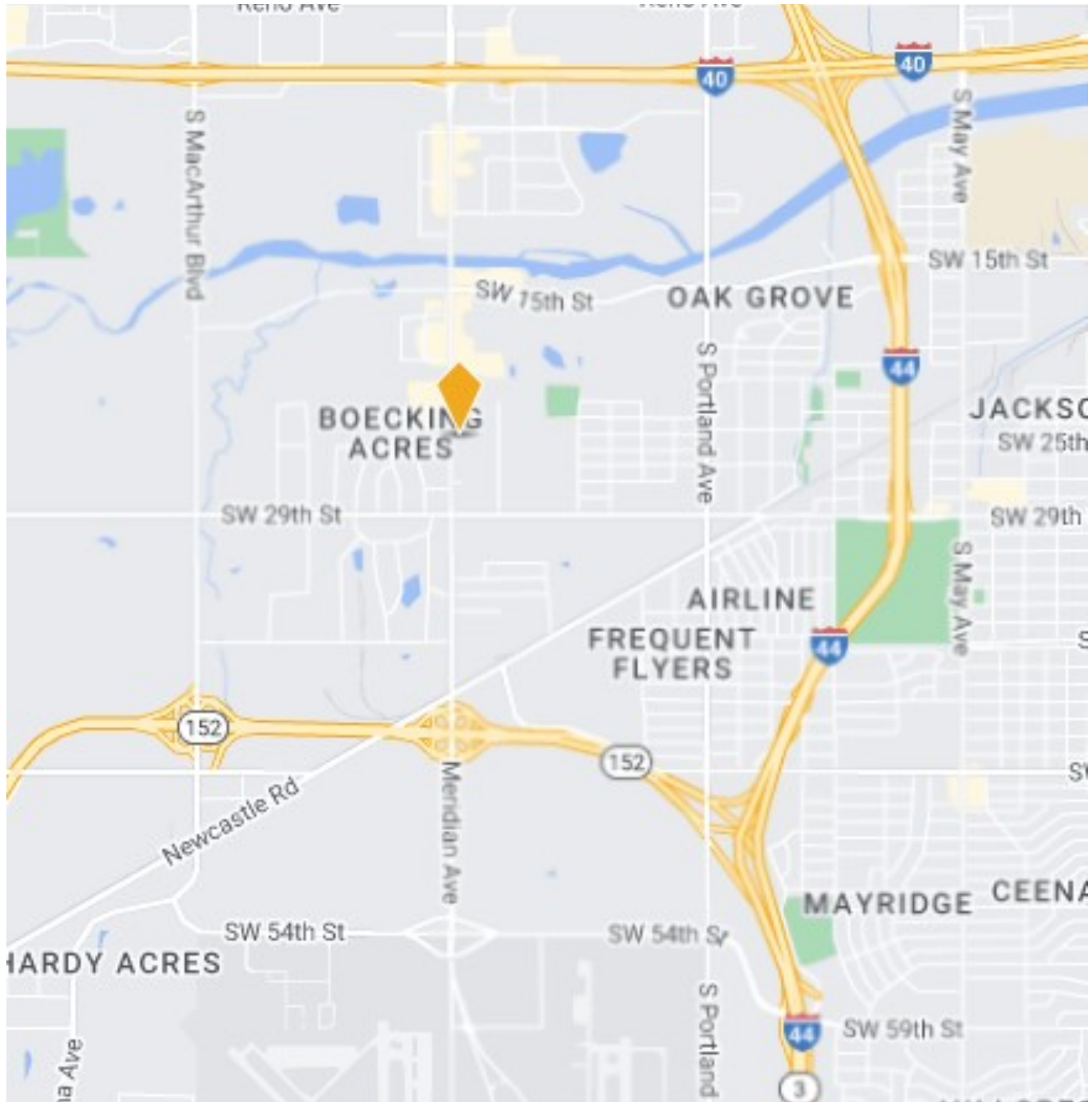
M: 405.409.4400

O: 405.752.2525

george@iwpok.com

**FOR LEASE**

## LOCATION MAP



Presented By:

**George W. Huffman**

CEO | Managing Broker

M: 405.409.4400

O: 405.752.2525

george@iwpok.com

**FOR LEASE**