



## PLYMOUTH CITY CENTER MEDICAL BUILDING

15655 37th Avenue N. ♦ Plymouth, MN 56038



- ♦ Prime second floor suites immediately available for lease
- ♦ Central/Downtown Plymouth Location
- ♦ Ideally located with easy access to I-494, Hwy. 55 and Rockford Road
- ♦ High traffic area, excellent visibility
- ♦ Many retail and restaurant options nearby
- ♦ Close proximity to WestHealth, Park Nicollet Clinic, Allina Medical Clinic, Plymouth Ice Center, Lifetime Fitness, Plymouth City Hall, Wayzata High School
- ♦ Join Voyage Healthcare, Voyage Woman's Health, Institute For Athletic Medicine, MN Oral Surgery, West Metro Ophthalmology

### FOR LEASE

JASON A. BUTTERFIELD

(952) 460-9830

[jason.butterfield@frauenshuh.com](mailto:jason.butterfield@frauenshuh.com)



FRAUENSHUH  
COMMERCIAL REAL ESTATE





# PLYMOUTH CITY CENTER MEDICAL BUILDING

15655 37th Avenue N. + Plymouth, MN 56308

## ◆ BUILDING DETAILS

- Building Size/Stories: 45,853 sq. ft./2 Stories
- Year Built: 2014
- Net Rental Rate: \$24.50
- 2024 Estimated Ops/Tax: \$20.01
- Monument Signage
- Available Space:
 

Suite 210	5,180 RSF
Suite 280	2,060 RSF

## ◆ AMENITIES

- Ideally located with easy access to I-494, Hwy. 55 and Rockford Road
- Ample Accessible Parking
- Many Retail and Restaurant options nearby
- Close proximity to WestHealth, Park Nicollet Clinic, Allina Medical Clinic, Lifetime Fitness, Plymouth City Hall, Plymouth Ice Center, Wayzata High School
- Anchor Tenants: Voyage Health, Voyage Health - Center for Women's Health Institute for Athletic Medicine North Memorial

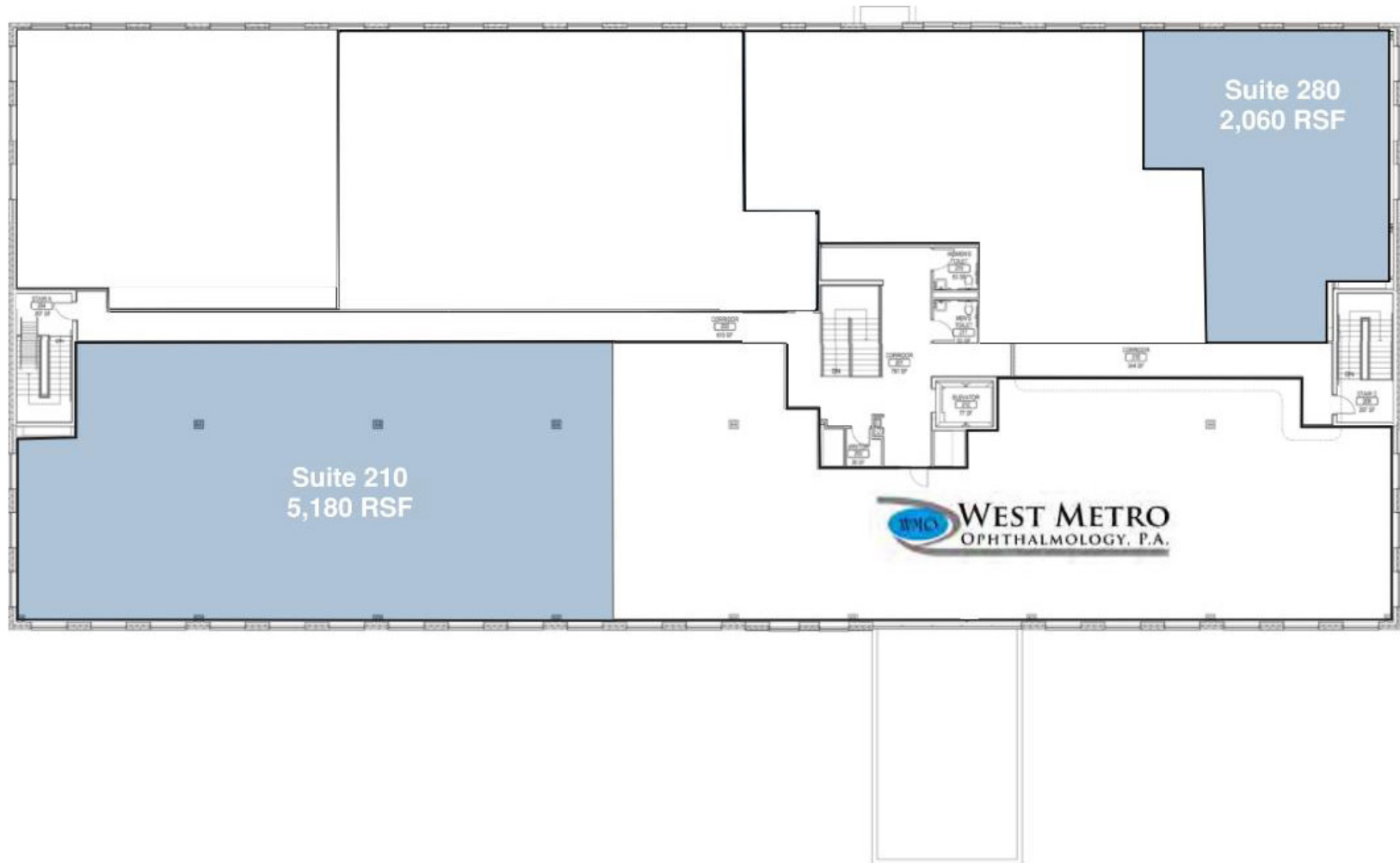
F R A U E N S H U H

COMMERCIAL REAL ESTATE

www.frauenshuh.com + 7101 W. 78th Street + Minneapolis, MN

PLYMOUTH CITY CENTER MEDICAL BUILDING ♦ FOR LEASE ♦ SECOND FLOOR

15655 37th Avenue N. ♦ Plymouth, MN



JASON A. BUTTERFIELD

(952) 460-9830

jason.butterfield@frauenshuh.com



FRAUENSHUH

COMMERCIAL REAL ESTATE