

8797

**SNOUFFER  
SCHOOL ROAD**

GAITHERSBURG, MD  
**BUILDING 3**

**Goodman**  
GOODMAN DISTRIBUTION, INC.

8797

**RESERVE  
BUSINESS PARK**

Available for Sublease Thru  
June 30, 2028



**CUSHMAN &  
WAKEFIELD**



# SUPERIOR CLASS A PROJECT LOCATED IN MONTGOMERY COUNTY

## // SITE OVERVIEW



**3 LOADING DOCKS**



**40'X48' COLUMN SPACING**



**9'W X 10'H STEEL DOORS WITH  
48" HEIGHT LOADING DOCKS**



**1 - 12'W X 14'H DRIVE-IN DOOR**



**RESERVED PARKING**

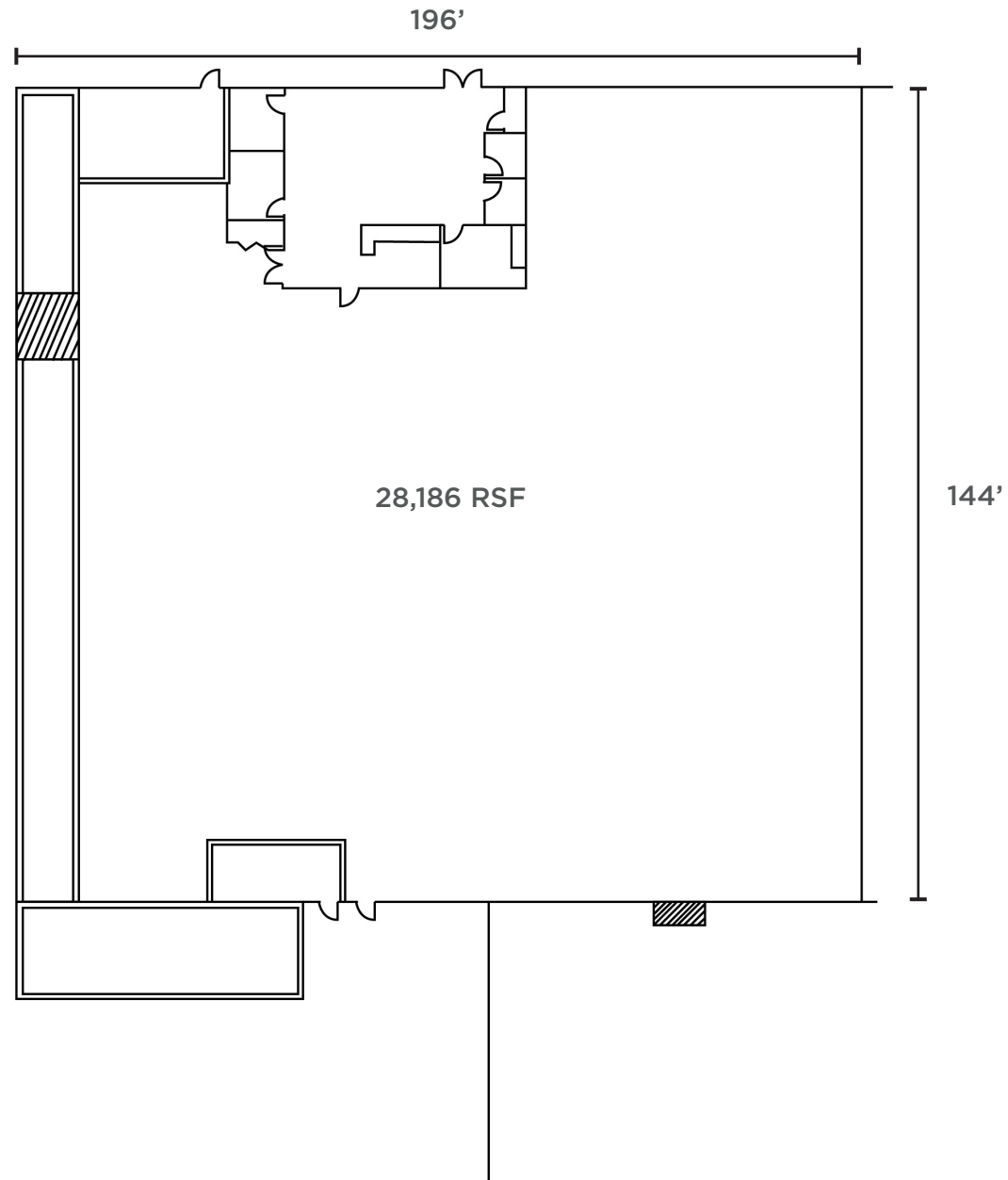


**BUILT OUT 1,775 SF OF OFFICE**

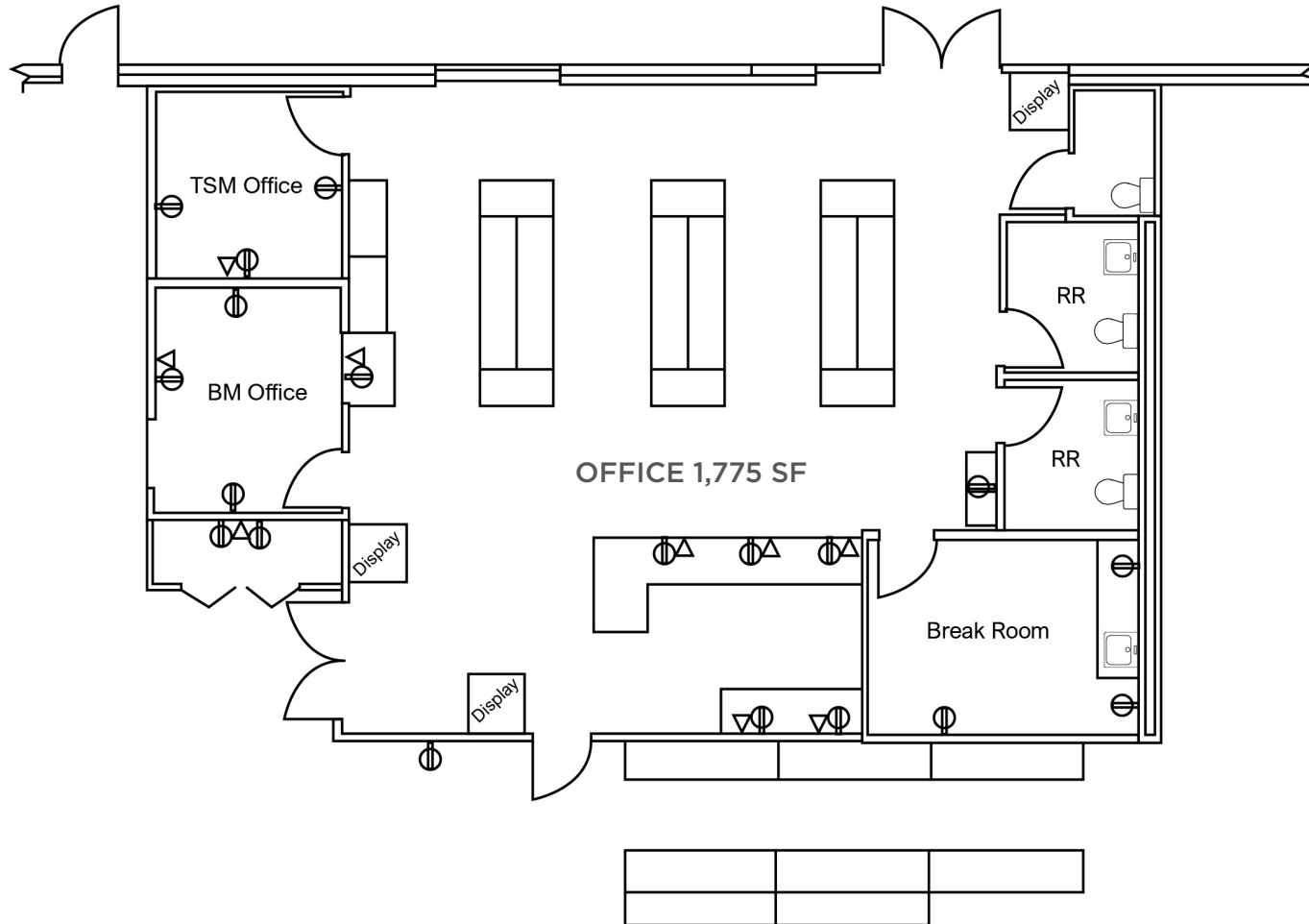


**8797 SNOUFFER SCHOOL ROAD**  
Gaithersburg, MD 20879

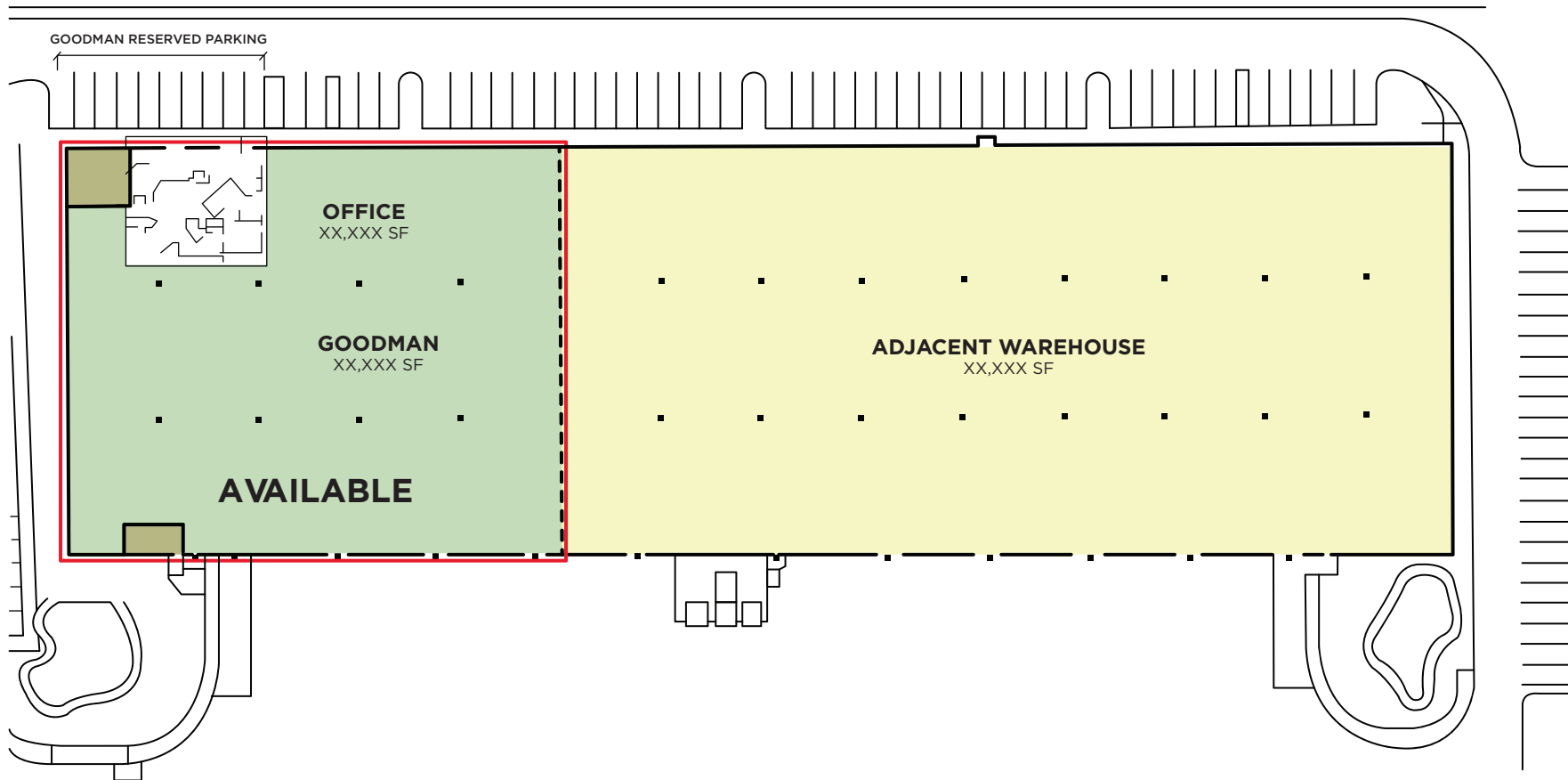
# // FLOOR PLANS



# // FLOOR PLANS

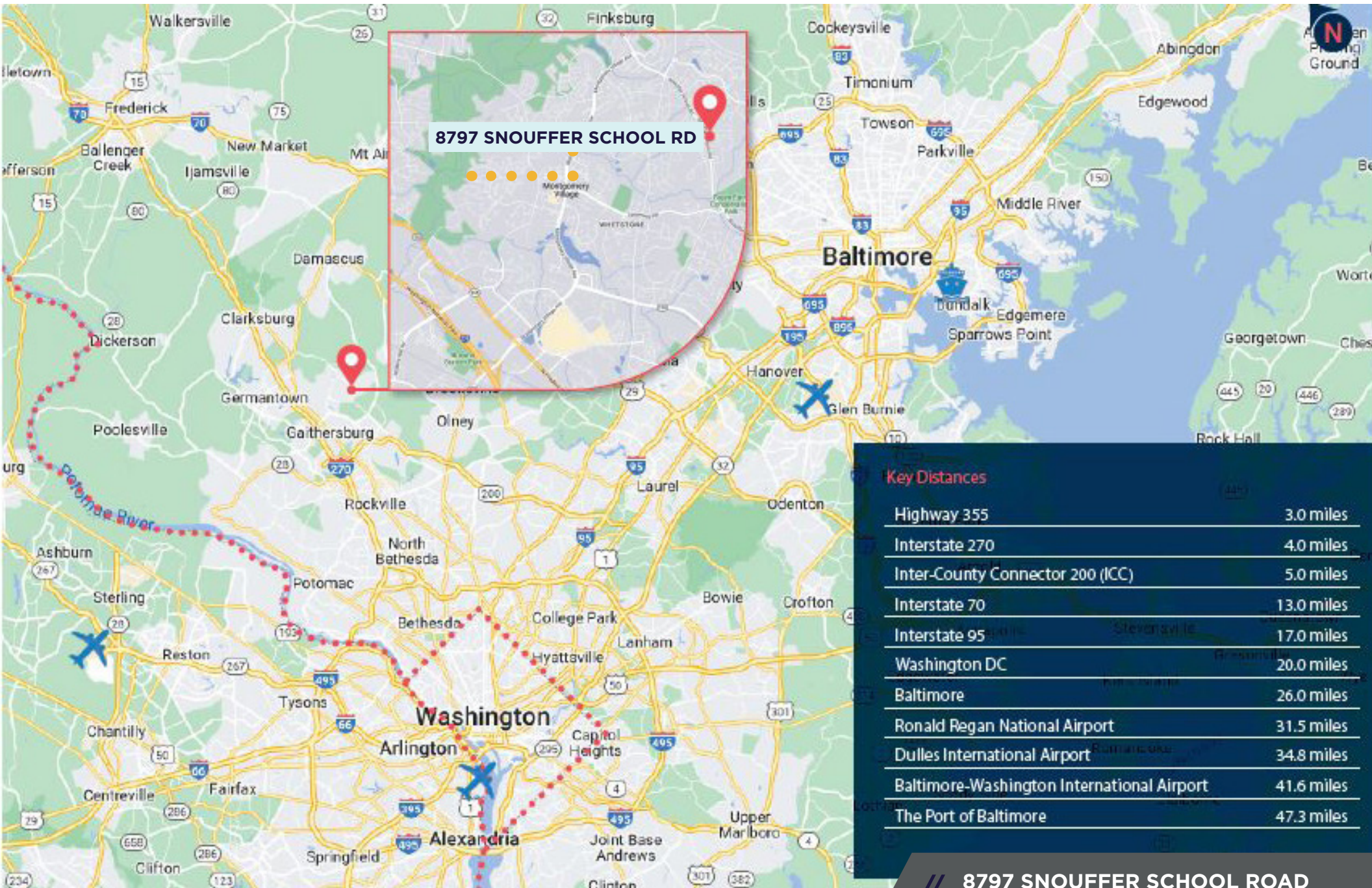


# // FLOOR PLANS





# // LOCATION MAP





# 8797

## SNOUFFER SCHOOL ROAD

GAITHERSBURG, MD  
BUILDING 3



### CONTACT INFORMATION

PETER ROSAN  
Executive Managing Director  
+1 301 634 8487  
[peter.rosan@cushwake.com](mailto:peter.rosan@cushwake.com)

KATIE GORMLEY  
Director  
+1 202 306 0943  
[katie.gormley@cushwake.com](mailto:katie.gormley@cushwake.com)

©2024 Cushman & Wakefield. All rights reserved. The information contained in this communication is strictly confidential. This information has been obtained from sources believed to be reliable but has not been verified. NO WARRANTY OR REPRESENTATION, EXPRESS OR IMPLIED, IS MADE AS TO THE CONDITION OF THE PROPERTY (OR PROPERTIES) REFERENCED HEREIN OR AS TO THE ACCURACY OR COMPLETENESS OF THE INFORMATION CONTAINED HEREIN, AND SAME IS SUBMITTED SUBJECT TO ERRORS, OMISSIONS, CHANGE OF PRICE, RENTAL OR OTHER CONDITIONS, WITHDRAWAL WITHOUT NOTICE, AND TO ANY SPECIAL LISTING CONDITIONS IMPOSED BY THE PROPERTY OWNER(S). ANY PROJECTIONS, OPINIONS OR ESTIMATES ARE SUBJECT TO UNCERTAINTY AND DO NOT SIGNIFY CURRENT OR FUTURE PROPERTY PERFORMANCE.