

1202 East Maple Road

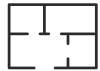
Troy, MI

- 20,688 Sq. Ft. For Lease
- Exceptionally Clean
- 2 Truck Wells
- Main Road Frontage
- Excellent Office Layout
- Hi-Density Fire Suppression System
- 60' Wide Bays

INDUSTRIAL BUILDING FOR LEASE



16,788 SF of Factory



3,900 SF of Office

FOR MORE INFORMATION:

Garry Rogers
Senior Vice President
248.637.3527
grogers@LMCap.com

Jason Capitani, SIOR, CCIM
Managing Partner
248.637.7684
jcapitani@LMCap.com



L. MASON CAPITANI

CORFAC INTERNATIONAL

CELEBRATING 60 YEARS

248.637.9700 | LMCap.com



1202 East Maple Road

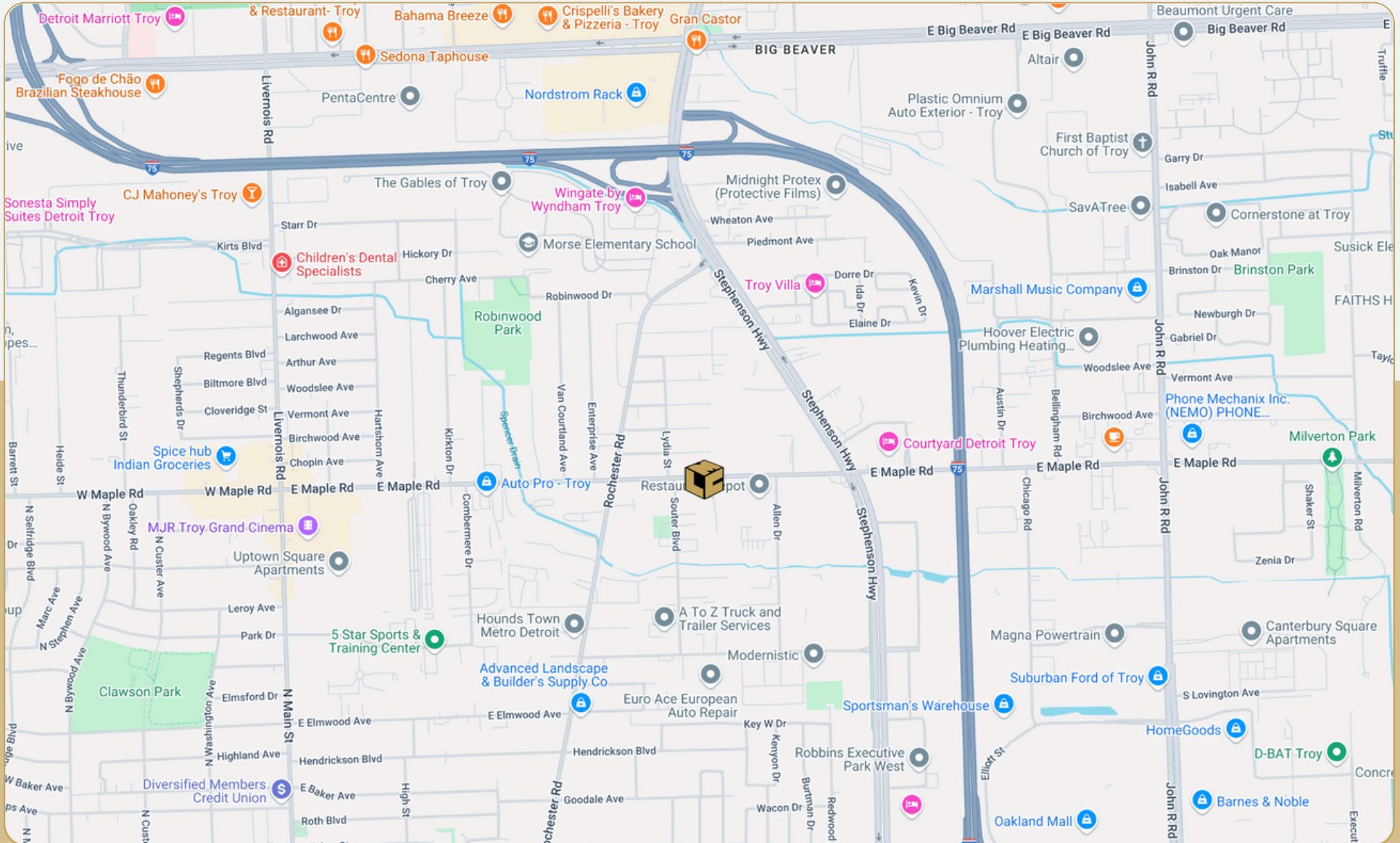
Troy, MI



L. MASON CAPITANI

CORFAC INTERNATIONAL

CELEBRATING 60 YEARS



248.637.9700 | LMCap.com

1202 East Maple Road

Troy, MI



1202 East Maple Road

Troy, MI



1202 East Maple Road

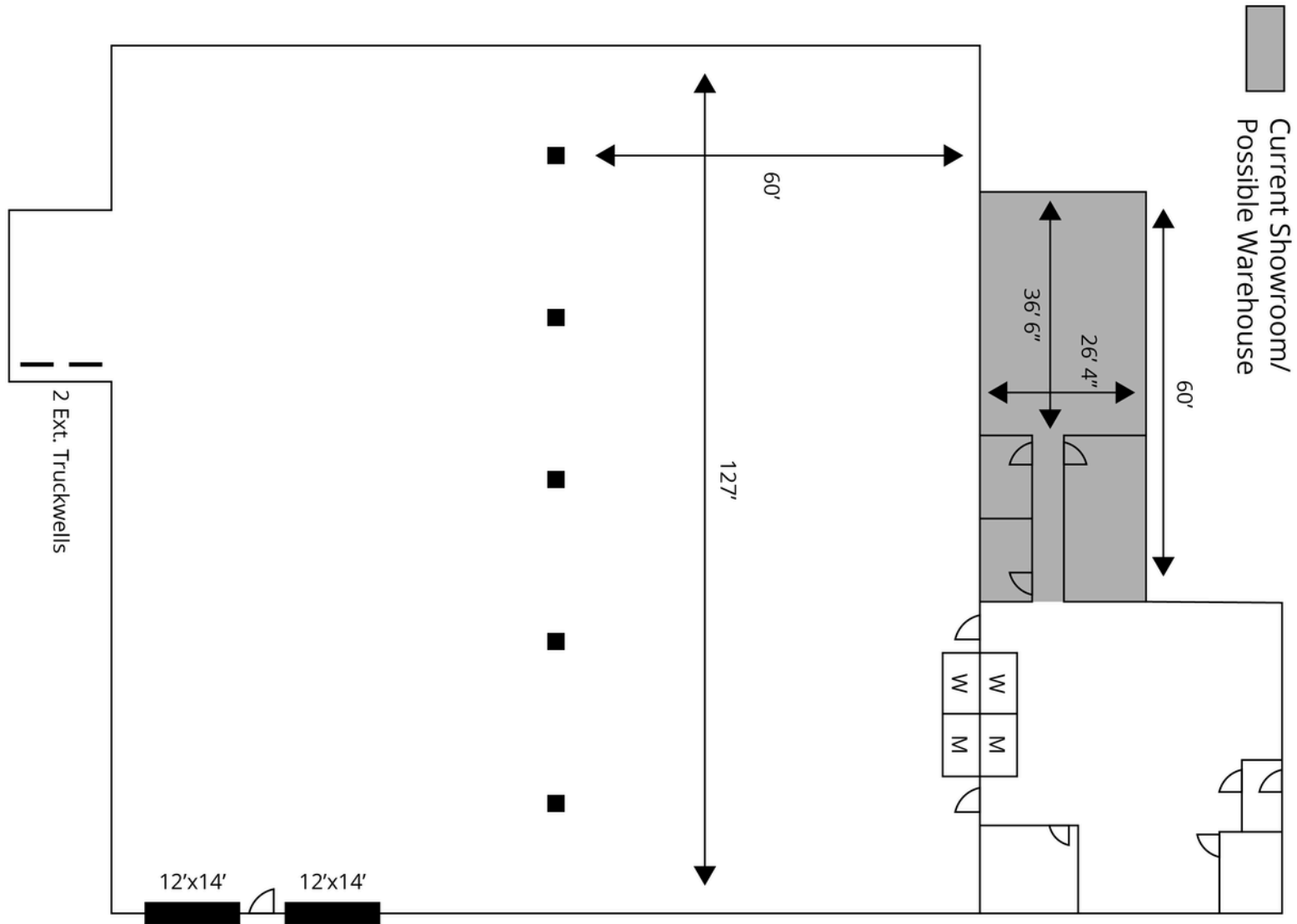
Troy, MI



L. MASON CAPITANI

CORFAC INTERNATIONAL

CELEBRATING 60 YEARS



1202 East Maple Road

Troy, MI



L. MASON CAPITANI

CORFAC INTERNATIONAL

CELEBRATING 60 YEARS

Industrial Property Details:

Details:

Intersection:	Rochester Rd/Maple Rd
Tenancy:	Single
Year Built:	1984
Rail Siding:	No
Frontage::	150'
Parking:	30 Spaces
Expandable:	-
Storage:	-
Total SF:	20,688 SF
Available SF:	20,688 SF
Min/Max SF:	20,688 SF
Office SF:	3,900 SF
Factory SF:	16,788 SF
X-Way Distance:	Minutes to I-75
Zoning:	IB
Acres:	1.2

Interior:

Ceiling Height:	17.5'
Bay Size:	60'
Restrooms:	4
Crane(s):	-
Underhook:	-
Power:	240 Volt 400 Amps
Buss Duct:	No
Lighting:	LED
Truckwell(s):	2 ext.
Grade Door:	(2) 12'x14'
Heating:	Gas Forced Air
A/C:	Office Only
Sprinklered:	-
Airlines:	No
Compressor:	No
Floor Drains:	No

Economic:

Lease/SF:	\$8.95
Lease/Month:	\$15,429.80
Lease Terms:	NNN
Occupancy:	Immediate
Taxes:	\$2.40 SF/yr (2026 Estimate)
Status:	Existing