



770

Tamalpais Drive  
Town Center | Corte Madera

FOR IMMEDIATE SUBLEASE

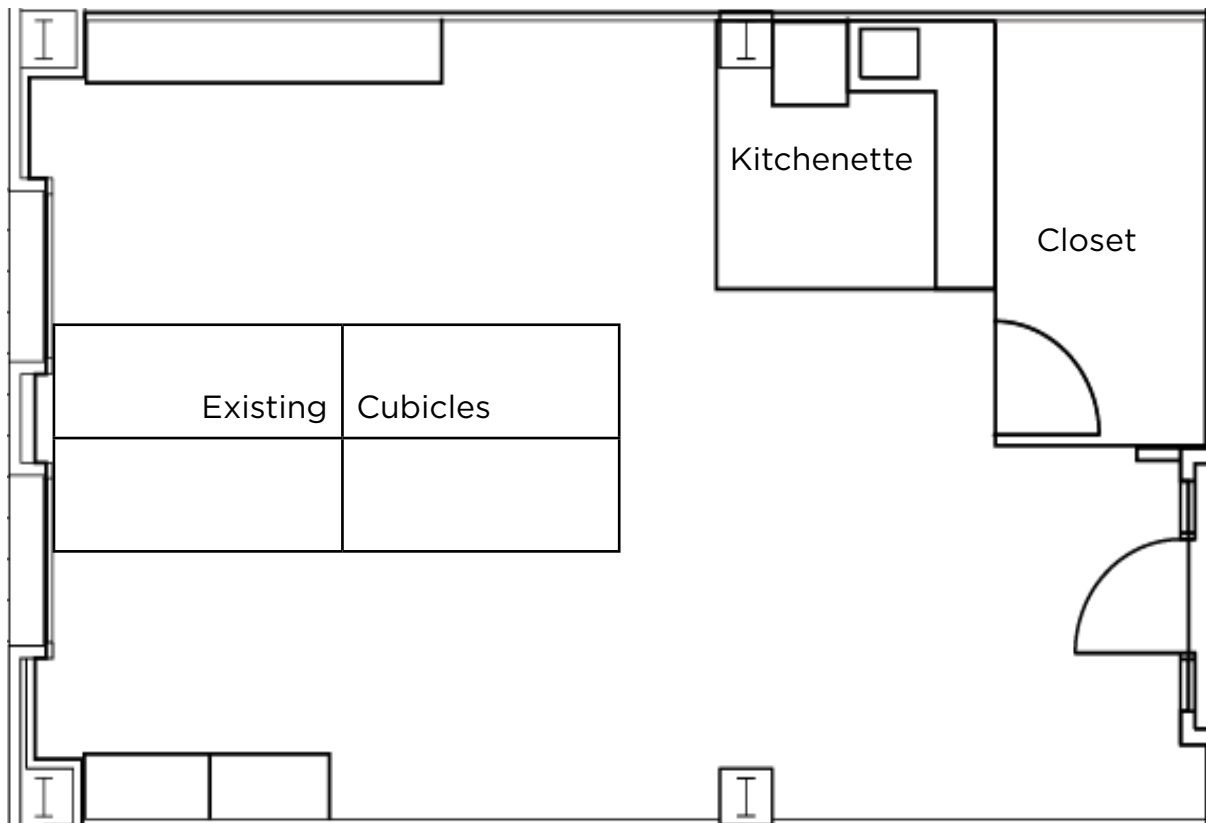
±801 SF Plug N' Play Office Suite



Jones Lang LaSalle Brokerage, Inc. Real Estate License # 01856260

## Project Highlights:

- ±801 SF Class “A” Office Suite
- Plug N’ Play with Existing Furniture
- Bright Open Space with Natural Light
- Abundant Parking (3 Per 1,000 SF Ratio)
- Operable Windows Allow Air-Flow
- Excellent Access to Highway 101
- Convenient, Central Location at the Town Center
- Direct Access to Shopping, Dining, & Fitness Amenities
- On-site Management and 24-Hour Security
- Available Immediately, Asking Rate: \$5.25 psf/mo (FSG)

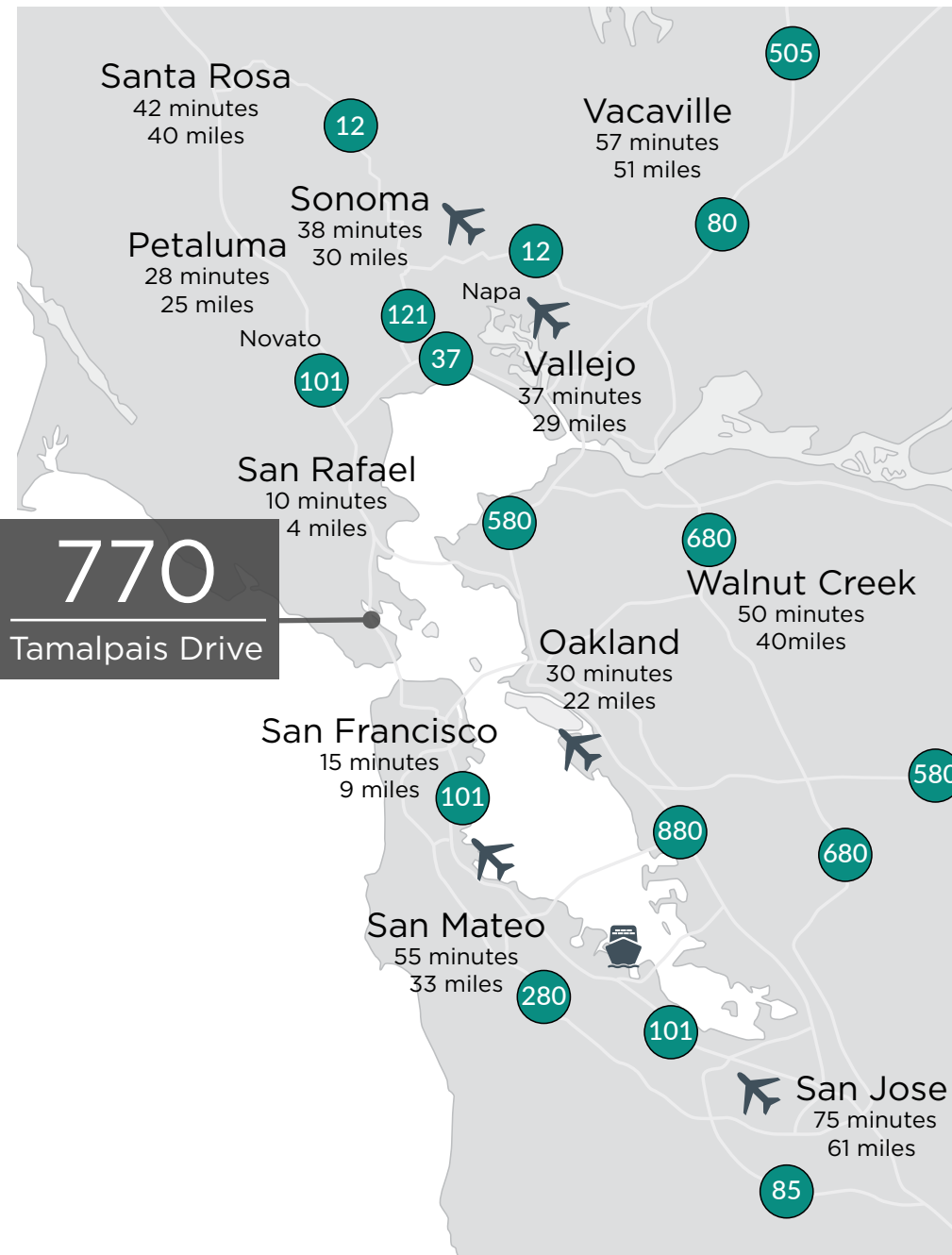


# Interior Premises



Although information has been obtained from sources deemed reliable, JLL does not make any guarantees, warranties or representations, express or implied, as to the completeness or accuracy as to the information contained herein. Any projections, opinions, assumptions or estimates used are for example only. There may be differences between projected and actual results, and those differences may be material. JLL does not accept any liability for any loss or damage suffered by any party resulting from reliance on this information. If the recipient of this information has signed a confidentiality agreement with JLL regarding this matter, this information is subject to the terms of that agreement. ©2025. Jones Lang LaSalle IP, Inc. All rights reserved.

# Location Overview



Located at the Corte Madera Town Center which includes numerous shopping, dining, and fitness amenities.

## TENANTS:



For more information, please contact:

**JULIE SOMMER**  
+1 415 755 3527  
julie.sommer@svn.com  
RE License #: 01169064

**GLEN DOWLING**  
+1 415 299 6868  
glen.dowling@jll.com  
RE License #: 00890450