

# Boise Plaza

Class A+ Office Opportunity

1111 W Jefferson Street  
Boise, ID 83702



Rafanelli  
& Nahas

Scott Schoenherr

208-631-7611  
scott@srafnah.com

Justin Vogel

208-869-8302  
justinv@rafnah.com



**Premier A+ Office Building**

**Ample Adjacent  
Parking**

**Onsite Fitness Center**

**Lobby Security/  
Concierge**

**Panoramic Views**

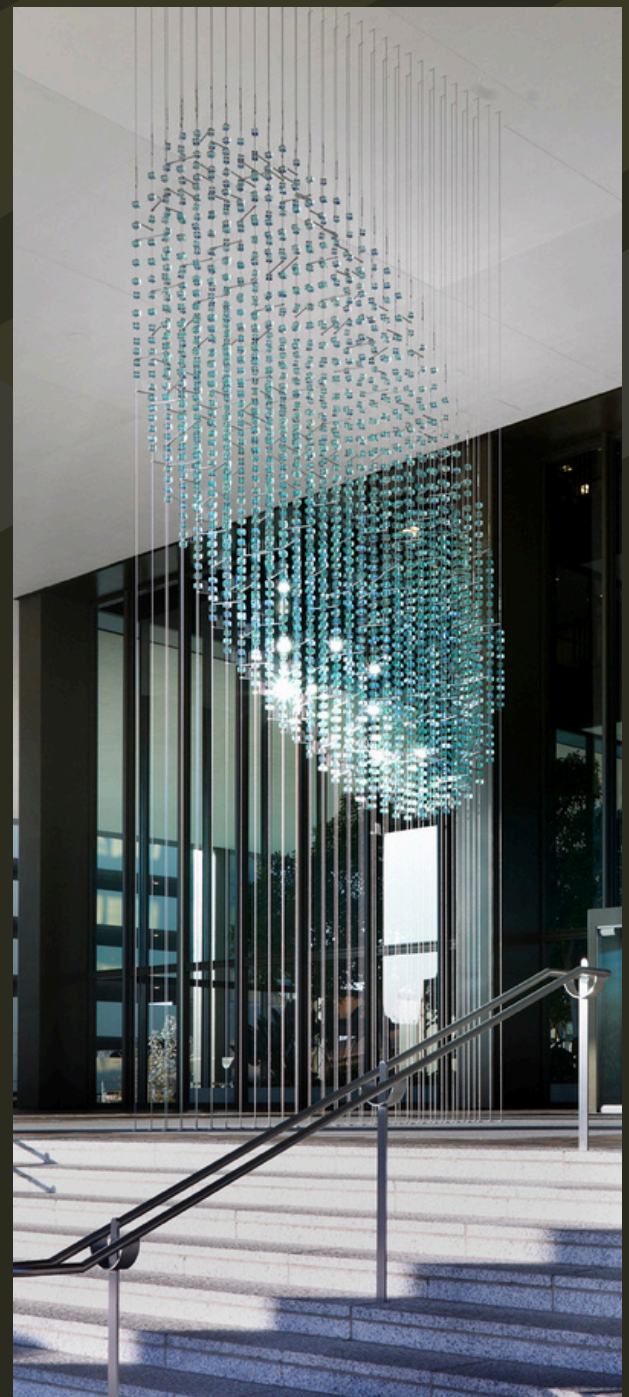
**Adjacent to Cherie-  
Buckner Webb Park**

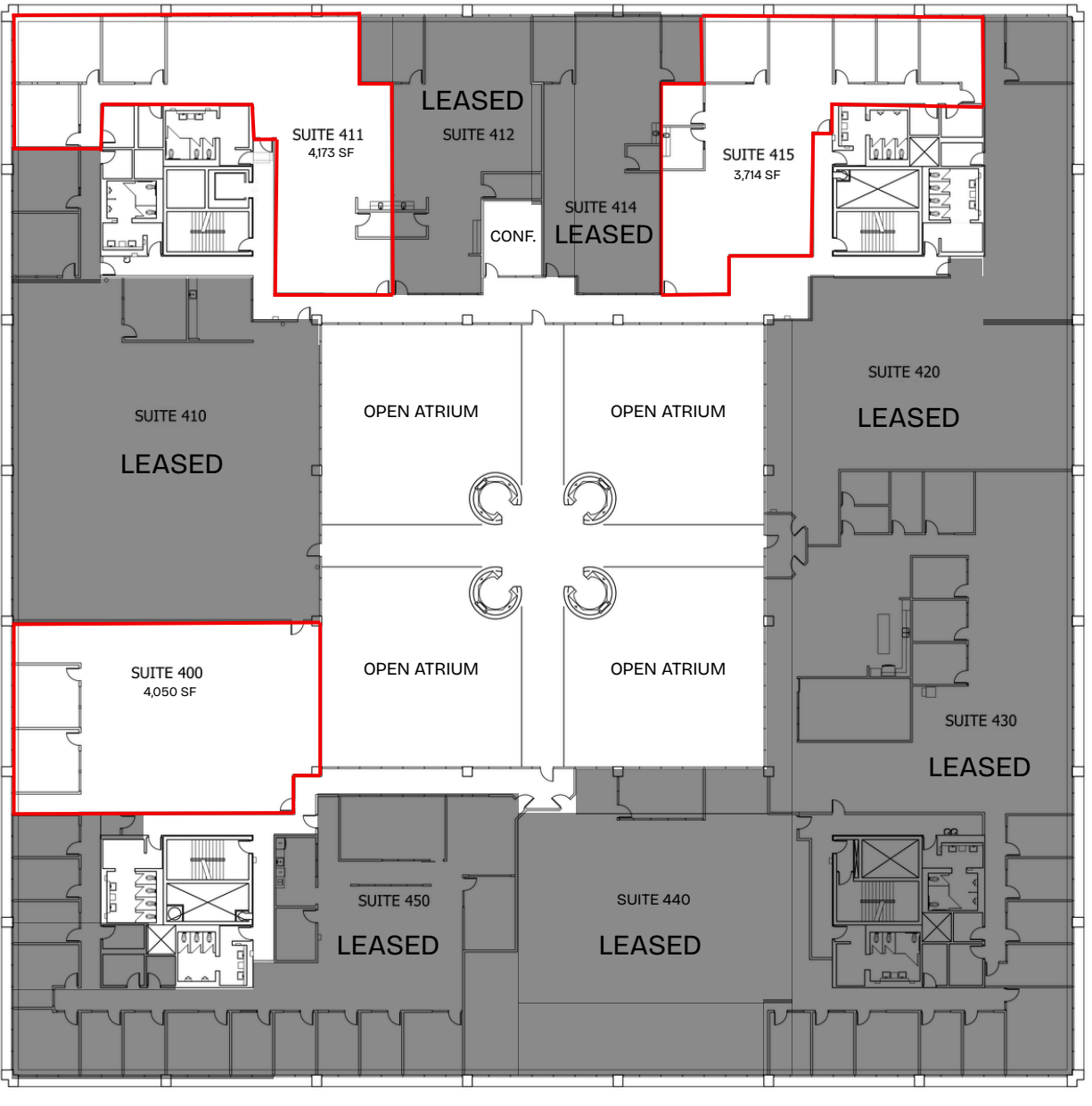
**Surface-Level Visitor  
Parking**



## Amenities and Features:

- Adjacent to Cherie Buckner-Webb Park
- Stunning 10,000-square-foot indoor atrium
- Convenient truck dock and service elevator
- Secure indoor bicycle storage
- Fully equipped showers and locker rooms
- On-site fitness center featuring:
  - State-of-the-art equipment
  - Daily fitness classes led by certified instructors
- Professional on-site security and reception services
- Direct access to a 950-space parking garage

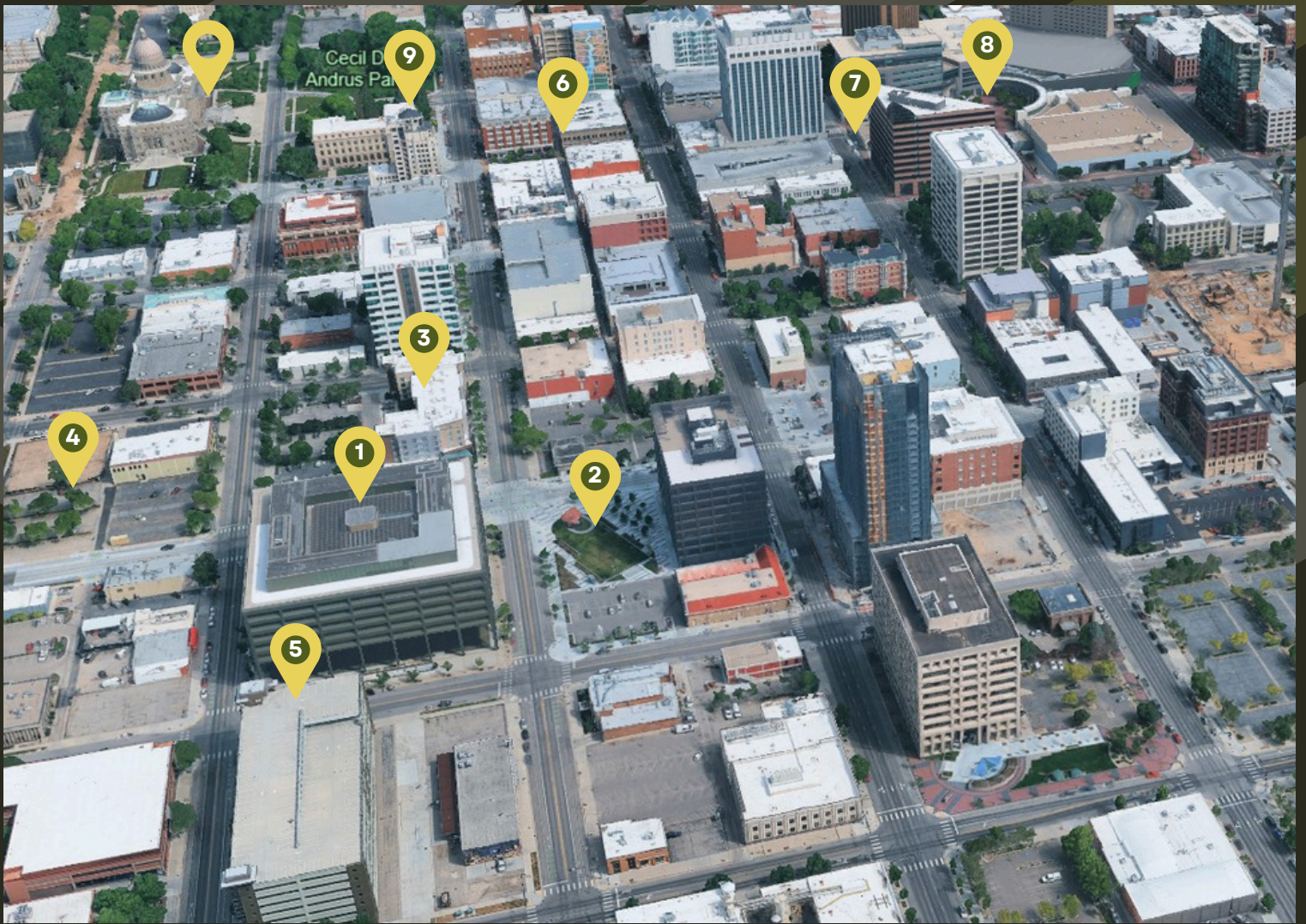




| Availability |                |
|--------------|----------------|
| Suites       | Square Footage |
| 411          | 4,173 RSF      |
| 414          | 2,581 RSF      |
| 415          | 3,714 RSF      |
| 400          | 4,050 RSF      |

**SPEC-BUILT SUITES**

**2,581 SF - 6,296 SF**



## Highly Walkable Location

- 1** Boise Plaza
- 2** Cherie Buckner-Webb Park  
1 minute walk
- 3** Hyatt Place Boise Hotel  
1 minute walk
- 4** Downtown Boise YMCA  
2 minute walk
- 5** Parking Garage  
1 minute walk
- 6** 8th Street Resturant Row  
1 minute walk
- 7** Regional Transit Bus Terminal  
5 minute walk
- 8** The Grove Plaza  
6 minute walk
- 9** US Post Office  
6 minute walk
- 10** Idaho State Capitol Building  
5 minute walk



## Overview :

Downtown Boise, Idaho continues to thrive as the cultural and economic heart of the Boise Metropolitan Area. Blending modern growth with historic charm, it offers a vibrant mix of business, entertainment, and outdoor lifestyle.

The area features:

- A dynamic mix of local businesses, startups, and established companies
- Walkable streets filled with restaurants, galleries, and shops
- Access to the Boise River Greenbelt for outdoor recreation
- A strong arts and culture scene, including theaters and museums

Boise's balance of livability, affordability (relative to major metros), and natural beauty continues to attract new residents and businesses.

## Highlights:

- Top 10 Best Places to Live
- Growing Tech and Startup Hub
- Access to outdoor recreation and trails
- Home to Boise State University



**Population:**

≈ 250,000+



**Income:**

≈ \$75,000 – \$80,000



**Unemployment:**

≈ 2.8% – 3.2%



**Commute Time:**

≈ 20–22 minutes