



FOR SALE \$704,995
5707 N INTERSTATE AVE
PORTLAND, OR 97217

- 2,238 SF 1960'S OFFICE/MEDICAL BUILDING, RM3 ZONING.
- BUILT OUT AS DENTAL CLINIC w/ MULTIPLE EXAM ROOMS, PRIVATE OFFICES, RECEPTION AREA, PRIVATE PARKING.
- URBAN RENEWAL ZONE. FLEXIBLE LEASE-TO-OWN OPTION.

ONLINE LISTING



MORE REALTY

www.MORErealty.com

16037 SW Upper Boones Ferry Rd, Ste 150
Tigard, OR 97224



Darryn Foor

Licensed Broker (OR)
darryn@darrynfoor.com
503-740-6300



Sean Davey

Licensed Broker (OR)
sdaveypdx@gmail.com
503-984-9531



ENTRY/LOBBY



PRIVATE OFFICE

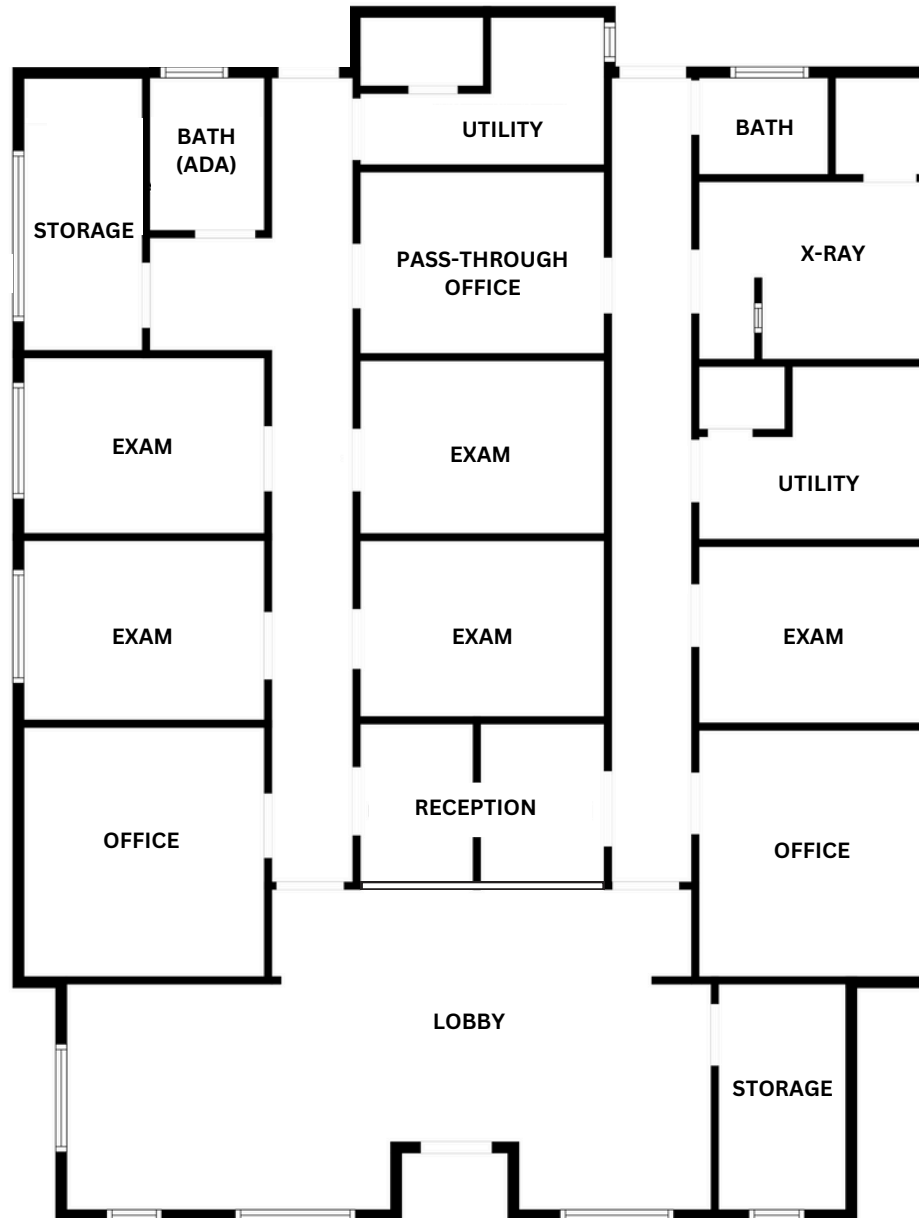


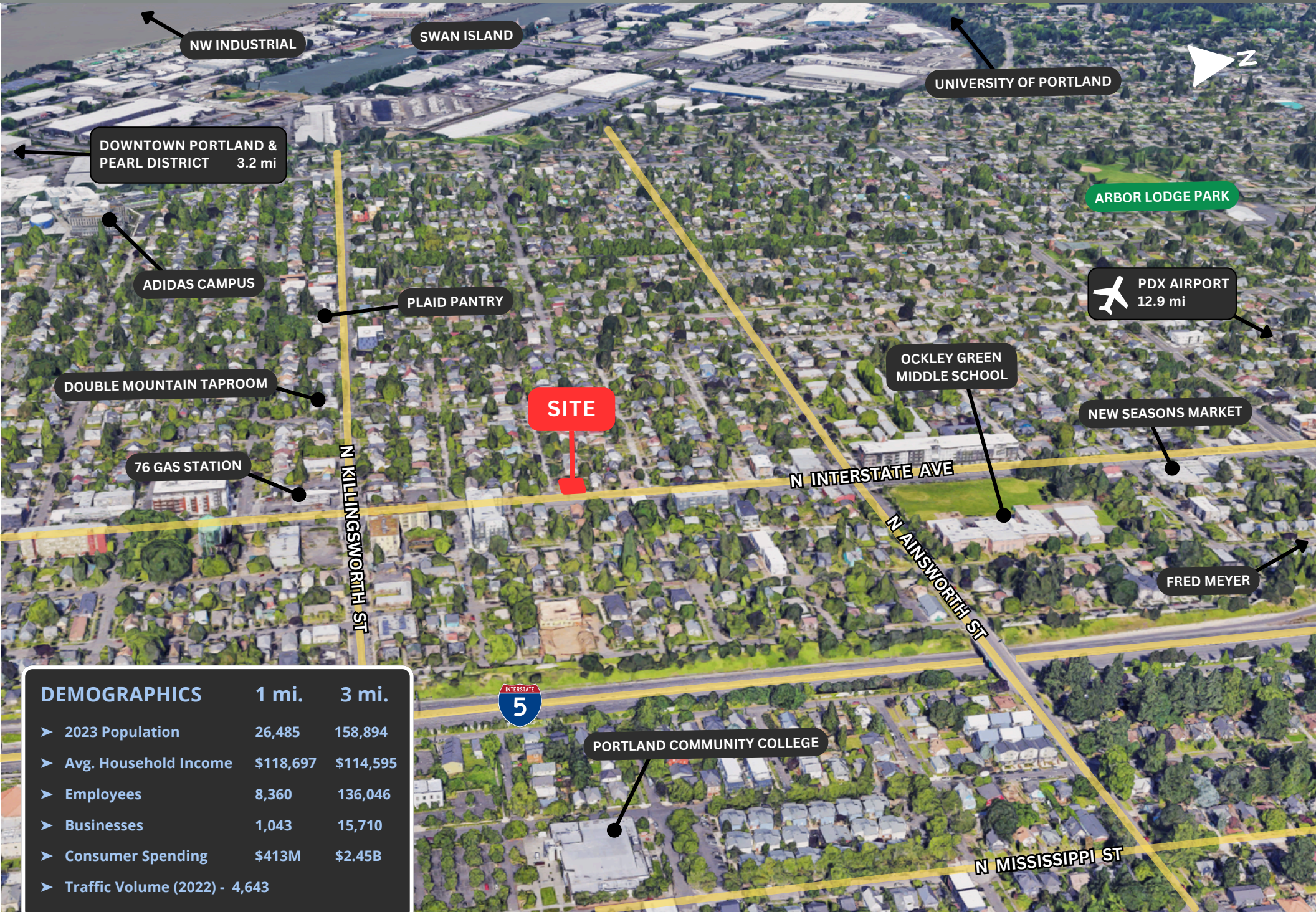
RECEPTION



TREATMENT ROOM

APPROX. 2,238 SF





NW INDUSTRIAL

SWAN ISLAND

UNIVERSITY OF PORTLAND

DOWNTOWN PORTLAND &
PEARL DISTRICT 3.2 mi

ARBOR LODGE PARK

ADIDAS CAMPUS

PLAID PANTRY

PDX AIRPORT
12.9 mi

DOUBLE MOUNTAIN TAPROOM

OCKLEY GREEN
MIDDLE SCHOOL

NEW SEASONS MARKET

76 GAS STATION

SITE

FRED MEYER

N KILLINGSWORTH ST

N INTERSTATE AVE

N AINSWORTH ST



PORTLAND COMMUNITY COLLEGE

N MISSISSIPPI ST

DEMOGRAPHICS	1 mi.	3 mi.
➤ 2023 Population	26,485	158,894
➤ Avg. Household Income	\$118,697	\$114,595
➤ Employees	8,360	136,046
➤ Businesses	1,043	15,710
➤ Consumer Spending	\$413M	\$2.45B
➤ Traffic Volume (2022) -	4,643	