

FOR LEASE > OFFICE BUILDING

2400 NW Prairie View Road

PLATTE CITY, MISSOURI



Full Service Rent:

\$18.00 PSF

PROPERTY FEATURES

- > Highly visible location in Platte City
- > Convenient access to Highways 92, 71 and I-29
- > Numerous amenities close by
- > 7,418 RSF available, can divide
- > Negotiable improvement allowance
- > Willing to lease 3 to 5 years

Colliers
INTERNATIONAL

MATT STOVER
+1 816 556 1116
KANSAS CITY, MO
matt.stover@colliers.com

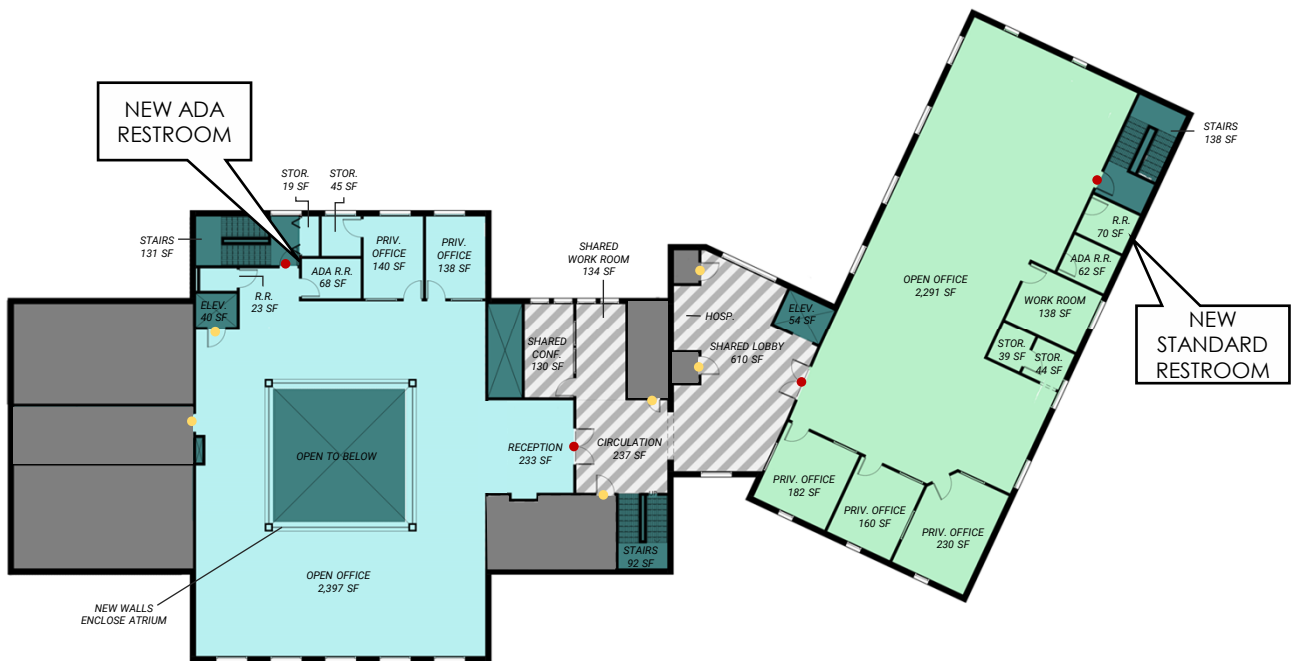
PAT COPPINGER
+1 816 556 1110
KANSAS CITY, MO
pat.coppinger@colliers.com

COLLIERS INTERNATIONAL
4520 Main Street, Suite 1000
Kansas City, MO 64111
www.colliers.com

SINGLE-TENANT POTENTIAL LAYOUT



TWO-TENANT POTENTIAL LAYOUT



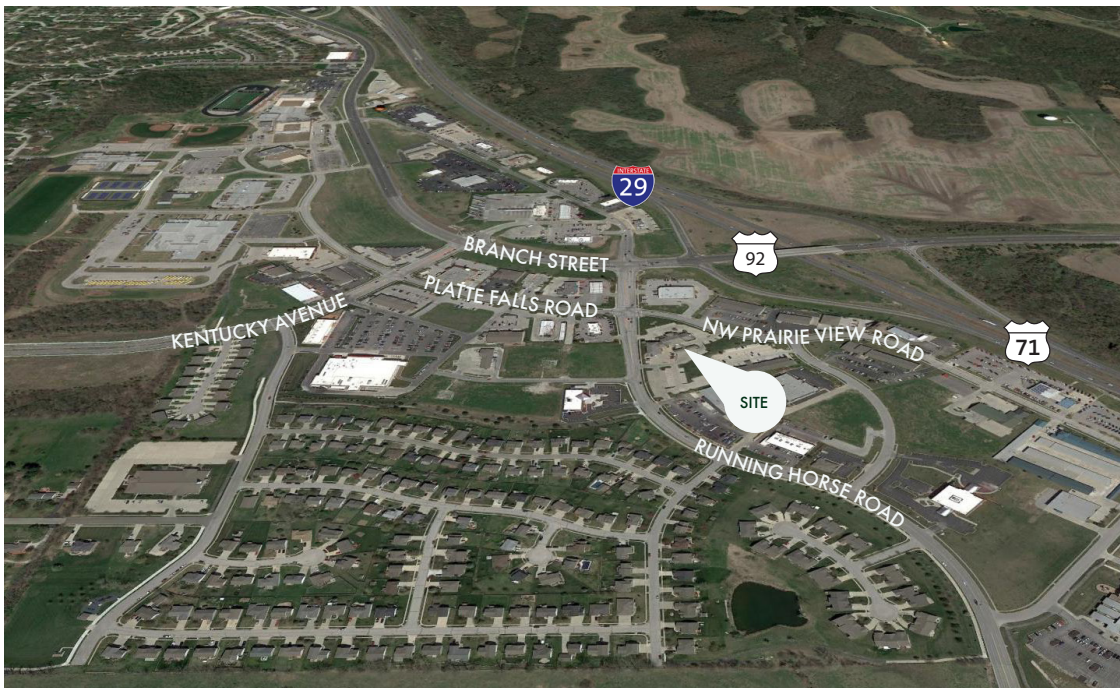
Contact Us:

MATT STOVER
+1 816 556 1116
KANSAS CITY, MO
matt.stover@colliers.com

PAT COPPINGER
+1 816 556 1110
KANSAS CITY, MO
pat.coppinger@colliers.com

COLLIERS INTERNATIONAL
4520 Main Street, Suite 1000
Kansas City, MO 64111
www.colliers.com

FOR LEASE > 2400 NW PRAIRIE VIEW ROAD, PLATTE CITY, MISSOURI



Contact Us:

MATT STOVER
+1 816 556 1116
KANSAS CITY, MO
matt.stover@colliers.com

PAT COPPINGER
+1 816 556 1110
KANSAS CITY, MO
pat.coppinger@colliers.com

COLLIERS INTERNATIONAL
4520 Main Street, Suite 1000
Kansas City, MO 64111
www.colliers.com

Colliers
INTERNATIONAL

This document has been prepared by Colliers International for advertising and general information only. Colliers International makes no guarantees, representations or warranties of any kind, expressed or implied, regarding the information including, but not limited to, warranties of content, accuracy and reliability. Any interested party should undertake their own inquiries as to the accuracy of the information. Colliers International excludes unequivocally all inferred or implied terms, conditions and warranties arising out of this document and excludes all liability for loss and damages arising there from. This publication is the copyrighted property of Colliers International and/or its licensor(s). © 2020. All rights reserved.