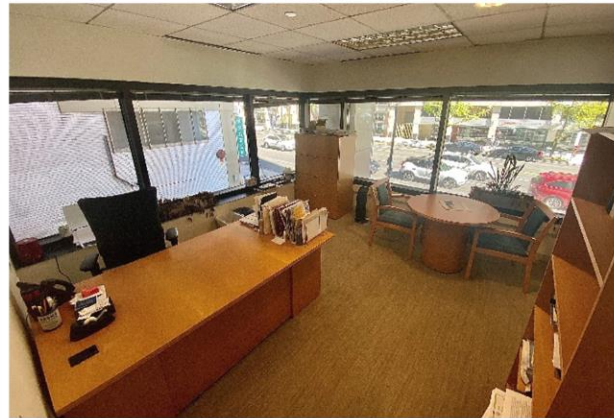


SUBLEASE AVAILABLE

1101 Vermont Avenue NW, Suites 200 & 401, Washington, DC

5,884-15,209 SF Office Space

Available Immediately



DETAILS

- Office space available immediately
 - Suite 200: 9,384 SF
 - Suite 401: 5,884 SF
- Rate is \$39.50 SF
- Term through:
 - Suite 200: 8/31/2026
 - Suite 401: 7/31/2024

HIGHLIGHTS

- Direct Elevator Exposure
- Conferencing Facility and Fitness Center
- Office Intensive Suites with Large and Executive Private Offices, Workstations, Conference Rooms, Pantry, and Private Restrooms
- 2 blocks from McPherson Square Metro Station (Orange, Silver, and Blue Lines)
- Full Floor Opportunity on 2nd Floor
- Option to Sublease 260SF of Storage Space on the LL through 8/31/2026

CONTACT INFORMATION

Haze McCrary

Executive Vice President

O: 202.844.4088 x 4000

C: 202.253.3605

hmccrary@broadstreetrealty.com

Ben Schiesl

Assistant Vice President

O: 202.844.4088 x 4001

C: 703.568.1439

bschiesl@broadstreetrealty.com

Broad Street Realty, Inc.

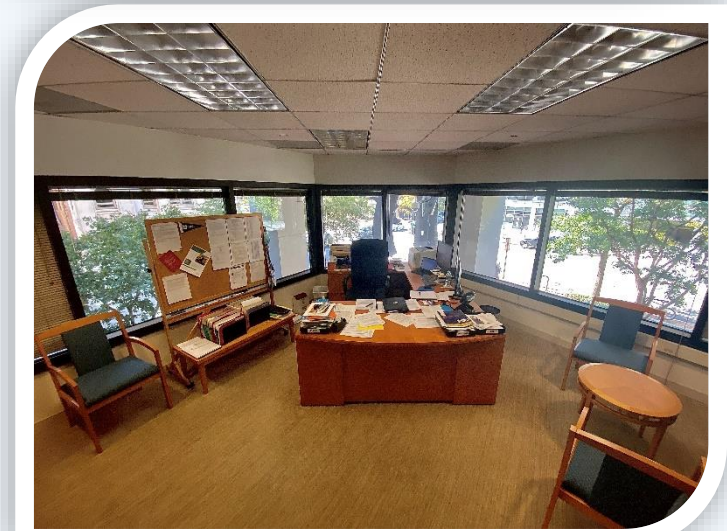
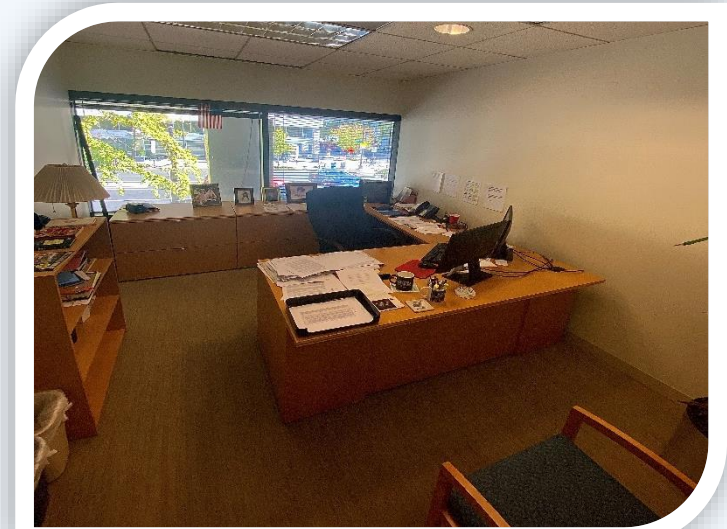
1015 15th Street NW | Washington, DC 20005

www.broadstreetrealty.com

Washington, DC | Maryland | Virginia | Colorado

SUBLEASE AVAILABLE: Suite 200

1101 Vermont Avenue NW, Washington, DC



CONTACT INFORMATION

Haze McCrary

Executive Vice President

O: 202.844.4088 x 4000

C: 202.253.3605

hmccrary@broadstreetrealty.com

Ben Schiesl

Assistant Vice President

O: 202.844.4088 x 4001

C: 703.568.1439

bschiesl@broadstreetrealty.com

Broad Street Realty, Inc.

1015 15th Street NW | Washington, DC 20005

www.broadstreetrealty.com

Washington, DC | Maryland | Virginia | Colorado

SUBLEASE AVAILABLE: Suite 401

1101 Vermont Avenue NW, Washington, DC



CONTACT INFORMATION

Haze McCrary

Executive Vice President

O: 202.844.4088 x 4000

C: 202.253.3605

hmccrary@broadstreetrealty.com

Ben Schiesl

Assistant Vice President

O: 202.844.4088 x 4001

C: 703.568.1439

bschiesl@broadstreetrealty.com

Broad Street Realty, Inc.

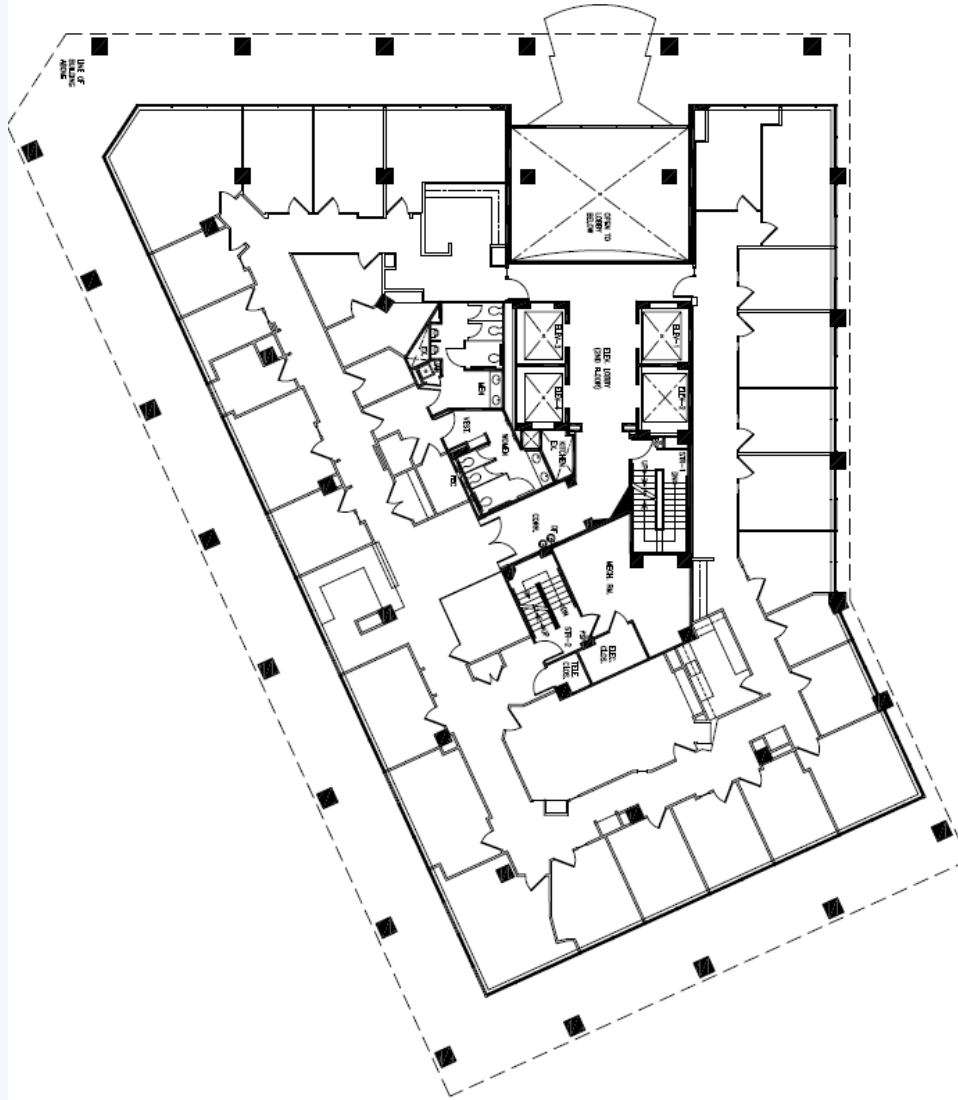
1015 15th Street NW | Washington, DC 20005

www.broadstreetrealty.com

Washington, DC | Maryland | Virginia | Colorado

SUBLEASE AVAILABLE: SUITE 200 FLOORPLAN

1101 Vermont Avenue NW, Washington, DC



CONTACT INFORMATION

Haze McCrary

Executive Vice President

O: 202.844.4088 x 4000

C: 202.253.3605

hmccrary@broadstreetrealty.com

Ben Schiesl

Assistant Vice President

O: 202.844.4088 x 4001

C: 703.568.1439

bschiesl@broadstreetrealty.com

Broad Street Realty, Inc.

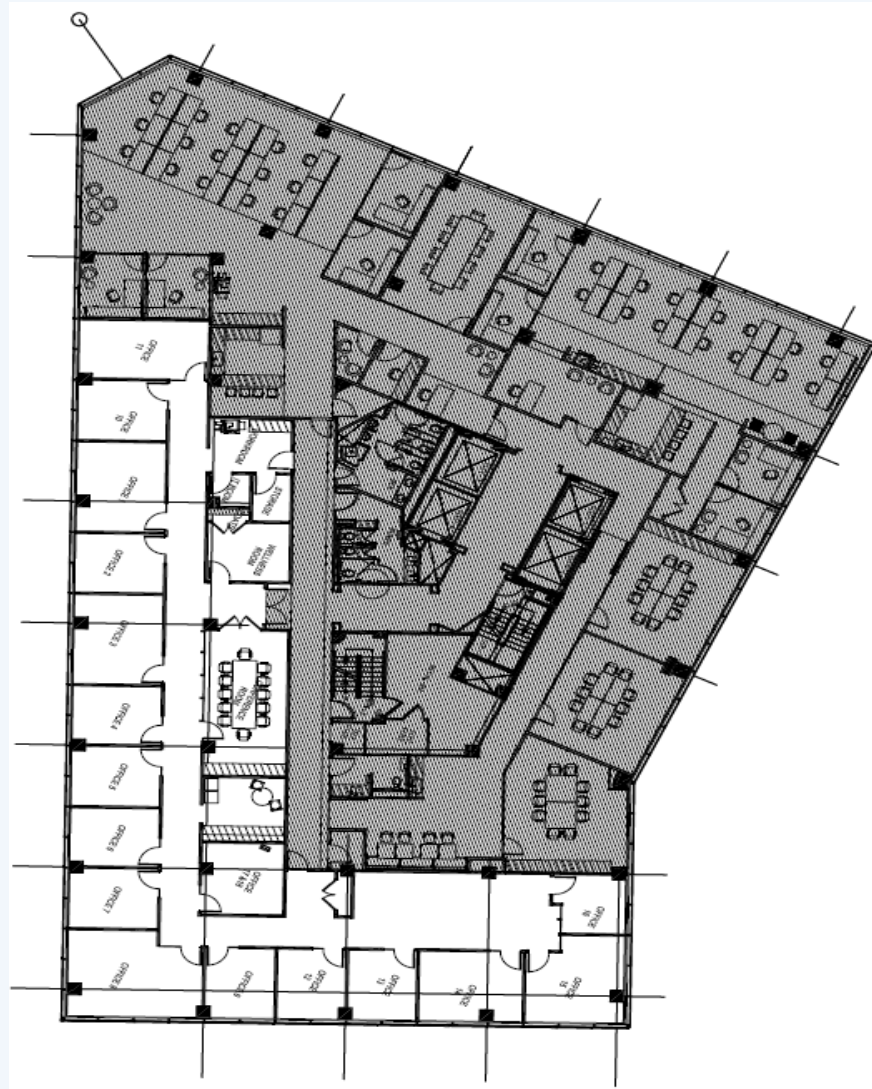
1015 15th Street NW | Washington, DC 20005

www.broadstreetrealty.com

Washington, DC | Maryland | Virginia | Colorado

SUBLEASE AVAILABLE: SUITE 401 FLOORPLAN

1101 Vermont Avenue NW, Washington, DC



CONTACT INFORMATION

Haze McCrary

Executive Vice President

O: 202.844.4088 x 4000

C: 202.253.3605

hmccrary@broadstreetrealty.com

Ben Schiesl

Assistant Vice President

O: 202.844.4088 x 4001

C: 703.568.1439

bschiesl@broadstreetrealty.com

Broad Street Realty, Inc.

1015 15th Street NW | Washington, DC 20005

www.broadstreetrealty.com

Washington, DC | Maryland | Virginia | Colorado