

# FOR SALE

1018 W HILDEBRAND AVE, SAN ANTONIO, TX 78201



## ABOUT THE PROPERTY:

1018 W Hildebrand Ave is a 1,189 SF mixed-use commercial property positioned in San Antonio's North Central submarket, just minutes from the vibrant Beacon Hill neighborhood. This property boasts high visibility and traffic, nestled among various retailers and dining establishments. With convenient access to IH-10, it presents a prime opportunity for retailers, restaurants, wellness, and professional services.

## FEATURES:

- 1,189 SF mixed-use commercial property
- High visibility and traffic area (27,483 VPD)
- Owner financing available
- Quick access to Loop 1604 and IH-10
- Perfect for retailers, restaurants, wellness and professional services



# EXTERIOR HIGHLIGHTS

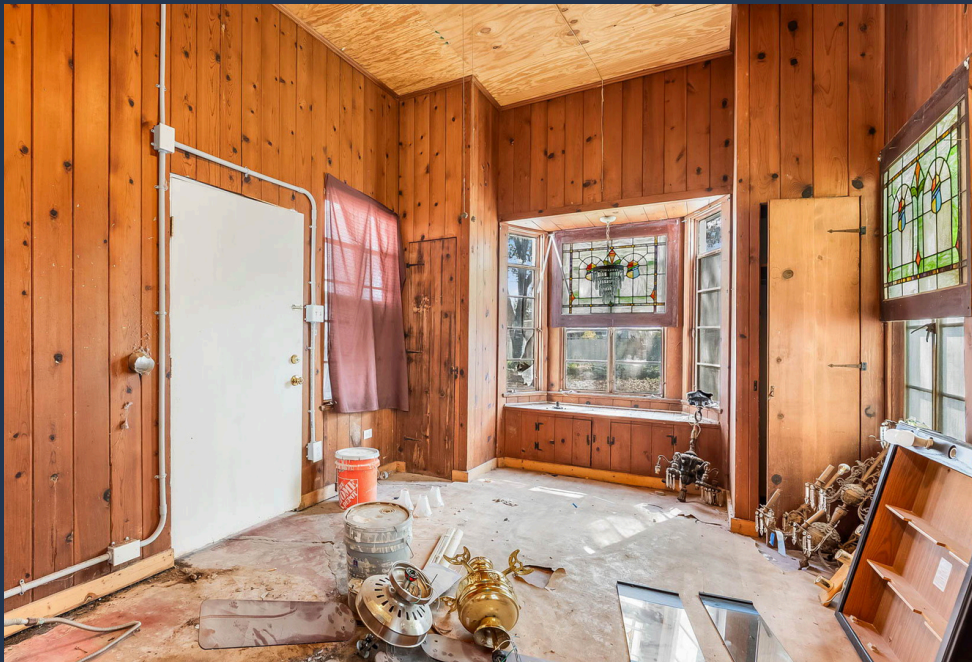
---





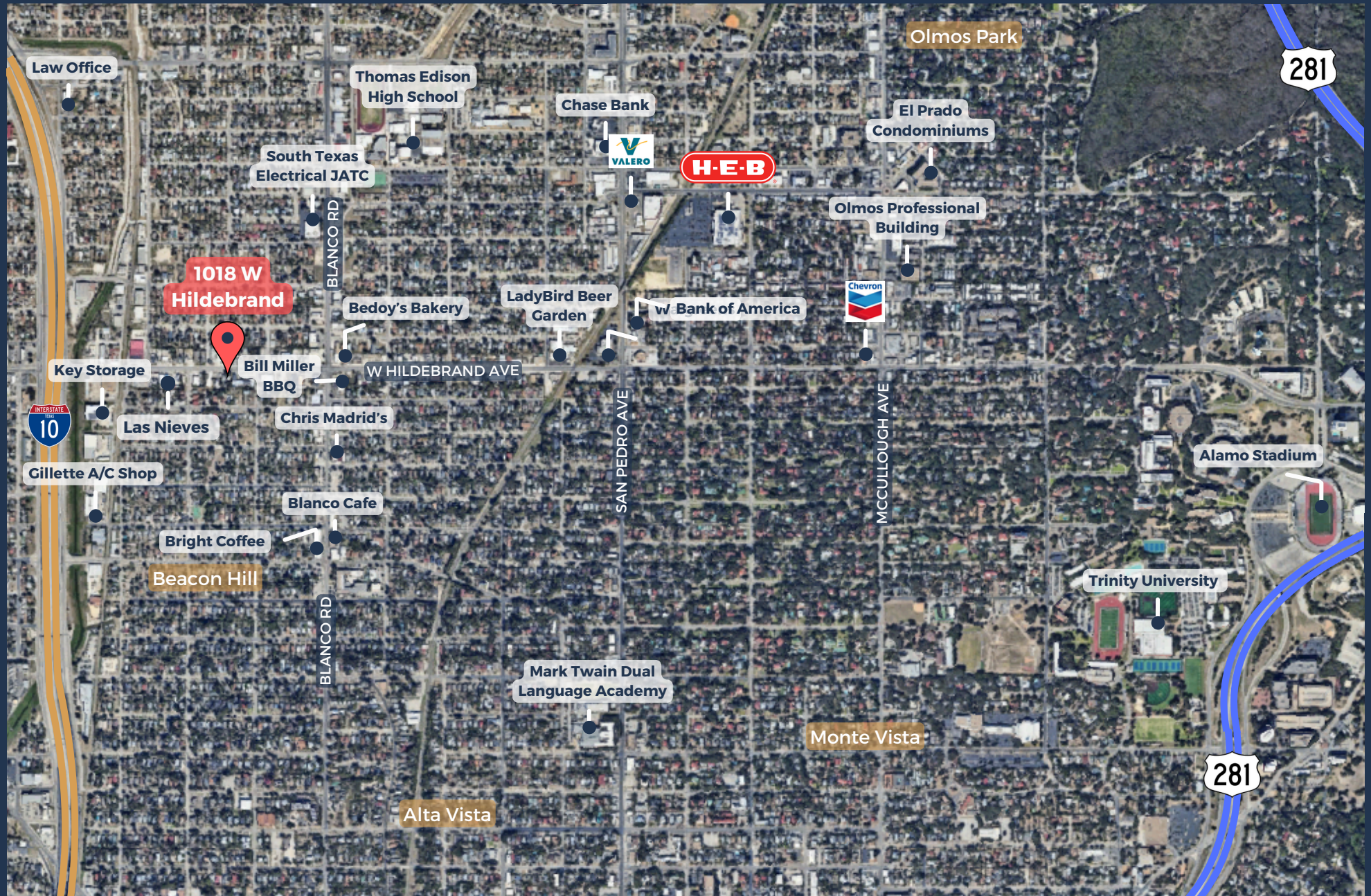
# INTERIOR HIGHLIGHTS

---





# AREA OVERVIEW





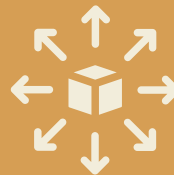
# AREA OVERVIEW & DEMOGRAPHICS



Situated along IH-10 in the vibrant Beacon Hill neighborhood, providing direct access to Downtown San Antonio.



Consistent year-over-year population growth.



Attractive location for restaurants, store fronts, and various retail uses.



27,483 vehicles-per-day along W Hildebrand Ave.



141,919 households within a 5-mile radius.





## CONTACT OUR TEAM



**Colin McLellan**

Partner

[cmclellan@llanorealty.com](mailto:cmclellan@llanorealty.com)

(210) 908-6345



**Stacy Grosse**

Associate

[sgrosse@llanorealty.com](mailto:sgrosse@llanorealty.com)

(210) 886-3884