

# INTRODUCING - PORT CITY CENTER

## For Lease or Build to Suit

812-816 Richmond Hwy & 16 Thurman Rd | Richmond, VA 23224



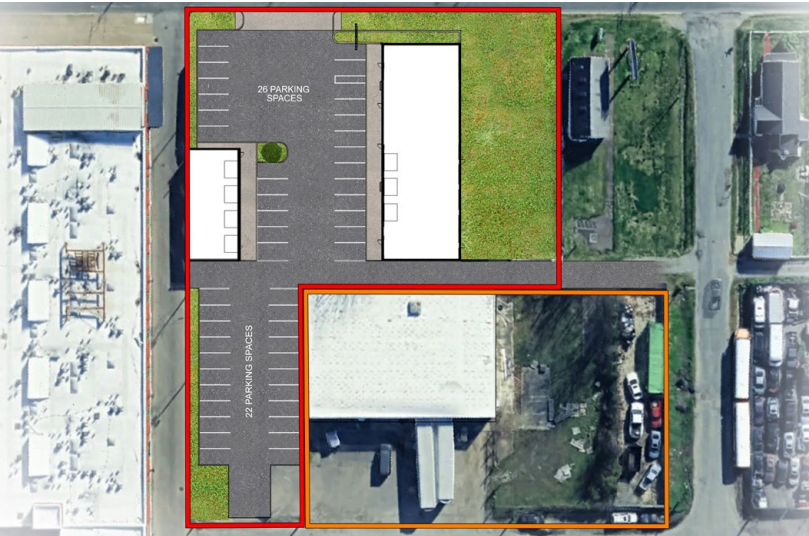
## Retail | Available 1st Qtr 2025



### PROPERTY HIGHLIGHTS

#### RETAIL: 812-816 Richmond Highway

- 1,909 SF
- 5,502 SF (div)
- 8,015 SF adjacent green space
- 20,000+/- SF Build to Suit potential
- 40± parking spaces



John Jay Schwartz, MCR, RPA  
phone (804) 350-1866  
jjschwartz@havesitewilltravel.com  
www.TheManwithSquareFeet.com

# INTRODUCING - PORT CITY CENTER

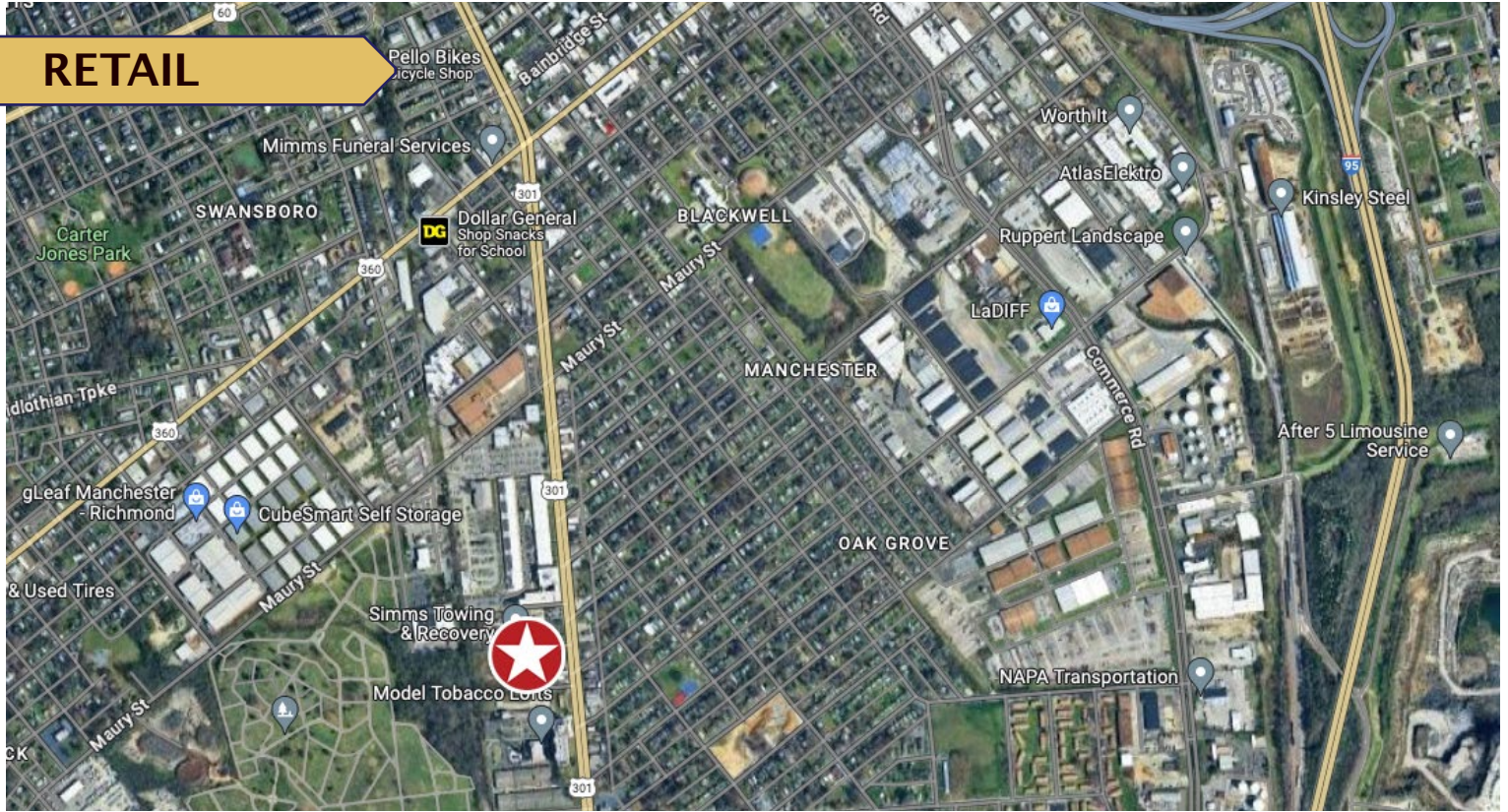
## For Lease or Build to Suit

812-816 Richmond Hwy & 16 Thurman Rd | Richmond, VA 23224



## Retail | Available 1st Qtr 2025

### RETAIL



John Jay Schwartz, MCR, RPA  
phone (804) 350-1866  
jjschwartz@havesitewilltravel.com  
www.TheManwithSquareFeet.com



# INTRODUCING - PORT CITY CENTER

## For Lease or Build to Suit

812-816 Richmond Hwy & 16 Thurman Rd | Richmond, VA 23224



### Industrial | Available 1st Qtr 2025

**WAREHOUSE**



#### WAREHOUSE: 16 Thurman Road

- 8,475 SF
- 18' ceiling heights
- 5 loading dock roll-up doors
- 9,412 SF outdoor fenced storage yard



John Jay Schwartz, MCR, RPA  
phone (804) 350-1866  
jjschwartz@havesitewilltravel.com  
www.TheManwithSquareFeet.com



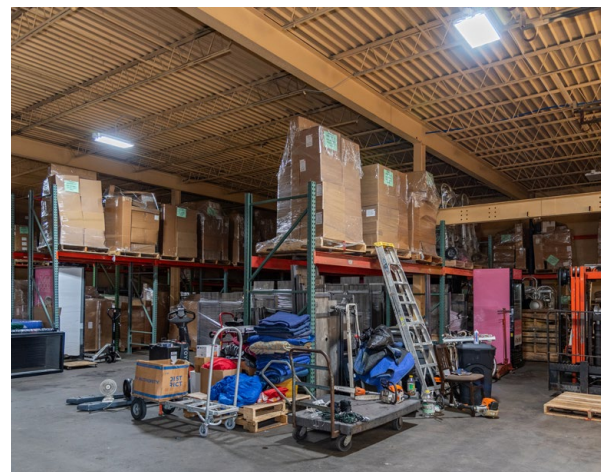
# INTRODUCING - PORT CITY CENTER

## For Lease or Build to Suit

812-816 Richmond Hwy & 16 Thurman Rd | Richmond, VA 23224



## Industrial | Available 1st Qtr 2025



John Jay Schwartz, MCR, RPA  
phone (804) 350-1866  
jjschwartz@havesitewilltravel.com  
www.TheManwithSquareFeet.com

