

FOR LEASE

910 SHERWOOD DRIVE
SUITE 14
LAKE BLUFF, IL 60044

CONTACT US TODAY:

Eric Wagener

847-706-7155

ewagener@owenwagener.com

Owen Wagener & Co.

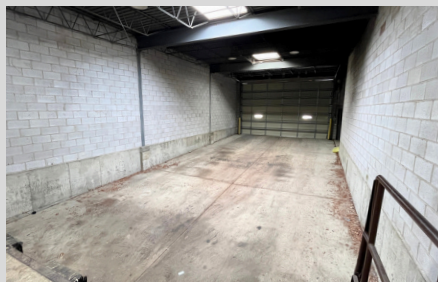
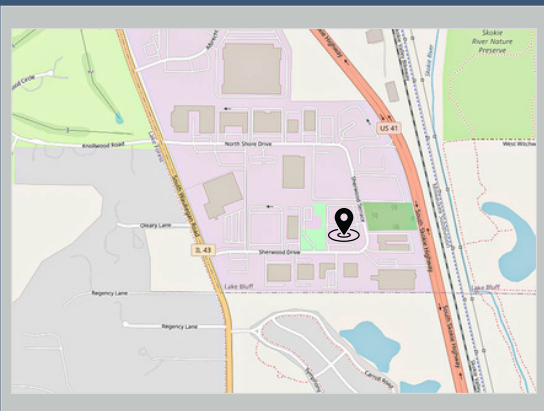
37 Sherwood Terrace

Suite 122

Lake Bluff, IL 60044

www.owenwagener.com

SINGLE-STORY FLEX BUILDING



SPECS:

- GREAT NORTH SHORE LOCATION
- TWO DOCKS W/ FUNCTIONAL LAYOUT
- MINUTES TO I-94 & RT. 41 INTERCHANGE
- EXCELLENT NATURAL LIGHT
- IMMEDIATE OCCUPANCY
- PROFESSIONALLY MANAGED & MAINTAINED

Space Available:	2,062 SF
Total Building Size:	18,198 SF
Description:	Premium Flex Space
Parking:	Ample
Year Built	1996
Heat:	Gas Forced Air
Monthly Rent:	\$2,500.00
Fully Air-Conditioned:	Yes
Loading:	Two (2) Docks
Skylights:	One (1) skylight

910 SHERWOOD DRIVE, SUITE 14
LAKE BLUFF, IL 60044

2,062 SF

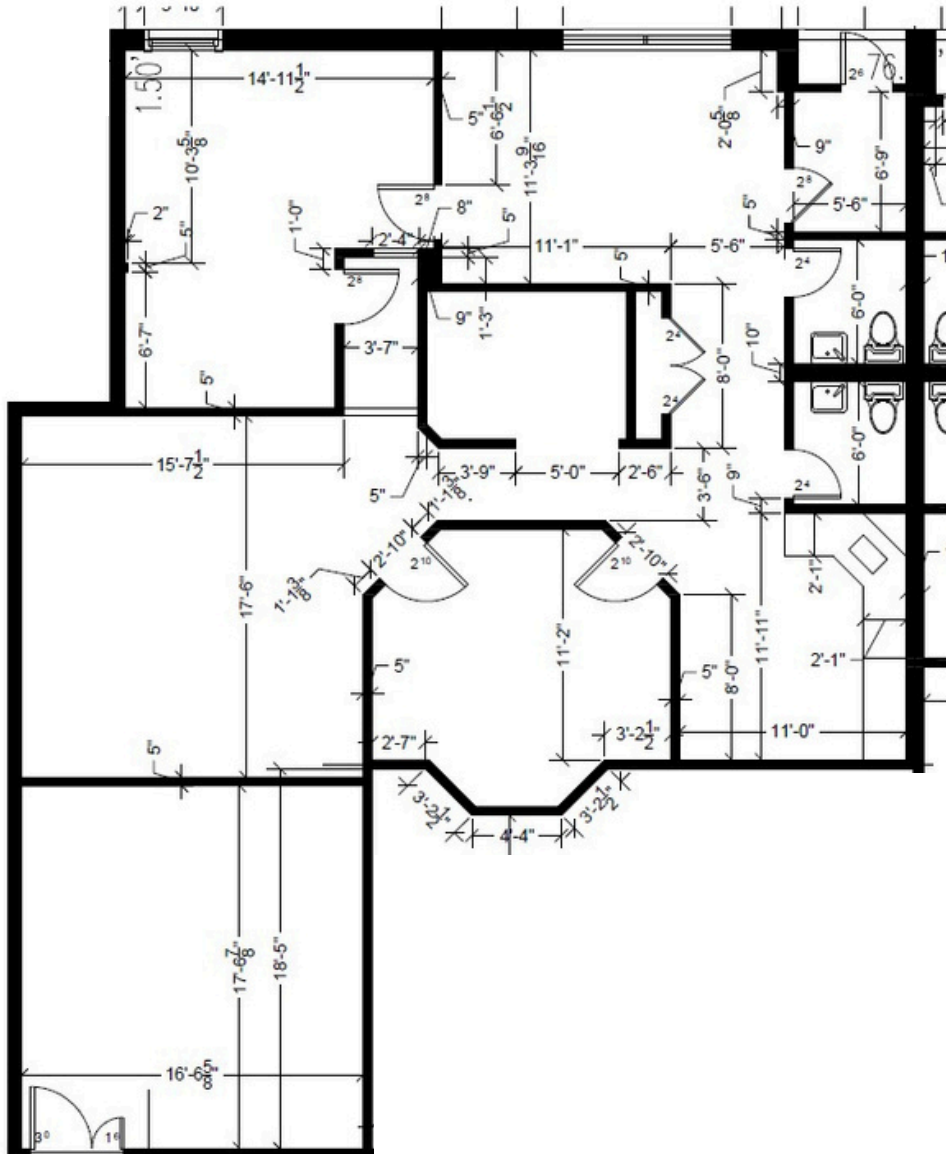


YOUR CHICAGOLAND COMMERCIAL
REAL ESTATE EXPERT, SINCE 1964.

WWW.OWENWAGENER.COM

910 SHERWOOD DRIVE, SUITE 14
LAKE BLUFF, IL 60044

2,062 SF



YOUR CHICAGOLAND COMMERCIAL
REAL ESTATE EXPERT, SINCE 1964.

WWW.OWENWAGENER.COM