



Experiences like
no other.

ROCKY POINT CENTRE



Office Space for Lease
1,307 to 11,491 RSF

3030 NORTH ROCKY POINT DRIVE — TAMPA, FLORIDA


PARMENTER

CBRE

Prosper. Profit. Play.

Rocky Point Centre is located just off of SR-60 and minutes from Tampa International Airport. Convenient for commuters in Pinellas County and most of Hillsborough. It is at the Western edge of the Westshore submarket, which has excellent water views. Easy access to SR-60, I-275, I-4, Veterans Expressway, Suncoast Expressway and SR-92.



ROCKY POINT CENTRE

Courtney Campbell Trail

LOCATION HIGHLIGHTS



Centrally located between prime labor markets: Hillsborough & Pinellas County



Easy access to I-275 and Veteran's Expressway



5 minutes to Tampa International Airport



Spectacular panoramic views of Tampa Bay



Steps away from the Courtney Campbell Trail

PROPERTY HIGHLIGHTS



Over \$2M in renovations completed



Building conference room



Fitness center with lockers and showers



On-site cafe

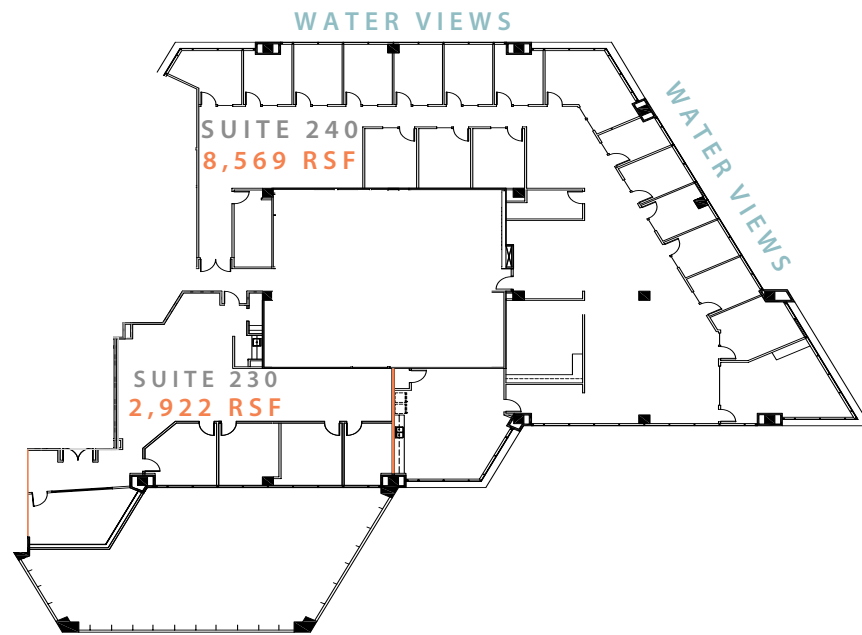


4.0/1,000 SF parking ratio

Availabilities

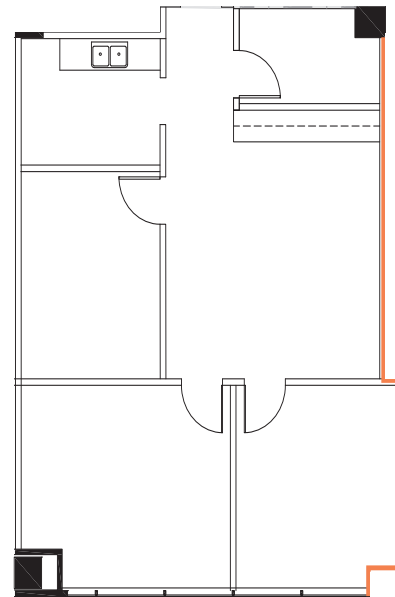
Suites 230 + 240 Contiguous

11,491 RSF



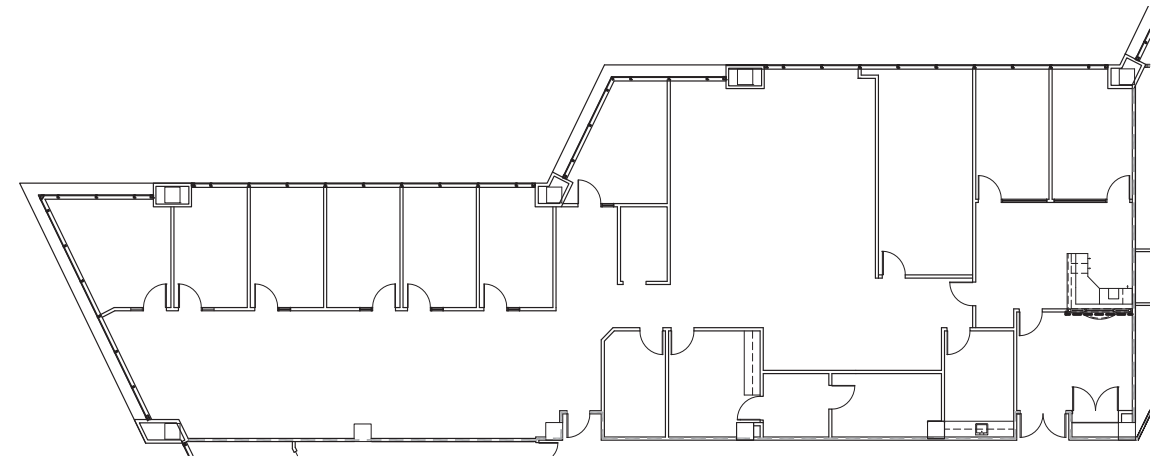
Suite 270

1,307 RSF



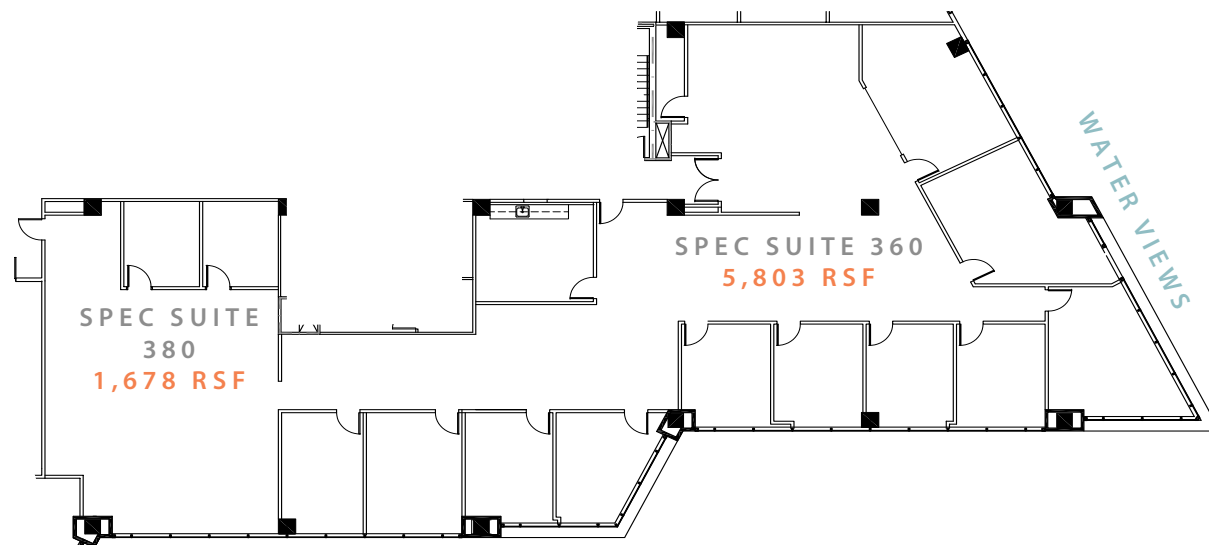
Suite 460

6,504 RSF



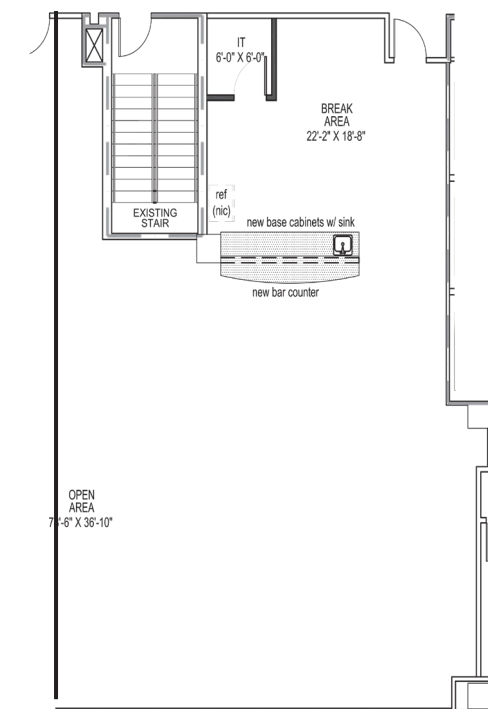
Suites 360 + 380 Contiguous

7,481 RSF



Suite 480 (Spec)

1,971 RSF





ROCKY POINT CENTRE



Contact

LARA SIEDER

First Vice President

T +1 727 871 2145

lara.sieder@cbre.com

© 2024 CBRE, Inc. All rights reserved. This information has been obtained from sources believed reliable, but has not been verified for accuracy or completeness. You should conduct a careful, independent investigation of the property and verify all information. Any reliance on this information is solely at your own risk. CBRE and the CBRE logo are service marks of CBRE, Inc. All other marks displayed on this document are the property of their respective owners, and the use of such logos does not imply any affiliation with or endorsement of CBRE. Photos herein are the property of their respective owners. Use of these images without the express written consent of the owner is prohibited.