



PROPERTY DETAILS

SIZE	2,433 SF (Entire 2nd Floor)
RENT	\$2.75 SF Modified Gross
OCCUPANCY	Immediate
PARKING	Four spaces (2 tandem) free!!
Features	<ul style="list-style-type: none">Private outdoor patioDirect access to the suite from the parking lotLarge private executive officesPrime Beverly Hills adjacentOffice space at extremely low Rental rateLocated between Pico and Olympic Blvd.

CONTACT Jeffrey Politz
310.850.1500
jpolitz1@aol
AGT DRE# 01132270

MAXAM
PROPERTIES

Commercial & Industrial Real Estate

Maxam Properties
3805 Canfield Ave., Suite A Culver City, CA 90232
310.287.2800 || DRE 00825736

No warranty or representation is made to the accuracy of the foregoing information.
Terms of sale or lease are subject to change or withdrawal without notice.

1157 S BEVERLY DR., BEVERLY HILLS, CA 90212



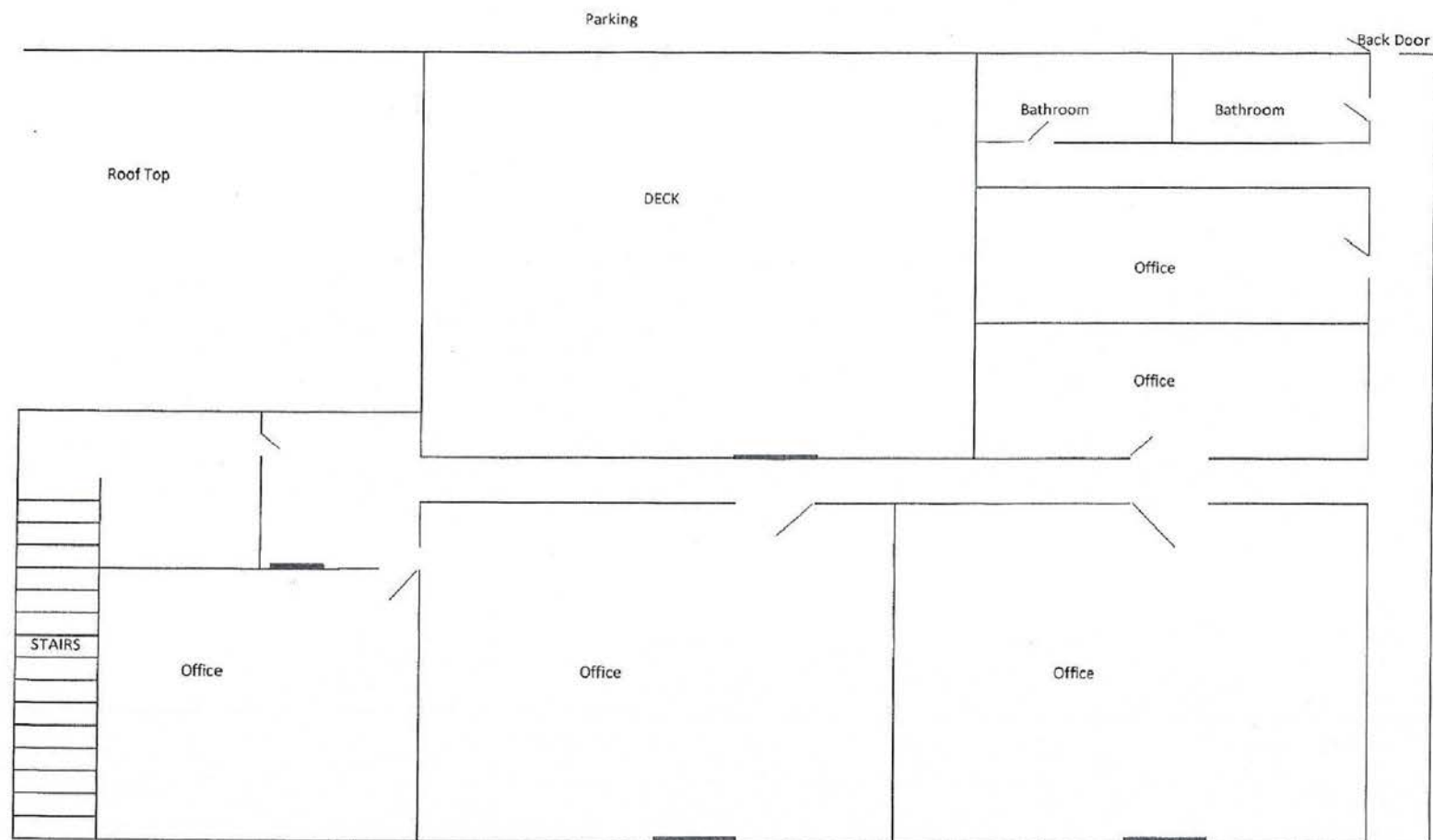
INTERIOR PHOTOS



PRIVATE OUTDOOR PATIO



FLOOR PLAN



1157 S Beverly Drive, 2nd Floor