

12395 DELTA STREET
TAYLOR, MICHIGAN

INDUSTRIAL FOR LEASE
11,000 Square Feet Available



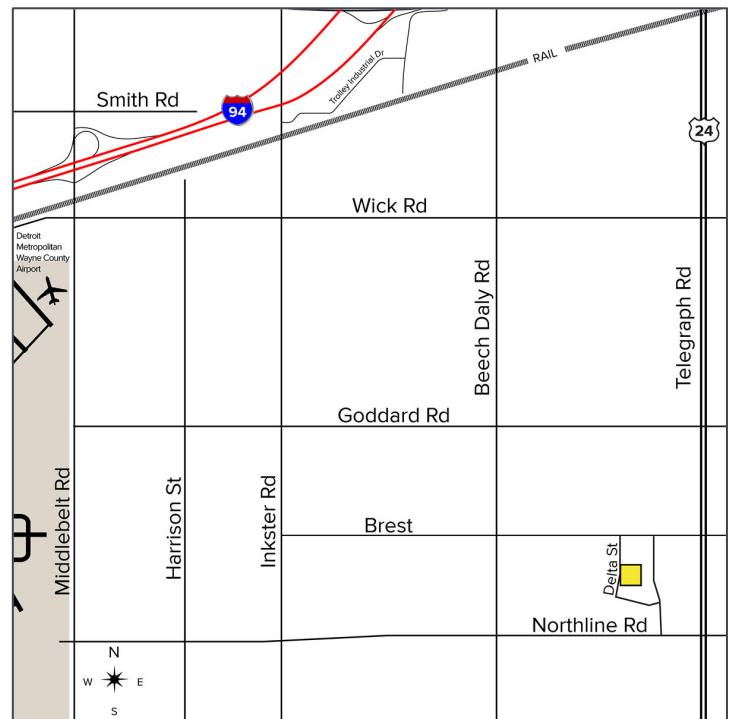
**SIGNATURE
ASSOCIATES**
KNOW SIGNATURE | KNOW RESULTS

METRO TELEGRAPH INDUSTRIAL PARK



PROPERTY FEATURES

- 11,000 square feet available
- 2,500 sq. ft. office and mezzanine storage
- 18' clear height
- (1) 12' x 14' grade level door, (1) truckwell
- Zoned I-1, Lt Industrial
- 20 parking spaces, paved lot
- 600 amps, 480 volts power
- Located near I-94, Telegraph Road, and Detroit Metro Airport
- Air conditioned
- Lease Rate: \$9.50/sq. ft. NNN



For more information, please contact:

JUSTIN GAFFREY
(248) 799 3143
jgaffrey@signatureassociates.com

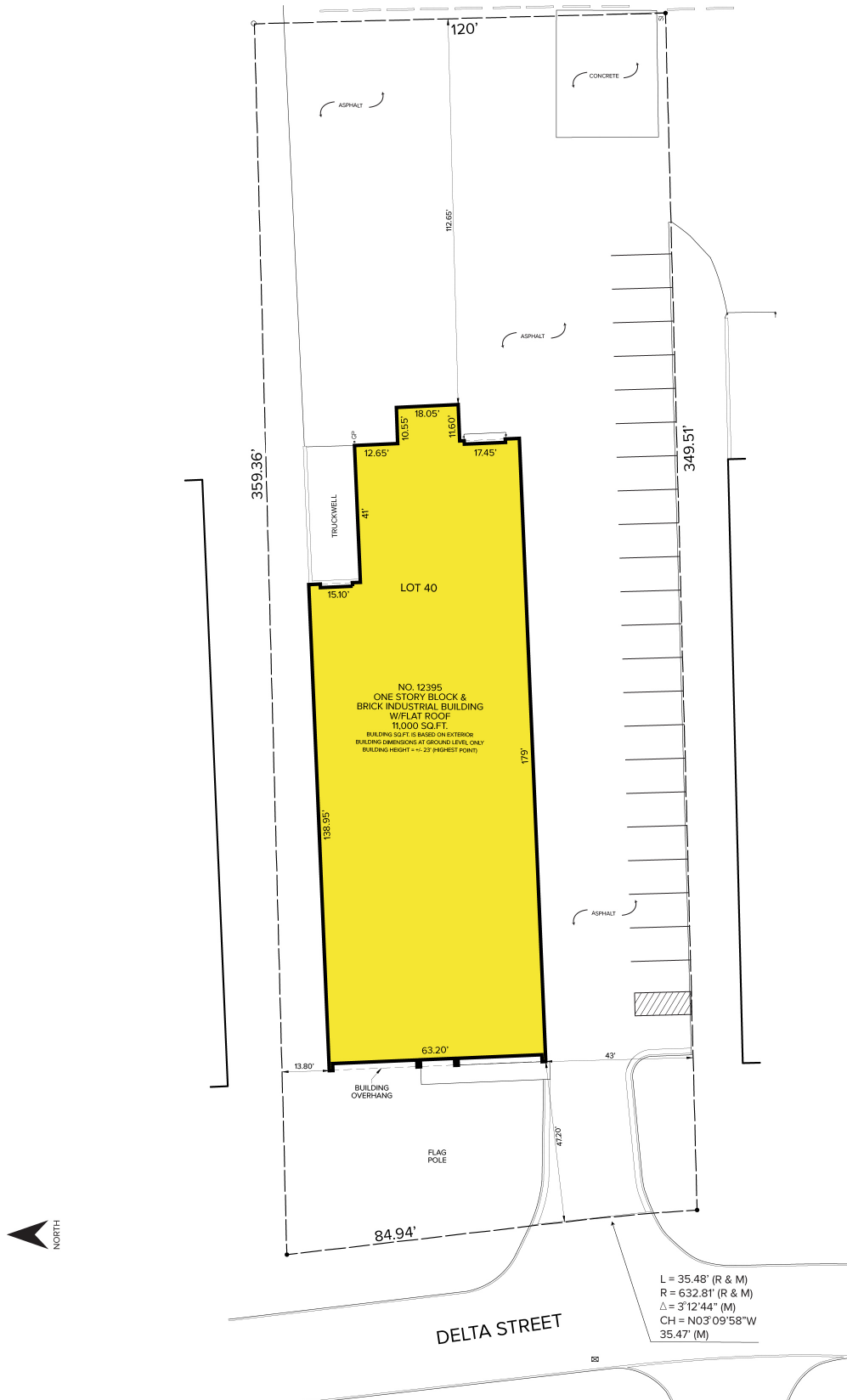
SIGNATURE ASSOCIATES
One Towne Square, Suite 1200
Southfield, MI 48076
www.signatureassociates.com

12395 Delta Street – Taylor, Michigan

Industrial For Lease

11,000
Square Feet
AVAILABLE

Site Plan



For more information, please contact:

JUSTIN GAFFREY
(248) 799 3143
jgaffrey@signatureassociates.com

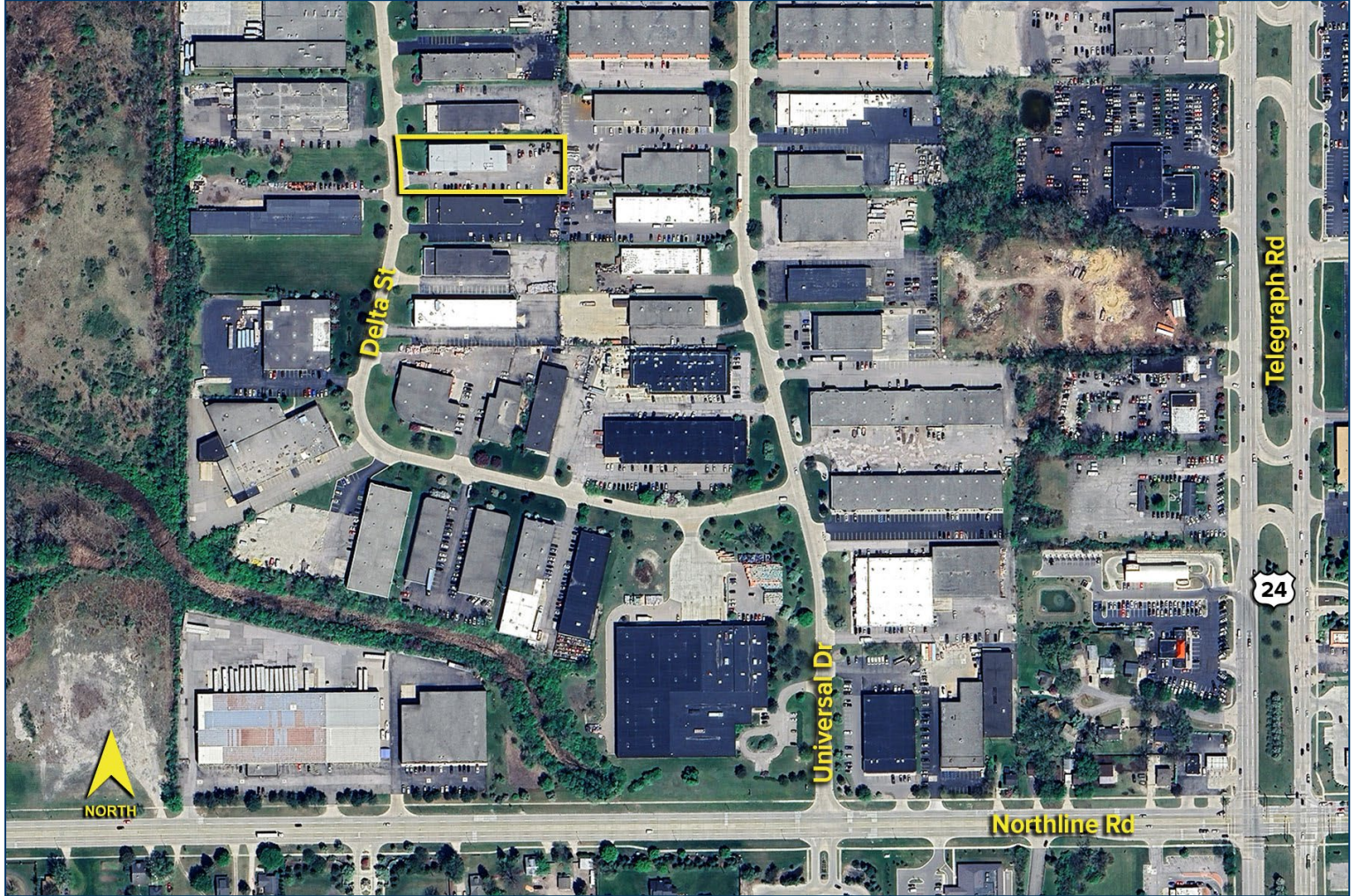
SIGNATURE ASSOCIATES
One Towne Square, Suite 1200
Southfield, MI 48076
www.signatureassociates.com

12395 Delta Street – Taylor, Michigan

Industrial For Lease

11,000
Square Feet
AVAILABLE

Aerial



For more information, please contact:

JUSTIN GAFFREY
(248) 799 3143
jgaffrey@signatureassociates.com

SIGNATURE ASSOCIATES
One Towne Square, Suite 1200
Southfield, MI 48076
www.signatureassociates.com