

FOR LEASE



1500 Valley River Dr



1600 Valley River Dr

1500 & 1600 VALLEY RIVER DRIVE - EUGENE, OR

VALLEY RIVER OFFICE PARK HIGHLIGHTS

- PREMIER OFFICE SPACE IN A PARK-LIKE SETTING
- SIZE OF SUITES AVAILABLE: 1,210 - 3,534 RSF
- GREAT AMENITIES BEING NEXT TO VALLEY RIVER CENTER
- AMPLE FREE PARKING
- EASY ACCESS TO HIGHWAYS AND DOWNTOWN EUGENE

AVAILABLE SUITES

Lease Rates: \$1.85/SF, Fully Serviced

1500 VALLEY RIVER DR:

- SUITE 140: 1,210 RSF
- SUITE 200: 3,534 RSF
- SUITE 240: 1,208 RSF

1600 VALLEY RIVER DR:

- SUITE 100: 2,811 RSF

For more information contact:

TIM CAMPBELL

timc@campbellre.com | (541) 484-2214

Licensed in the State of Oregon

BILL NEWLAND

bill@campbellre.com | (541) 484-2214

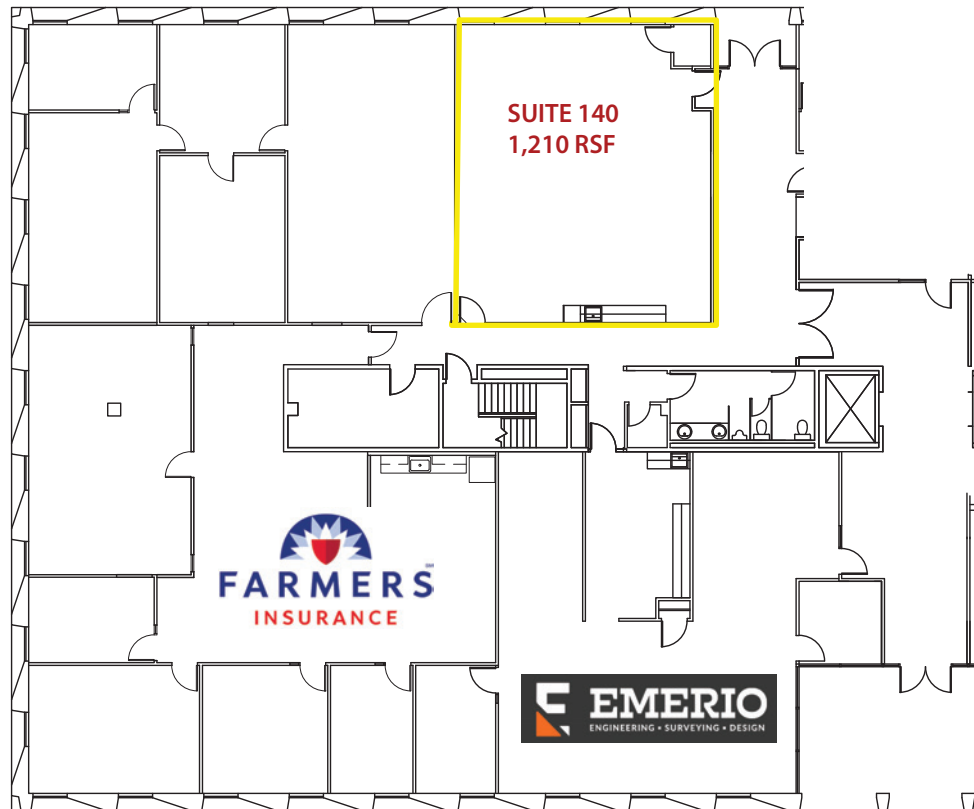
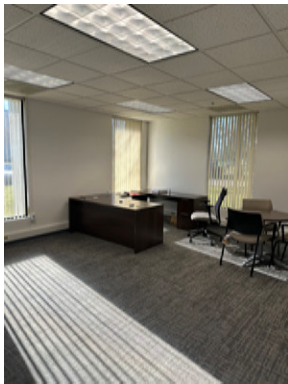
Licensed in the State of Oregon

Campbell
COMMERCIAL
REAL ESTATE

www.campbellre.com

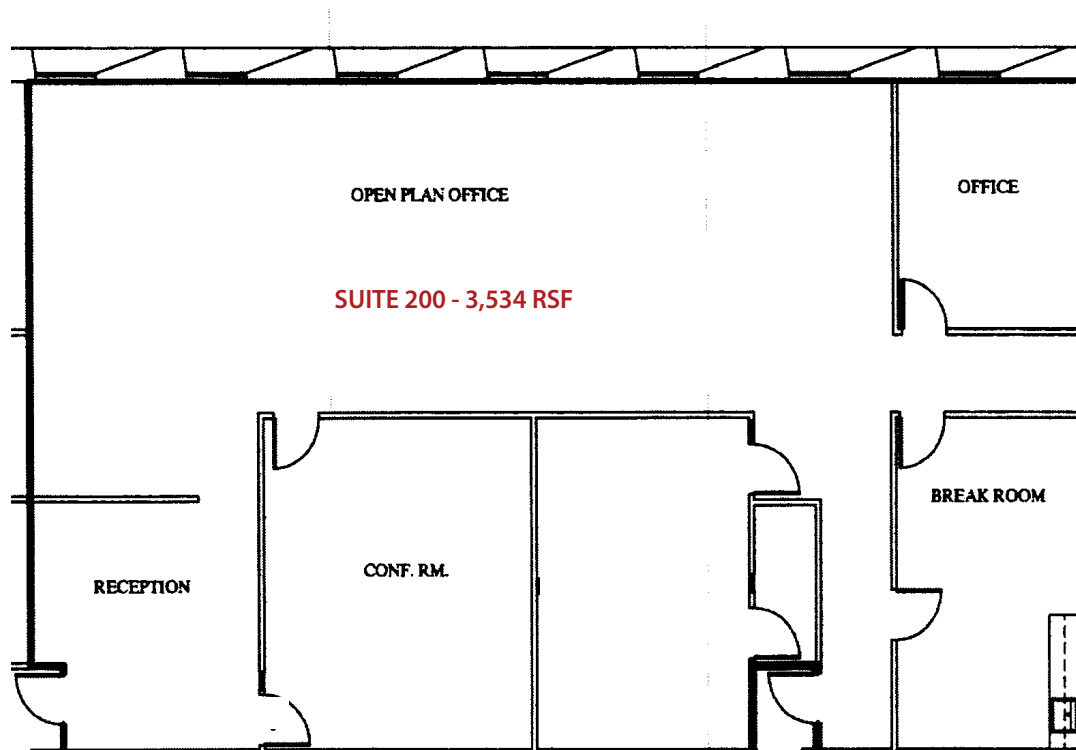
1500 VALLEY RIVER DRIVE

- Suite 140 - 1,210 RSF
- Brand new space with new carpet and furniture



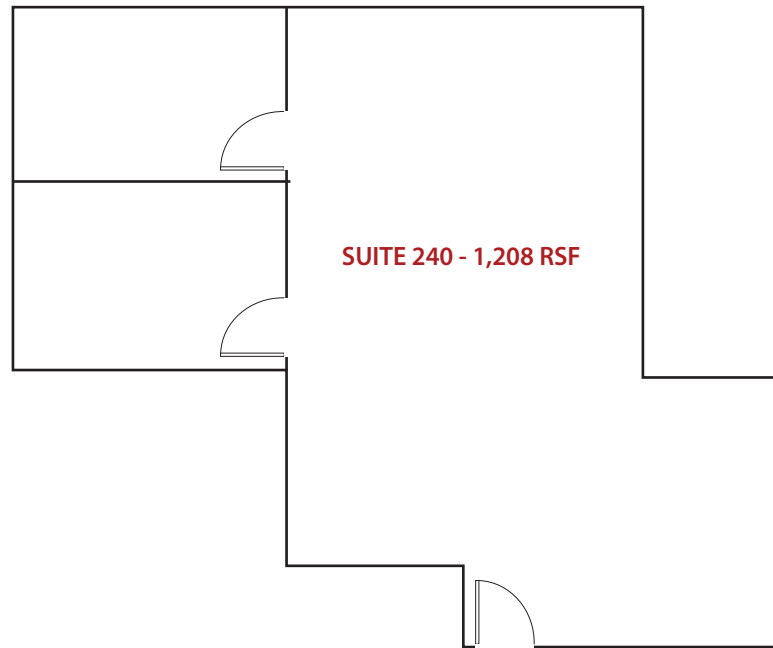
1500 VALLEY RIVER DRIVE

■ Suite 200 - 3,534 RSF



1500 VALLEY RIVER DRIVE

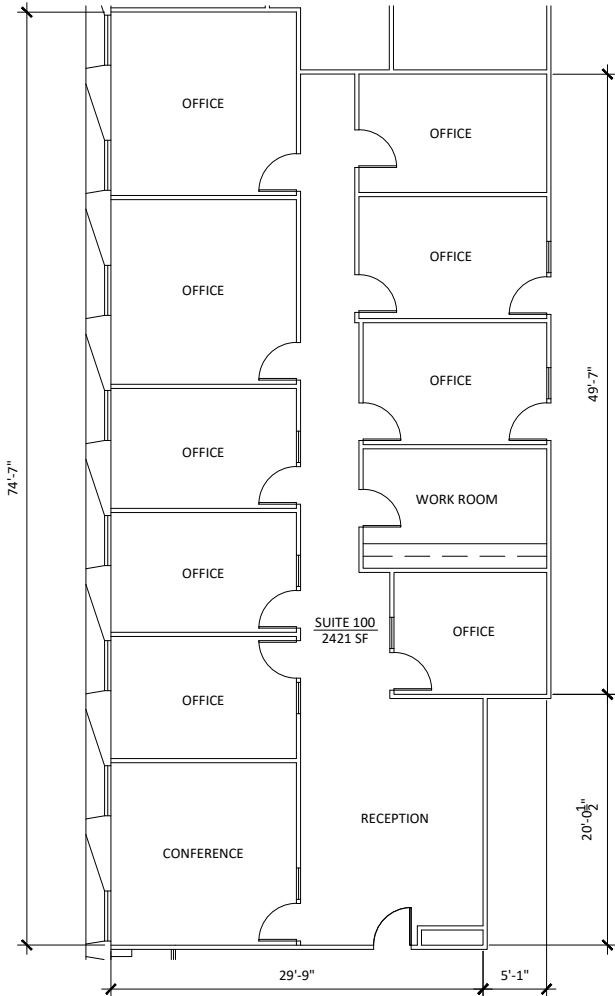
■ Suite 240 - 1,208 RSF*



The information in this package was obtained from sources deemed reliable, and is not guaranteed by agent. Package is subject to change, error or omission, prior sale or lease, correction or withdrawal. Any party contemplating purchase is urged to conduct their own independent study and inspection.

1600 VALLEY RIVER DRIVE

■ Suite 100 - 2,811 RSF



The information in this package was obtained from sources deemed reliable, and is not guaranteed by agent. Package is subject to change, error or omission, prior sale or lease, correction or withdrawal. Any party contemplating purchase is urged to conduct their own independent study and inspection.



AERIAL TENANT MAP

1500 & 1600 VALLEY RIVER DRIVE - EUGENE, OR



The information in this package was obtained from sources deemed reliable, and is not guaranteed by agent. Package is subject to change, error or omission, prior sale or lease, correction or withdrawal. Any party contemplating purchase is urged to conduct their own independent study and inspection.