



## Professional/Medical Office Building

NOW LEASING

103 Yost Blvd.  
Pittsburgh PA 15221

David Hanley • Broker • 412.261.6532 x237 • david@prudentialrealty.com  
Michael Damian • Commercial Brokerage • 412.261.6532 x253 • michael@prudentialrealty.com

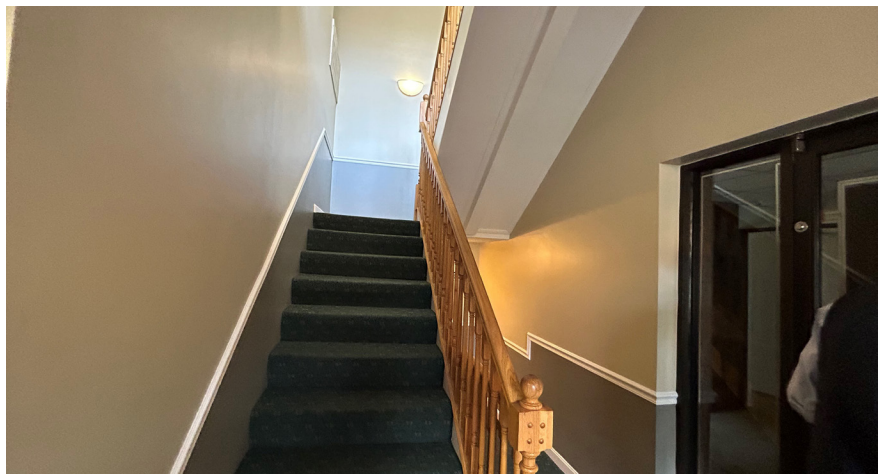
# PROPERTY HIGHLIGHTS

## TOTAL BUILDING SQUARE FOOTAGE:

10,000 Square Feet

## AVAILABLE SPACE:

- 1<sup>st</sup> Floor: Suite #100
- 2,000 rentable square feet
- 2<sup>nd</sup> Floor: Suite #200
- 2,000 rentable square feet
- 2<sup>nd</sup> Floor: Suite #201
- 2,000 rentable square feet
- **LEASE PRICE: Starting at**
- **\$12.00 psf (Plus Electric/janitorial)**



## AMENITIES:

Courtyard Area with picnic table

Building is professionally managed by ownership and has been updated

Located in the heart of the Forest Hills Business District and within minutes to many restaurants and shopping

Only minutes to Parkway East and PA Turnpike

All information furnished regarding this property for sale, rental, or financing is from sources deemed reliable but no warranty or representation is made as to the accuracy thereof and same is submitted subject to errors, omissions, change of price, rental or other conditions prior to sale, lease, financing or withdrawal without notice. PRC Commercial will make no representation and assume no obligation regarding the presence or absence of toxic or hazardous waste or substances or other undesirable material on or about the property that will ultimately be leased or purchased.

# LOCATION & DEMOGRAPHICS

DEMOGRAPHICS:	1 MILE	3 MILES	5 MILES
2024 Population	10,607	89,919	243,643
Median HH Income	\$53,633	\$47,853	\$51,821

