

1720

BURLINGAME, CA

MEDICAL OFFICE SPACE

±2,193 TO ±4,897 RSF AVAILABLE

EL CAMINO REAL



ANCHOR
HEALTH PROPERTIES

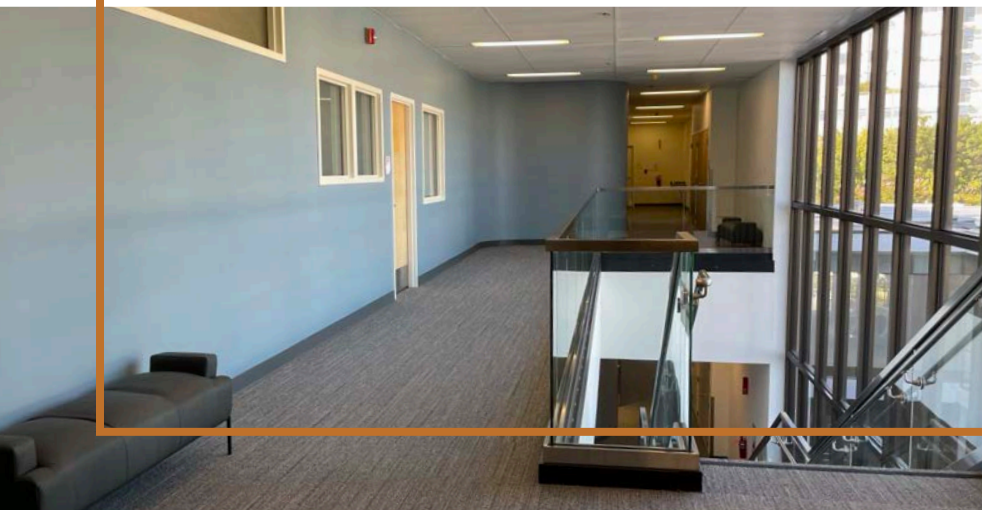
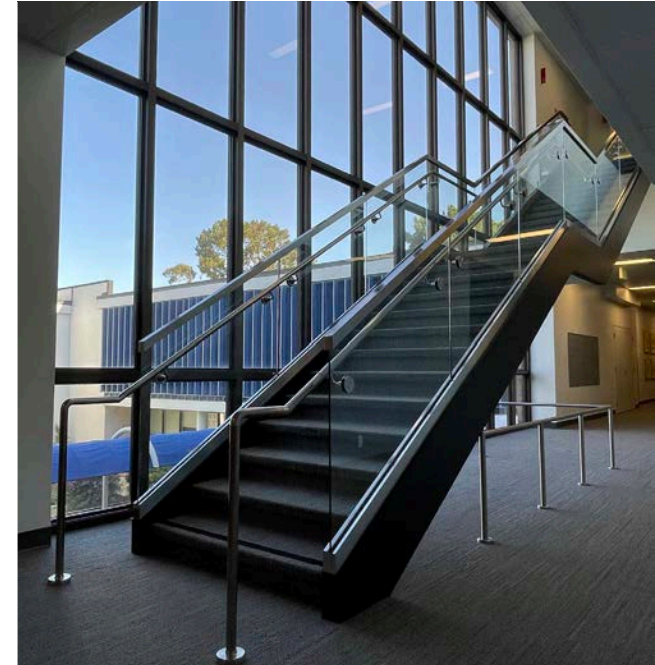
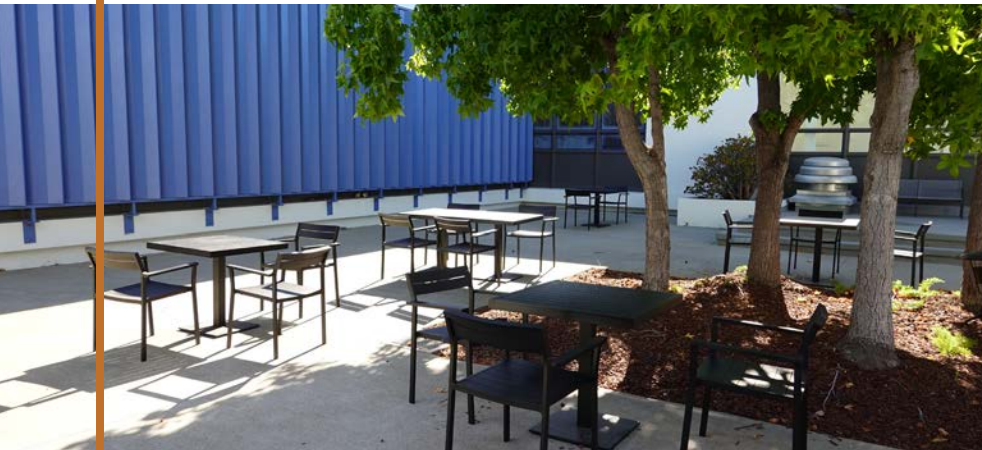
CBRE

1720

BURLINGAME, CA

EL CAMINO REAL

- Prime Medical Office Space
- Across from Mills-Peninsula Medical Center
- Close Proximity to Milbrae Bart and Caltrain Station
- Monument Signage Available
- Ample Free Parking for Staff and Patients
- Easy Access to I 280, Hwy 101, and SR 82



NEW IMPROVEMENTS

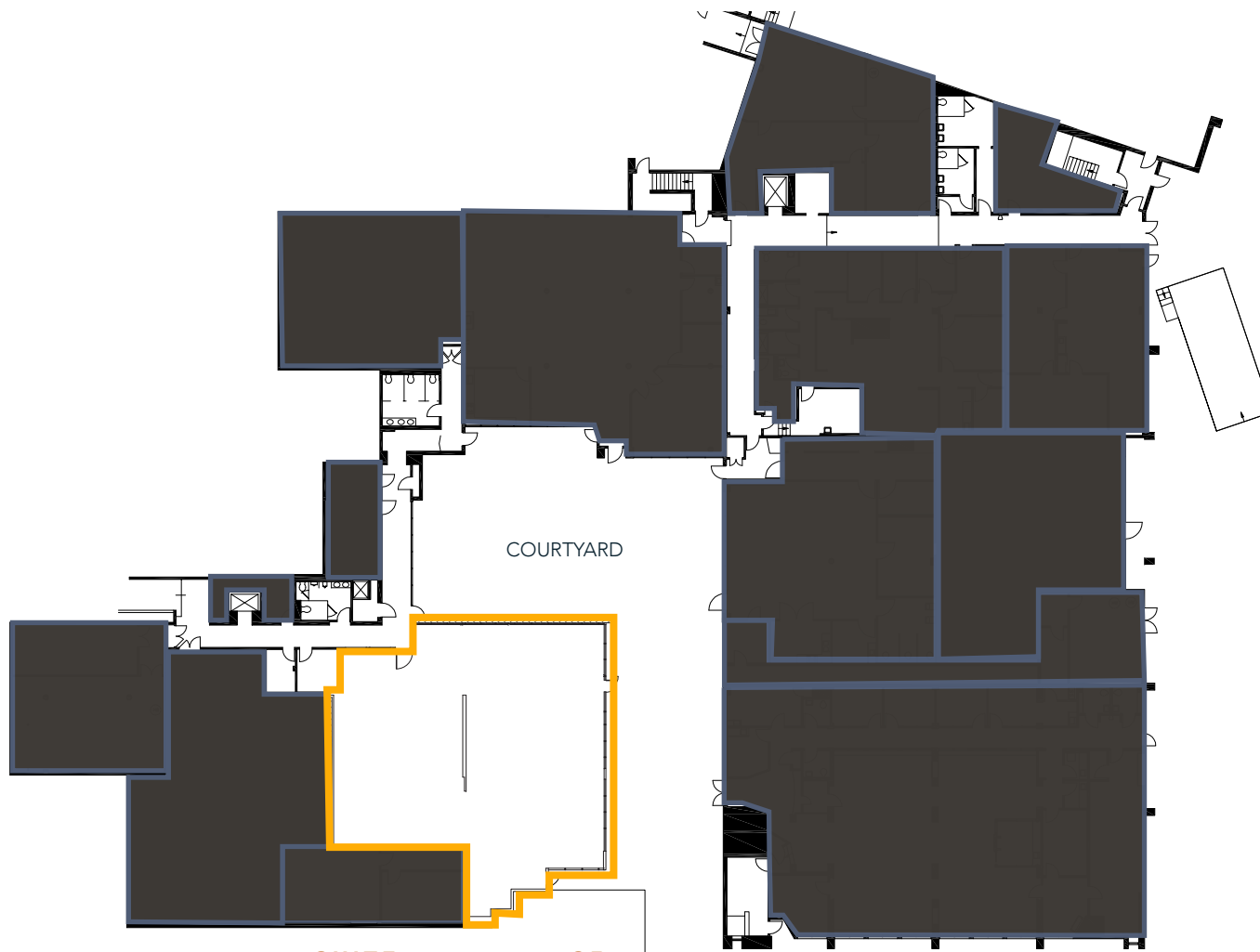
- Large Indoor/Outdoor Amenity Area
- New Exterior Entry and Lobby Area
- Upgraded Common Areas
- TI's Available

FLOOR PLANS

1720

BURLINGAME, CA

EL CAMINO REAL



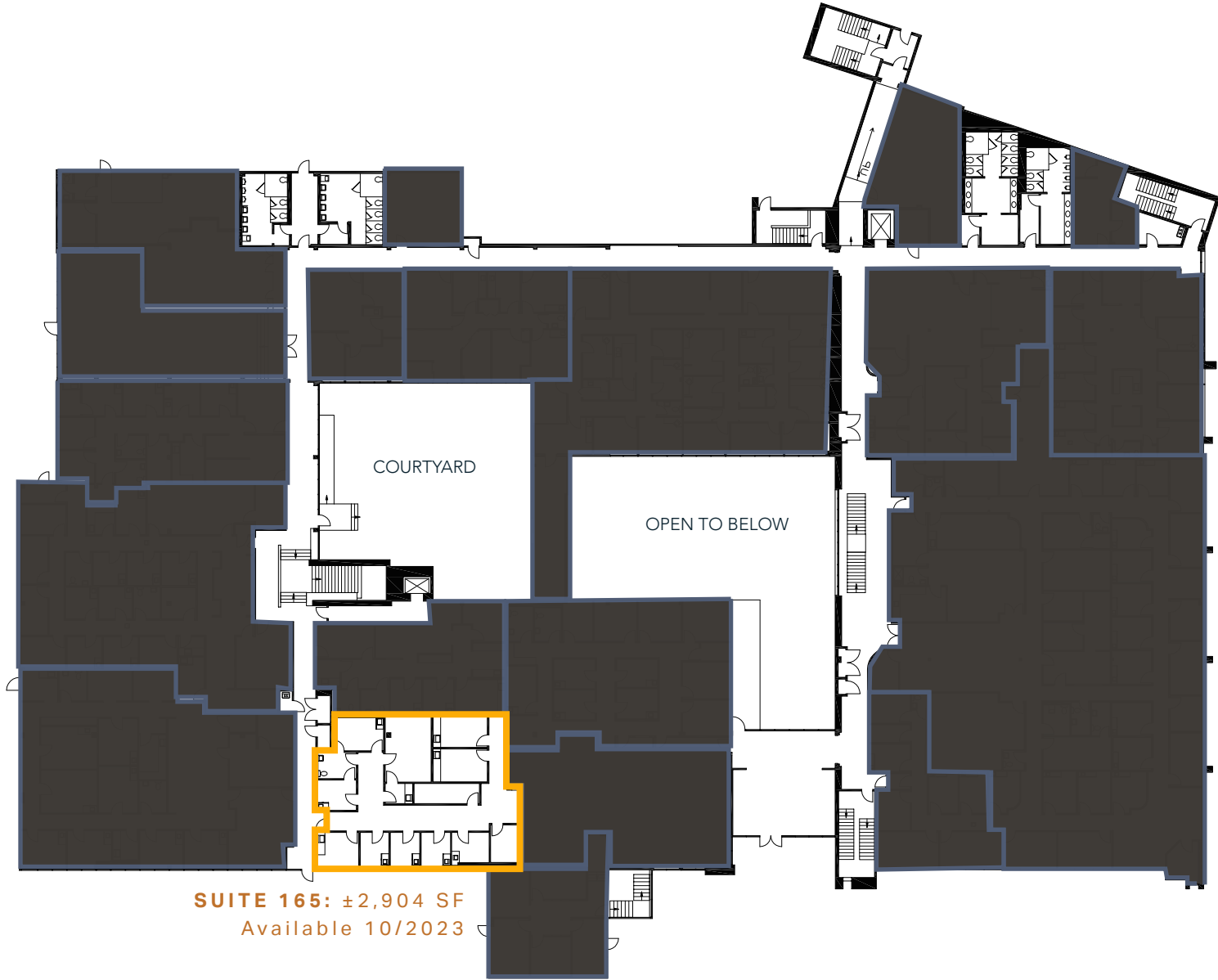
SUITE 10: ±4,897 SF
Available Now

FLOOR PLANS

1720

BURLINGAME, CA

EL CAMINO REAL



SUITE 165: ±2,904 SF
Available 10/2023

FLOOR PLANS

1720

BURLINGAME, CA

EL CAMINO REAL

SUITE 200: ±2,193 SF
Available 1/2024



SUITE 235: ±4,222 SF
Available Now

LOCAL AMENITIES

1720

BURLINGAME, CA

EL CAMINO REAL

- Across from Mills-Peninsula Medical Center
- Close Proximity to Millbrae Bart and Caltrain Station
- Easy Access to Hwy 101, I-280, and SR 82



1720

BURLINGAME, CA

EL CAMINO REAL

CONTACT INFORMATION

SIMON CLARK

Lic. 01318652

+1 650 577 2938

simon.clark@cbre.com

© 2023 CBRE, Inc. All rights reserved. This information has been obtained from sources believed reliable, but has not been verified for accuracy or completeness. You should conduct a careful, independent investigation of the property and verify all information. Any reliance on this information is solely at your own risk. CBRE and the CBRE logo are service marks of CBRE, Inc. All other marks displayed on this document are the property of their respective owners, and the use of such logos does not imply any affiliation with or endorsement of CBRE. Photos herein are the property of their respective owners. Use of these images without the express written consent of the owner is prohibited. PMStudio_August2021

