

Fieldstone Way

Vandalia, OH

Opportunity Highlights

- + Build to Suit
- + **Total SF:** 40,000-100,000 SF +/-
- + **Zoning:** O/IP Office/Industrial Park
- + Potential incentives available



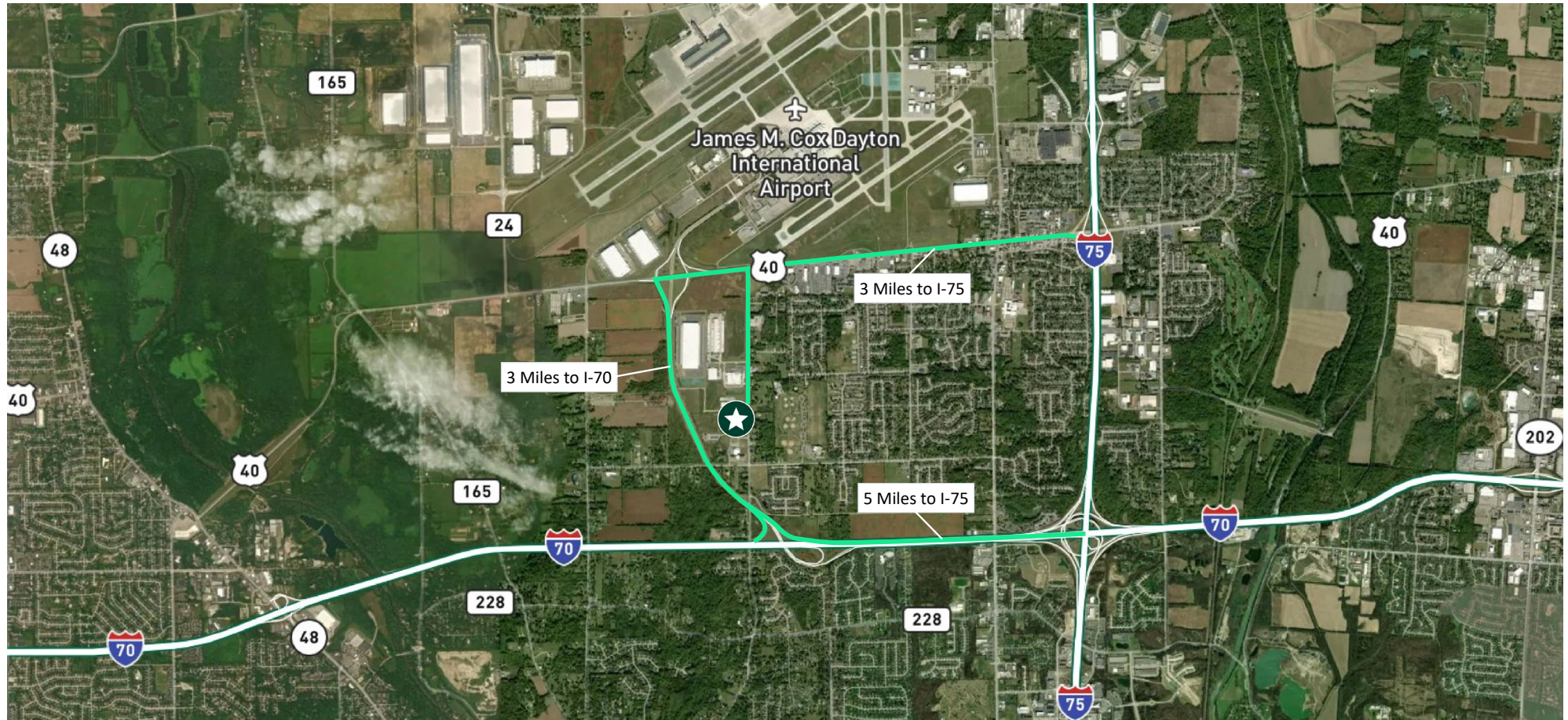
Contact Us

Beau Nimer, SIOR

First Vice President

+1 513 369 1335

beau.nimer@cbre.com



Contact Us

Beau Nimer, SIOR
First Vice President
+1 513 369 1335
beau.nimer@cbre.com

© 2025 CBRE, Inc. All rights reserved. This information has been obtained from sources believed reliable, but has not been verified for accuracy or completeness. You should conduct a careful, independent investigation of the property and verify all information. Any reliance on this information is solely at your own risk. CBRE and the CBRE logo are service marks of CBRE, Inc. All other marks displayed on this document are the property of their respective owners, and the use of such logos does not imply any affiliation with or endorsement of CBRE. Photos herein are the property of their respective owners. Use of these images without the express written consent of the owner is prohibited.