



## Suite #305

### Property Highlights

- Approximately 7,557 SF
- Through 5/31/31
- Furniture Available with office/open mix, including large café and two conference rooms.
- Convenient access to I-495, I-66 and the Dulles Toll Road.
- Shuttle to Spring Hill Metro and Tysons Galleria.
- Building amenities include American Prime Restaurant, OrangeTheory Fitness, jogging trails, pickleball/basketball courts, brand new fitness center and best in class conferencing facility/tenant lounge area.



### Contact

Michael Altman  
+1 703 770 3402  
michael.altman@cushwake.com

Todd Brinkman  
+1 703 770 3403  
todd.brinkman@cushwake.com

# Floor plan / Location Map

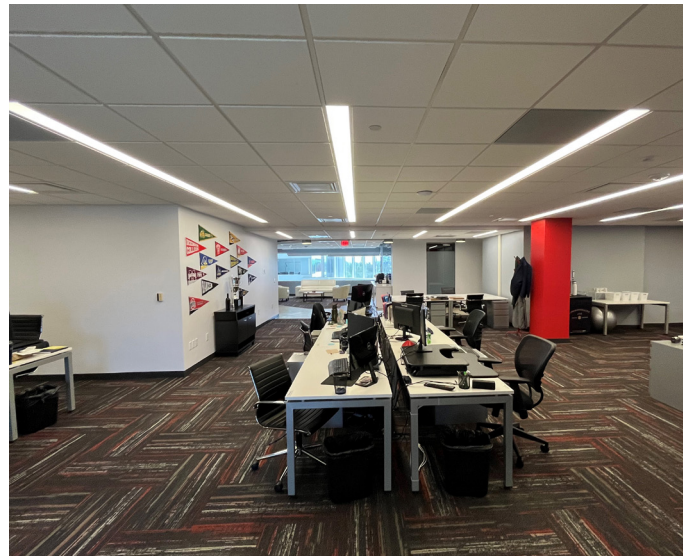
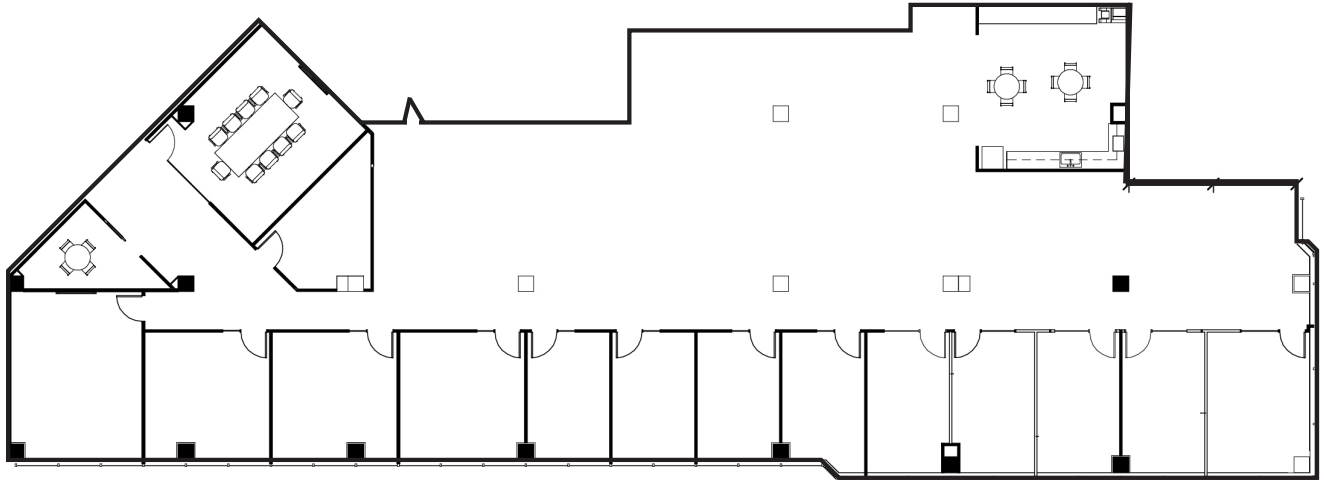
1410 Spring Hill Road | McLean, VA

#305 - Approximately 7,557 SF



**#305**

7,557 sf



## Contact

Michael Altman  
+1 703 770 3402  
michael.altman@cushwake.com

Todd Brinkman  
+1 703 770 3403  
todd.brinkman@cushwake.com