

# Newport Shopping Center

Waterfront Plaza, Newport VT

POMERLEAU  
REAL ESTATE



## AVAILABLE FOR LEASE:

**PLAZA SIZE:** 86,782 +/- SF

### SPACES FOR LEASE:

**Suite 3:** Up to 9,035 sf

**Suite 9:** Up to 7,255 sf

**PRICE:** \$10.00 sf NNN (\$3.31/sf)

Opportunity awaits in the historic and beautiful town of Newport, VT! Newport Plaza is conveniently located right off I91, in the heart of town. Less than 15 minutes from Canadian border, the plaza is heavily trafficked from both native and international tourists.

Current tenants include: Walgreens, Wendy's, Vista Foods, The Great Outdoors, Hoagies Pizza, The T Bar and more.



FOR MORE INFORMATION, CONTACT:

**Kendra Kenney**

**O: 802 863 8218 | M: 508 479 8761 | [kkenney@vermontrealestate.com](mailto:kkenney@vermontrealestate.com)**


[vermontrealestate.com](http://vermontrealestate.com)

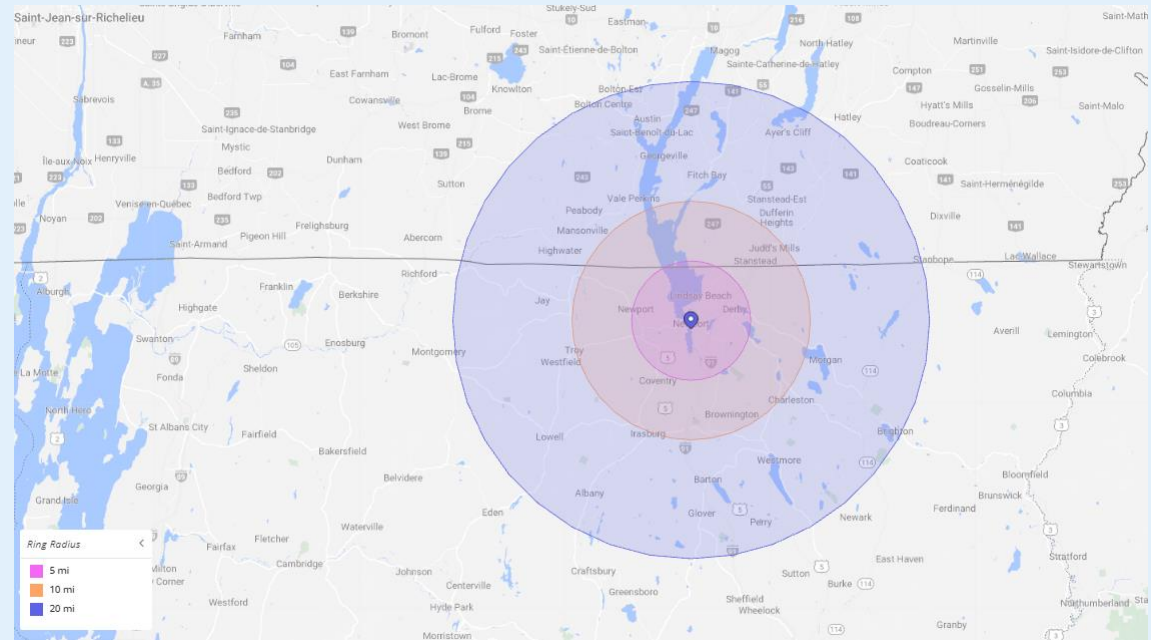
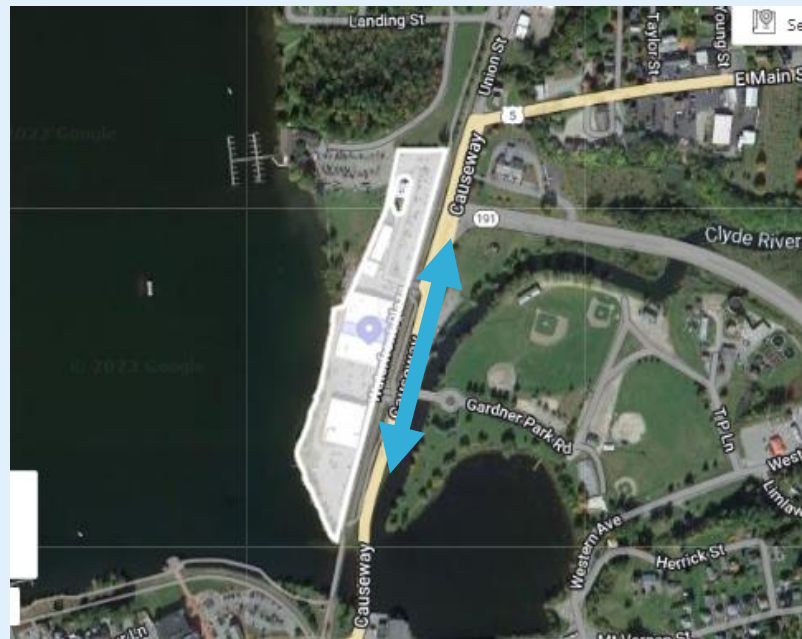
COMMERCIAL BROKERAGE | DEVELOPMENT | PROPERTY MANAGEMENT




# Newport Shopping Center

Waterfront Plaza, Newport VT

## AVAILABLE FOR LEASE:

Traffic Count	 = 9,114
Avg Weekly Visits	4,217



	 5 miles	 10 miles	 20 miles
Population	9,100	17,218	26,110
Households	3,799	7,267	11,210
Avg Household Income	\$61,945	\$57,861	\$57,676

\*Information provided by  Placer.ai



FOR MORE INFORMATION, CONTACT:

**Kendra Kenney**

O: 802 863 8218 | M: 508 479 8761 | [kkenney@vermontrealestate.com](mailto:kkenney@vermontrealestate.com)

[vermontrealestate.com](http://vermontrealestate.com)

COMMERCIAL BROKERAGE | DEVELOPMENT | PROPERTY MANAGEMENT

# Newport Shopping Plaza

Newport, Vermont

Photos:



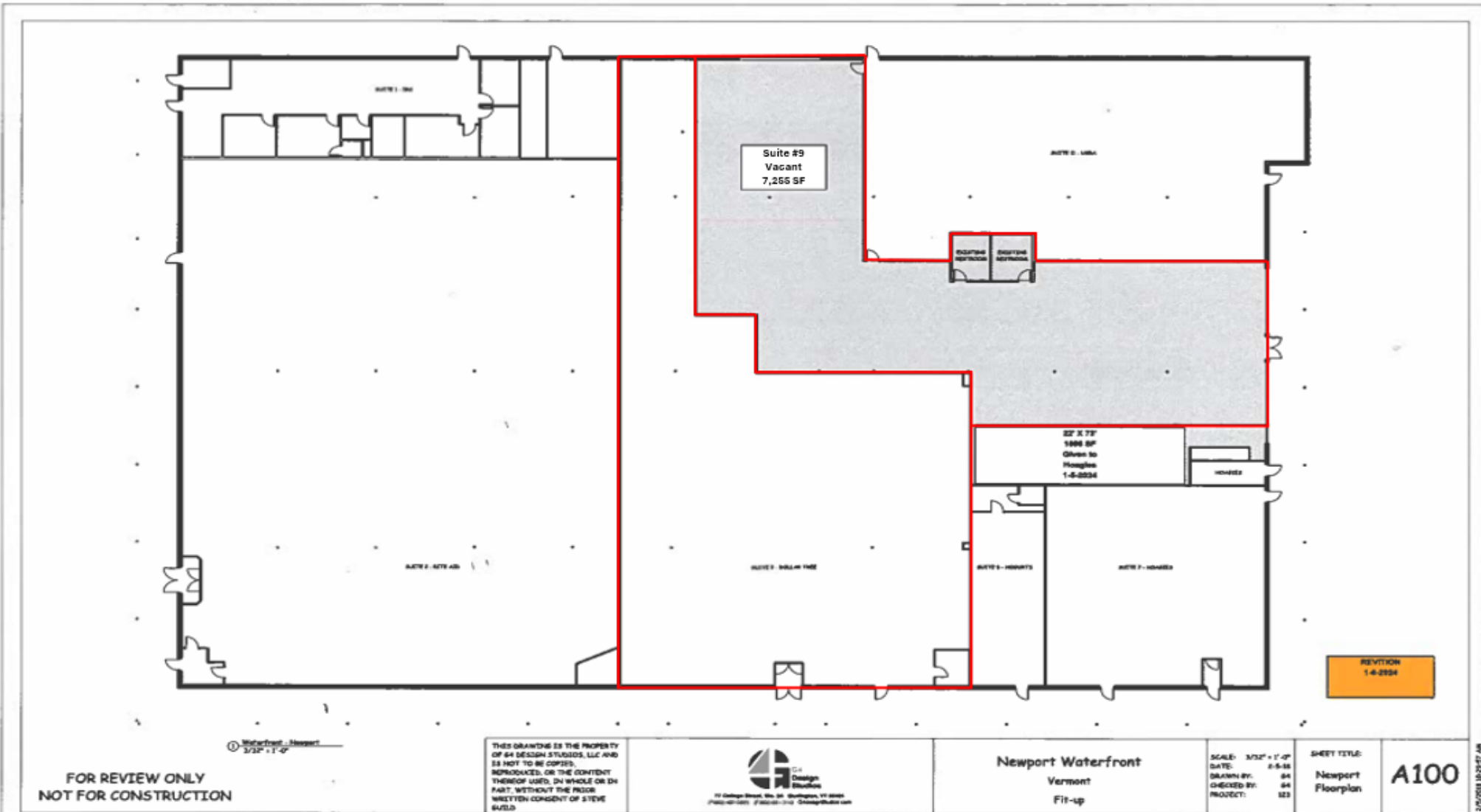
FOR MORE INFORMATION, CONTACT:

**Kendra Kenney**

**O: 802 863 8218 | M: 508 479 8761 | [kkenney@vermontrealestate.com](mailto:kkenney@vermontrealestate.com)**

[vermontrealestate.com](http://vermontrealestate.com)

COMMERCIAL BROKERAGE | DEVELOPMENT | PROPERTY MANAGEMENT



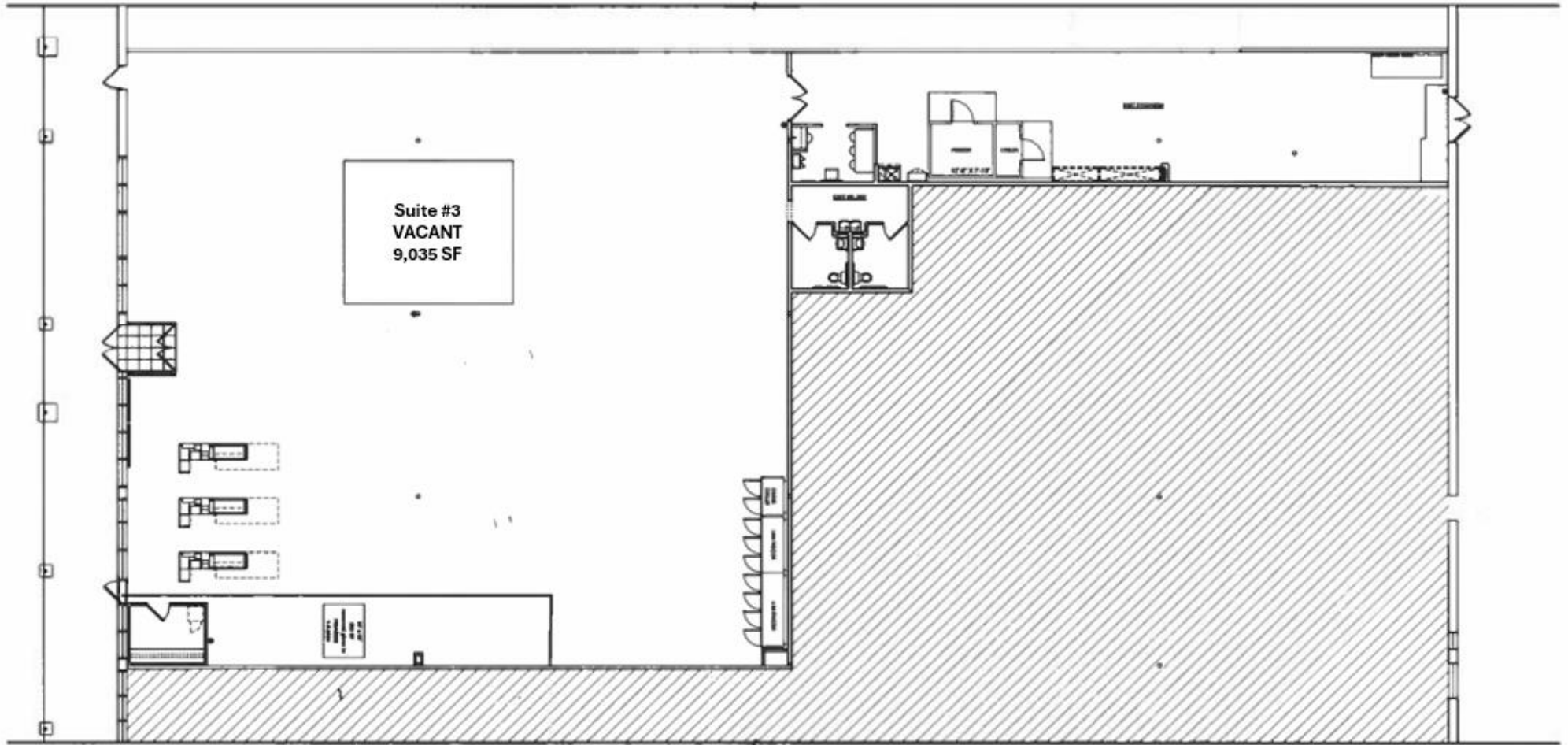
FOR MORE INFORMATION, CONTACT:

Kendra Kenney

O: 802 863 8218 | M: 508 479 8761 | kkenney@vermontrealestate.com

[vermontrealestate.com](http://vermontrealestate.com)

COMMERCIAL BROKERAGE | DEVELOPMENT | PROPERTY MANAGEMENT



FOR MORE INFORMATION, CONTACT:

Kendra Kenney

O: 802 863 8218 | M: 508 479 8761 | kkenney@vermontrealestate.com

[vermontrealestate.com](http://vermontrealestate.com)

COMMERCIAL BROKERAGE | DEVELOPMENT | PROPERTY MANAGEMENT