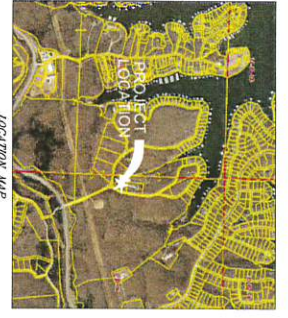
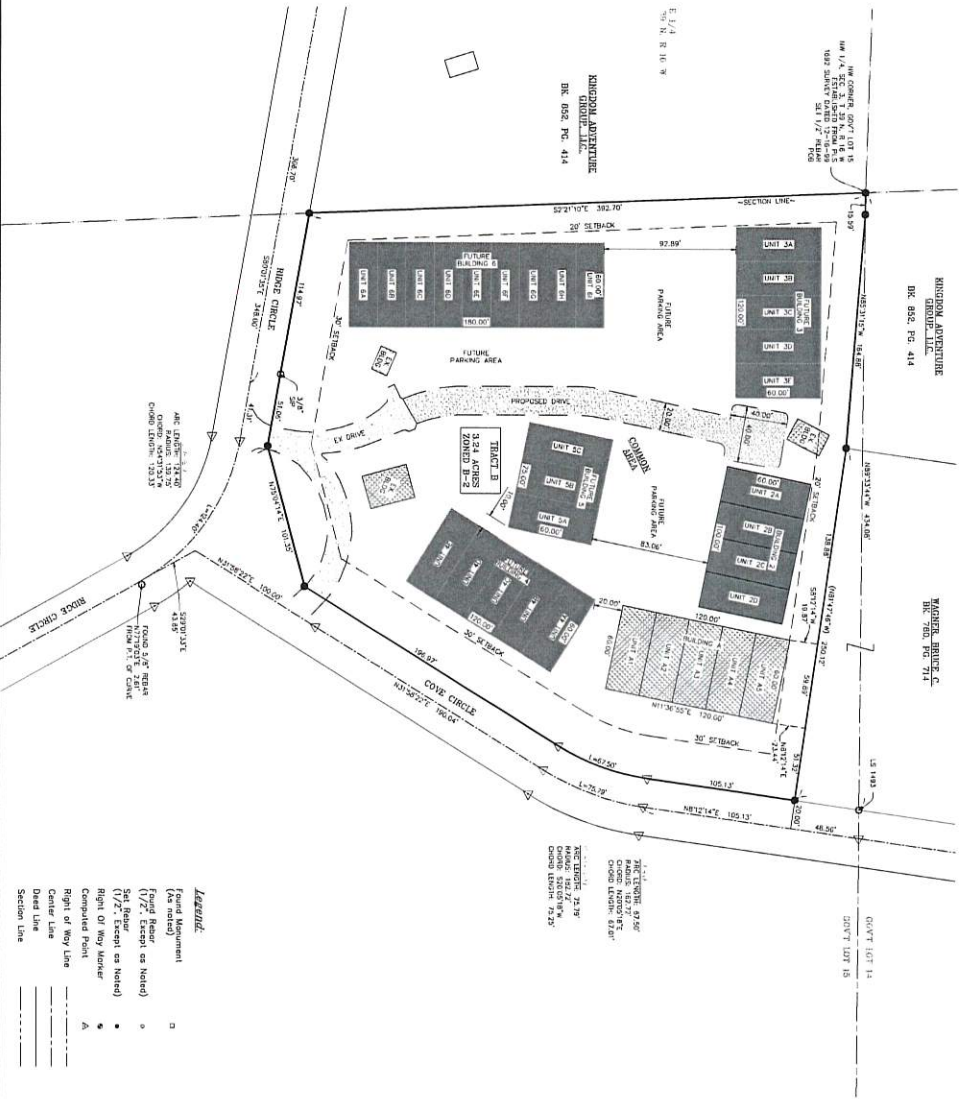


THE KINGDOM MANCAVES, FIRST ADDITION

SEC. 3 & 4, T39N, R16W CAMDEN CO., MISSOURI



LOCATION MAP



- Legend:**
- Found Monument
 - Found Rebar (1/2" Except as Noted)
 - Set Rebar (1/2" Except as Noted)
 - Right of Way Marker
 - △ Computer Point
 - ▲ Right of Way Line
 - Date Line
 - Section Line



- NOTES:**
1. This plat was prepared in accordance with the provisions of the Missouri State Plane Coordinate System, 1983.
 2. The Professional Land Surveyor has made no investigation or independent search for easement of record, title evidence or any other facts that on accurate and current documents of record of record that may affect the surveyed parcel.
 3. The survey was made and recorded in accordance with the provisions of the Missouri State Plane Coordinate System, 1983.
 4. Bearings are based on Missouri State Plane Coordinate System.
 5. Block and Page Numbers and Document Numbers refer to the Records of Camden County, MO.

<p>Owner: Kingdom Adventure Group, LLC 108 Roy Lane Wentzville, MO 63385</p>	<p>Board Member: Bob Wade</p>	<p>Survey Date: 02/22/2023</p>	<p>Scale: 1" = 40'</p>	<p>Sheet Number: 11523-22-S2</p>	<p>Page Number: 1 of 1</p>
---------------------------------------------------------------------------------------------	------------------------------------------	-------------------------------------------	-----------------------------------	---------------------------------------------	---------------------------------------

PRELIMINARY

SHORELINE SURVEYING & ENGINEERING
1508 Hwy. 52 Eldon, MO 65028
PH: (573) 392-3312