



COMMERCIAL • INDUSTRIAL • INVESTMENT

FOR LEASE

Retail/Office Space

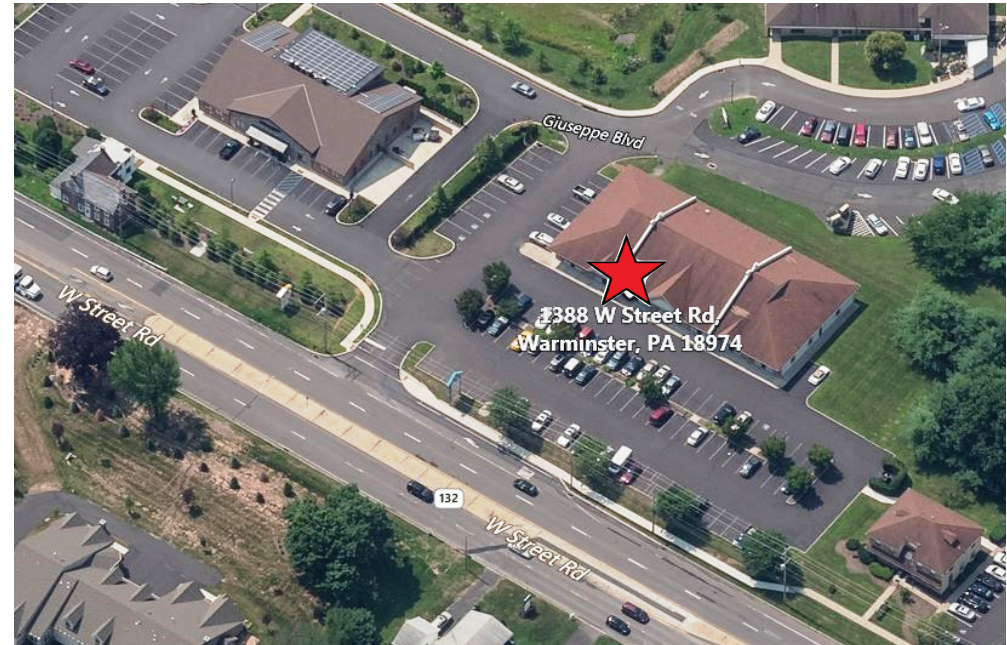
**1388 W. Street Road
Warminster, Bucks County, PA**



PRESENTED BY: Kurt Eisenschmid — Penn's Grant Realty Corporation
2005 S Easton Rd, STE 306, Doylestown, PA • 215-489-3800 x3 • Kurt@pgrealty.com • www.pgrealty.com

PROPERTY SPECIFICATIONS

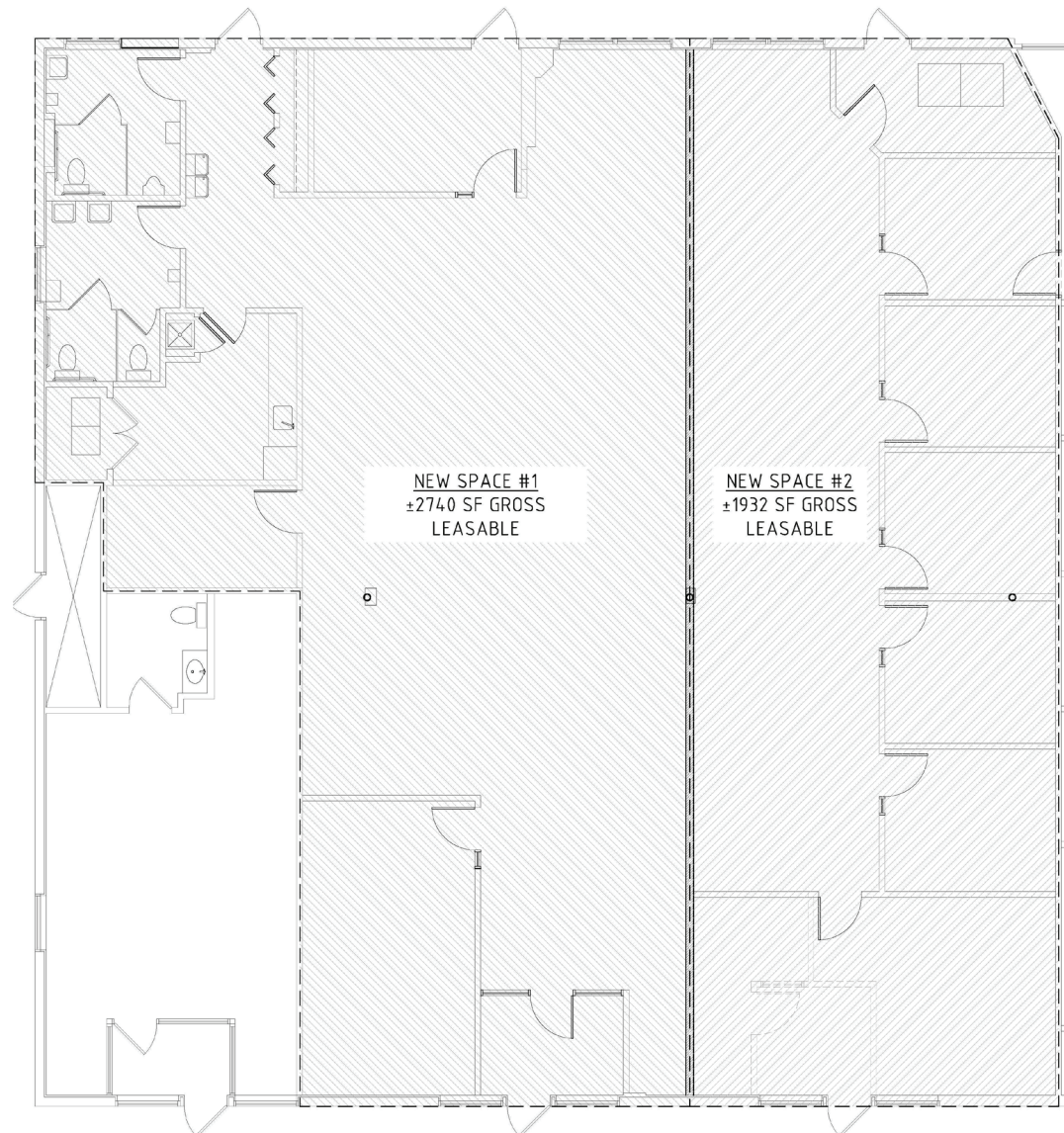
Space Available: 4,672± SF (can be subdivided to 1,932± SF)
Parking: Front door parking
Water: Public
Sewer: Public
Municipality: Warminster Township
Zoning: C-1 Commercial District
Lease Price: \$20 PSF, plus utilities and interior cleaning



C-1 Commercial District Zoning Uses

- Lawn and garden center
- Place of worship
- Public or private school
- Library or museum
- Private club or lodge
- Community center
- Adult day care
- Medical or Dental Office/Clinic
- Business or professional office
- Retail shop
- Service business
- Bank
- Restaurant
- Indoor Commercial Entertainment
- Veterinary office
- Trade or Professional School
- Banquet/catering facility
- Limited personal service
- Equipment Rental or Motor vehicle leasing





Floor Plan 1,932± - 4,672± SF

