

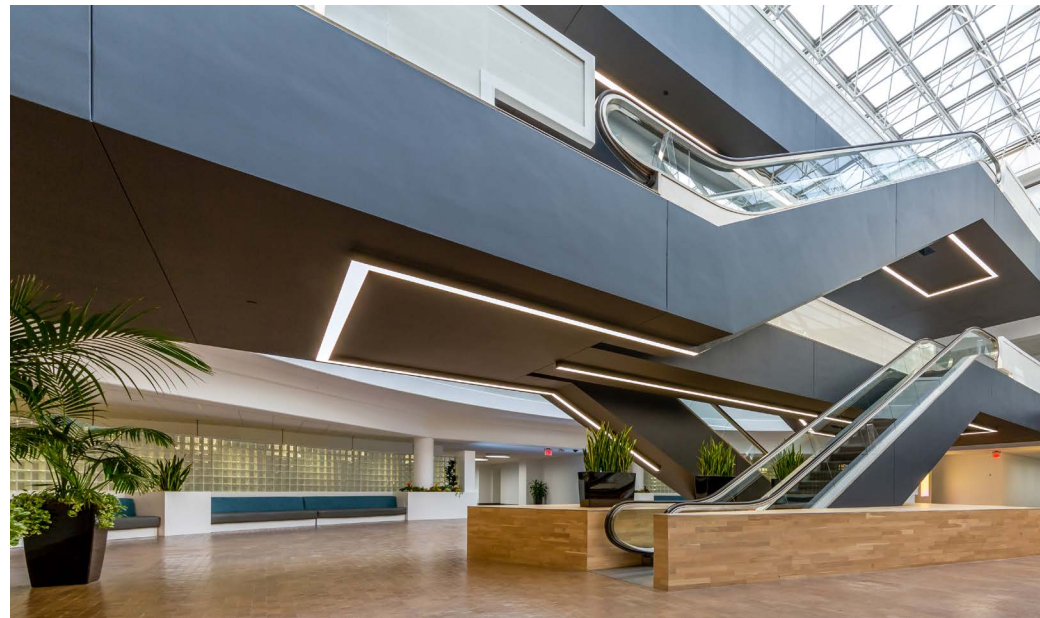
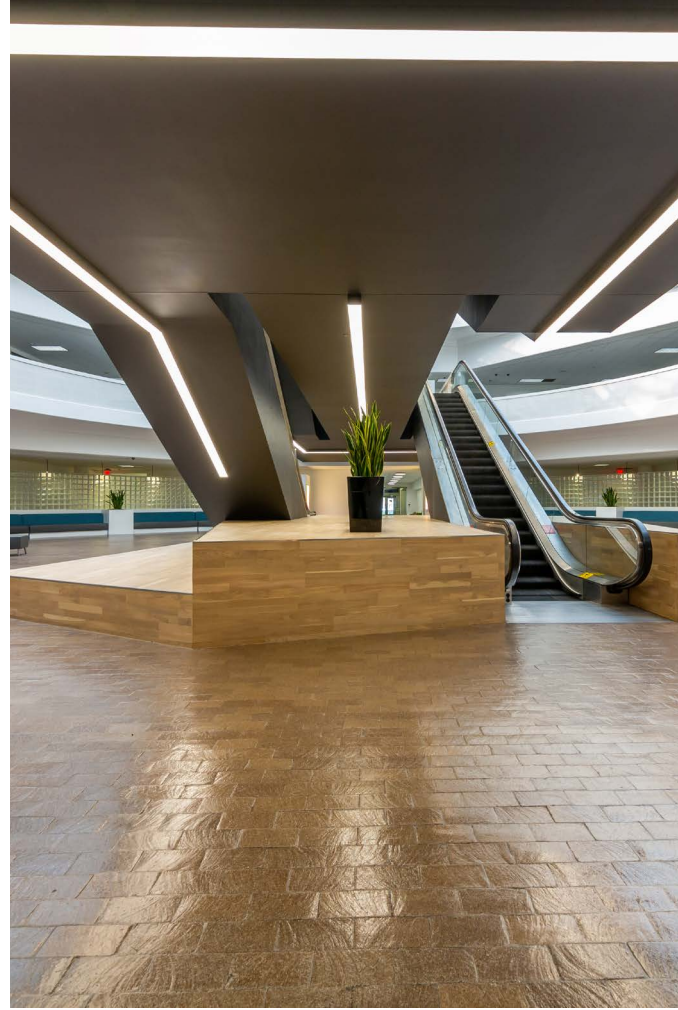


# HOUSTON TECHNOLOGY CENTER

OVER 300K SF AVAILABLE

5959 CORPORATE DR

PLUG & PLAY OFFICE





# WELCOME

## TO 5959 CORPORATE

**OVER 300,000 CONTIGUOUS SF AVAILABLE ACROSS 3 FLOORS**  
**PLUG & PLAY OFFICE SPACE AVAILABLE**  
**FULL FIBER & POWER REDUNDANCY WITH BACKUP GENERATION**

567,333 RSF Office in SW Beltway 8 Submarket

Move-in ready suites

Wireless common areas & activated lobby

Furniture in place in select suites

Fitness center

Conference facility

Deli space

Controlled access

Outdoor tenant areas

Up to 5/1000 secured parking

Signage opportunities available

24/7 on-site building and surface parking security

Convenient access to restaurants and retail in area

Quick access to Beltway 8 and Westpark Tollway



# LOCATION



## Dining:

85° Bakery Café  
Café 101  
Chick-Fil-A  
Denny's  
Kim Son  
Tiger Den  
Golden Dim Sum  
Banana Leaf  
Cheddar's  
Mala Sichuan Bistro  
Starbucks  
Tejas Taco House  
Benihana  
Chili's  
Jason's Deli  
la Madeleine  
Outback Steakhouse  
Red Robin  
Salata  
Torchy's Tacos  
Zoe's Kitchen

## Conveniences:

10+ nearby bus stops  
Gessner Park & Ride  
Westchase Park & Ride

## Hospitality:

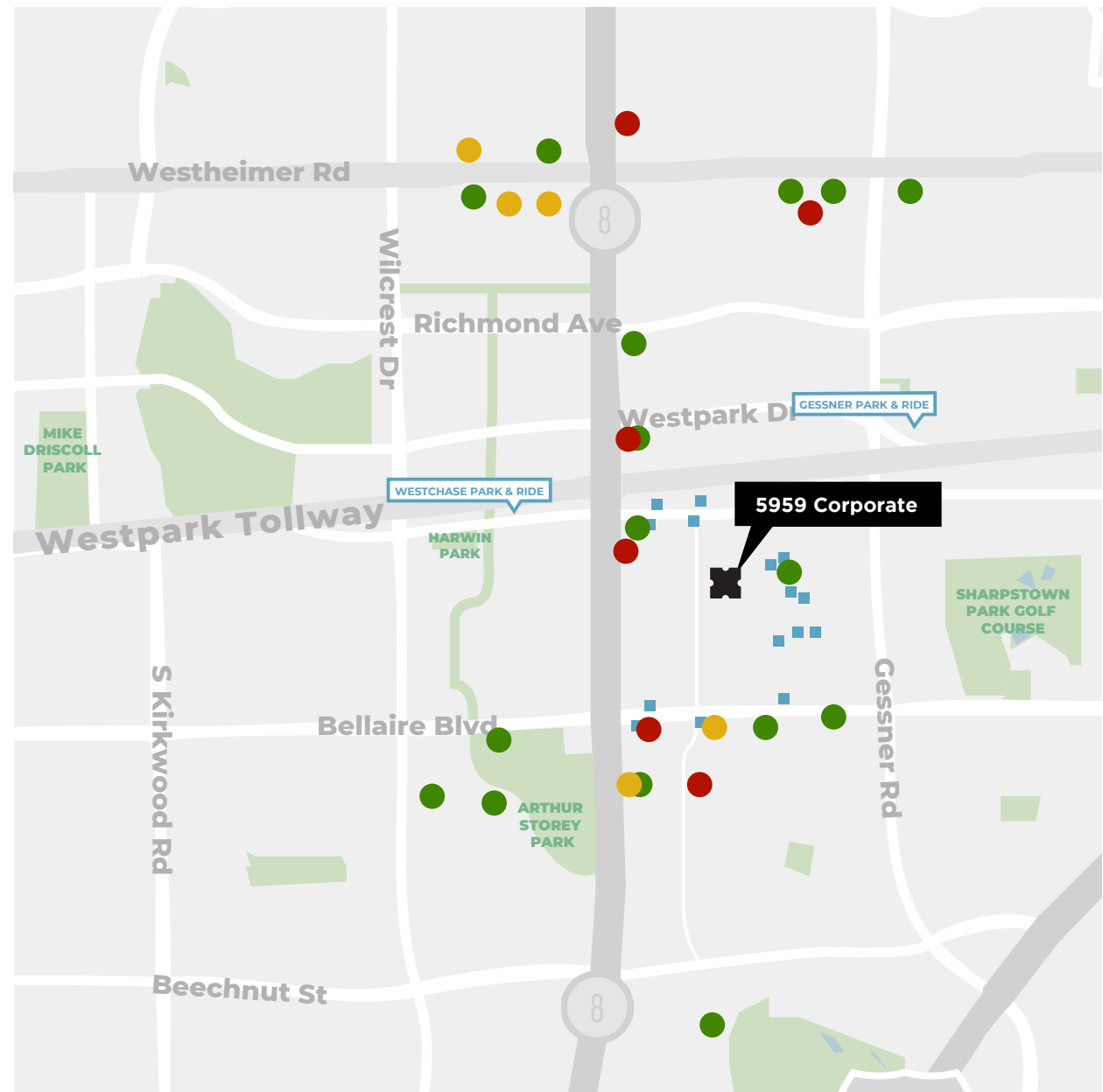
Hampton Inn & Suites  
Hilton Garden Inn  
Holiday Inn  
La Quinta Inn & Suites  
SpringHill Suites  
Fairfield Inn & Suites  
Houston Marriott  
Westchase

## Outdoors & Fitness:

Sharpstown Park Golf Course  
Arthur Storey Park  
Brays Bayou  
Greenway Trail  
Harwin Park  
Westchase District Trail  
Mike Driscoll Park  
24 Hour Fitness

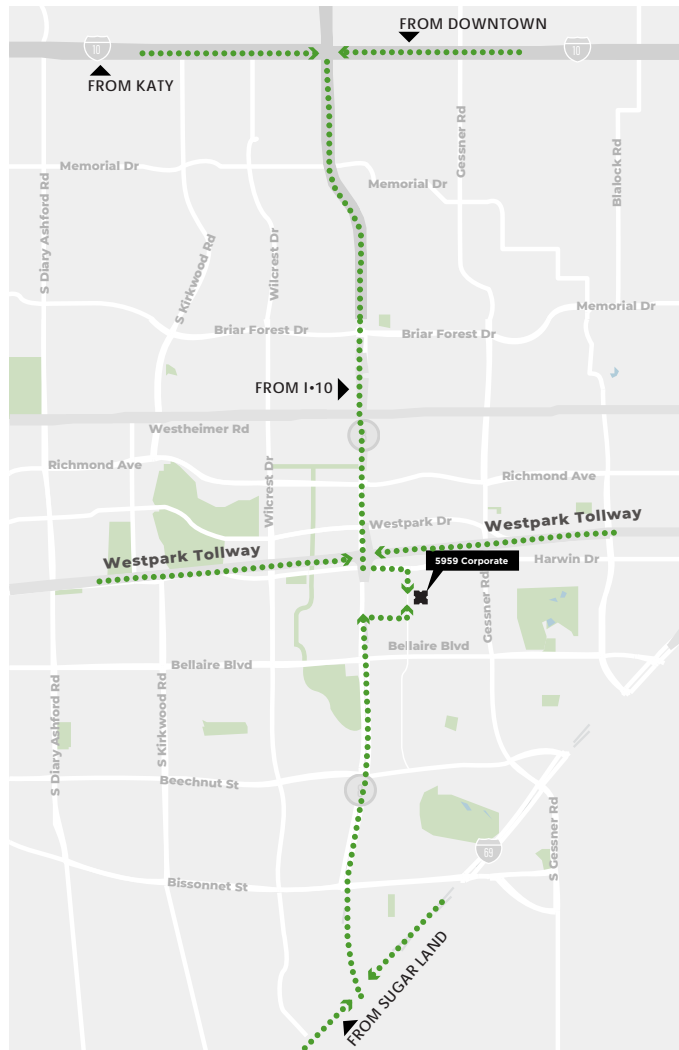
## Retail:

Target  
Whole Foods  
H-E-B  
H Mart  
Home Depot

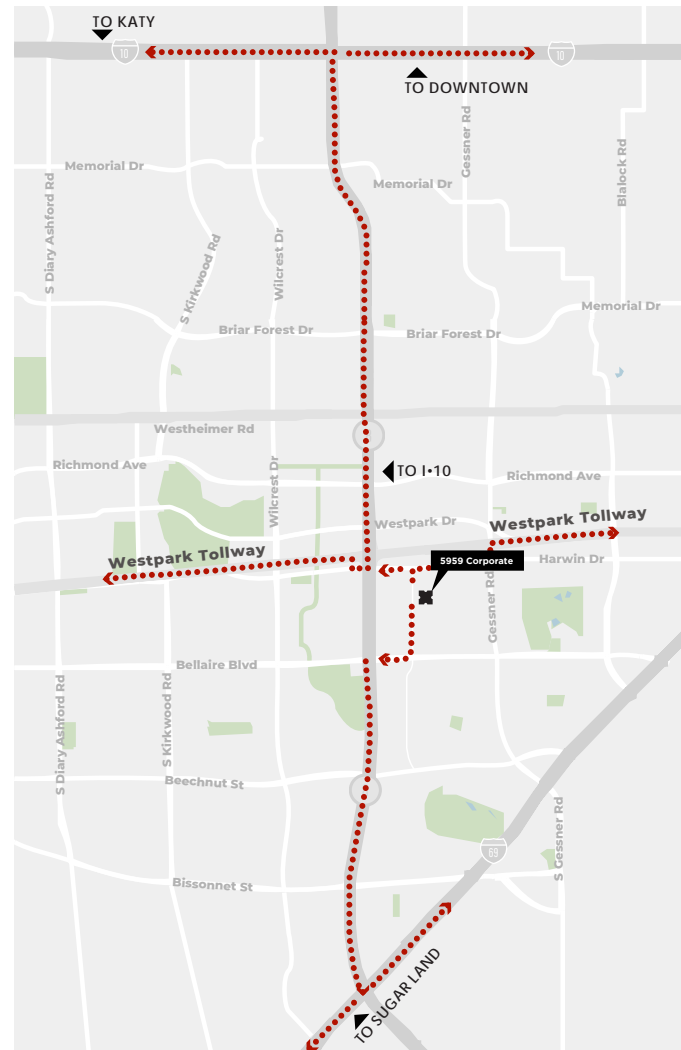


# ACCESS

## INGRESS



## EGRESS



# PROXIMITY



**DOWNTOWN**

13 miles

**GALLERIA**

6.5 miles

**TX MEDICAL CENTER**

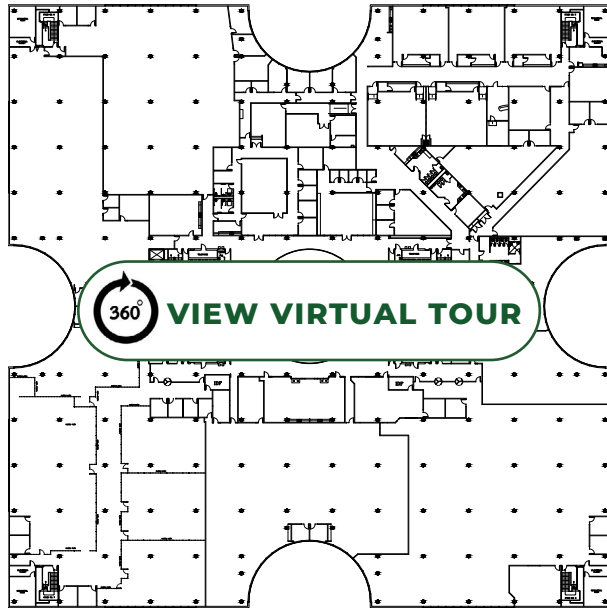
14 miles



**WESTPARK TOLLWAY**

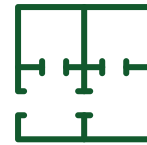


# FLOOR PLATE

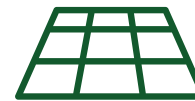


FULL PLUG & PLAY FLOOR AVAILABLE

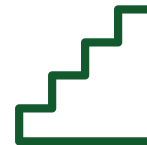
**2nd Floor**  
153,273 RSF



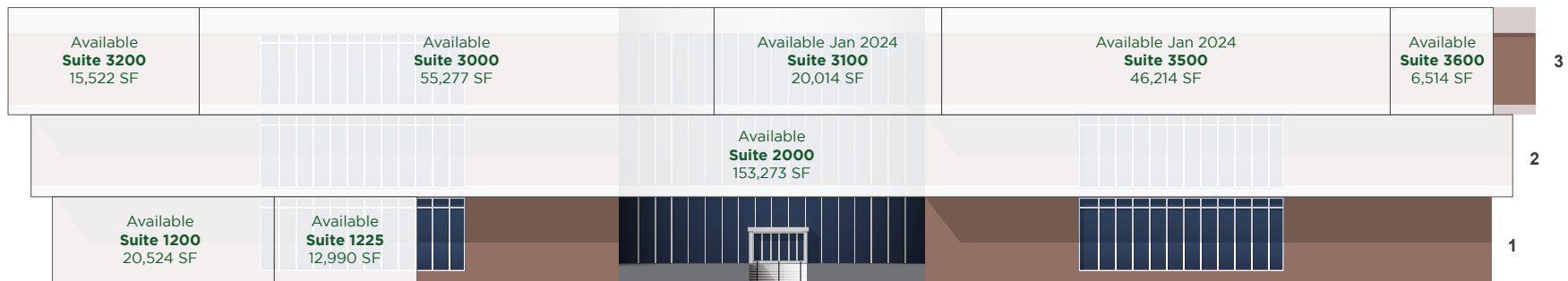
**2,600-330,000 SF**  
Office Space Availabilities



**140,000 SF**  
Typical Floor Size



**4**  
Stories





**5959 Corporate Dr  
Houston, TX 77036**

**FOR LEASING INFORMATION:**

**MICHELLE WOGAN**

michelle.wogan@transwestern.com  
713.270.3348

**PAULA MUSA**

paula.musa@transwestern.com  
713.231.1630

**AUDREY SCHULZ**

audrey.schulz@transwestern.com  
281.810.6194