

# FOR LEASE



## Office/Warehouse for Lease

3704 N Nevada Spokane, WA

### Property Size:

3,000 SF 1st floor warehouse

3,000 SF 2nd floor office

### Lease Rate:

\$6/SF/YR/MG (warehouse)

\$9/SF/YR/MG (office)

### Building Features

- 10' x 8' overhead door access to warehouse
- Parking available across the street
- Location offers unique ease of access to north side, South Hill, downtown, and Spokane Valley



Office space leased here helps support Hutton Settlement Childrens' Home, a historic not-for-profit organization dedicated to providing a safe and loving home for children.  
[www.huttonsettlement.org](http://www.huttonsettlement.org)

**Craig Soehren, Broker** | 509.755.7548 or [craigs@kiemleahagood.com](mailto:craigs@kiemleahagood.com)

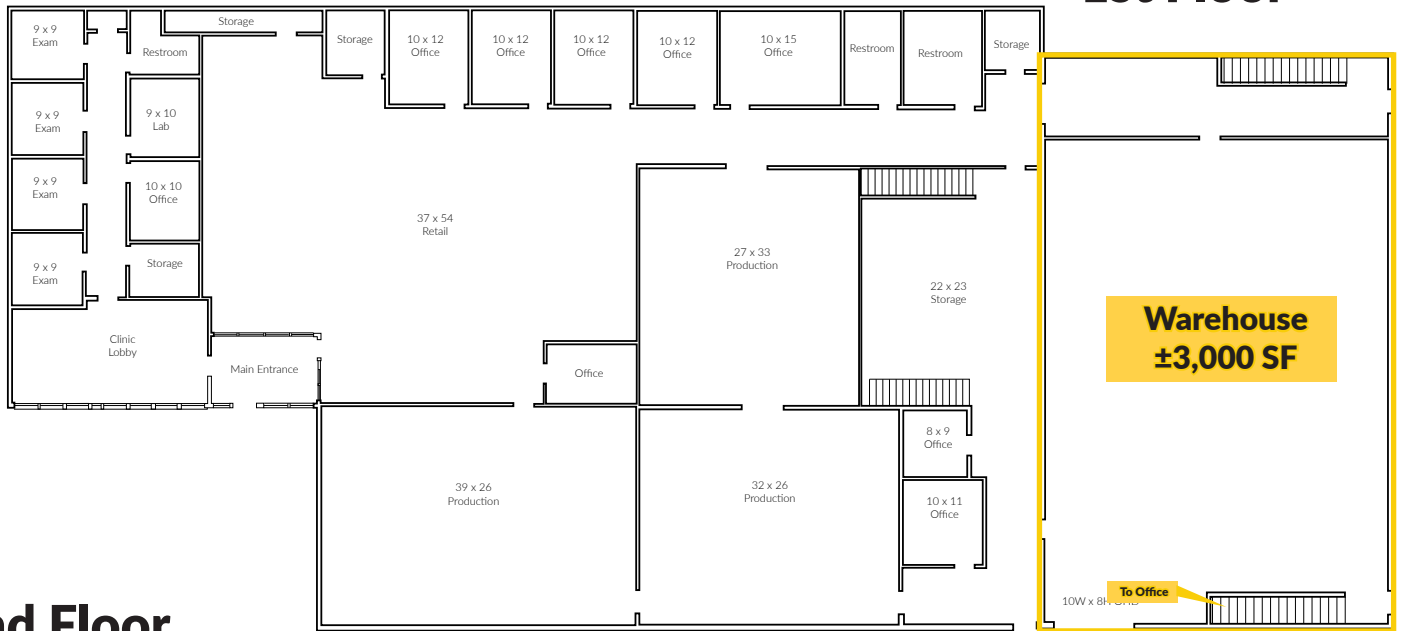
No warranty or representation, expressed or implied, is made by Kiemle Hagood, its agents or its employees as to the accuracy of the information contained herein. All information furnished is from sources deemed reliable and submitted subject to errors, omissions, change of terms and conditions, prior sale, lease or financing, or withdrawal without notice. No one should rely solely on the above information, but instead should conduct their own investigation to independently satisfy themselves.

509.838.6541  
601 W. Main Avenue, Suite 400  
Spokane, WA 99201  
[KIEMLEHAGOOD.COM](http://KIEMLEHAGOOD.COM)

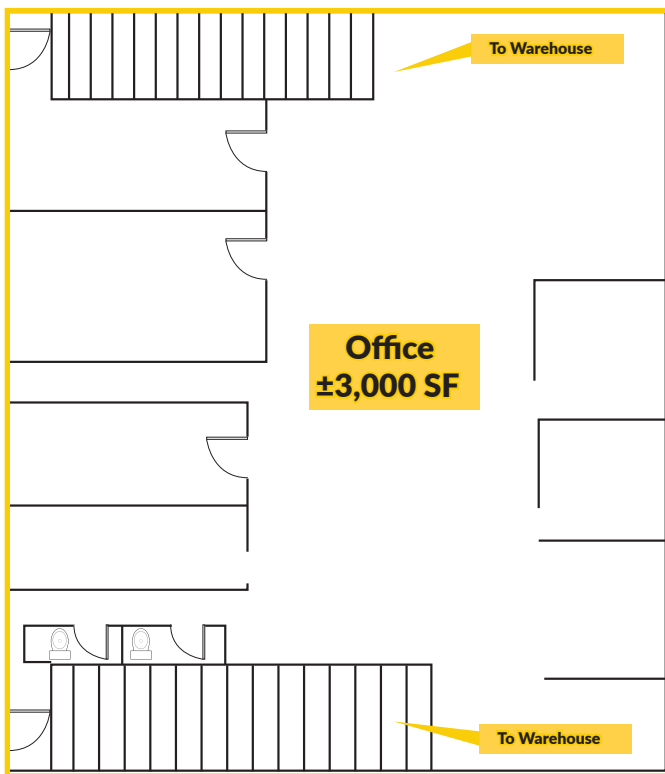


# Floor Plan

## 1st Floor



## 2nd Floor



**Office/Warehouse for Lease** | 3704 N Nevada Spokane, WA

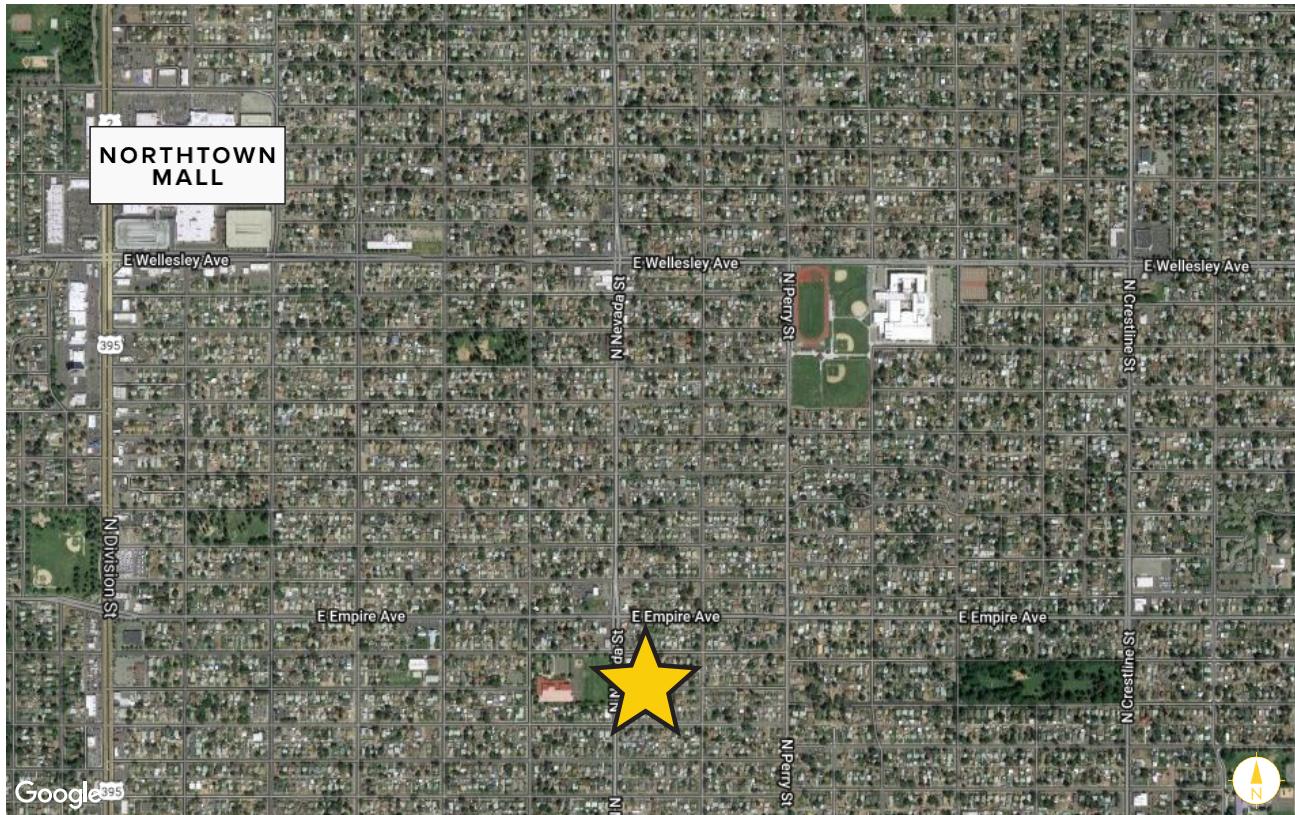
**Craig Soehren, Broker** | 509.755.7548 or [craigs@kiemlehagood.com](mailto:craigs@kiemlehagood.com)



Kiemle Hagood respects the intellectual property of others:  
If you believe the copyright in your work has been violated through this Website, please contact our office for notice of claims of copyright infringement. For your complaint to be valid under the Digital Millennium Copyright Act of 1998 (DMCA), you must provide the following information when providing notice of the claimed copyright infringement: Identify the material on the Website that you believe infringes your work, with enough detail so that we may locate it on the Website; provide your address, telephone number and email address; provide a statement that you have a good faith belief that the disputed use is not authorized by the copyright owner, its agent, or the law; provide a statement that the information in the notification is accurate, and under penalty of perjury, that the complaining party is authorized to act on behalf of owner of an exclusive right that is allegedly infringed; provide your physical or electronic signature. Upon receiving your complaint, Kiemle Hagood will, upon review, remove content that you believe infringes your copyright if the complaint is found valid.



# Aerial View



**Office/Warehouse for Lease** | 3704 N Nevada Spokane, WA

**Craig Soehren** | 509.755.7548 or [craigs@kiemlehagood.com](mailto:craigs@kiemlehagood.com)

509.838.6541  
601 W. Main Avenue, Suite 400  
Spokane, WA 99201  
[KIEMLEHAGOOD.COM](http://KIEMLEHAGOOD.COM)



**KIEMLE  
HAGOOD**