

FOR LEASE

VOLUSIA MARKETPLACE

2400 W International Speedway Boulevard, Daytona Beach, FL32114

COMING SOON!



±1,800 SF INLINE SPACE & ±50,075 SF ENDCAP AVAILABLE

EXCLUSIVE RETAIL LEASING

KATZ & ASSOCIATES

RETAIL REAL ESTATE ADVISORS

Nancy Sumner

VICE PRESIDENT

nancysumner@katzretail.com

(404) 561-9447

Katy Figg

VICE PRESIDENT

katyfigg@katzretail.com

(704) 298-9464

Property Overview

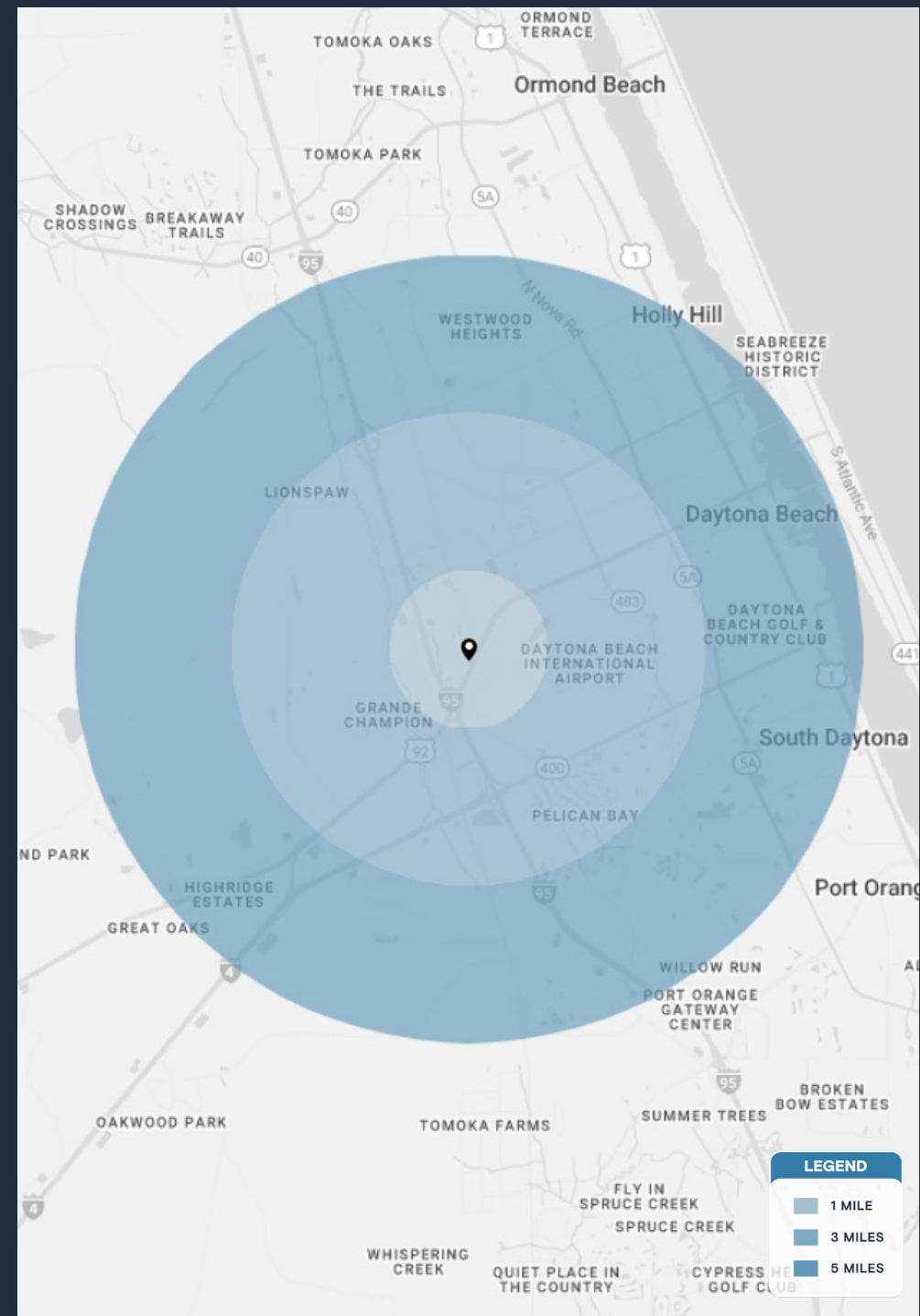
HIGHLIGHTS

- ±131,361 SF center anchored by World Market
- 0.4 miles from Daytona International Speedway
- Excellent visibility and access on West International Speedway Boulevard
- Pylon signage available
- West International Speedway Boulevard has over 8 million visitors each year
- 2.2 miles from Embry-Riddle with approximately 10,297 students
- 2.5 miles from Halifax Health Medical Center with 678 beds
- 3.2 miles from future plane manufacture, Aura Aero, which will create 1,000 jobs
- 1.6 miles from new 2.8M Amazon fulfillment facility with 1,200 employees
- Population (5 mile radius): 117,883
- Average household income (5 mile radius): \$75,362

DEMOGRAPHICS

	1 MILE	3 MILES	5 MILES
POPULATION	1,588	34,317	117,883
HOUSEHOLDS	782	14,608	50,854
EMPLOYEES	1,928	29,384	63,926
AVERAGE HH INCOME	\$55,322	\$78,700	\$75,362

	5 MINUTES	10 MINUTES	15 MINUTES
POPULATION	6,438	65,444	177,898
HOUSEHOLDS	2,797	27,047	77,396
EMPLOYEES	6,727	45,309	81,513
AVERAGE HH INCOME	\$73,171	\$70,823	\$77,925



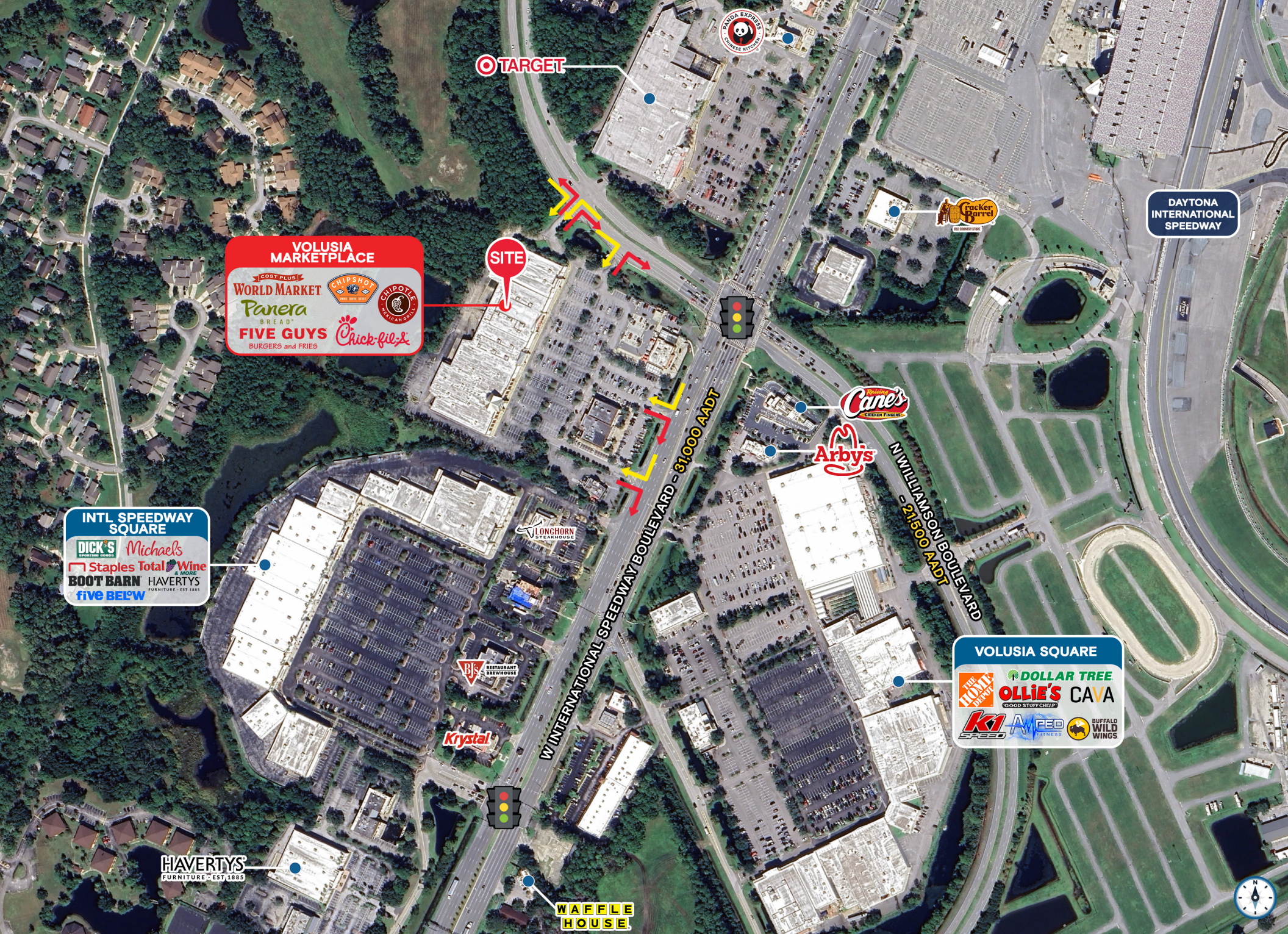
LEGEND

- 1 MILE
- 3 MILES
- 5 MILES

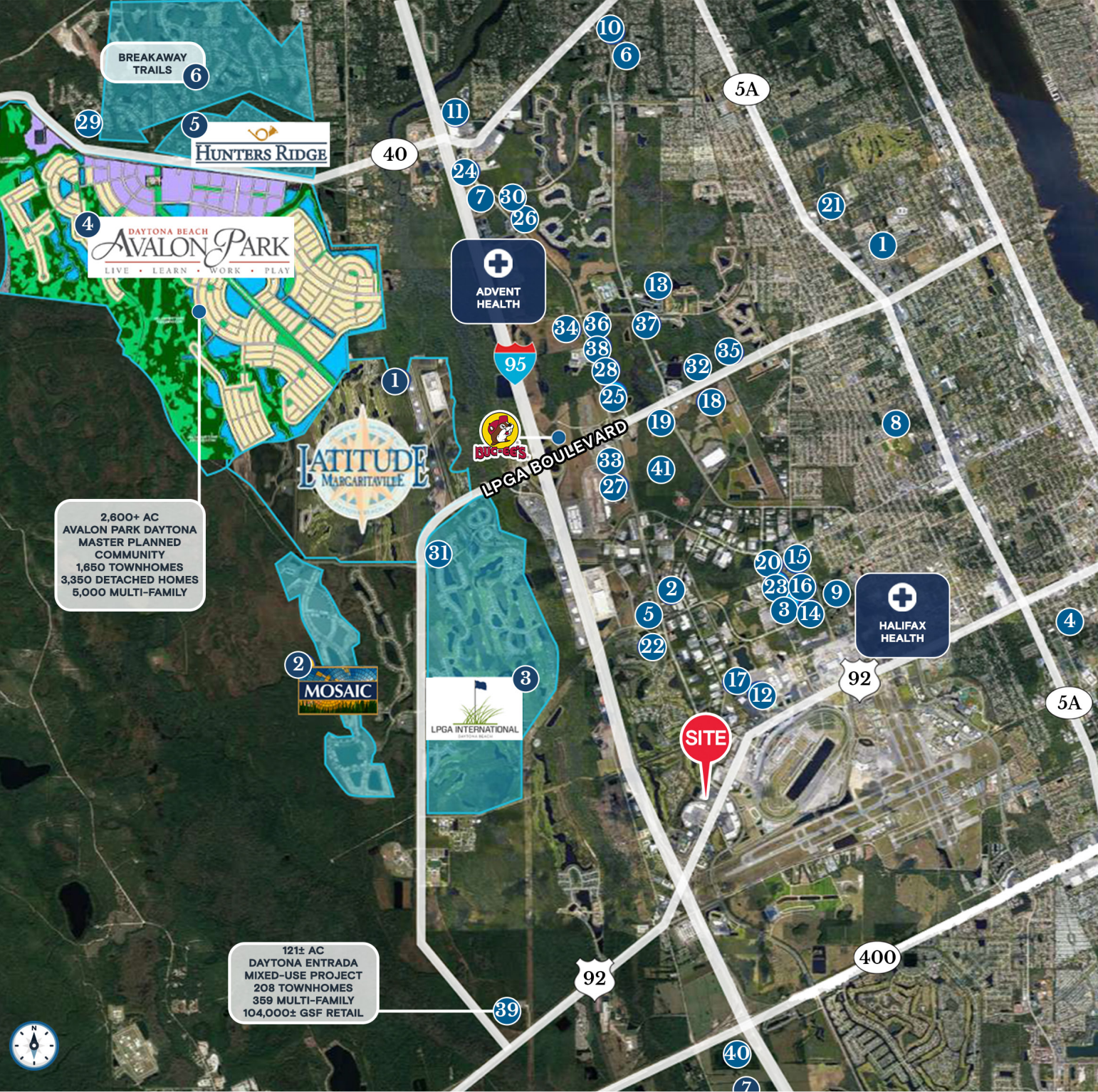


Tenant Roster

100	Negotiating LOI	22,352 SF	500	Available	50,075 SF	720	T-Mobile	2,271 SF
200	ChipShot	28,362 SF	600	Panera Bread	5,002 SF	730	Chipotle	3,200 SF
300	World Market	18,299 SF	710	Available	1,800 SF			







2,600+ AC
 AVALON PARK DAYTONA
 MASTER PLANNED
 COMMUNITY
 1,650 TOWNHOMES
 3,350 DETACHED HOMES
 5,000 MULTI-FAMILY

121± AC
 DAYTONA ENTRADA
 MIXED-USE PROJECT
 208 TOWNHOMES
 359 MULTI-FAMILY
 104,000± GSF RETAIL

LEGEND

SINGLE FAMILY DEVELOPMENTS

#	Property Name	Starting Price	Homes Sold	Total Units
1	Latitude Margaritaville	\$309k	1,907	3,500
2	Mosaic	\$310k	160	1,200
3	LPGA International	\$360k	1,208	6,226
4	Avalon Park	TBD	TBD	10,000
5	Hunters Ridge	\$190k	862	1,077
6	Breakaway Trails	\$210k	897	980
7	Waypoint	TBD	TBD	610

MULTI-FAMILY DEVELOPMENTS

#	Property Name	Units	Status	Year
1	Holly Point Apartments	126	E	1980
2	Indigo Pines Community	240	E	1985
3	The Harbor	168	E	1986
4	Pine Haven	136	E	2008
5	Carolina Club	224	E	2002
6	Ormond In The Pines	191	E	1984
7	Reserve at Ormond Beach	272	E	2003
8	The Park at Via Roma	288	E	1974
9	Anatole Apartments	208	E	1986
10	Fisherman's Landing	154	E	1986
11	Bermuda Estates at Ormond Beach	344	E	2006
12	One Daytona - The Midrise	114	U/C	2022
13	Integra Shores	288	E	2009
14	Lake Forest	384	E	1985
15	Lake Forest Apartments	384	E	1985
16	The Breakers Community	208	E	1985
17	Icon One Daytona	282	E	2019
18	500 East Apartments	301	E	2020
19	The Edison Daytona	223	U/C	2021
20	Wedgewood Apartments	300	E	1995
21	Charleston Place Apartments	216	E	2001
22	Indigo Plantation Apartments	304	E	1989
23	Coastline Cove	208	E	2000
24	San Marco	260	E	2003
25	Sands Parc Apartments	264	E	2017
26	The Napier	260	U/C	2020
27	Tomoka Pointe Apartments	276	E	2019
28	The Ellis	316	P	TBD
29	Jaffe Site	270	P	TBD
30	Carter	300	P	TBD
31	Tymber Creek	270	P	2022
32	LPGA & Clyde Morris Site	300	P	2022
33	Madison Pointe	240	E	2021
34	The Cottages at Daytona Beach	285	U/C	2021
35	Emerson	302	P	TBD
36	Theta	275	P	TBD
37	Wood Partners	300	P	TBD
38	Atlantica at Daytona	341	U/C	2024
39	Daytona Entrada	567	U/C	2027
40	Waypoint	1,050	U/C	2029
41	The Oasis Project	660	U/C	2027



Contact Brokers

Katy Figg
VICE PRESIDENT
katyfigg@katzretail.com
(704) 298-9464

Nancy Sumner
VICE PRESIDENT
nancysumner@katzretail.com
(404) 561-9447



KATZ & ASSOCIATES

RETAIL REAL ESTATE ADVISORS

katzretail.com

The information herein was obtained from third parties and has not been independently verified by Katz & Associates. Any and all interested parties should have their choice of experts inspect the property and verify all information. Katz & Associates makes no warranties or guarantees as to the information given to any prospective buyer or tenant. REV: 05.06.26