

# OFFICE FOR SUBLEASE

1131 POPLAR PLACE S | SEATTLE, WA



**THE ANDOVER  
COMPANY, INC.**

**CORFAC INTERNATIONAL**

**JACK CRANE**

206.258.3159

jacklc@andoverco.com

**JEFF CRANE**

206.336.5336

jcrane@andoverco.com

[www.andoverco.com](http://www.andoverco.com)

The information contained herein has been obtained from reliable sources, but is not guaranteed. A prospective buyer should verify each item relating to this property and all information contained herein.

SITE PROFILE

# PROPERTY HIGHLIGHTS

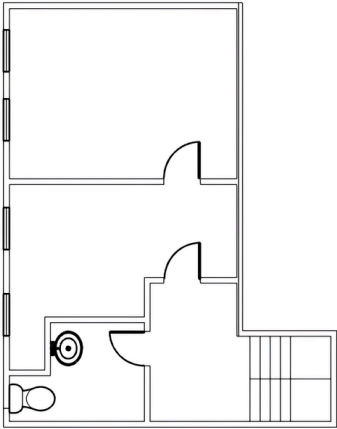
- **BUILDING SIZE** : 3,244 SF Office for Sublease
- **Master Lease** Runs through May 31<sup>st</sup>, 2028
- **\$17.00/SF** Base Rent Plus NNN's
- **\$7.03/SF** NNN's
- **Newly Built-Out** Kitchenette & Break Area
- **Large Window Line** with Natural Light
- **Ample Parking** with 6 EV Charging Stations
- **Convenient Access** to I-90 & I-5
- **Available** On 30 Days' Notice



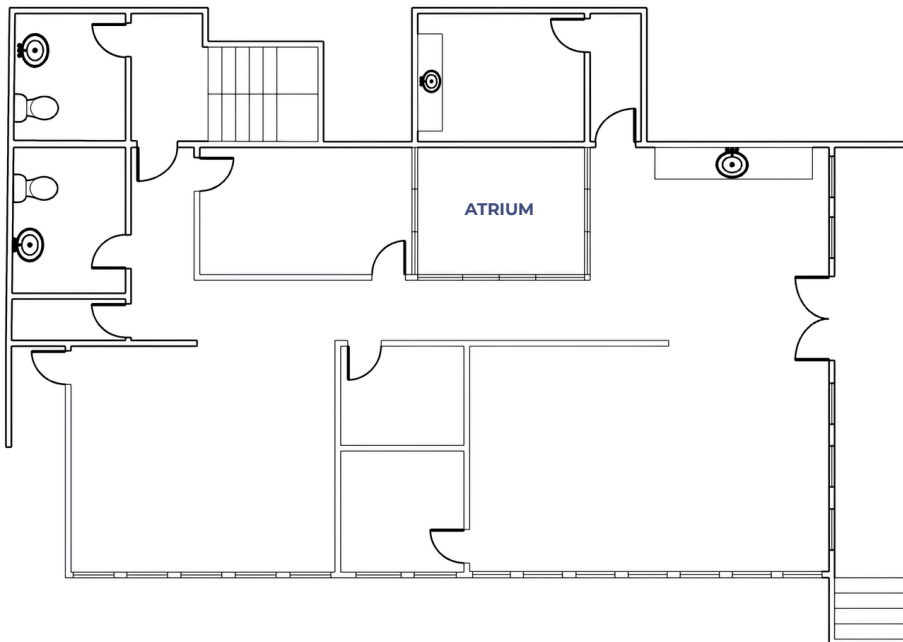
AT A GLANCE

# SUITE FLOOR PLAN

## SECOND FLOOR



## FIRST FLOOR



**JACK CRANE**

206.258.3159

jacklc@andoverco.com

**JEFF CRANE**

206.336.5336

jcrane@andoverco.com