

# For lease

Parkway Place 1 & 2  
Jacksonville, FL 32216



**Ross Crabtree**  
Managing Director  
[ross.crabtree@jll.com](mailto:ross.crabtree@jll.com)  
+1 904 559 3915

**Mack Keasler**  
Senior Associate  
[mack.keasler@jll.com](mailto:mack.keasler@jll.com)  
+1 904 559 3902

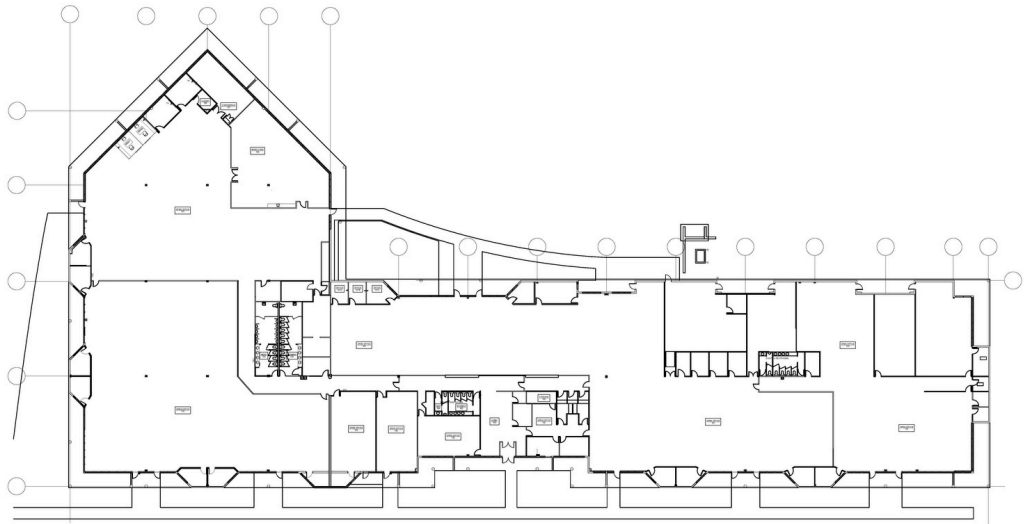
# About Parkway Place

- Two single story buildings built in 1986
- Zoned IBP
- Overflow parking lot with 281 spaces
- Building 1: 203 spaces (3.60 / 1,000 RSF)
- Building 2: 222 spaces (4.77 / 1,000 RSF)
- Convenient to I-95 and Butler Blvd.
- Easy access to Southpoint area amenities
- 13' clear height
- Grade level access

## Parkway Place 1

**6680 Southpoint Pkwy.**

**15,000 - 56,460 s.f. available**



## Parkway Place 2

**6700 Southpoint Pkwy.**

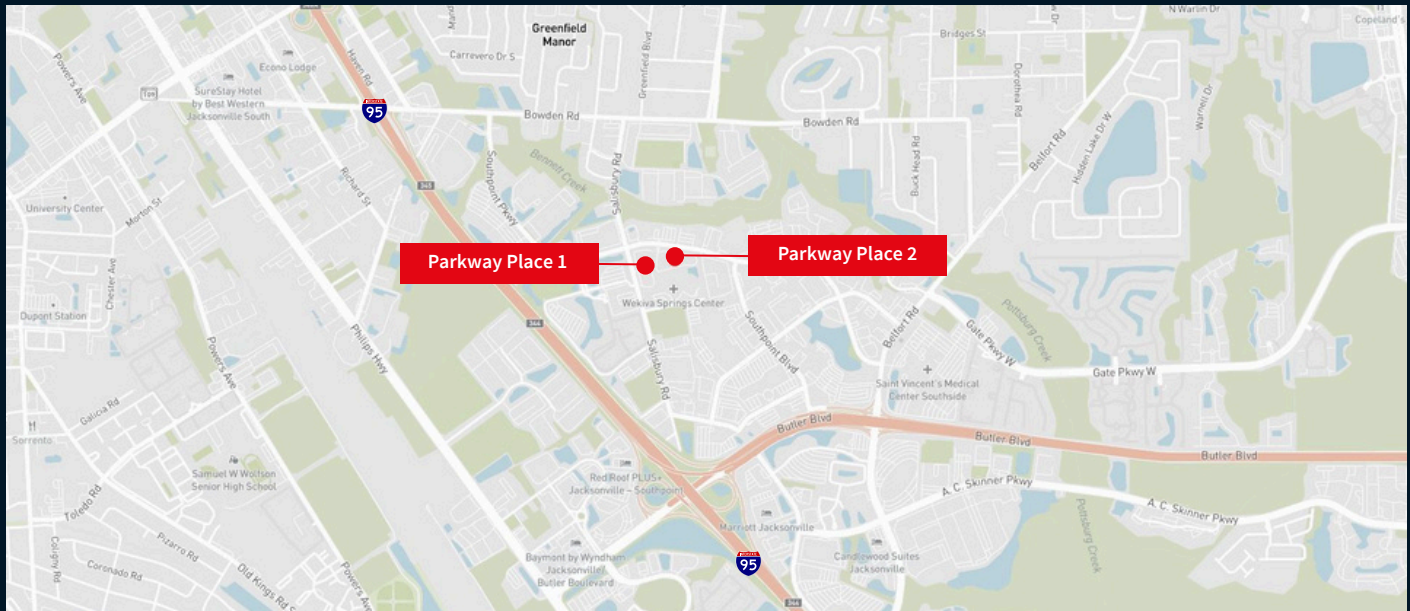
**Ste. 500 - 11,491 s.f. available**





# Parkway Place

Convenient Southside location



- Centrally located at the intersection of I-95, US-1 and Butler Blvd.
- Part of Southpoint Business Park
- Frontage on Southpoint Pkwy.
- Quick access to all major roadways including Butler Blvd., US-1 and I-95
- Easy access to Southpoint area amenities

**Ross Crabtree**  
Managing Director  
ross.crabtree@jll.com  
+1 904 559 3915

**Mack Keasler**  
Senior Associate  
mack.keasler@jll.com  
+1 904 559 3902