



Marketing Setup
148 West 24th Street, Gallery

YIMIN GE OF COMPASS
KEITH COPLEY OF DOUGLAS ELLIMAN

COMPASS

 DouglasElliman

148 WEST 24TH STREET, 11TH FL.

GALLERY SPACE • FOR LEASE

AVAILABLE SPACE : 5,000SF

ASKING RENT: UPON REQUEST

TERM: NEGOTIABLE

POSSESSION: IMMEDIATE

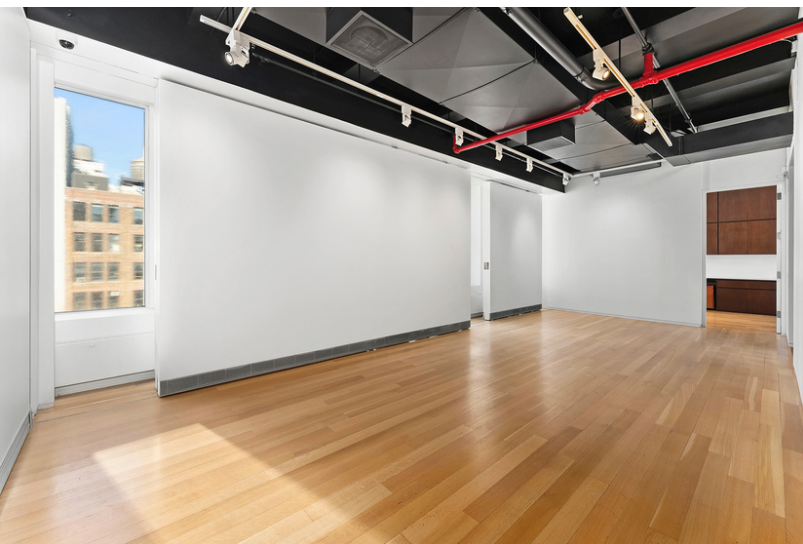
SPACE DESCRIPTION

- Located in the Chelsea art district on 24th street between 6th and 7th avenue.
- Full floor gallery space that occupies the entire 11th floor
- 3 state-of-the-art, large exhibition spaces (500-600 sq. feet each)
- Connected to one another by a central hallway that can be used as a gallery space
- Each gallery space has sliding walls that permit work to be lit by either natural light through the large windows or by the track lighting system
- Storage space designed for artwork in several of the galleries
- Separate reception area and office space
- Tenant controlled AC and sub-metered electric
- Oversized windows facing north, west and south
- Hardwood flooring throughout
- Full kitchen with appliances
- 9- 11 ft. high ceilings
- Open to Pop-ups
- 1 bathroom
- 2 big elevators open into the space
- 1 Freight elevator with dedicated loading /unloading hours (9am - 5pm)

[VIRTUAL TOUR](#)

148 WEST 24TH STREET, 11TH FL.

GALLERY SPACE • FOR LEASE



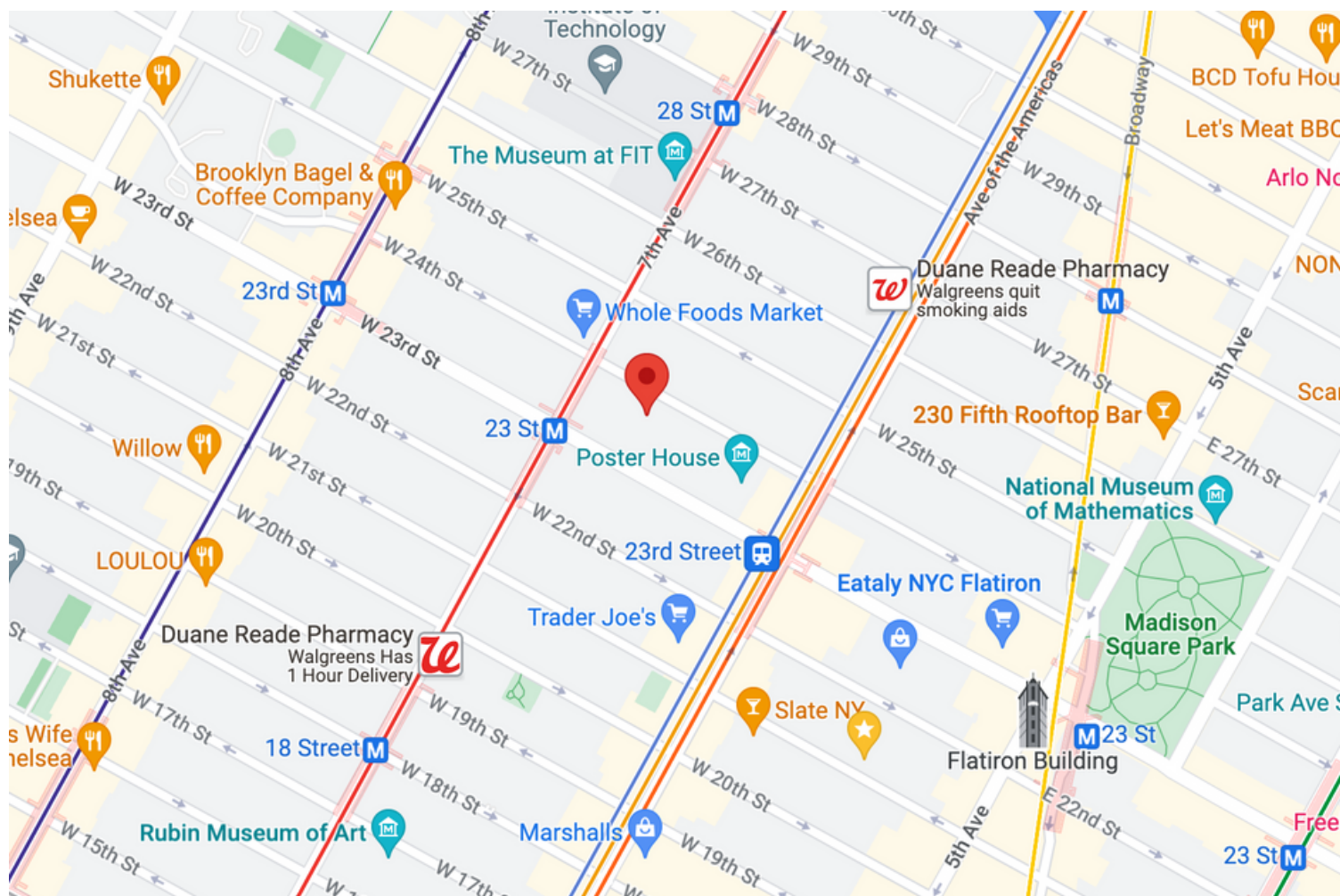
148 WEST 24TH STREET, 11TH FL.

GALLERY SPACE • FOR LEASE



148 WEST 24TH STREET, 11TH FL.

GALLERY SPACE • FOR LEASE



TRANSPORTATION

1 at 23rd Street under 500 feet

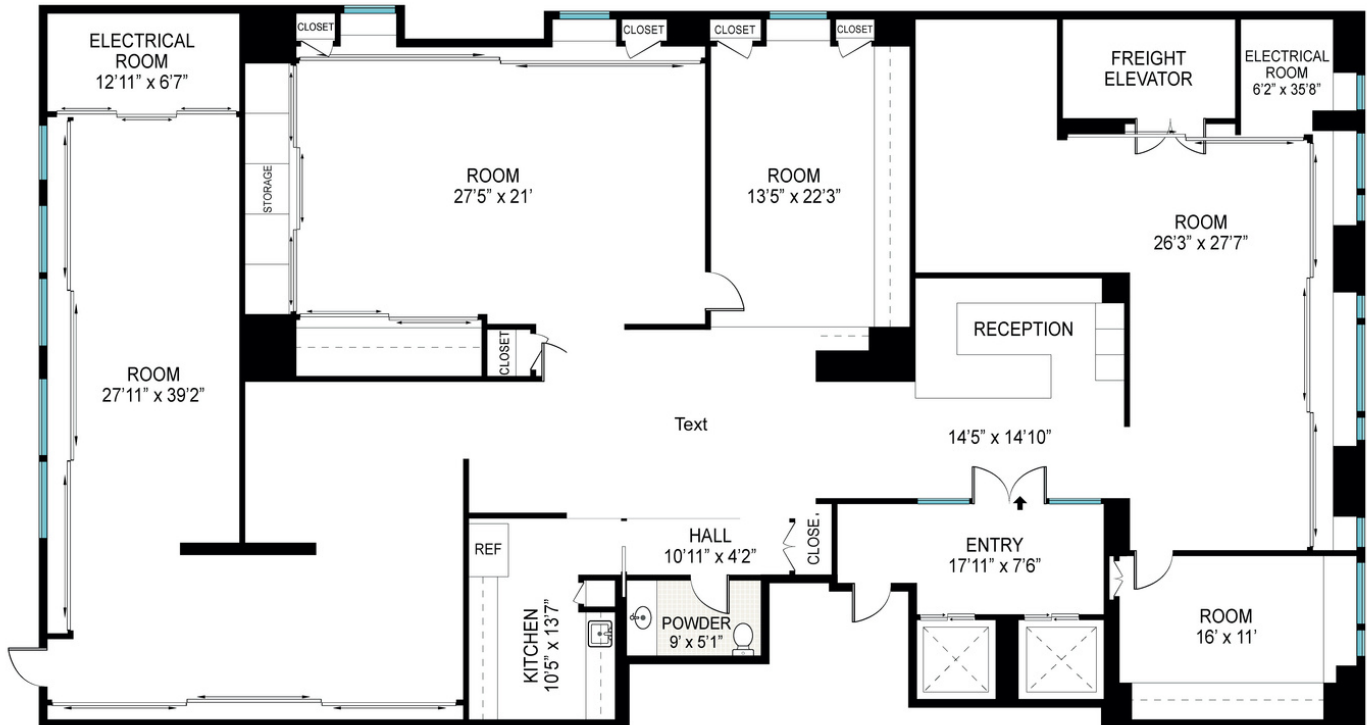
F M at 23rd St 0.11 miles

PATH at 23rd Street Station 0.13 miles

1 at 28th St 0.17 miles

C E at 23rd St 0.2 miles

Contact Us



Scale in feet. Indicative only. Dimensions are approximate. All information contained herein is gathered from sources we believe to be reliable. However, we cannot guarantee its accuracy and interested persons should rely on their own inquiries.

 DouglasElliman

YIMIN
GE

LIC. R. E. ASSOCIATE BROKER
YIMIN.GE@COMPASS.COM
917.923.2607

KEITH
COPLEY

LIC. REAL ESTATE SALESPERSON
KEITH.COPLEY@ELLIMAN.COM
646.226.9609