

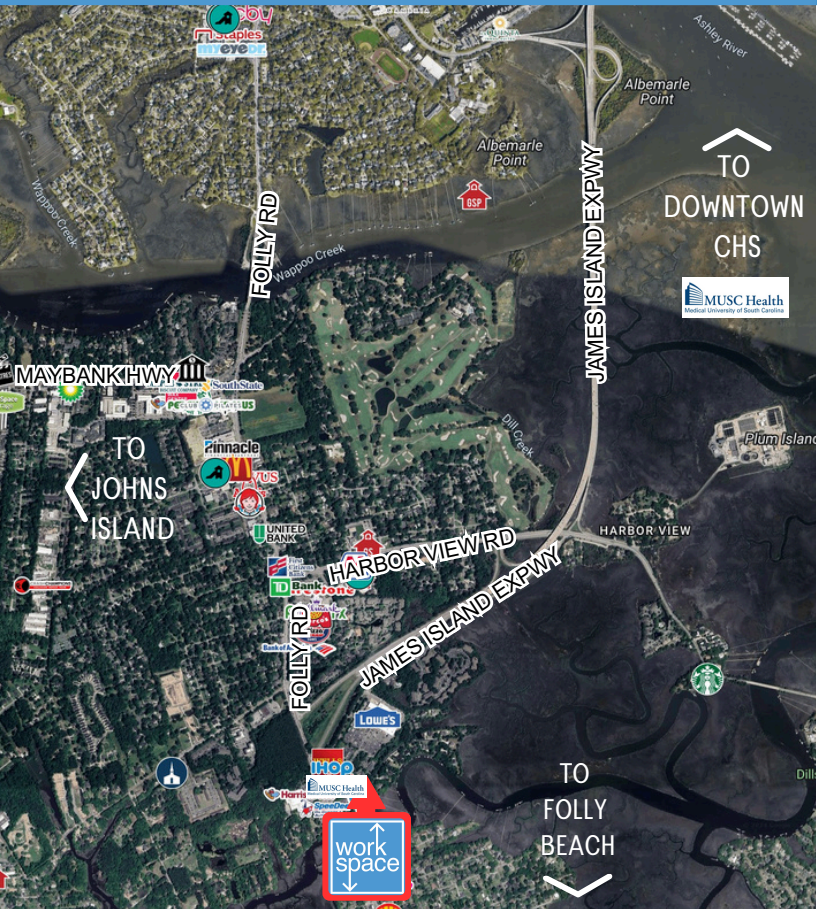


Ellis Oaks Office Park

656 Ellis Oak Ave, First Floor, Charleston, SC 29412



EXECUTIVE OFFICES, DEDICATED DESKS AND HOT DESKS
OFF THE JAMES ISLAND CONNECTOR



- Newly built contemporary building in James Island's Ellis Oaks Office Park, full of natural light, creek views, modern aesthetics and on-site parking
- Well-located waterfront property one traffic light off of the James Island Connector
- Extremely convenient to downtown Charleston, Charleston Medical District, the Medical University of South Carolina and College of Charleston

• **Rent includes:**

- ✓ Electricity
- ✓ Water/sewer
- ✓ High speed wifi
- ✓ 24/7 Access
- ✓ Shared Conference room
- ✓ Phone booths
- ✓ Kitchenette
- ✓ Janitorial
- ✓ Restrooms
- ✓ Security systems
- ✓ On-site parking
- ✓ Use of mailing address

Contact

workspace@twinriverscap.com 843-203-1678

workspacechs.com

Executive Suites, Co-Working Spaces, Hot Desks





Ellis Oaks Office Park

656 Ellis Oak Ave, First Floor, Charleston, SC 29412

HOT DESKS

- ✓ FLOATING WORKSPACE
(available in cafe area, community table, lounge area, and various bar tables)
- ✓ USE OF PHONE BOOTHS
- ✓ STORAGE LOCKER
- ✓ À LA CARTE OPTIONS:
 - ✓ Mailing Address
 - ✓ Access to Conference Room

DEDICATED DESK

- ✓ DEDICATED DESK SPACE
- ✓ PRIVATE, LOCKABLE FILE CABINET
- ✓ USE OF PHONE BOOTHS
- ✓ USE OF CONFERENCE ROOM
5 Hours per Month
(rent includes one use/month; additional conference room time is available for a fee)
- ✓ STORAGE LOCKER
- ✓ USE OF MAILING ADDRESS

EXECUTIVE OFFICE SUITES

- ✓ SUITES OFFERED AS:
 - Individual Offices
 - In Combination as
 - Multi-Room Office Configurations
- ✓ USE OF CONFERENCE ROOM
8 Hours per Month
(additional conference room time available for a fee)
- ✓ USE OF MAILING ADDRESS
- ✓ FURNISHED OPTION
Office can be furnished with power stand-up desk workstation for an additional fee

Contact

 workspace@twinriverscap.com  843-203-1678

workspacechs.com

Executive Suites, Co-Working Spaces, Hot Desks



