

METCALF 203

20305 METCALF AVE, BUCYRUS, KS 66013

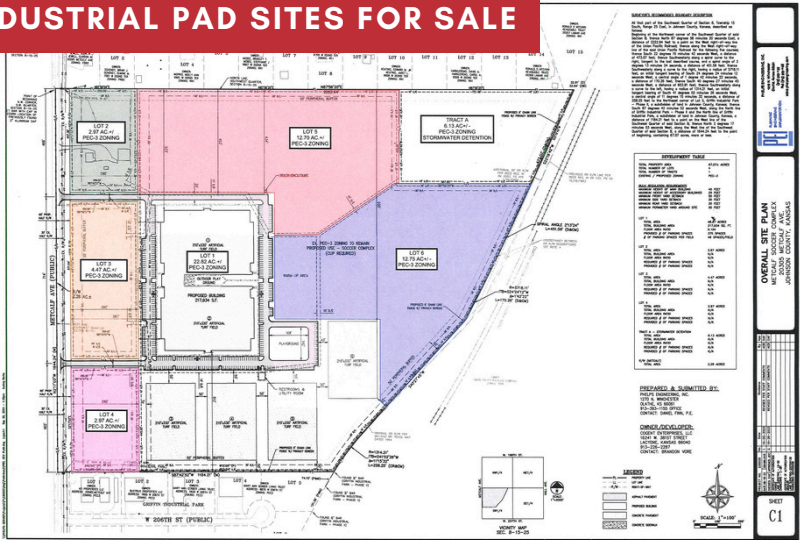


REECE

COMMERCIAL REAL ESTATE

a Berkshire Hathaway Affiliate

INDUSTRIAL PAD SITES FOR SALE



JIM THOME

913.548.8700

JTHOME@REECECOMMERCIAL.COM



ALEX THOME

913.709.3849

ATHOME@REECENICHOLS.COM

PROPERTY DETAILS

- INDUSTRIAL PAD SITES AVAILABLE
- LIGHT INDUSTRIAL PEC-3 ZONING
- ACCESS FROM HWY 69 & 199TH STREET - SOUTH OF STILWELL STATION
- LOT 1: CONTRACT PENDING
- LOT 2: CONTRACT PENDING
- LOT 3: CONTRACT PENDING
- LOT 4: 2.97 ACRES
- LOT 5: 2 - 12.7 ACRES - DIVISIBLE
- LOT 6: 2 - 12.75 ACRES - DIVISIBLE
- POTENTIAL TO PURCHASE 2.97 ACRES TO 66 ACRES - PLEASE CONTACT LISTING AGENTS

\$5 PSF

The information above has been obtained from sources believed reliable. While we do not doubt its accuracy we have not verified it and make no guarantee, warranty or representation about it. It is your responsibility to independently confirm its accuracy and completeness. Any projections, opinions, assumptions, or estimates used are for example only and do not represent the current or future performance of the property. You and your advisors should conduct a careful, independent investigation of the property to determine to your satisfaction the suitability of the property for your needs. © 2020

METCALF 203

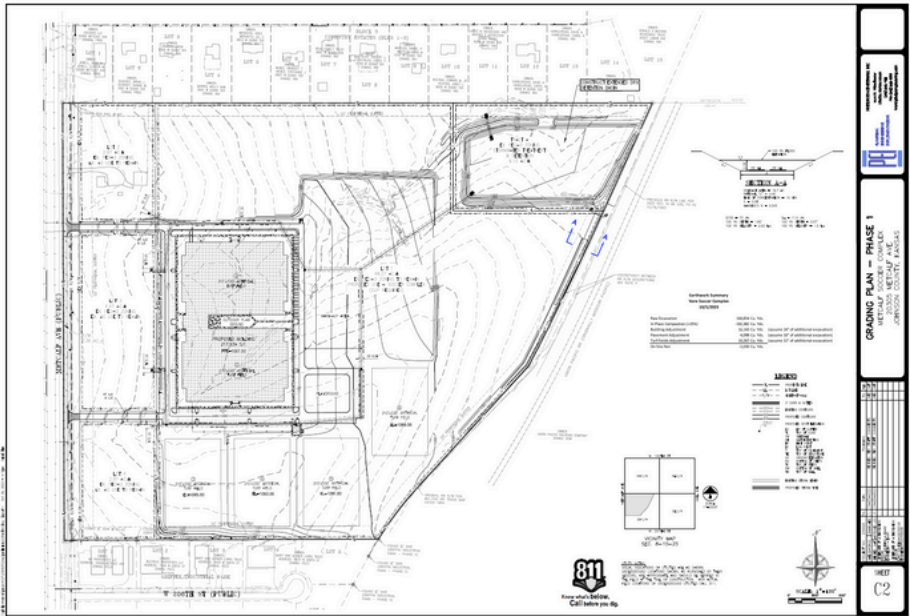
20305 METCALF AVE, BUCYRUS, KS 66013



REECE
COMMERCIAL REAL ESTATE

a Berkshire Hathaway Affiliate

GRADING PLAN



JIM THOME

913.548.8700

JTHOME@REECECOMMERCIAL.COM

ALEX THOME

913.709.3849

ATHOME@REECENICHOLS.COM

The information above has been obtained from sources believed reliable. While we do not doubt its accuracy we have not verified it and make no guarantee, warranty or representation about it. It is your responsibility to independently confirm its accuracy and completeness. Any projections, opinions, assumptions, or estimates used are for example only and do not represent the current or future performance of the property. You and your advisors should conduct a careful, independent investigation of the property to determine to your satisfaction the suitability of the property for your needs. © 2020

METCALF 203

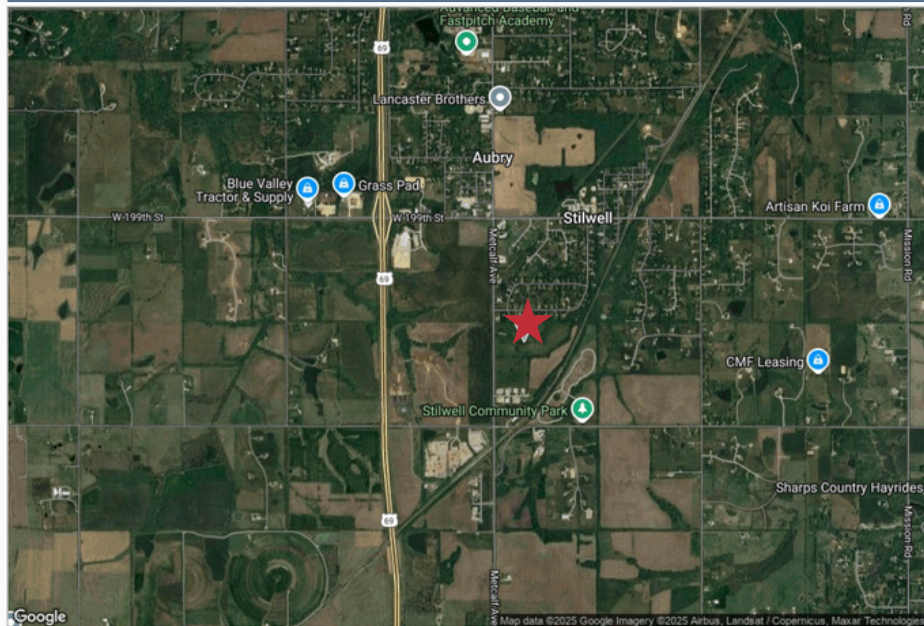
20305 METCALF AVE, BUCYRUS, KS 66013



REECE
COMMERCIAL REAL ESTATE

a Berkshire Hathaway Affiliate

203



Copyrighted report licensed to Reece Commercial Real Estate - 24269234



3/20/25



JIM THOME

☎ 913.548.8700

✉ JTHOME@REECECOMMERCIAL.COM



ALEX THOME

☎ 913.709.3849

✉ ATHOME@REECENICHOLS.COM

The information above has been obtained from sources believed reliable. While we do not doubt its accuracy we have not verified it and make no guarantee, warranty or representation about it. It is your responsibility to independently confirm its accuracy and completeness. Any projections, opinions, assumptions, or estimates used are for example only and do not represent the current or future performance of the property. You and your advisors should conduct a careful, independent investigation of the property to determine to your satisfaction the suitability of the property for your needs. © 2020