

Recker Hwy Comm/Industrial

5613 Recker Hwy, Winter Haven, FL 33880



Presented By:
Coldwell Banker Vanguard Realty



Recker Hwy Comm/Industrial

5613 Recker Hwy, Winter Haven, FL 33880

Property Details

Centrally located land perfect for commercial or industrial uses. Owner has subdivided into 4 separate tracts with full utilities and ready to build. Located in the growing area of Winter Haven, FL less than 20 minutes east of Lakeland, a little over an hour southwest of Orlando and about an hour northeast of Tampa, this property is in a great area for warehouses, flex warehouses, distribution, offices, contractors, convenience store, self-storage and many other uses. Seller has meticulously planned for many uses and has or is completing all infrastructure to that a buyer can begin construction on his own project for whatever use meets the need.

Price: \$7,900,000

- Perfect for many uses.
- Infrastructure (utilities, street) in place.
- Great Central Florida location.

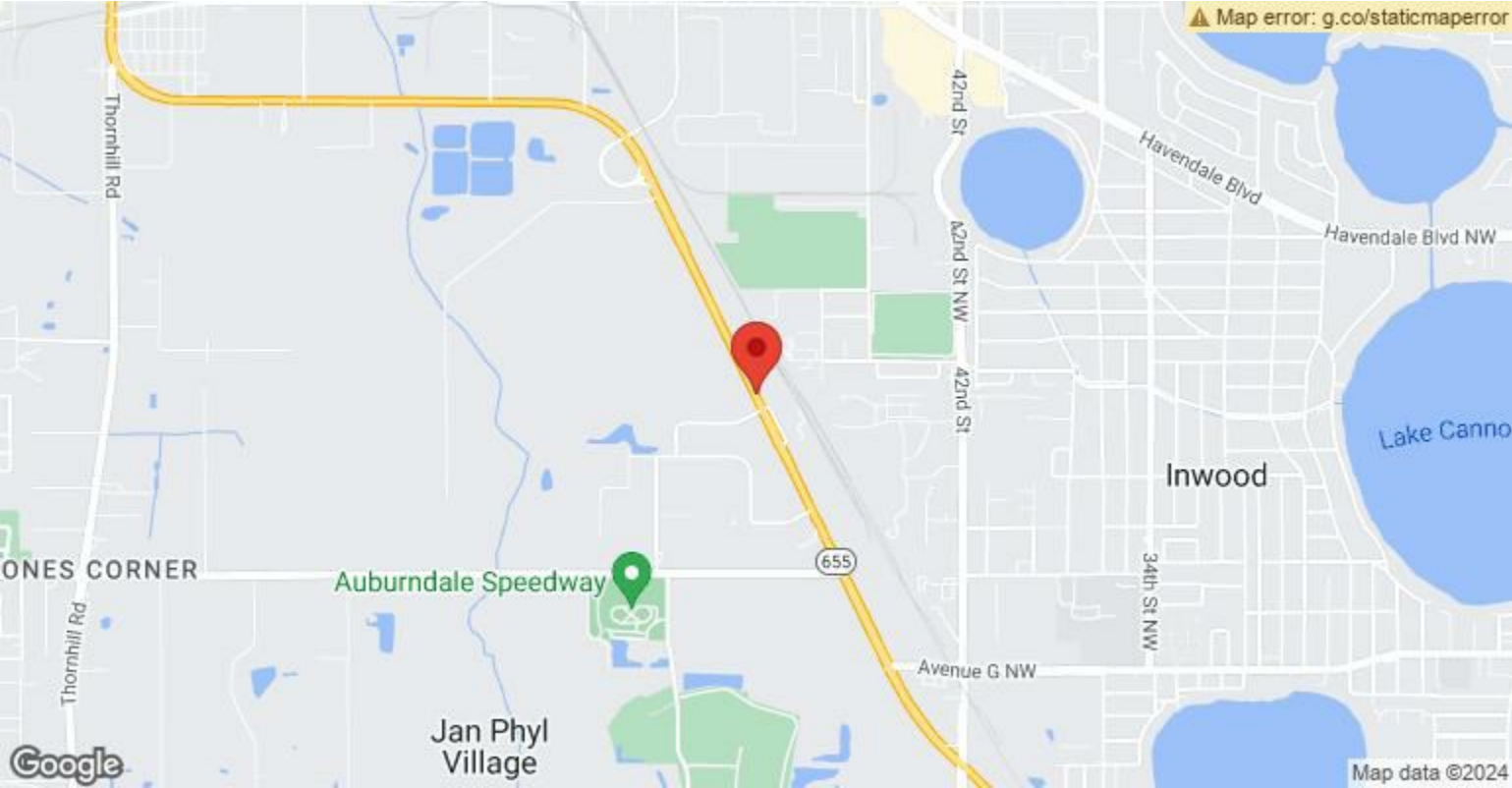
View the full listing here: www.hammondfamilygroup.com

Price:	\$7,900,000
Property Type:	Land
Property Subtype:	Industrial
Proposed Use:	Commercial
Sale Type:	Investment or Owner User
Total Lot Size:	21.12 AC
No. Lots:	1
Zoning Description:	BPC2
APN / Parcel ID:	25-28-14-000000-042080

Recker Hwy Comm/Industrial

5613 Recker Hwy, Winter Haven, FL 33880

Location



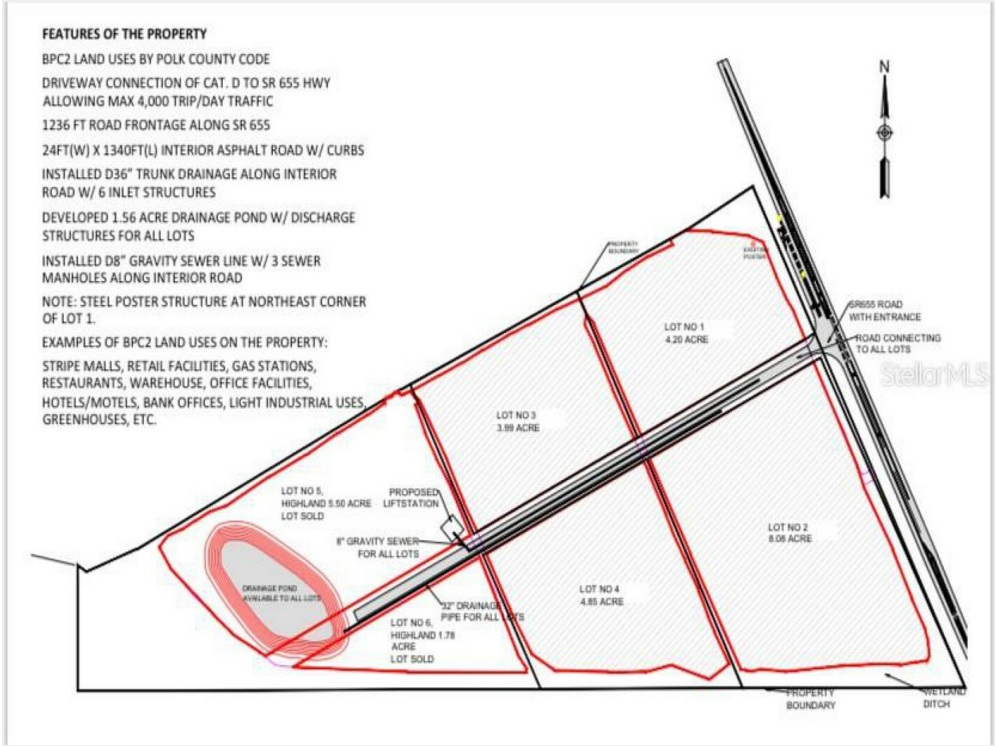
Recker Hwy Comm/Industrial

5613 Recker Hwy, Winter Haven, FL 33880

Property Photos



Aerial Lot View

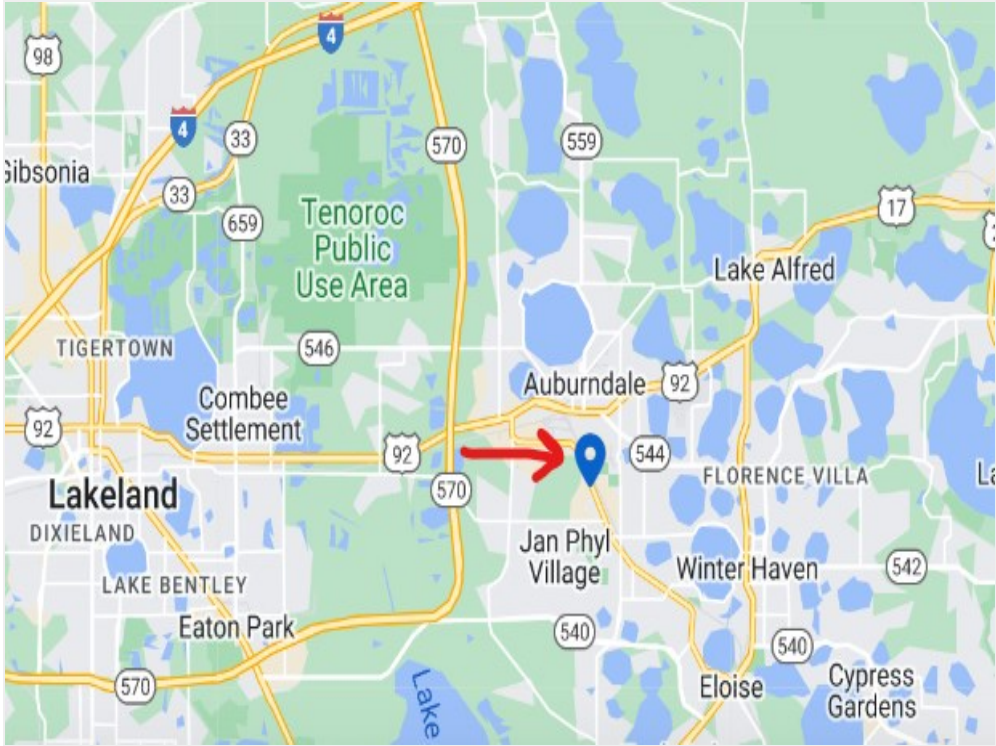


Lot Layout Aerial w-acreage

Recker Hwy Comm/Industrial

5613 Recker Hwy, Winter Haven, FL 33880

Property Photos



Aerial Proximity



Aerial View 2

Recker Hwy Comm/Industrial

5613 Recker Hwy, Winter Haven, FL 33880

Property Photos



Aerial View 3



Aerial View 4

Recker Hwy Comm/Industrial

5613 Recker Hwy, Winter Haven, FL 33880

Property Photos



Aerial View 5



Aerial View 6 (pond)

Recker Hwy Comm/Industrial

5613 Recker Hwy, Winter Haven, FL 33880

Property Photos



Aerial View 7



Aerial View 8

Recker Hwy Comm/Industrial

5613 Recker Hwy, Winter Haven, FL 33880

Property Photos



Aerial View As-Is

Recker Hwy Comm/Industrial

5613 Recker Hwy, Winter Haven, FL 33880



Thomas Hammond

thammond@cbvfl.com

(904) 806-1218

**Coldwell Banker
Vanguard Realty**

240 Ponte Vedra Park Dr, Suite
201

Ponte Vedra Beach, FL 32082

