

# 8184

## STARWOOD DRIVE

### LOVES PARK, IL

# PROPERTY FEATURES

- 9,500 SF total
- 3,500 SF of office
- 16 clear
- 400 amps/480 volts
- Wet system
- Block and insulated metal panel structure Secured yard for outside storage
- For Sublease - lease expires 10/31/2028
- 6 drive in doors
- Available July 1, 2025
- Asking \$9.50 PSF gross

Proximity to I-90 expressway and the 4-way interchange at Riverside Blvd.

Ideal for maintenance facility, equipment rental and sales service.

## CONTACT

**AL CARUANA**

Executive Managing Director

Mobile: +1 847 456 8417

[al.caruana@cushwake.com](mailto:al.caruana@cushwake.com)

**SAM ARTHUR**

Senior Director

Mobile: +1 720 982 9644

[samuel.arthur@cushwake.com](mailto:samuel.arthur@cushwake.com)

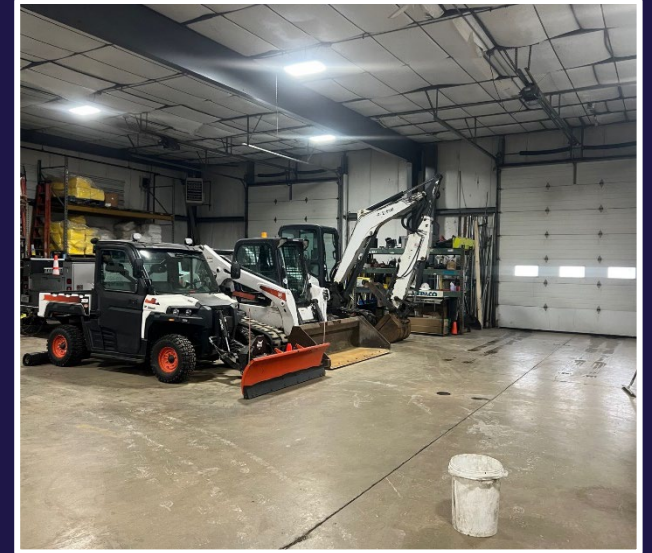
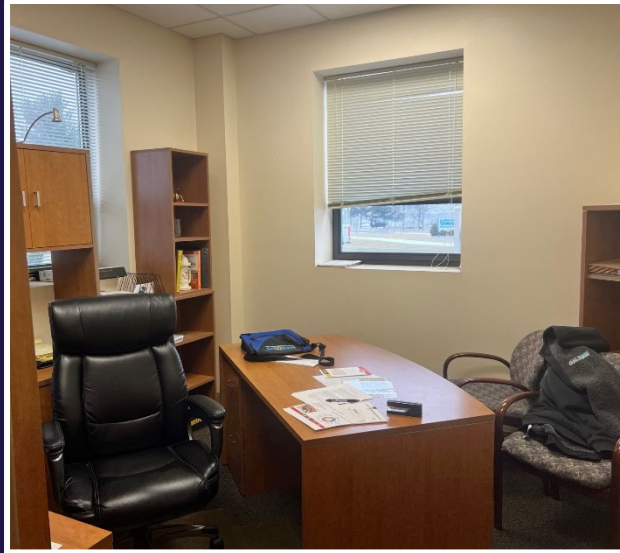


©2025 Cushman & Wakefield. All rights reserved. The material in this presentation has been prepared solely for information purposes and is strictly confidential. Any disclosure, use, copying or circulation of this presentation (or the information contained within it) is strictly prohibited, unless you have obtained Cushman & Wakefield's prior written consent. The views expressed in this presentation are the views of the author and do not necessarily reflect the views of Cushman & Wakefield. Neither this presentation nor any part of it shall form the basis of, or be relied upon in connection with any offer, or act as an inducement to enter into any contract or commitment whatsoever. NO REPRESENTATION OR WARRANTY IS GIVEN, EXPRESS OR IMPLIED, AS TO THE ACCURACY OF THE INFORMATION CONTAINED WITHIN THIS PRESENTATION, AND CUSHMAN & WAKEFIELD IS UNDER NO OBLIGATION TO SUBSEQUENTLY CORRECT IT IN THE EVENT OF ERRORS.



# PROPERTY PHOTOS

8184  
STARWOOD DRIVE  
LOVES PARK, IL





# AERIAL MAP

8184  
STARWOOD DRIVE  
LOVES PARK, IL

