

Specifications

±19,976 SF
BUILDING SIZE

±0.575 AC
Block 4001, Lot 1
LOT SIZE

1 Dock / Bay
LOADING

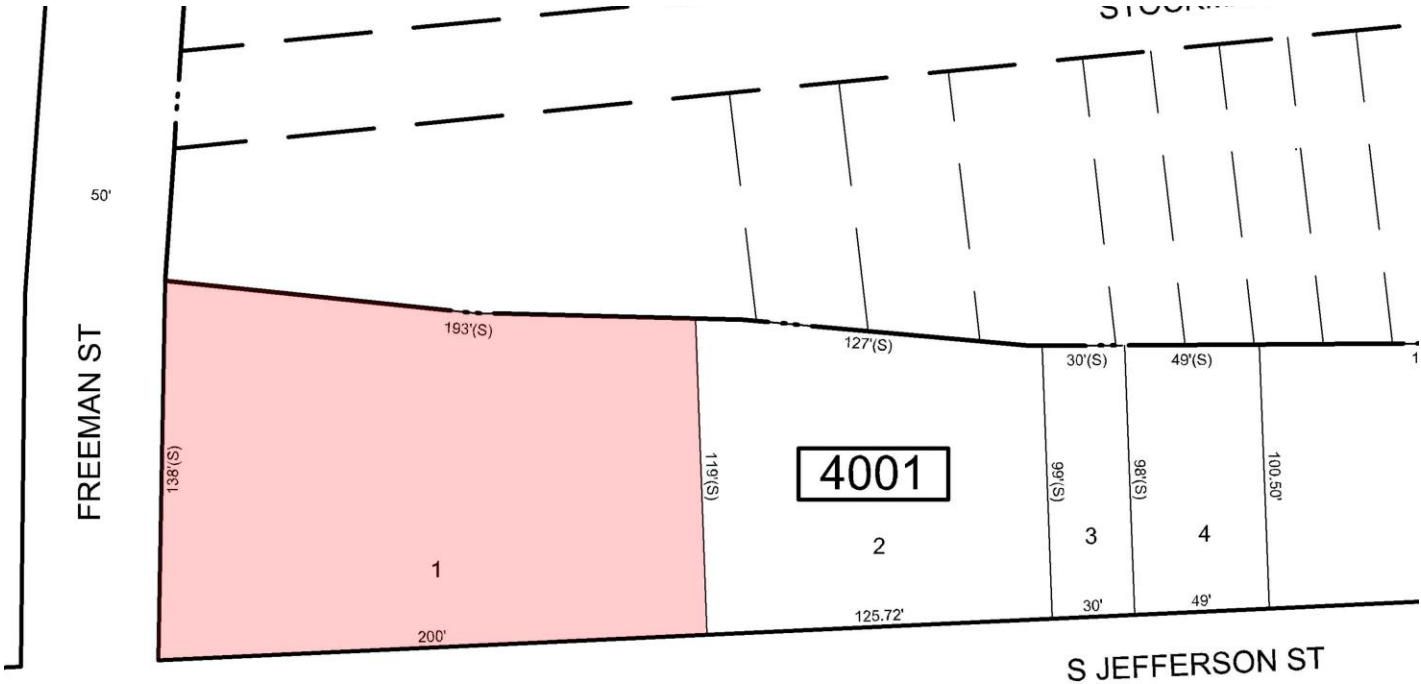
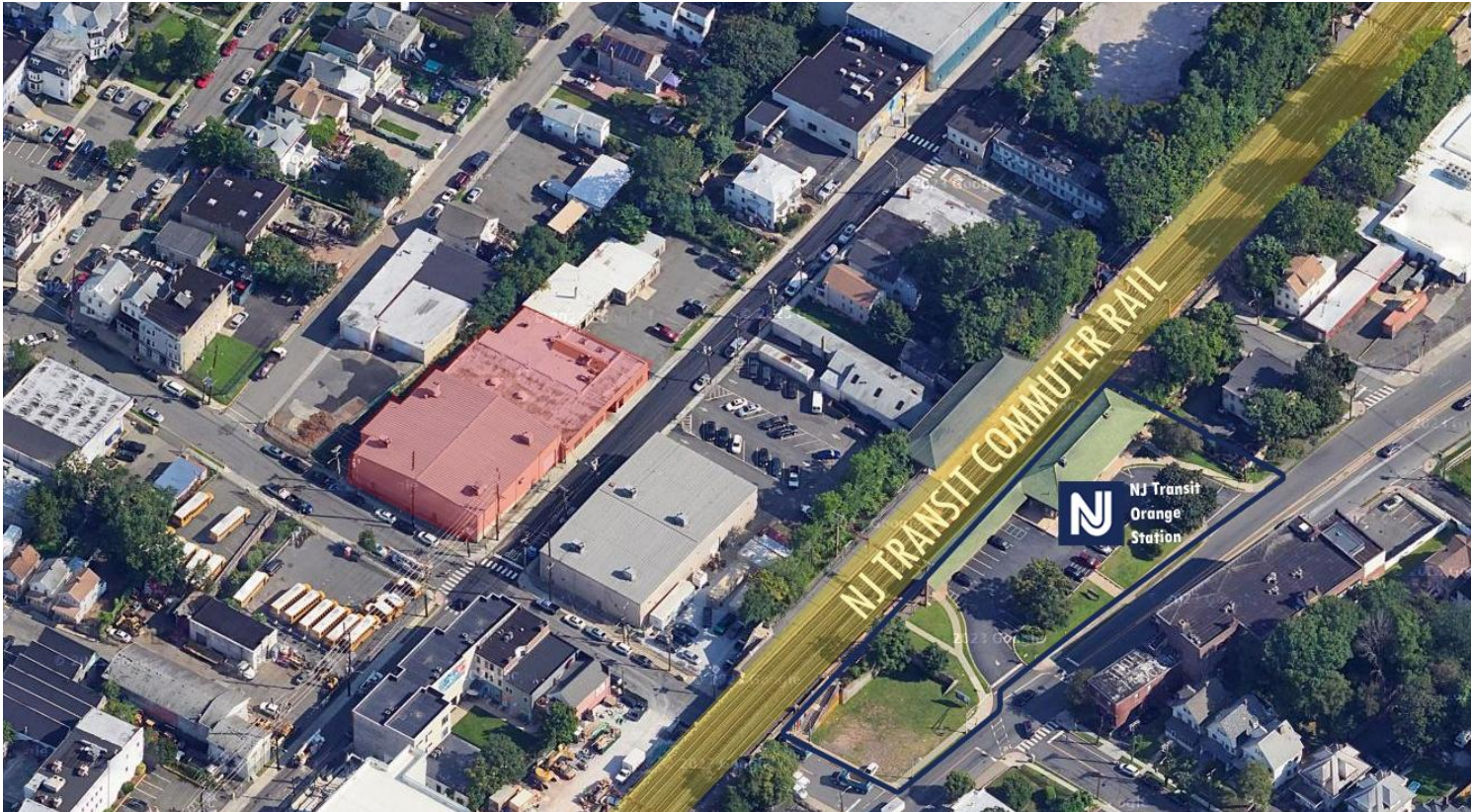
12' – 29'
CEILING HEIGHTS

\$62,485.71
TAXES (2025)

CAM: \$0.55
Insurance: \$0.40
Real Estate taxes: \$2.90
Total: \$3.85 PSF
OPEX

For additional property information or to arrange an inspection, please contact the exclusive brokers:

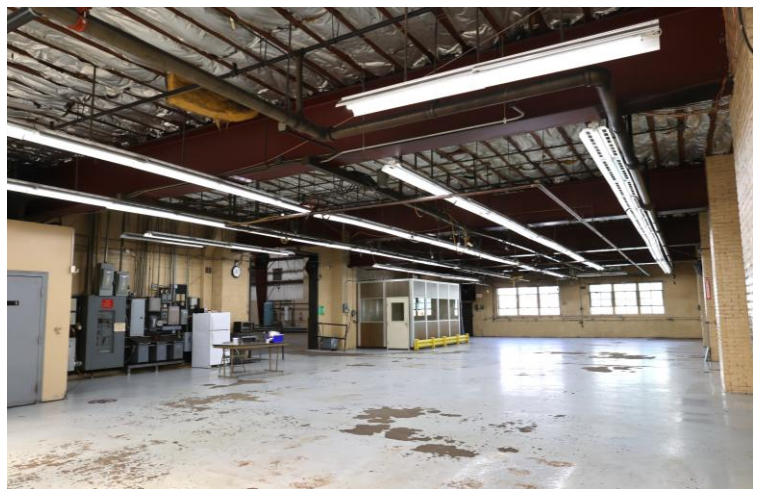
Jason M. Crimmins, CCIM, SIOR, Chief Executive Officer, 973.379.6644 x 122, jmcrimmins@blauberg.com
Alessandro (Alex) Conte, CCIM, SIOR, President, 973.379.6644 x 131, aconte@blauberg.com
Peter J. Murano, Jr., Managing Executive Director, 973.379.6644 x 114, pjmurano@blauberg.com
Nicholas Bio, Associate, 973.379.6644 x 233, nbio@blauberg.com



For additional property information or to arrange an inspection, please contact the exclusive brokers:

Jason M. Crimmins, CCIM, SIOR, Chief Executive Officer, 973.379.6644 x 122, jmcrimmins@blauberg.com
Alessandro (Alex) Conte, CCIM, SIOR, President, 973.379.6644 x 131, aconte@blauberg.com
Peter J. Murano, Jr., Managing Executive Director, 973.379.6644 x 114, pjmurano@blauberg.com
Nicholas Bio, Associate, 973.379.6644 x 233, nbio@blauberg.com

The information contained herein has been obtained from sources considered to be reliable, but no guarantee of its accuracy is made by this company. In addition, no representation is made respecting zoning, condition of title, dimensions, or any matters of a legal or environmental nature. Such matters should be referred to legal counsel for determination. Terms and conditions are subject to change without prior notice. Subject to errors and omissions.



For additional property information or to arrange an inspection, please contact the exclusive brokers:

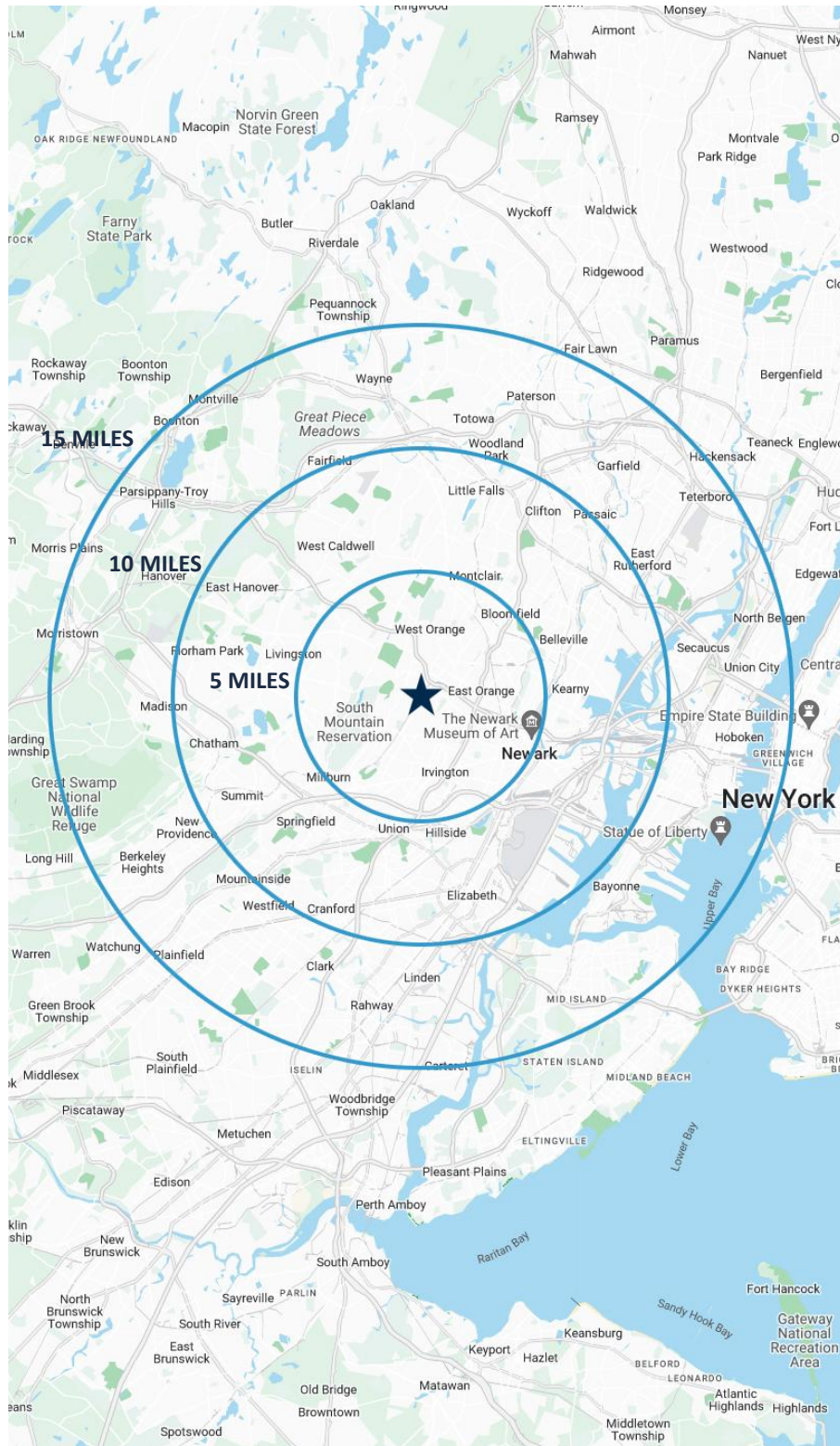
Jason M. Crimmins, CCIM, SIOR, Chief Executive Officer, 973.379.6644 x 122, jmcrimmins@blauberg.com

Alessandro (Alex) Conte, CCIM, SIOR, President, 973.379.6644 x 131, aconte@blauberg.com

Peter J. Murano, Jr., Managing Executive Director, 973.379.6644 x 114, pjmurano@blauberg.com

Nicholas Bio, Associate, 973.379.6644 x 233, nbio@blauberg.com

The information contained herein has been obtained from sources considered to be reliable, but no guarantee of its accuracy is made by this company. In addition, no representation is made respecting zoning, condition of title, dimensions, or any matters of a legal or environmental nature. Such matters should be referred to legal counsel for determination. Terms and conditions are subject to change without prior notice. Subject to errors and omissions.



5 MILES

- Total Population: 775,792
- Households: 289,926
- Median Household Income: \$95,735
- Average Household Size: 2.6
- Transportation to Work: 401,039
- Labor Force: 615,578

10 MILES

- Total Population: 2.0M
- Households: 734,682
- Median Household Income: \$106,420
- Average Household Size: 2.7
- Transportation to Work: 1.05M
- Labor Force: 1.6M

15 MILES

- Total Population: 5.13M
- Households: 2.07M
- Median Household Income: \$122,316
- Average Household Size: 2.4
- Transportation to Work: 2.79M
- Labor Force: 4.22M

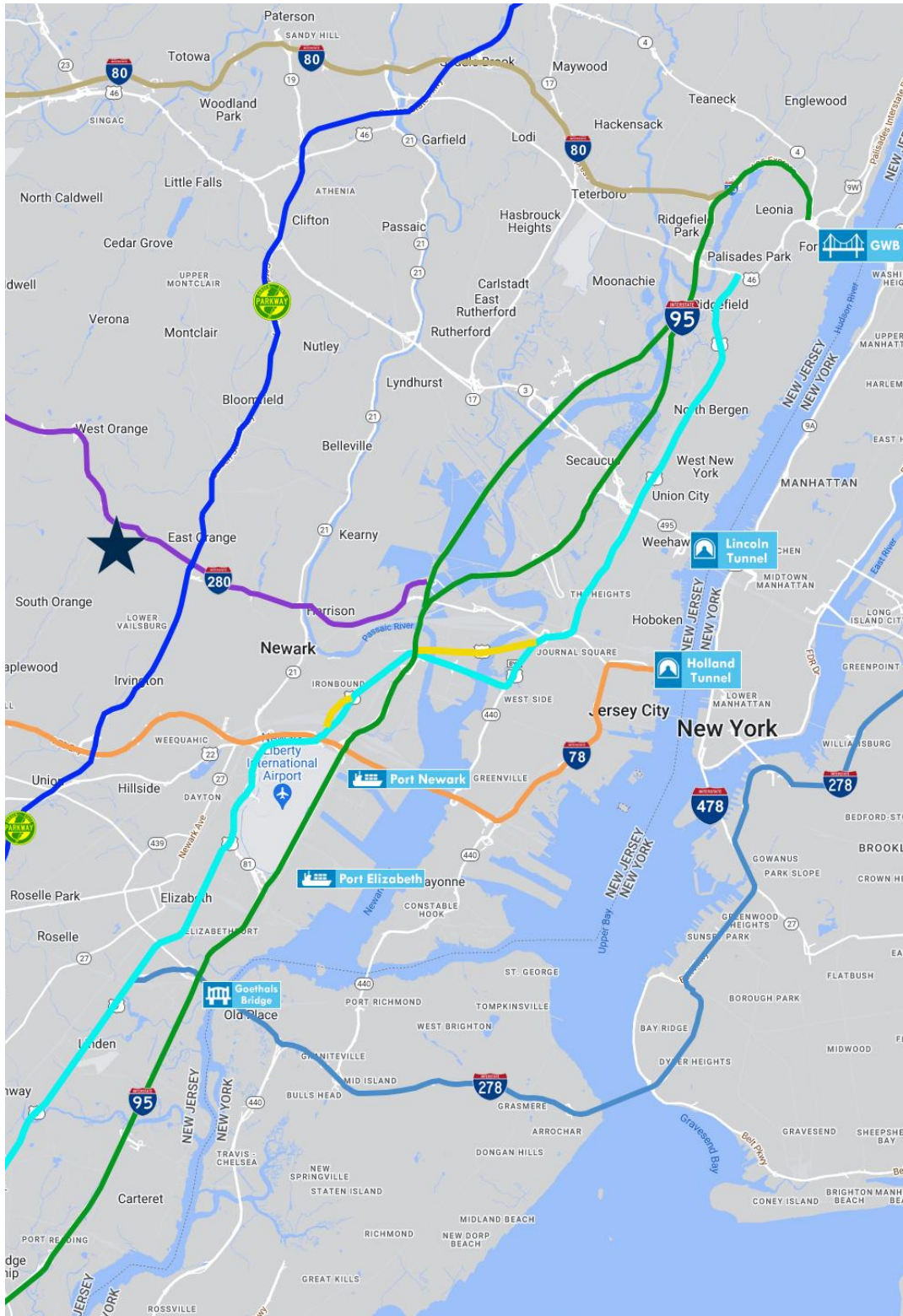
For additional property information or to arrange an inspection, please contact the exclusive brokers:

Jason M. Crimmins, CCIM, SIOR, Chief Executive Officer, 973.379.6644 x 122, jmcrimmins@blauberg.com

Alessandro (Alex) Conte, CCIM, SIOR, President, 973.379.6644 x 131, aconte@blauberg.com

Peter J. Murano, Jr., Managing Executive Director, 973.379.6644 x 114, pjmurano@blauberg.com

Nicholas Bio, Associate, 973.379.6644 x 233, nbio@blauberg.com



ACCESSIBILITY



0.8 MI
I-280



1.7 MI
Route 10



3.5 MI
GSP Exit 145



6.9 MI
I-78



8.5 MI
I-95 Exit 15W



11.2 MI
US Hwy 1 & 9



13.9 MI
Newark Airport

For additional property information or to arrange an inspection, please contact the exclusive brokers:

Jason M. Crimmins, CCIM, SIOR, Chief Executive Officer, 973.379.6644 x 122, jmcrimmins@blauberg.com

Alessandro (Alex) Conte, CCIM, SIOR, President, 973.379.6644 x 131, aconte@blauberg.com

Peter J. Murano, Jr., Managing Executive Director, 973.379.6644 x 114, pjmurano@blauberg.com

Nicholas Bio, Associate, 973.379.6644 x 233, nbio@blauberg.com

The information contained herein has been obtained from sources considered to be reliable, but no guarantee of its accuracy is made by this company. In addition, no representation is made respecting zoning, condition of title, dimensions, or any matters of a legal or environmental nature. Such matters should be referred to legal counsel for determination. Terms and conditions are subject to change without prior notice. Subject to errors and omissions.