



Subject Property

Not to scale

McDonald's

Superior Auto Mall of Chenoa
W Cemetery Ave

Chenoa Locker
Chenoa
Chenoa

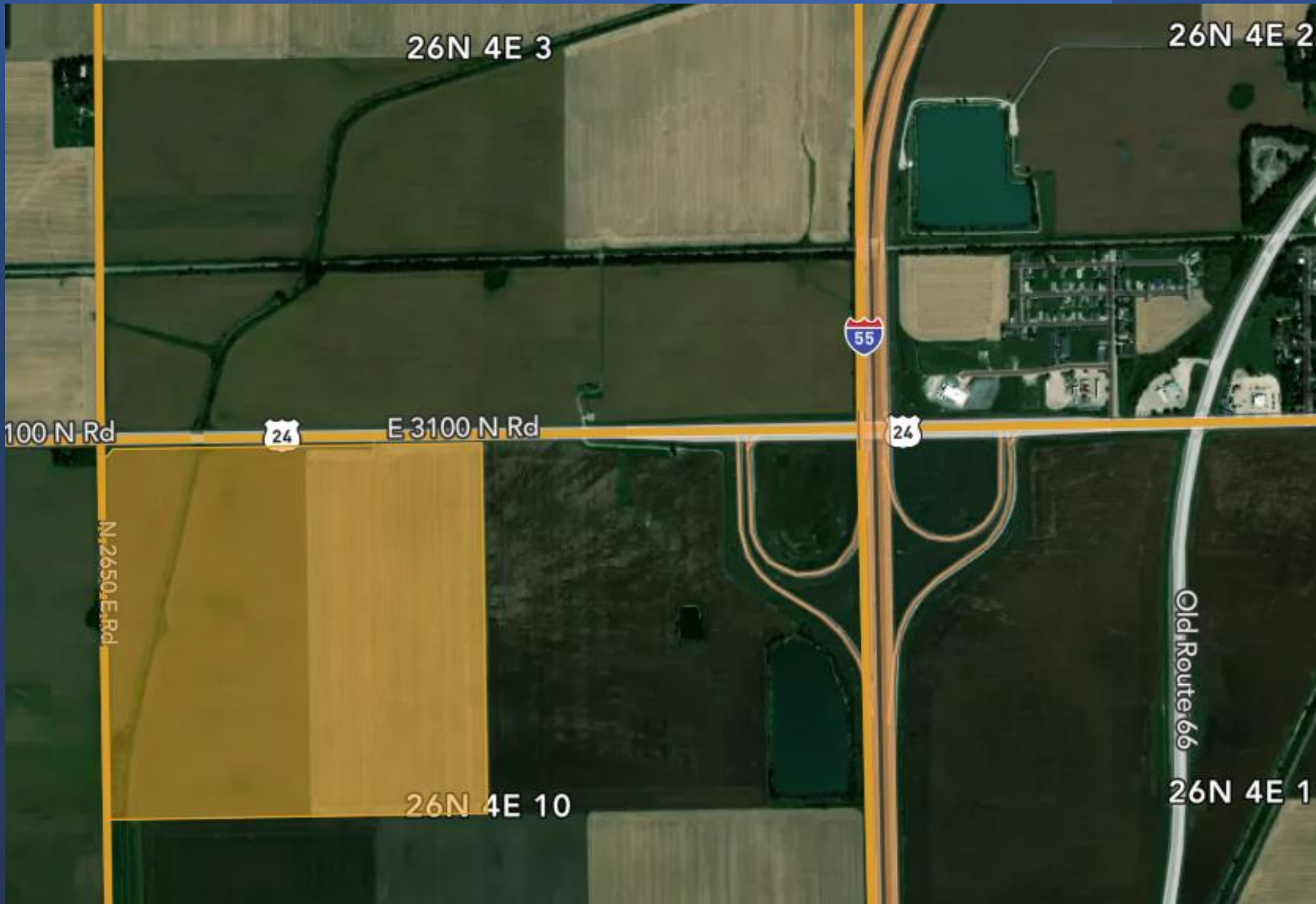
19

24

55

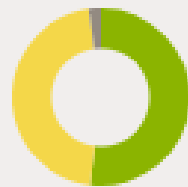
Central Expy



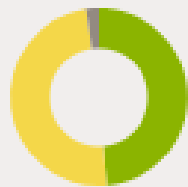


All fields

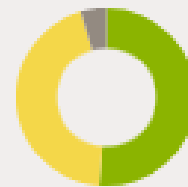
159 ac.



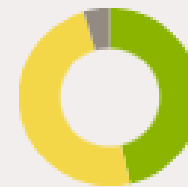
2020



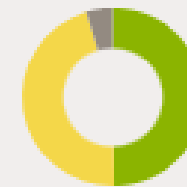
2019



2018



2017



2016

■	Soybeans	52.0%	48.6%	51.3%	46.4%	49.7%
■	Corn	45.9%	49.1%	44.2%	49.1%	45.7%
■	Other	2.2%	2.3%	4.5%	4.5%	4.6%

Source: NASS Cropland Data Layer

AVG PI
123.0

COUNTY AVG
130.7

Source: NRCS Soil Survey

All fields 159 ac.

SOIL CODE	SOIL DESCRIPTION	ACRES	PERCENTAGE OF FIELD	SOIL CLASS	AVG PI
232A	Ashkum silty clay loam, 0 to 2 percent slopes	84.96	53.5%	2	127.0
223B2	Varna silt loam, 2 to 4 percent slopes, eroded	41.36	26.1%	2	110.0
614B	Chenoa silty clay loam, 2 to 5 percent slopes	29.66	18.7%	1	129.0
148B2	Proctor silt loam, 2 to 5 percent slopes, eroded	2.74	1.7%	2	128.0
		158.71			123.0

