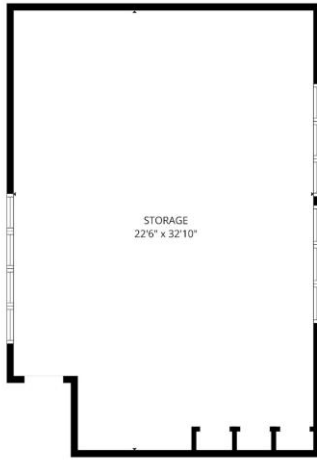


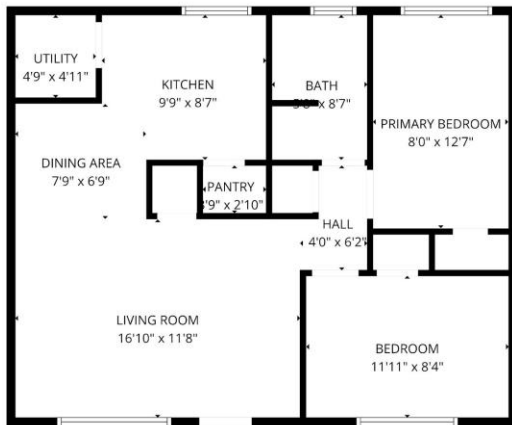
1002 S Shoshone Street, Boise ID 83705

Note: All 4 units are the same/mirroring units.



5th "unit" is a storage area

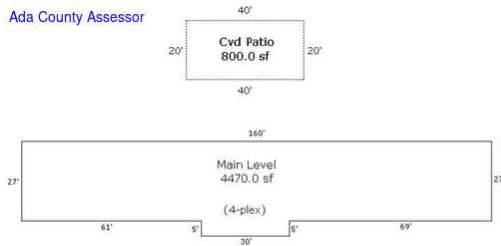
FLOOR PLAN CREATED BY CLERKUSA APP. MEASUREMENTS DEEMED HIGHLY RELIABLE BUT NOT GUARANTEED.



Floor plan for the 4 units

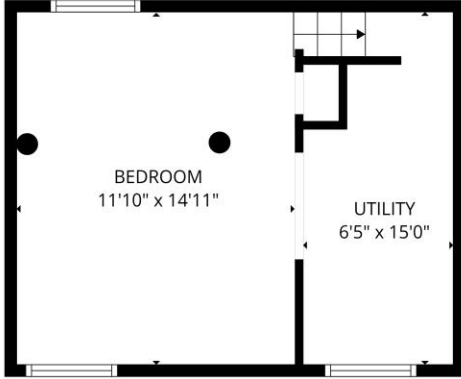
FLOOR PLAN CREATED BY CLERKUSA APP. MEASUREMENTS DEEMED HIGHLY RELIABLE BUT NOT GUARANTEED.

Ada County Assessor

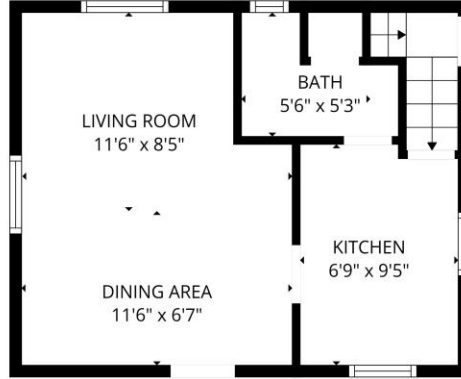


R2120000245
Drawn from packet

2902 W Edson Street, Boise ID 83705

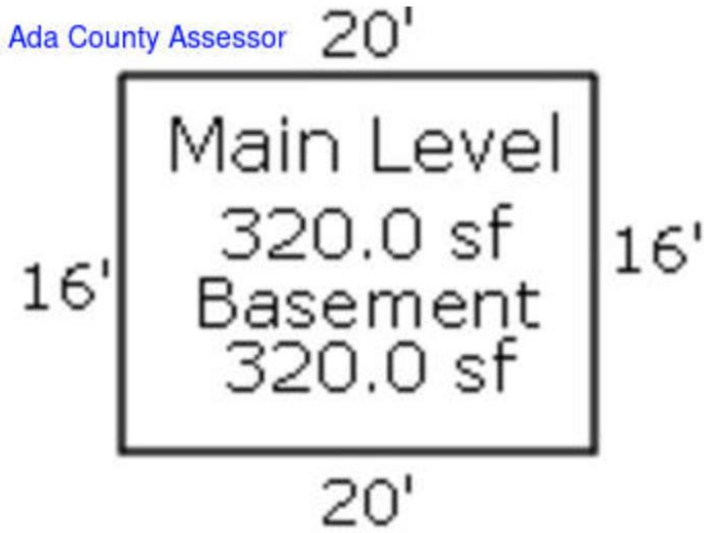


Basement

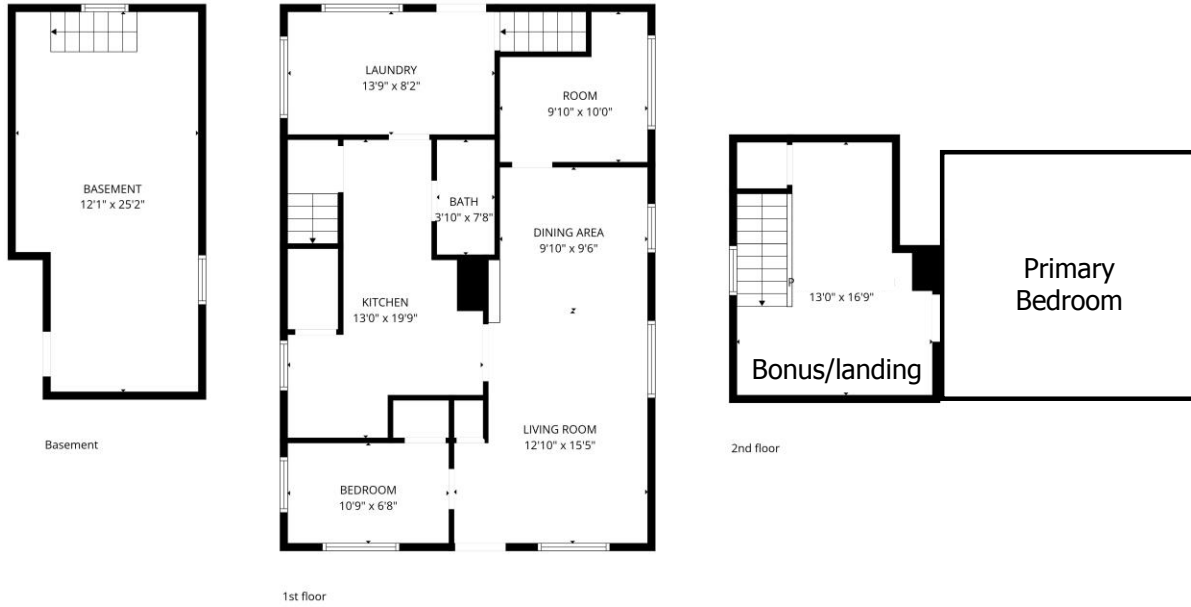


1st floor

FLOOR PLAN CREATED BY CUBICASA APP. MEASUREMENTS DEEMED HIGHLY RELIABLE BUT NOT GUARANTEED.

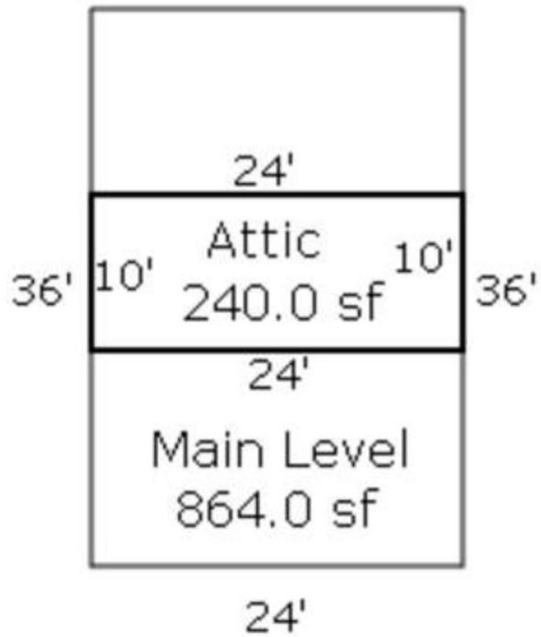


1006 S Shoshone Street, Boise ID 83705



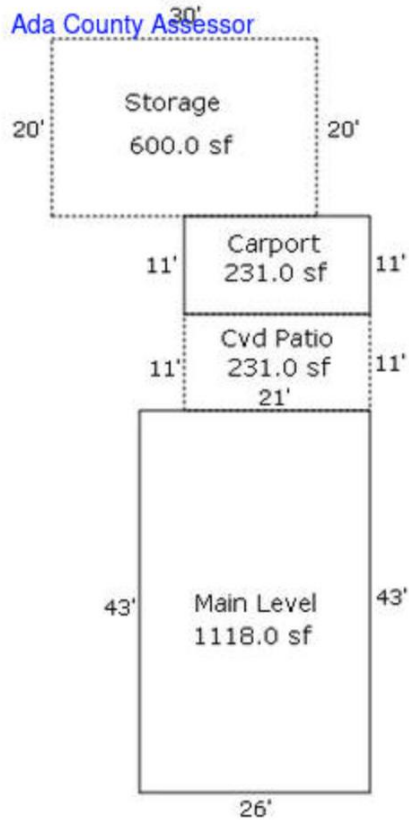
FLOOR PLAN CREATED BY CUBICASA APP. MEASUREMENTS DEEMED HIGHLY RELIABLE BUT NOT GUARANTEED.

Ada County Assessor 24'

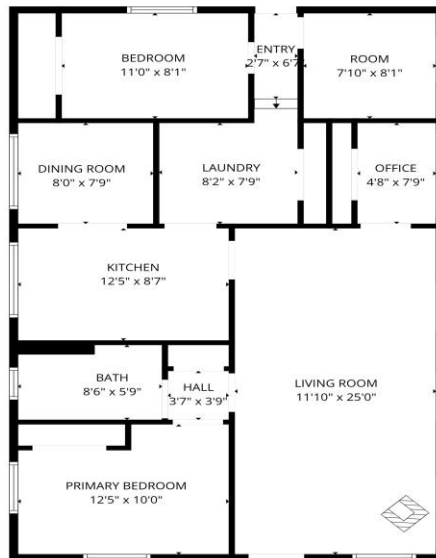


1000 S Shoshone Street, Boise ID 83705

Ada County Assessor



"Two bedroom" w/ 2
offices/extra spaces.



FLOOR PLAN CREATED BY CUBICASA APP. MEASUREMENTS DEEMED HIGHLY RELIABLE BUT NOT GUARANTEED.