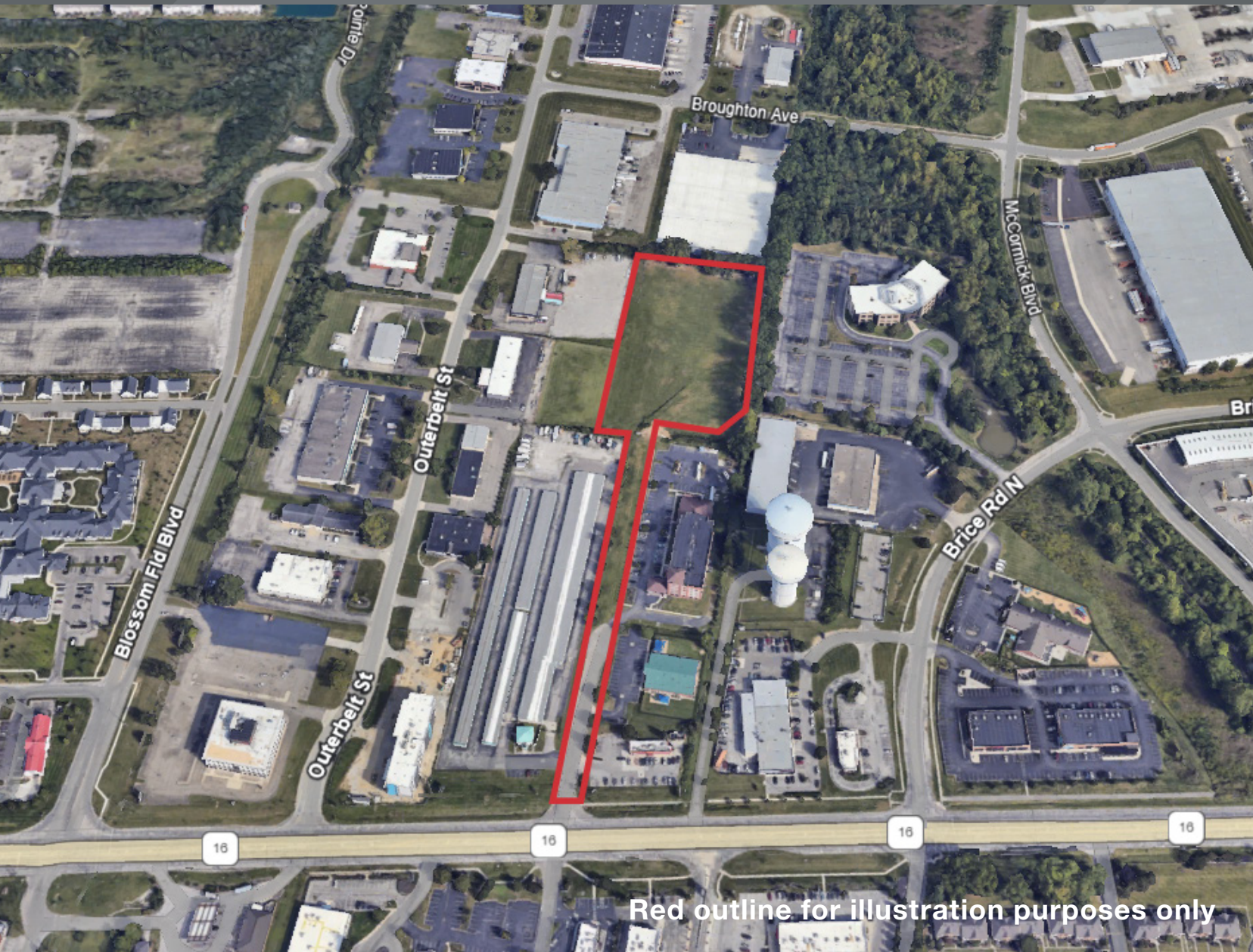


# 150 CHRIS PERRY LANE

Columbus, OH 43213



**±5 ACRES INDUSTRIAL LAND FOR SALE**



## Contact Information:

Haileigh Stanton  
614.629.5266 • [hstanton@ohioequities.com](mailto:hstanton@ohioequities.com)

Joe Menninger, CCIM  
614.629.5262 • [jmenninger@ohioequities.com](mailto:jmenninger@ohioequities.com)

# PROPERTY OVERVIEW



NAI Ohio Equities is pleased to present 150 Chris Perry Lane, this 5-acre industrial site offers an excellent opportunity for custom development with ample yard space. Utilities are available in the immediate area, and the property is conveniently located just off the East Broad Street industrial corridor. It provides quick access to I-270 and is less than ten miles from John Glenn International Airport. Surrounded by established industrial users, the site is positioned within a high-growth East Columbus industrial submarket, making it ideal for businesses seeking connectivity and expansion potential.

## Address

150 Chris Perry Lane  
Columbus, OH 43213

## Price

Negotiable

## Acreage

5 Acres

## Zoning

LM

## Location

East side of Columbus;  
Directly off of E Broad St

## Highest and Best Use

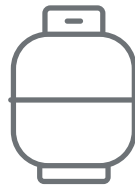
Truck Terminals,  
Warehouse/Distribution,  
Fleet Operations; Flexible  
Site Planning

## Parcel ID

520-295661-00



[AEP Ohio](#)



[Columbia Gas](#)



[Columbus Division of  
Water, Sewage and  
Drainage](#)



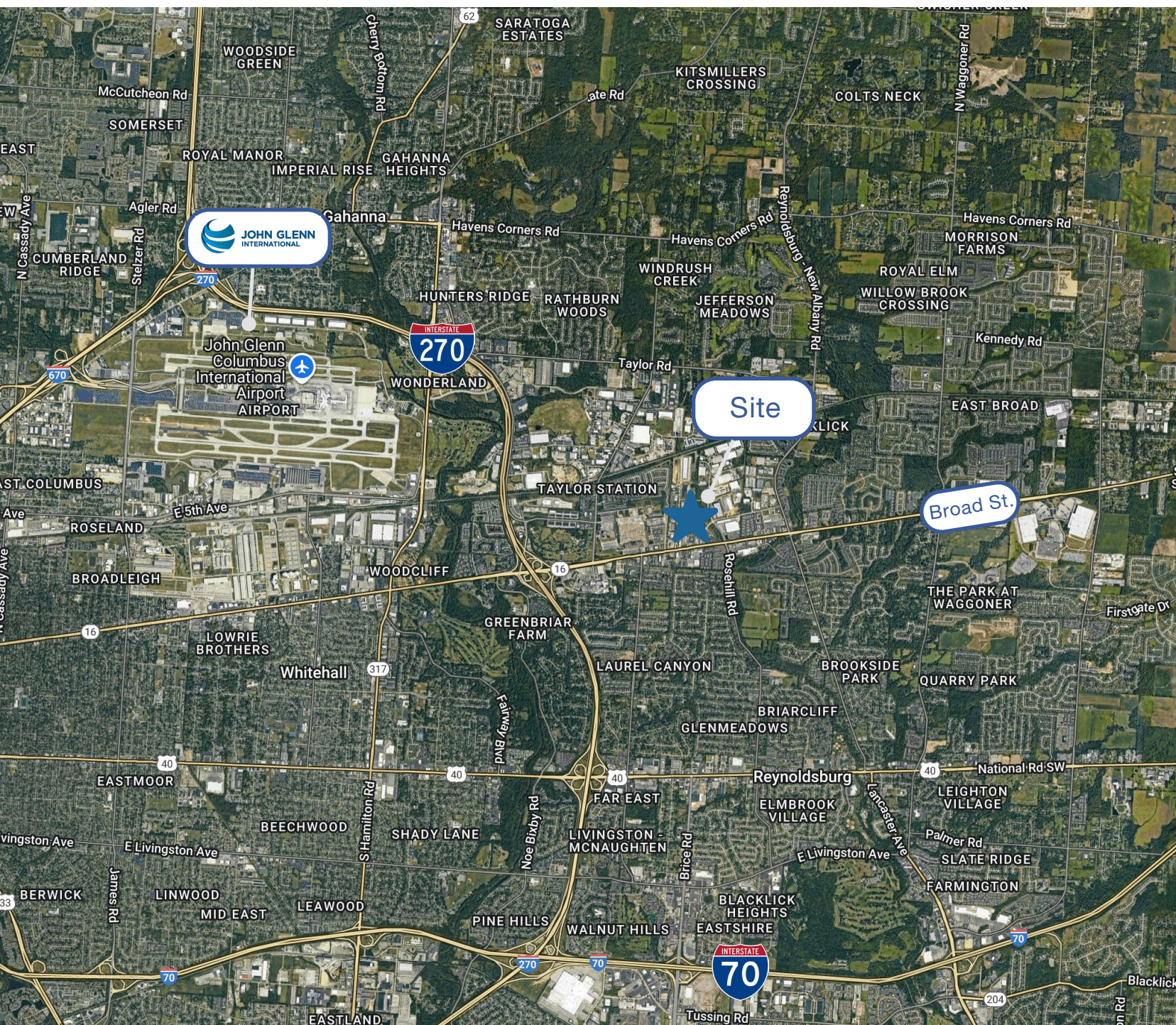
## Contact Information:

Haileigh Stanton  
614.629.5266 • [hstanton@ohioequities.com](mailto:hstanton@ohioequities.com)

Joe Menninger, CCIM  
614.629.5262 • [jmenninger@ohioequities.com](mailto:jmenninger@ohioequities.com)



# Additional Photographs



**NAI** Ohio Equities

## Contact Information:

Haileigh Stanton  
614.629.5266 • [hstanton@ohioequities.com](mailto:hstanton@ohioequities.com)

Joe Menninger, CCIM  
614.629.5262 • [jmenninger@ohioequities.com](mailto:jmenninger@ohioequities.com)



# 150 CHRIS PERRY LANE

## COLUMBUS, OH 43213



**Haileigh Stanton**

Associate

[hstanton@ohioequities.com](mailto:hstanton@ohioequities.com)

614.629.5266



**Joe Menninger, CCIM**

Vice President

[jmenninger@ohioequities.com](mailto:jmenninger@ohioequities.com)

614.629.5262



**NAI Ohio Equities**

605 S. FRONT STREET, SUITE 200

COLUMBUS OHIO 43215

[OHIOEQUITIES.COM](http://OHIOEQUITIES.COM)

614 224 2400

Any information regarding real property contained in this communication has been obtained by NAI Ohio Equities from a source or sources believed to be reliable. However, NAI Ohio Equities cannot guarantee its accuracy or completeness, and suggests that such information be verified by the recipient of this communication through its own due diligence, prior to execution of any binding contractual decision for operational, sale or lease of the property described herein.