

# 23771 NE State Route 3

Belfair, WA 98528

\$4,000/month, NNN



## Property Details

- + Total Property: ±24,830
- + Building Size: ±2,500 SF
- + Shop Size: ±1,280
- + Zoning: MU - Mixed Use, Mason County
- + Lease Rate: \$4,000/month, NNN
- + Fully paved
- + 2 Roll-Up Doors
- + 2 Lifts
- + 2 Bathrooms

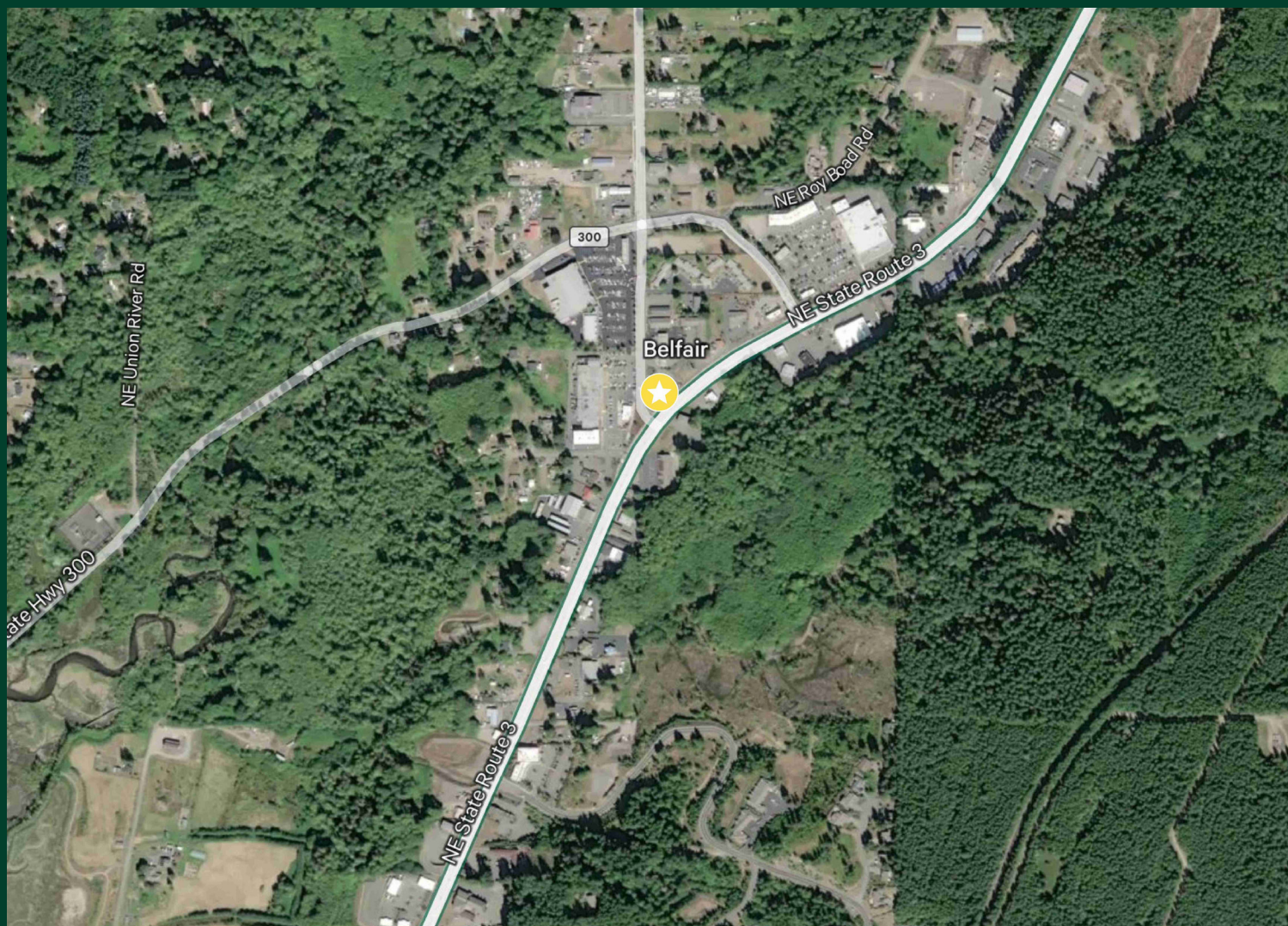


23771 NE State Route 3

Belfair, WA 98528

For Lease

## Aerial Map



## Contact Us

**Leon Titus III**

Associate

+1 253 596 0042

[leon.titus@cbre.com](mailto:leon.titus@cbre.com)

© 2025 CBRE, Inc. All rights reserved. This information has been obtained from sources believed reliable, but has not been verified for accuracy or completeness. You should conduct a careful, independent investigation of the property and verify all information. Any reliance on this information is solely at your own risk. CBRE and the CBRE logo are service marks of CBRE, Inc. All other marks displayed on this document are the property of their respective owners, and the use of such logos does not imply any affiliation with or endorsement of CBRE. Photos herein are the property of their respective owners. Use of these images without the express written consent of the owner is prohibited.

**CBRE**