

# COCCA DEVELOPMENT

**VACANT LAND AVAILABLE FOR BTS**

**MAHONING AVENUE**

LAKE MILTON, OH 44412



- Plot is located near the corner of Mahoning Avenue & Route 534 (South Princeton Road) near Lakers Food Mart
- Less than half a mile East of the Milton Township Police Department
- Traffic light at intersection allows for easy ingress and egress

**AVAILABLE SUITE AREA—\$/square foot NNN:**

Approximately 18 Acres  
WILL BUILD TO SUIT

NNN: Base rent plus prorata share of Real Estate Taxes, Insurance, and Common Area expenses, including but not limited to snow removal, lawn care, and parking lot maintenance. Tenant pays separately metered utilities for gas, electric, water, sewer, & trash removal.

**CALL 330-729-1010 FOR MORE INFORMATION**

[www.coccaddevelopment.com](http://www.coccaddevelopment.com)

Google

Lakers Food Mart

5k

5k

7k

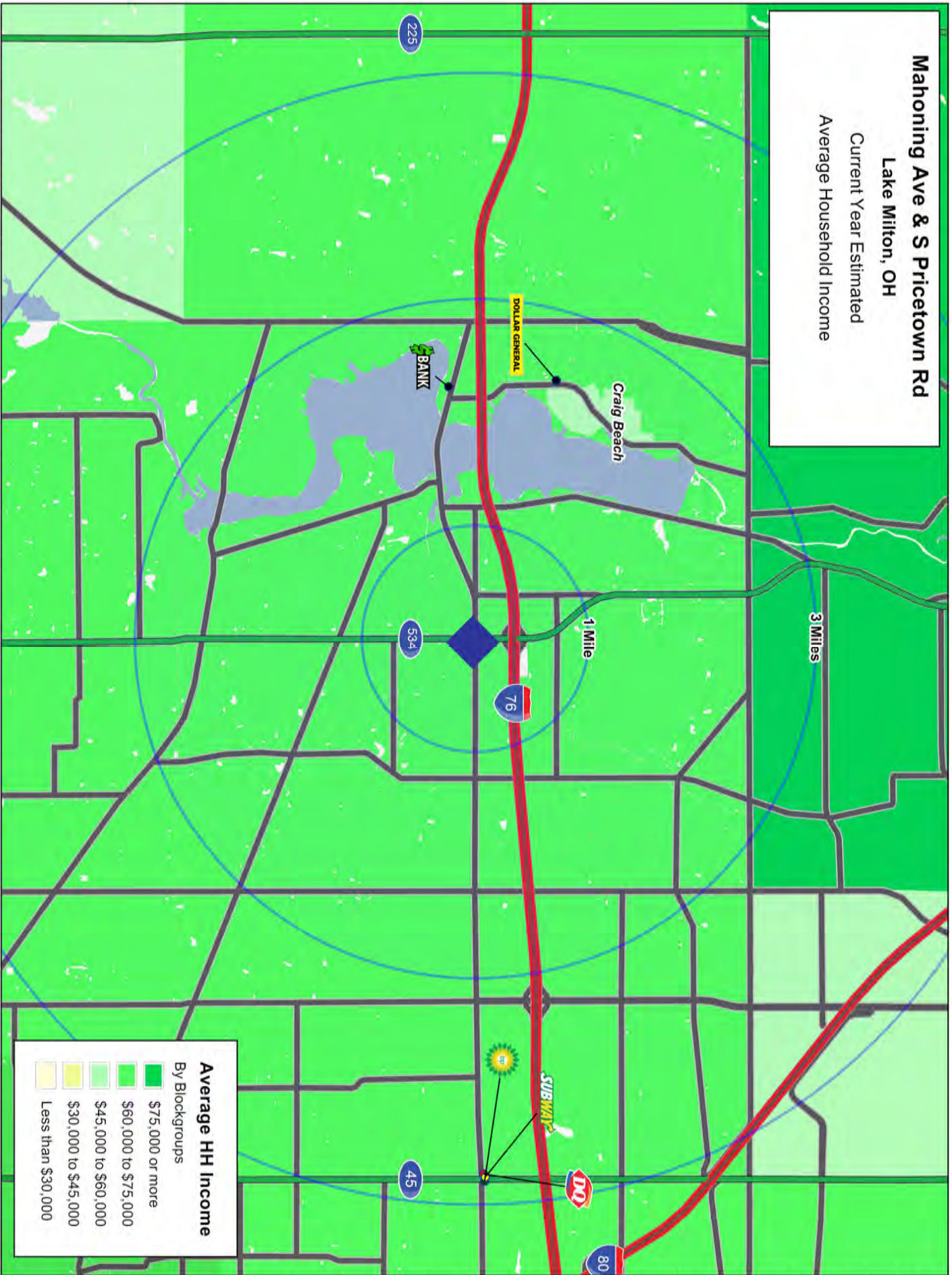
SITE

SUNOCO

Imagery ©2016, DigitalGlobe, State of Ohio / OSIP, U.S. Geological Survey, USDA Farm Service Agency

This map was produced using data from private and government sources deemed to be reliable. The information herein is provided without representation or warranty.

**Mahoning Ave & S Pricetown Rd**  
 Lake Milton, OH  
 Current Year Estimated  
 Average Household Income



**Average HH Income**  
 By Blockgroups

- \$75,000 or more
- \$60,000 to \$75,000
- \$45,000 to \$60,000
- \$30,000 to \$45,000
- Less than \$30,000

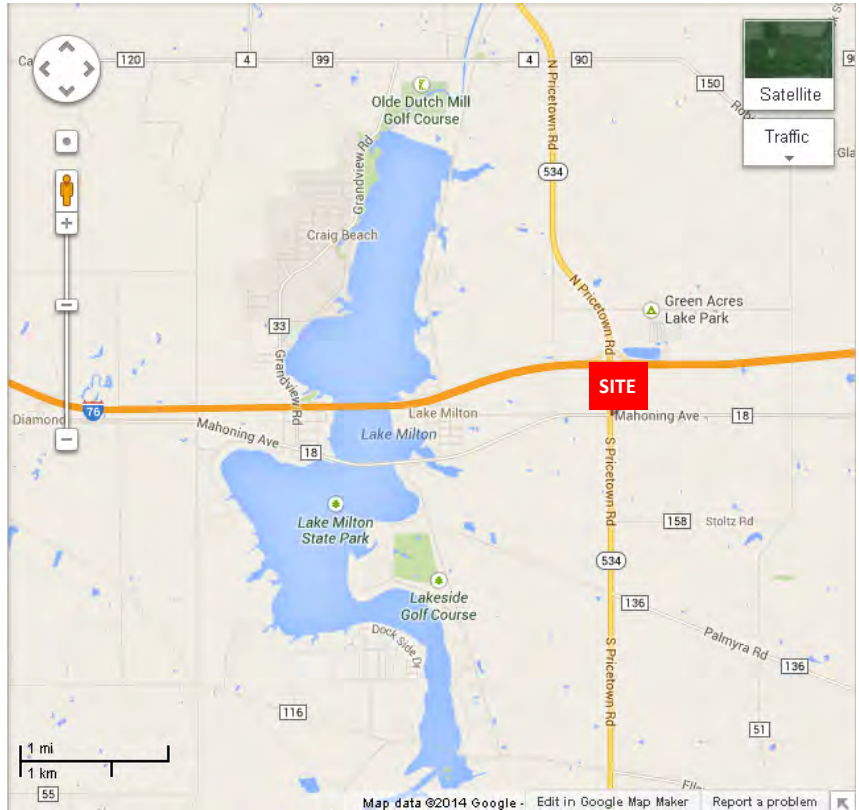
This map was produced using data from private and government sources deemed to be reliable. The information herein is provided without representation or warranty.

# Mahoning Avenue

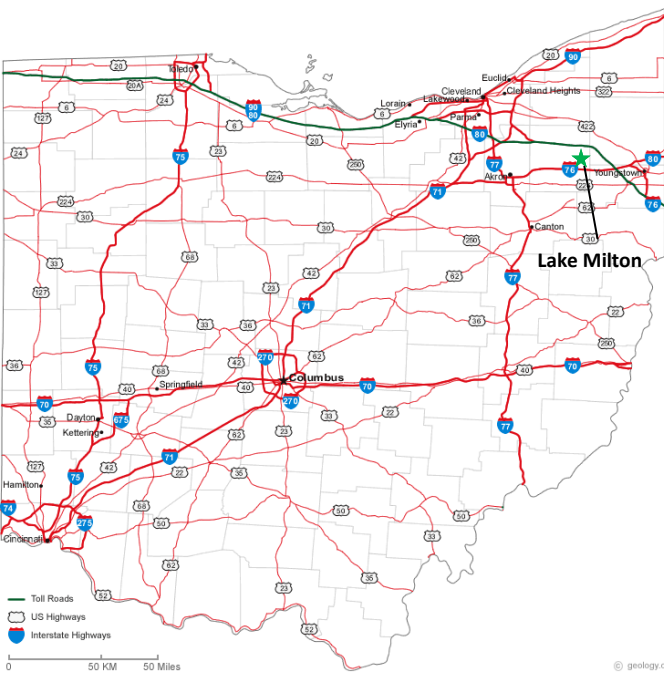
# Lake Milton, OH 44412

The site is located on Mahoning Avenue near the corner of Route 534 (South Pricetown Road).

It is just 1.5 miles South of 76; 10 miles West of Austintown; 17.6 miles West of Youngstown, and 33 miles East of Akron.



Located along the Northwest corner of Mahoning County, it is bordered by Trumbull County to the North and Portage County to the West, making it an easy trip for recreation in this tri-county area.



The average daily traffic count on Mahoning Avenue in front of the site is approximately 7,000 with approximately 5,000 cars passing by on Route 534.

# COCCA DEVELOPMENT, LTD

Mahoning Avenue

Lake Milton, OH 44429

## AT A GLANCE

- ◆ Lake Milton is located in Central Milton Township in Mahoning County; it is unincorporated but has its own post office, which has been in operation since 1942.
- ◆ Lake Milton, a 1,685-acre water reservoir formed by an impounded dam constructed in 1913 and offers the best in water-related recreation, such as boating, swimming and fishing.
- ◆ The city offers 1,171 acres of scenic shoreline providing a habitat for waterfowls and shorebirds for visitors to enjoy as well as camping and picnic facilities.
- ◆ Lake Milton is Ohio's 72nd State Park. It was officially dedicated in June of 1988.

# GRAPHIC PROFILE

2000-2010 Census, 2014 Estimates with 2019 Projections

Calculated using Proportional Block Groups

Lat/Lon: 41.0994/-80.9487

RGRAP3

## Mahoning Ave & S Pricetown Rd

### Lake Milton, OH

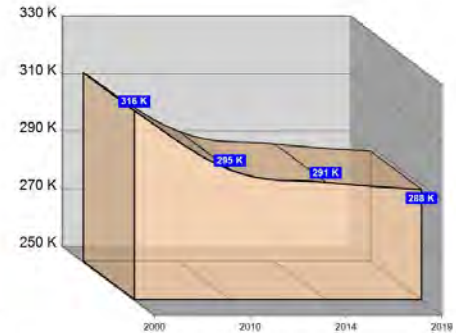
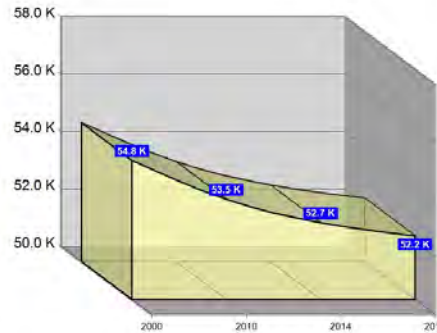
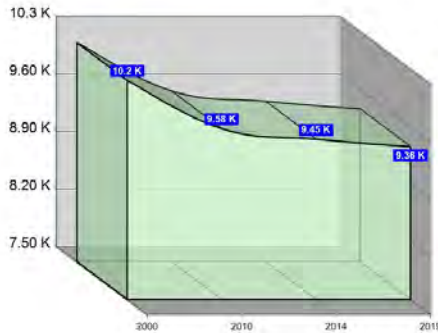
5 Miles

10 Miles

15 Miles

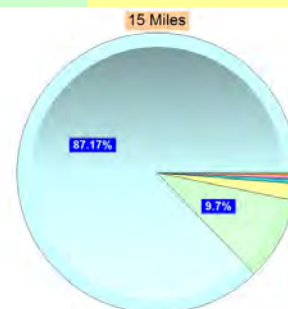
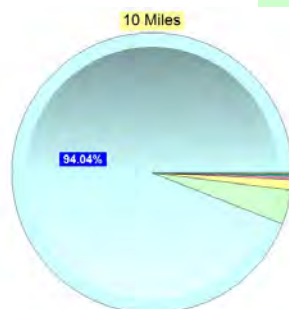
#### Population

Estimated Population (2014)	9,450	52,665	290,806
Projected Population (2019)	9,359	52,211	288,279
Census Population (2010)	9,579	53,483	295,138
Census Population (2000)	10,167	54,829	315,726
Projected Annual Growth (2014-2019)	-92 -0.2%	-455 -0.2%	-2,528 -0.2%
Historical Annual Growth (2010-2014)	-129 -1.5%	-818 -0.6%	-4,332 -1.7%
Historical Annual Growth (2000-2010)	-588 -0.6%	-1,346 -0.2%	-20,588 -0.7%
Estimated Population Density (2014)	120 <i>psm</i>	168 <i>psm</i>	412 <i>psm</i>
Trade Area Size	78.5 <i>sq mi</i>	314.0 <i>sq mi</i>	706.6 <i>sq mi</i>



#### Race and Ethnicity (2014)

Not Hispanic or Latino Population	9,348 98.9%	51,897 98.5%	284,139 97.7%
White	9,164 98.0%	49,009 94.4%	249,635 87.9%
Black or African American	33 0.4%	2,058 4.0%	27,517 9.7%
American Indian or Alaska Native	22 0.2%	70 0.1%	493 0.2%
Asian	15 0.2%	178 0.3%	1,473 0.5%
Hawaiian or Pacific Islander	- -	5 -	33 -
Other Race	7 0.1%	28 0.1%	260 0.1%
Two or More Races	107 1.1%	550 1.1%	4,728 1.7%
Hispanic or Latino Population	102 1.1%	768 1.5%	6,668 2.3%
White	72 70.9%	518 67.4%	3,857 57.8%
Black or African American	- 0.4%	37 4.8%	564 8.5%
American Indian or Alaska Native	2 2.3%	10 1.3%	74 1.1%
Asian	- -	1 0.2%	16 0.2%
Hispanic Hawaiian or Pacific Islander	- -	1 0.1%	4 0.1%
Other Race	15 14.2%	114 14.9%	1,340 20.1%
Two or More Races	12 12.2%	86 11.2%	813 12.2%



White Black or African American American Indian or Alaska Native Asian Hawaiian or Pacific Islander Other Race 2+ Races

This report was produced using data from private and government sources deemed to be reliable. The information herein is provided without representation or warranty.

# GRAPHIC PROFILE

2000-2010 Census, 2014 Estimates with 2019 Projections

Calculated using Proportional Block Groups

Lat/Lon: 41.0994/-80.9487

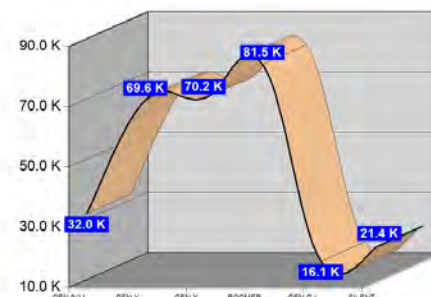
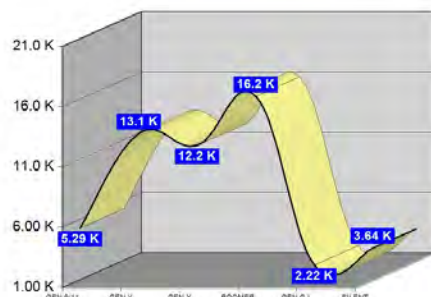
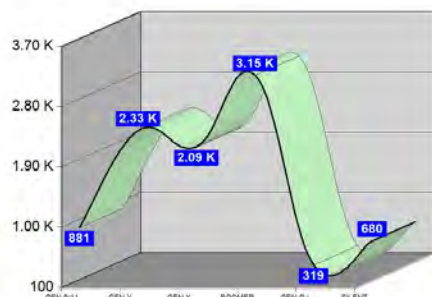
RGRAP3

## Mahoning Ave & S Pricetown Rd Lake Milton, OH

	5 Miles		10 Miles		15 Miles	
<b>Age Distribution (2014)</b>						
Age Under 5 Years	383	4.1%	2,434	4.6%	15,479	5.3%
Age 5 to 9 Years	497	5.3%	2,855	5.4%	16,475	5.7%
Age 10 to 14 Years	578	6.1%	3,331	6.3%	17,981	6.2%
Age 15 to 19 Years	622	6.6%	3,442	6.5%	18,106	6.2%
Age 20 to 24 Years	477	5.0%	2,818	5.4%	17,445	6.0%
Age 25 to 29 Years	408	4.3%	2,564	4.9%	16,619	5.7%
Age 30 to 34 Years	440	4.7%	2,778	5.3%	16,259	5.6%
Age 35 to 39 Years	561	5.9%	3,099	5.9%	16,229	5.6%
Age 40 to 44 Years	636	6.7%	3,550	6.7%	17,814	6.1%
Age 45 to 49 Years	693	7.3%	3,709	7.0%	19,339	6.7%
Age 50 to 54 Years	788	8.3%	4,128	7.8%	21,821	7.5%
Age 55 to 59 Years	851	9.0%	4,477	8.5%	22,573	7.8%
Age 60 to 64 Years	860	9.1%	4,318	8.2%	20,724	7.1%
Age 65 to 69 Years	656	6.9%	3,303	6.3%	16,426	5.6%
Age 70 to 74 Years	433	4.6%	2,243	4.3%	12,271	4.2%
Age 75 to 79 Years	247	2.6%	1,401	2.7%	9,105	3.1%
Age 80 to 84 Years	186	2.0%	1,058	2.0%	7,444	2.6%
Age 85 Years or Over	133	1.4%	1,159	2.2%	8,697	3.0%
Median Age	44.8		43.3		42.0	

	5 Miles		10 Miles		15 Miles	
<b>Generation (2014)</b>						
Generation 9/11 Millennials (Age Under 10 Years)	881	9.3%	5,289	10.0%	31,954	11.0%
Gen Y to Echo Boomers (Age 10 to 29 Years)	2,086	22.1%	12,155	23.1%	70,151	24.1%
Gen Xers (Age 30 to 49 Years)	2,330	24.7%	13,135	24.9%	69,641	23.9%
Baby Boomers (Age 50 to 69 Years)	3,155	33.4%	16,226	30.8%	81,543	28.0%
Silent Generation (Age 70 to 79 Years)	680	7.2%	3,644	6.9%	21,376	7.4%
G.I. Generation (Age 80 Years or Over)	319	3.4%	2,216	4.2%	16,141	5.6%

This report was produced using data from private and government sources deemed to be reliable. The information herein is provided without representation or warranty.



# GRAPHIC PROFILE

2000-2010 Census, 2014 Estimates with 2019 Projections

Calculated using Proportional Block Groups

Lat/Lon: 41.0994/-80.9487

RGRAP3

## Mahoning Ave & S Pricetown Rd Lake Milton, OH

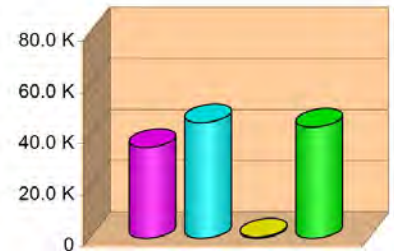
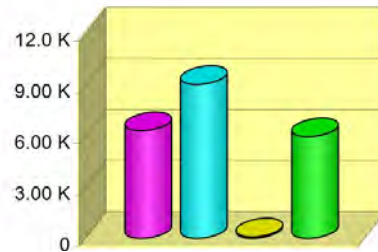
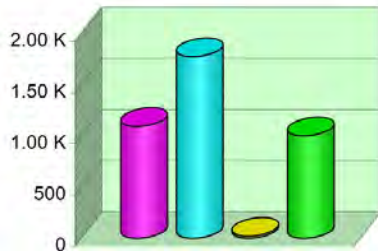
5 Miles

10 Miles

15 Miles

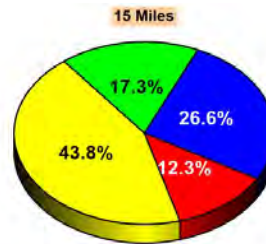
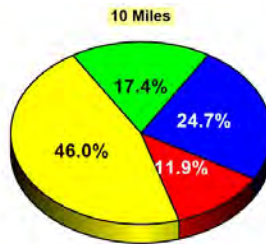
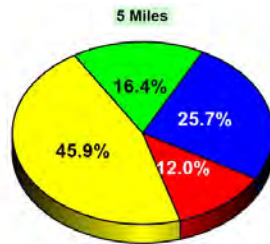
### Household Type (2014)

	5 Miles	10 Miles	15 Miles
Total Households	3,892	21,373	124,657
Family Households	2,869 45.6%	15,332 42.2%	80,702 36.3%
Family Households with Children	1,094 38.1%	6,311 41.2%	35,491 44.0%
Family Households No Children	1,775 61.9%	9,022 58.8%	45,211 56.0%
Non-Family Households	1,022 45.6%	6,041 42.2%	43,955 36.3%
Non-Family Households with Children	21 2.0%	83 1.4%	489 1.1%
Non-Family Households No Children	1,002 98.0%	5,958 98.6%	43,466 98.9%



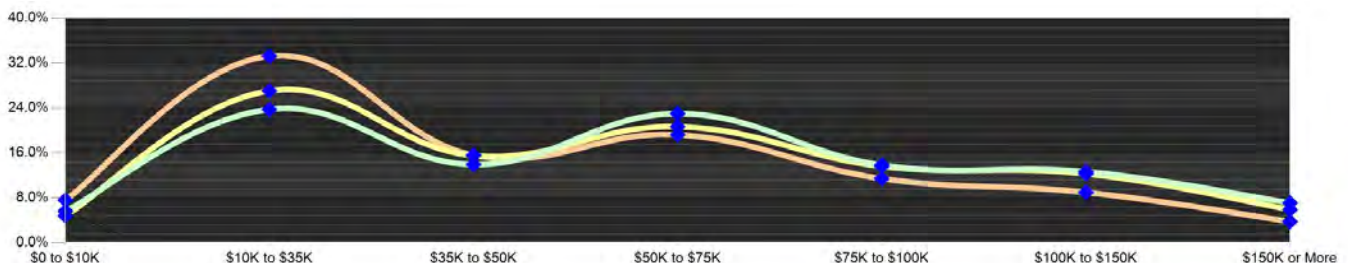
### Education Attainment (2014)

	5 Miles	10 Miles	15 Miles
Elementary or Some High School	825 12.0%	4,403 11.9%	24,645 12.3%
High School Graduate	3,152 45.9%	16,953 46.0%	88,012 43.8%
Some College or Associate Degree	1,769 25.7%	9,114 24.7%	53,438 26.6%
Bachelor or Graduate Degree	1,124 16.4%	6,406 17.4%	34,730 17.3%



### Household Income (2014)

	5 Miles	10 Miles	15 Miles
Estimated Average Household Income	\$64,296	\$60,620	\$50,827
Estimated Median Household Income	\$51,287	\$49,866	\$42,160
HH Income Under \$10,000	219 5.6%	1,030 4.8%	9,507 7.6%
HH Income \$10,000 to \$34,999	925 23.8%	5,787 27.1%	41,485 33.3%
HH Income \$35,000 to \$49,999	543 14.0%	3,323 15.5%	19,464 15.6%
HH Income \$50,000 to \$74,999	895 23.0%	4,425 20.7%	23,988 19.2%
HH Income \$75,000 to \$99,999	493 12.7%	2,629 12.3%	11,207 9.0%
HH Income \$100,000 to \$149,999	493 12.7%	2,629 12.3%	11,207 9.0%
HH Income \$150,000 or More	277 7.1%	1,265 5.9%	4,740 3.8%



This report was produced using data from private and government sources deemed to be reliable. The information herein is provided without representation or warranty.



# EXPANDED PROFILE

2000-2010 Census, 2014 Estimates with 2019 Projections

Calculated using Proportional Block Groups

Lat/Lon: 41.0994/-80.9487

RF5

## Mahoning Ave & S Pricetown Rd

### Lake Milton, OH

#### Population

	5 Miles	10 Miles	15 Miles
Estimated Population (2014)	9,450	52,665	290,806
Projected Population (2019)	9,359	52,211	288,279
Census Population (2010)	9,579	53,483	295,138
Census Population (2000)	10,167	54,829	315,726
Projected Annual Growth (2014 to 2019)	-92 -0.2%	-455 -0.2%	-2,528 -0.2%
Historical Annual Growth (2010 to 2014)	-129 -0.3%	-818 -0.4%	-4,332 -0.4%
Historical Annual Growth (2000 to 2010)	-588 -0.6%	-1,346 -0.2%	-20,588 -0.7%
Estimated Population Density (2014)	120 <i>psm</i>	168 <i>psm</i>	412 <i>psm</i>
Trade Area Size	78.49 <i>sq mi</i>	314.02 <i>sq mi</i>	706.57 <i>sq mi</i>

#### Households

Estimated Households (2014)	3,892	21,373	124,657
Projected Households (2019)	3,971	21,835	127,049
Census Households (2010)	3,815	20,934	122,277
Census Households (2000)	3,793	20,357	126,156
Estimated Households with Children (2014)	1,115 28.6%	6,394 29.9%	35,980 28.9%
Estimated Average Household Size (2014)	2.42	2.41	2.29

#### Average Household Income

Estimated Average Household Income (2014)	\$67,674	\$64,718	\$54,663
Projected Average Household Income (2019)	\$73,328	\$70,244	\$59,290
Estimated Average Family Income (2014)	\$77,920	\$74,437	\$64,967

#### Median Household Income

Estimated Median Household Income (2014)	\$56,509	\$54,450	\$45,538
Projected Median Household Income (2019)	\$60,910	\$58,968	\$49,366
Estimated Median Family Income (2014)	\$66,160	\$64,388	\$56,726

#### Per Capita Income

Estimated Per Capita Income (2014)	\$27,882	\$26,506	\$23,602
Projected Per Capita Income (2019)	\$31,127	\$29,650	\$26,322
Estimated Per Capita income 5 Year Growth	\$3,245 11.6%	\$3,144 11.9%	\$2,720 11.5%
Estimated Average Household Net Worth (2014)	\$448,971	\$429,596	\$357,149

#### Daytime Demos (2014)

Total Businesses	313	1,829	11,260
Total Employees	4,019	24,889	132,615
Company Headquarter Businesses	1 0.2%	5 0.2%	37 0.3%
Company Headquarter Employees	58 1.4%	810 3.3%	5,832 4.4%
Employee Population per Business	12.8	13.6	11.8
Residential Population per Business	30.2	28.8	25.8

This report was produced using data from private and government sources deemed to be reliable. The information herein is provided without representation or warranty.

# EXPANDED PROFILE

2000-2010 Census, 2014 Estimates with 2019 Projections

Calculated using Proportional Block Groups

Lat/Lon: 41.0994/-80.9487

RF5

## Mahoning Ave & S Pricetown Rd

### Lake Milton, OH

#### Race & Ethnicity

	5 Miles		10 Miles		15 Miles	
White (2014)	9,236	97.7%	49,528	94.0%	253,492	87.2%
Black or African American (2014)	34	0.4%	2,095	4.0%	28,081	9.7%
American Indian or Alaska Native (2014)	24	0.3%	80	0.2%	567	0.2%
Asian (2014)	15	0.2%	179	0.3%	1,489	0.5%
Hawaiian or Pacific Islander (2014)	-	-	6	-	37	-
Other Race (2014)	22	0.2%	142	0.3%	1,600	0.6%
Two or More Races (2014)	120	1.3%	636	1.2%	5,540	1.9%
Not Hispanic or Latino Population (2014)	9,348	98.9%	51,897	98.5%	284,139	97.7%
Hispanic or Latino Population (2014)	102	1.1%	768	1.5%	6,668	2.3%
Not Hispanic or Latino Population (2019)	9,247	98.8%	51,365	98.4%	280,906	97.4%
Hispanic or Latino Population (2019)	112	1.2%	845	1.6%	7,372	2.6%
Not Hispanic or Latino Population (2010)	9,487	99.0%	52,798	98.7%	289,227	98.0%
Hispanic or Latino Population (2010)	92	1.0%	686	1.3%	5,911	2.0%
Not Hispanic or Latino Population (2000)	10,107	99.4%	54,396	99.2%	312,070	98.8%
Hispanic or Latino Population (2000)	61	0.6%	434	0.8%	3,656	1.2%
Projected Hispanic Annual Growth (2014 to 2019)	10	1.9%	77	2.0%	705	2.1%
Historic Hispanic Annual Growth (2000 to 2014)	42	4.9%	335	5.5%	3,012	5.9%

#### Age Distribution (2014)

	5 Miles		10 Miles		15 Miles	
Age Under 5	383	4.1%	2,434	4.6%	15,479	5.3%
Age 5 to 9 Years	497	5.3%	2,855	5.4%	16,475	5.7%
Age 10 to 14 Years	578	6.1%	3,331	6.3%	17,981	6.2%
Age 15 to 19 Years	622	6.6%	3,442	6.5%	18,106	6.2%
Age 20 to 24 Years	477	5.0%	2,818	5.4%	17,445	6.0%
Age 25 to 29 Years	408	4.3%	2,564	4.9%	16,619	5.7%
Age 30 to 34 Years	440	4.7%	2,778	5.3%	16,259	5.6%
Age 35 to 39 Years	561	5.9%	3,099	5.9%	16,229	5.6%
Age 40 to 44 Years	636	6.7%	3,550	6.7%	17,814	6.1%
Age 45 to 49 Years	693	7.3%	3,709	7.0%	19,339	6.7%
Age 50 to 54 Years	788	8.3%	4,128	7.8%	21,821	7.5%
Age 55 to 59 Years	851	9.0%	4,477	8.5%	22,573	7.8%
Age 60 to 64 Years	860	9.1%	4,318	8.2%	20,724	7.1%
Age 65 to 74 Years	1,090	11.5%	5,545	10.5%	28,697	9.9%
Age 75 to 84 Years	433	4.6%	2,459	4.7%	16,549	5.7%
Age 85 Years or Over	133	1.4%	1,159	2.2%	8,697	3.0%
Median Age	44.8		43.3		42.0	

#### Gender Age Distribution (2014)

	5 Miles		10 Miles		15 Miles	
Female Population	4,662	49.3%	26,412	50.2%	150,372	51.7%
Age 0 to 19 Years	965	20.7%	5,816	22.0%	33,152	22.0%
Age 20 to 64 Years	2,832	60.7%	15,651	59.3%	86,152	57.3%
Age 65 Years or Over	865	18.6%	4,945	18.7%	31,067	20.7%
Female Median Age	45.9		44.5		43.7	
Male Population	4,788	50.7%	26,254	49.8%	140,434	48.3%
Age 0 to 19 Years	1,117	23.3%	6,247	23.8%	34,889	24.8%
Age 20 to 64 Years	2,882	60.2%	15,789	60.1%	82,671	58.9%
Age 65 Years or Over	790	16.5%	4,218	16.1%	22,875	16.3%
Male Median Age	43.6		42.0		40.1	

This report was produced using data from private and government sources deemed to be reliable. The information herein is provided without representation or warranty.

# EXPANDED PROFILE

2000-2010 Census, 2014 Estimates with 2019 Projections

Calculated using Proportional Block Groups

Lat/Lon: 41.0994/-80.9487

RF5

Mahoning Ave & S Pricetown Rd Lake Milton, OH	5 Miles		10 Miles		15 Miles	
<b>Household Income Distribution (2014)</b>						
HH Income \$200,000 or More	107	2.8%	471	2.2%	1,780	1.4%
HH Income \$150,000 to \$199,999	170	4.4%	794	3.7%	2,960	2.4%
HH Income \$100,000 to \$149,999	493	12.7%	2,629	12.3%	11,207	9.0%
HH Income \$75,000 to \$99,999	539	13.8%	2,914	13.6%	14,267	11.4%
HH Income \$50,000 to \$74,999	895	23.0%	4,425	20.7%	23,988	19.2%
HH Income \$35,000 to \$49,999	543	14.0%	3,323	15.5%	19,464	15.6%
HH Income \$25,000 to \$34,999	361	9.3%	2,393	11.2%	15,997	12.8%
HH Income \$15,000 to \$24,999	432	11.1%	2,417	11.3%	17,527	14.1%
HH Income Under \$15,000	351	9.0%	2,007	9.4%	17,467	14.0%
HH Income \$35,000 or More	2,748	70.6%	14,557	68.1%	73,666	59.1%
HH Income \$75,000 or More	1,309	33.6%	6,808	31.9%	30,214	24.2%
<b>Housing (2014)</b>						
Total Housing Units	4,458		23,449		137,495	
Housing Units Occupied	3,892	87.3%	21,373	91.1%	124,657	90.7%
Housing Units Owner-Occupied	3,260	83.8%	17,301	80.9%	87,736	70.4%
Housing Units, Renter-Occupied	631	16.2%	4,072	19.1%	36,921	29.6%
Housing Units, Vacant	566	12.7%	2,075	8.9%	12,838	9.3%
<b>Marital Status (2014)</b>						
Never Married	1,758	22.0%	11,344	25.8%	68,377	28.4%
Currently Married	4,317	54.0%	22,622	51.4%	110,813	46.0%
Separated	341	4.3%	1,393	3.2%	8,217	3.4%
Widowed	566	7.1%	3,151	7.2%	20,456	8.5%
Divorced	1,010	12.6%	5,535	12.6%	33,009	13.7%
<b>Household Type (2014)</b>						
Population Family	7,994	84.6%	43,597	82.8%	229,325	78.9%
Population Non-Family	1,430	15.1%	7,997	15.2%	56,377	19.4%
Population Group Quarters	26	0.3%	1,072	2.0%	5,104	1.8%
Family Households	2,869	73.7%	15,332	71.7%	80,702	64.7%
Non-Family Households	1,022	26.3%	6,041	28.3%	43,955	35.3%
Married Couple with Children	783	18.1%	4,402	19.5%	20,714	18.7%
Average Family Household Size	2.8		2.8		2.8	
<b>Household Size (2014)</b>						
1 Person Households	842	21.6%	5,106	23.9%	37,728	30.3%
2 Person Households	1,583	40.7%	8,025	37.5%	42,980	34.5%
3 Person Households	636	16.3%	3,512	16.4%	19,430	15.6%
4 Person Households	495	12.7%	2,860	13.4%	14,531	11.7%
5 Person Households	222	5.7%	1,256	5.9%	6,540	5.2%
6 or More Person Households	114	2.9%	614	2.9%	3,449	2.8%
<b>Household Vehicles (2014)</b>						
Households with 0 Vehicles Available	95	2.4%	914	4.3%	9,137	7.3%
Households with 1 Vehicles Available	1,014	26.1%	6,195	29.0%	45,754	36.7%
Households with 2 or More Vehicles Available	2,783	71.5%	14,265	66.7%	69,766	56.0%
Total Vehicles Available	8,267		42,840		217,694	
Average Vehicles Per Household	2.1		2.0		1.7	

This report was produced using data from private and government sources deemed to be reliable. The information herein is provided without representation or warranty.

# EXPANDED PROFILE

2000-2010 Census, 2014 Estimates with 2019 Projections

Calculated using Proportional Block Groups

Lat/Lon: 41.0994/-80.9487

RF5

## Mahoning Ave & S Pricetown Rd

### Lake Milton, OH

#### Labor Force (2014)

	5 Miles	10 Miles	15 Miles
Estimated Labor Population Age 16 Years or Over	7,846	42,327	232,327
Estimated Civilian Employed	4,525 57.7%	23,758 56.1%	127,346 54.8%
Estimated Civilian Unemployed	369 4.7%	1,808 4.3%	10,107 4.4%
Estimated in Armed Forces	- -	25 0.1%	123 0.1%
Estimated Not in Labor Force	2,951 37.6%	16,735 39.5%	94,751 40.8%
Unemployment Rate	4.7%	4.3%	4.4%

#### Occupation (2010)

	5 Miles	10 Miles	15 Miles
Occupation: Population Age 16 Years or Over	4,297	23,273	123,568
Management, Business, Financial Operations	483 11.2%	2,504 10.8%	13,004 10.5%
Professional, Related	724 16.9%	4,143 17.8%	21,564 17.5%
Service	697 16.2%	3,905 16.8%	24,181 19.6%
Sales, Office	1,050 24.4%	5,606 24.1%	30,806 24.9%
Farming, Fishing, Forestry	24 0.6%	81 0.3%	337 0.3%
Construct, Extraction, Maintenance	382 8.9%	2,029 8.7%	9,941 8.0%
Production, Transport Material Moving	938 21.8%	5,006 21.5%	23,735 19.2%
White Collar Workers	2,257 52.5%	12,252 52.6%	65,374 52.9%
Blue Collar Workers	2,040 47.5%	11,021 47.4%	58,193 47.1%

#### Consumer Expenditure (2014)

	5 Miles	10 Miles	15 Miles
Total Household Expenditure	\$209 M	\$1.11 B	\$5.76 B
Total Non-Retail Expenditure	\$121 M 57.6%	\$638 M 57.5%	\$3.30 B 57.3%
Total Retail Expenditure	\$88.9 M 42.4%	\$472 M 42.5%	\$2.46 B 42.7%
Apparel	\$10.0 M 4.8%	\$52.9 M 4.8%	\$275 M 4.8%
Contributions	\$7.77 M 3.7%	\$40.7 M 3.7%	\$205 M 3.5%
Education	\$4.86 M 2.3%	\$25.5 M 2.3%	\$129 M 2.2%
Entertainment	\$11.7 M 5.6%	\$62.1 M 5.6%	\$320 M 5.6%
Food and Beverages	\$32.1 M 15.3%	\$171 M 15.4%	\$896 M 15.5%
Furnishings and Equipment	\$9.20 M 4.4%	\$48.6 M 4.4%	\$247 M 4.3%
Gifts	\$5.52 M 2.6%	\$29.1 M 2.6%	\$147 M 2.6%
Health Care	\$12.9 M 6.1%	\$68.7 M 6.2%	\$365 M 6.3%
Household Operations	\$7.47 M 3.6%	\$39.4 M 3.5%	\$199 M 3.4%
Miscellaneous Expenses	\$3.49 M 1.7%	\$18.6 M 1.7%	\$97.8 M 1.7%
Personal Care	\$3.03 M 1.4%	\$16.1 M 1.4%	\$83.8 M 1.5%
Personal Insurance	\$2.14 M 1.0%	\$11.2 M 1.0%	\$56.6 M 1.0%
Reading	\$688 K 0.3%	\$3.65 M 0.3%	\$18.9 M 0.3%
Shelter	\$40.4 M 19.3%	\$214 M 19.3%	\$1.11 B 19.2%
Tobacco	\$1.37 M 0.7%	\$7.35 M 0.7%	\$40.1 M 0.7%
Transportation	\$42.2 M 20.2%	\$224 M 20.2%	\$1.16 B 20.1%
Utilities	\$14.5 M 6.9%	\$77.7 M 7.0%	\$413 M 7.2%

#### Educational Attainment (2014)

	5 Miles	10 Miles	15 Miles
Adult Population Age 25 Years or Over	6,871	36,875	200,824
Elementary (Grade Level 0 to 8)	185 2.7%	869 2.4%	5,486 2.7%
Some High School (Grade Level 9 to 11)	640 9.3%	3,534 9.6%	19,159 9.5%
High School Graduate	3,152 45.9%	16,953 46.0%	88,012 43.8%
Some College	1,255 18.3%	6,656 18.1%	40,105 20.0%
Associate Degree Only	514 7.5%	2,457 6.7%	13,333 6.6%
Bachelor Degree Only	769 11.2%	4,195 11.4%	23,183 11.5%
Graduate Degree	355 5.2%	2,211 6.0%	11,547 5.7%

This report was produced using data from private and government sources deemed to be reliable. The information herein is provided without representation or warranty.

# EXPANDED PROFILE

2000-2010 Census, 2014 Estimates with 2019 Projections

Calculated using Proportional Block Groups

Lat/Lon: 41.0994/-80.9487

RF5

## Mahoning Ave & S Pricetown Rd

### Lake Milton, OH

#### Units In Structure (2010)

	5 Miles		10 Miles		15 Miles	
1 Detached Unit	3,227	84.6%	16,311	77.9%	92,163	75.4%
1 Attached Unit	104	2.7%	724	3.5%	4,220	3.5%
2 to 4 Units	113	3.0%	1,143	5.5%	8,178	6.7%
5 to 9 Units	57	1.5%	432	2.1%	4,600	3.8%
10 to 19 Units	3	0.1%	122	0.6%	3,344	2.7%
20 to 49 Units	1	-	171	0.8%	2,051	1.7%
50 or More Units	2	-	171	0.8%	2,912	2.4%
Mobile Home or Trailer	309	8.1%	1,860	8.9%	4,806	3.9%
Other Structure	-	-	1	-	4	-

#### Homes Built By Year (2010)

	5 Miles		10 Miles		15 Miles	
Homes Built 2005 or later	145	3.8%	722	3.4%	3,176	2.6%
Homes Built 2000 to 2004	250	6.6%	1,554	7.4%	5,808	4.8%
Homes Built 1990 to 1999	654	17.2%	3,324	15.9%	12,740	10.4%
Homes Built 1980 to 1989	342	9.0%	2,115	10.1%	9,630	7.9%
Homes Built 1970 to 1979	679	17.8%	3,699	17.7%	18,518	15.1%
Homes Built 1960 to 1969	397	10.4%	2,199	10.5%	16,417	13.4%
Homes Built 1950 to 1959	491	12.9%	2,574	12.3%	21,823	17.8%
Homes Built Before 1949	856	22.4%	4,747	22.7%	34,165	27.9%

#### Home Values (2010)

	5 Miles		10 Miles		15 Miles	
Home Values \$1,000,000 or More	4	0.1%	62	0.4%	241	0.3%
Home Values \$500,000 to \$999,999	89	2.8%	204	1.2%	740	0.9%
Home Values \$400,000 to \$499,999	45	1.4%	216	1.3%	923	1.1%
Home Values \$300,000 to \$399,999	155	4.9%	654	3.9%	2,290	2.7%
Home Values \$200,000 to \$299,999	546	17.1%	2,378	14.0%	8,184	9.5%
Home Values \$150,000 to \$199,999	665	20.8%	3,346	19.8%	11,969	13.9%
Home Values \$100,000 to \$149,999	703	22.0%	4,072	24.1%	19,448	22.6%
Home Values \$70,000 to \$99,999	491	15.4%	2,756	16.3%	20,062	23.3%
Home Values \$50,000 to \$69,999	159	5.0%	1,057	6.2%	9,933	11.6%
Home Values \$25,000 to \$49,999	115	3.6%	924	5.5%	6,460	7.5%
Home Values Under \$25,000	221	6.9%	1,263	7.5%	5,669	6.6%
Owner-Occupied Median Home Value	\$142,408		\$129,783		\$110,287	
Renter-Occupied Median Rent	\$503		\$512		\$492	

#### Transportation To Work (2010)

	5 Miles		10 Miles		15 Miles	
Drive to Work Alone	3,713	88.9%	20,165	88.5%	105,529	87.6%
Drive to Work in Carpool	284	6.8%	1,444	6.3%	8,076	6.7%
Travel to Work by Public Transportation	12	0.3%	169	0.7%	1,079	0.9%
Drive to Work on Motorcycle	-	-	11	-	88	0.1%
Walk or Bicycle to Work	34	0.8%	229	1.0%	1,930	1.6%
Other Means	50	1.2%	180	0.8%	881	0.7%
Work at Home	87	2.1%	583	2.6%	2,900	2.4%

#### Travel Time (2010)

	5 Miles		10 Miles		15 Miles	
Travel to Work in 14 Minutes or Less	937	22.9%	5,437	24.5%	40,070	34.1%
Travel to Work in 15 to 29 Minutes	1,584	38.7%	9,056	40.8%	47,088	40.0%
Travel to Work in 30 to 59 Minutes	1,295	31.6%	6,206	28.0%	23,794	20.2%
Travel to Work in 60 Minutes or More	275	6.7%	1,501	6.8%	6,632	5.6%
Average Minutes Travel to Work	25.1		23.3		19.2	

This report was produced using data from private and government sources deemed to be reliable. The information herein is provided without representation or warranty.