



Sky Harbor Business Park Sublease Available

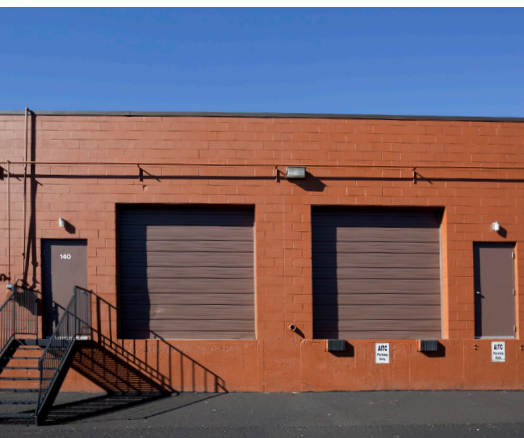
Highlights

- > Easy access to Arapahoe Rd., I-25, Parker Rd., and Centennial
- > Dock High and Drive-In
- > High Image Office
- > Business Park Setting

7012 S. Revere Pky. | Unit 150
Centennial, CO 80112

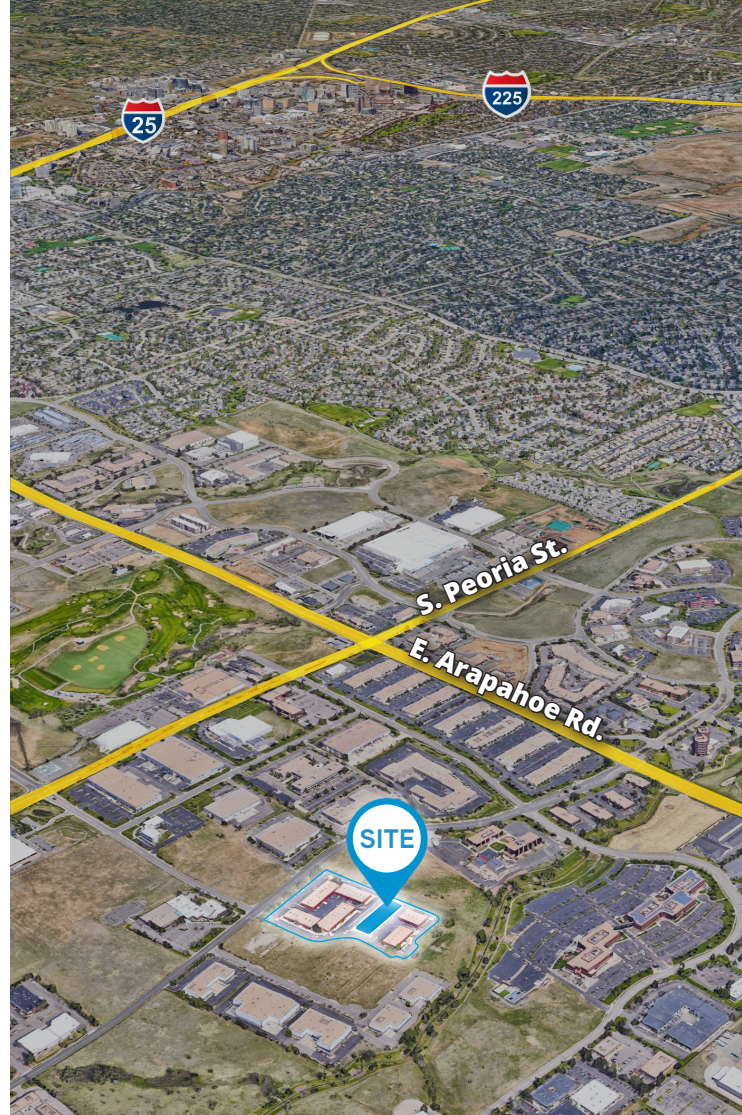
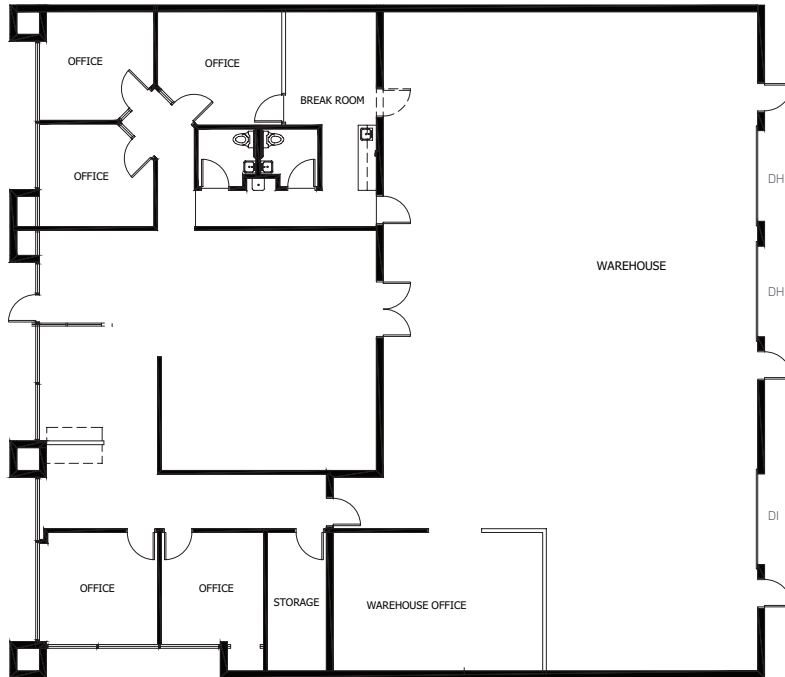
Building Information

Unit Size:	6,238 SF
Office:	50%
Loading:	Two (2) Dock High & One (1) Drive-In Door
Clear Height:	16'
Sprinkler:	None
Construction:	1983
Parking:	2.7:1,000 SF
Lease Rate:	\$13.52/SF NNN
Estimated Op. Ex.:	\$9.19/SF (2024)
Availability:	Immediately
Term:	6/30/2028



For Sublease

Floor Plan



Contact:

Riggs Winz

+1 303 283 4571

riggs.winz@colliers.com

This communication has been prepared by Colliers Denver for advertising and/or general information only. Colliers Denver makes no guarantees, representations or warranties of any kind, expressed or implied, regarding the information including, but not limited to, warranties of content, accuracy and reliability. Any interested party should undertake their own inquiries as to the accuracy of the information. Colliers Denver excludes unequivocally all inferred or implied terms, conditions and warranties arising out of this document and excludes all liability for loss and damages arising there from. This publication is the copyrighted property of Colliers Denver and/or its licensor(s). © 2022. All rights reserved. This communication is not intended to cause or induce breach of an existing listing agreement.



4643 S. Ulster Street, Suite 1000
Denver, CO 80237
P: +1 303 745 5800