

Development Opportunity

7370 Blackmon Road, Columbus, GA

Property Overview

Development Opportunity adjacent to Walmart Neighborhood Grocery on Blackmon Road.

Site is approximately 1.36 acres of land. Property is visible from Blackmon Road and located just in front of Ace Hardware.

This site is an excellent location for development of office space, retail, & hospitality. There is easy access to Hwy 80, I-185, & Hwy 85.

Area occupants include Walmart Neighborhood Grocery, Georgia Military College Columbus' campus, and Ace Hardware.

Offering Summary

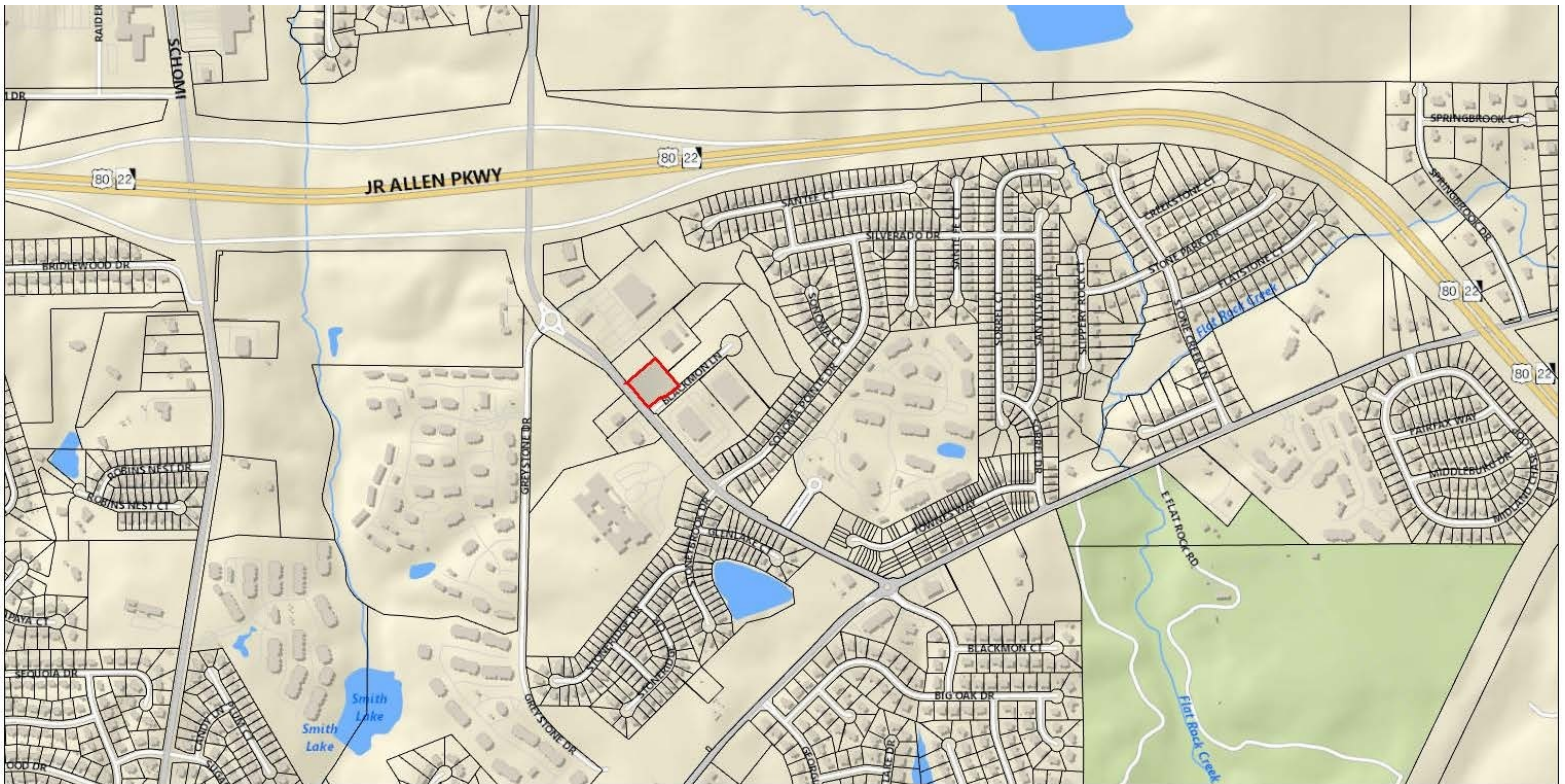
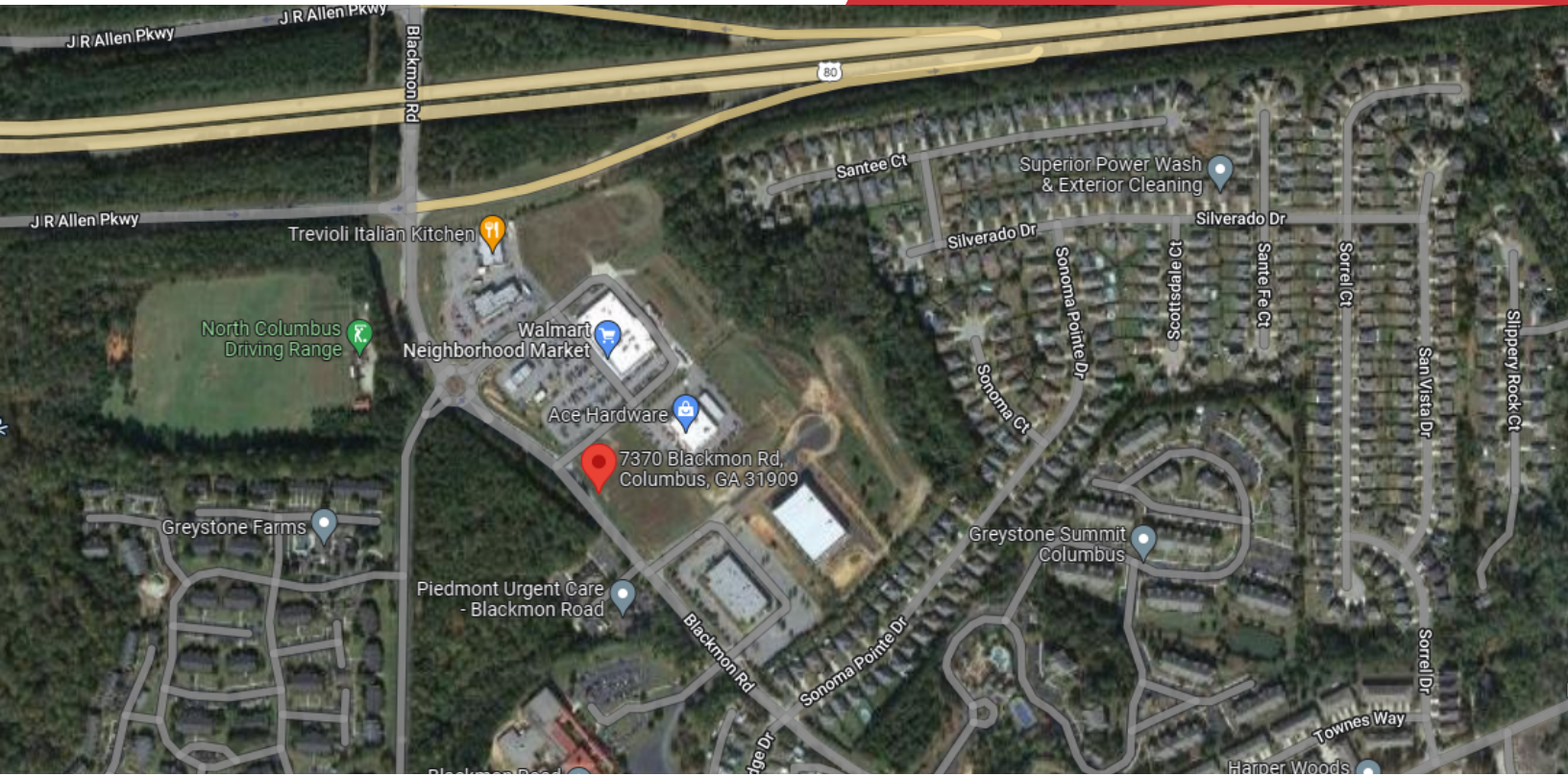
Sale Price: \$899,000

Lot Size: 1.368 Acres

For More Information

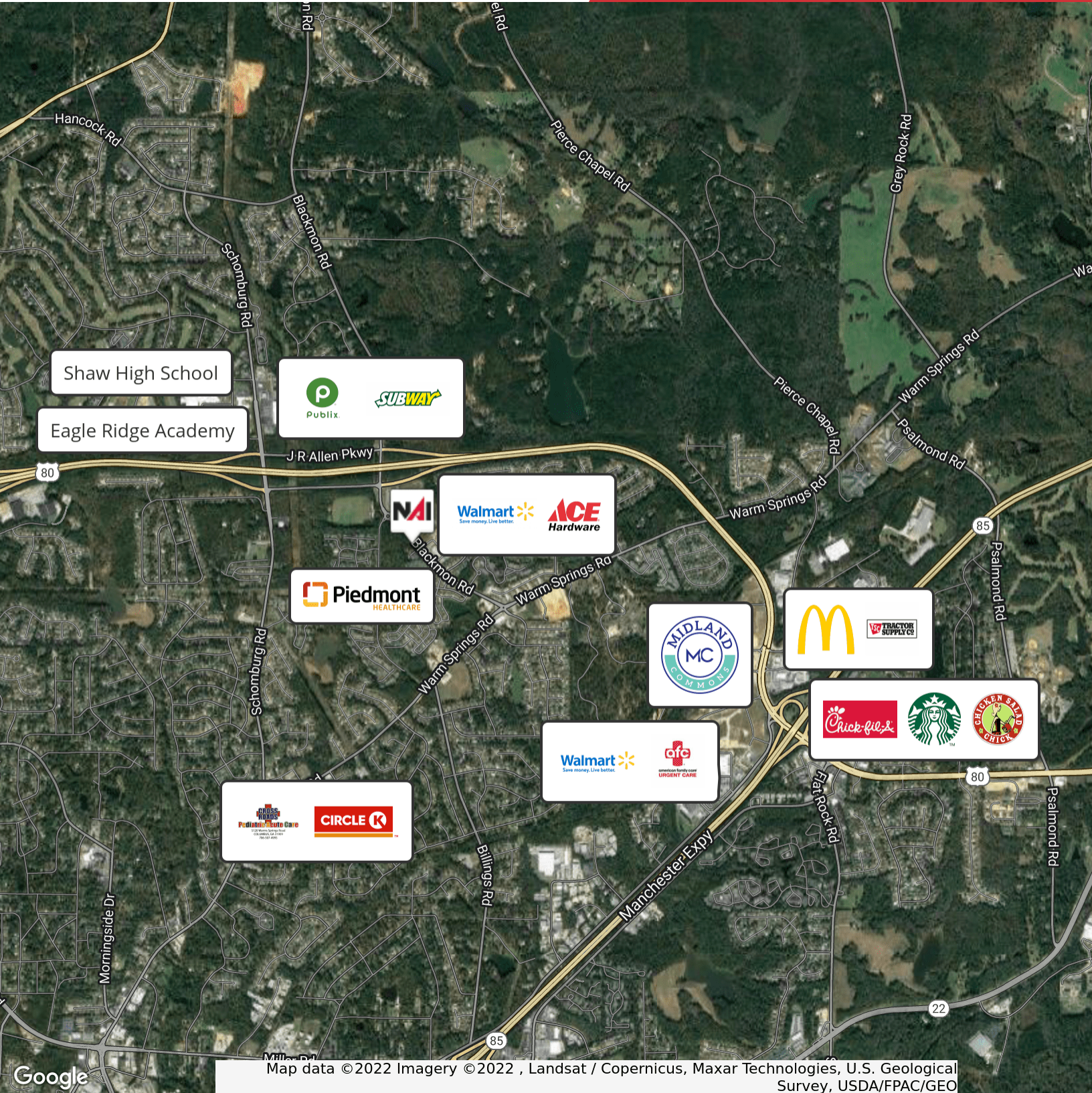
Lakshmi Karthik

Commercial Advisor
O: 706 660 5418 | C: 706 332 0031
lkarthik@g2cre.com



We obtained the information above from sources we believe to be reliable. However, we have not verified its accuracy and make no guarantee, warranty or representation about it. It is submitted subject to the possibility of errors, omissions, change of price, rental or other conditions, prior sale, lease or financing, or withdrawal without notice. We include projections, opinions, assumptions or estimates for example only, and they may not represent current or future performance of the property. You and your tax and legal advisors should conduct your own investigation of the property and transaction.

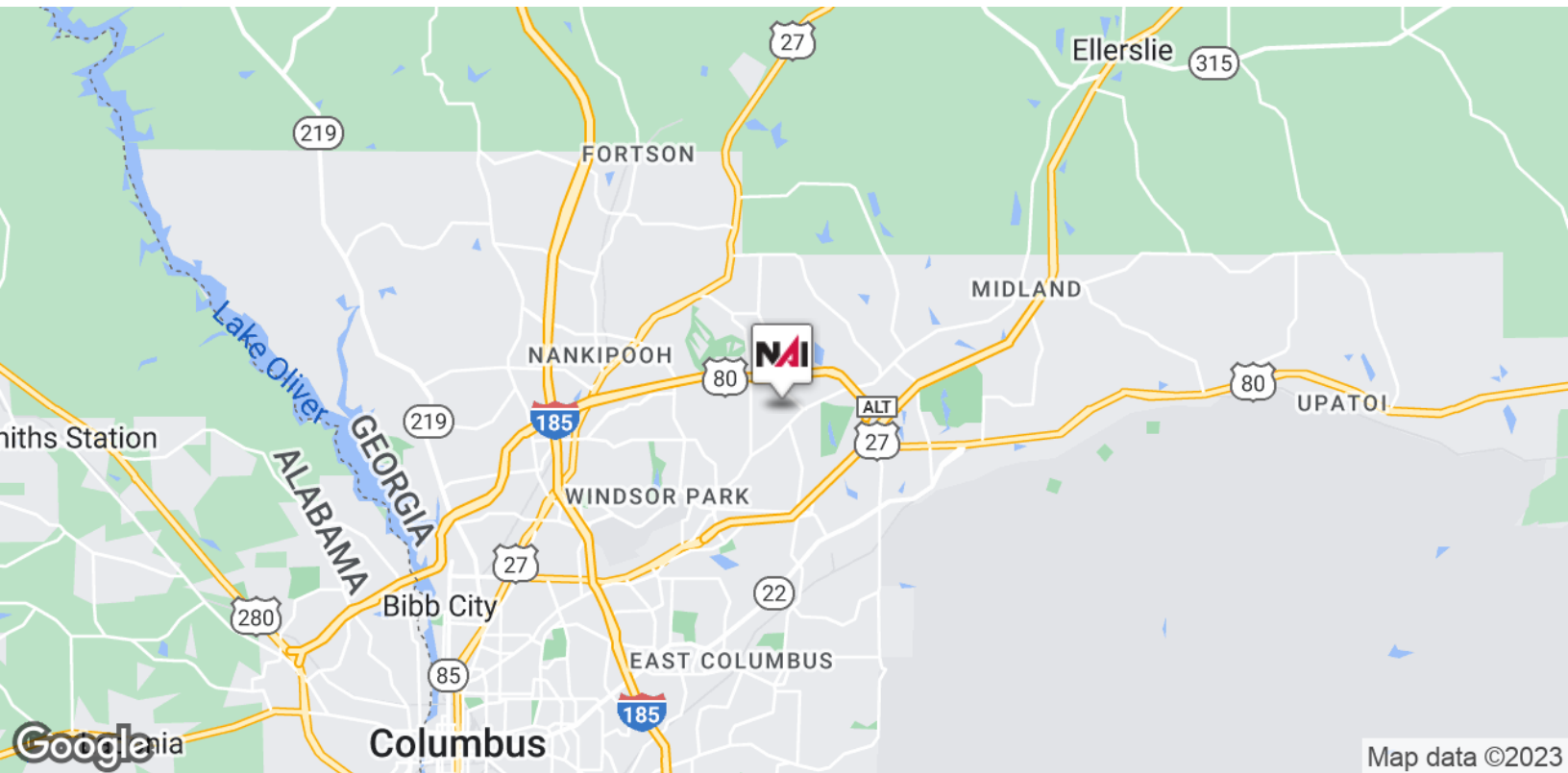
Post Office Box 4529
Columbus, GA 31904
706 660 5418 tel
G2cre.com



Google
Map data ©2022 Imagery ©2022 , Landsat / Copernicus, Maxar Technologies, U.S. Geological Survey, USDA/FPAC/GEO

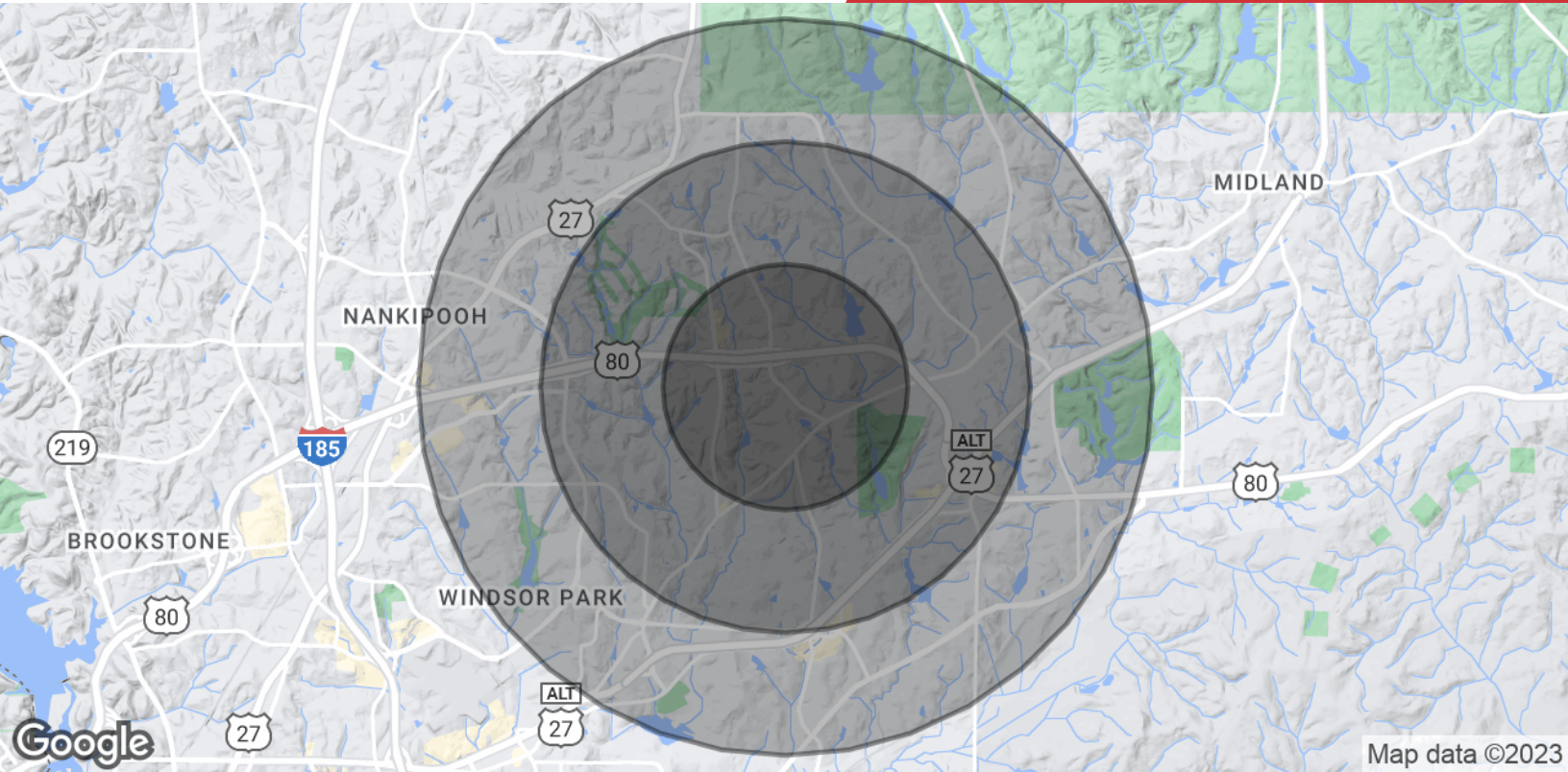
We obtained the information above from sources we believe to be reliable. However, we have not verified its accuracy and make no guarantee, warranty or representation about it. It is submitted subject to the possibility of errors, omissions, change of price, rental or other conditions, prior sale, lease or financing, or withdrawal without notice. We include projections, opinions, assumptions or estimates for example only, and they may not represent current or future performance of the property. You and your tax and legal advisors should conduct your own investigation of the property and transaction.

Post Office Box 4529
Columbus, GA 31904
706 660 5418 tel
G2cre.com



We obtained the information above from sources we believe to be reliable. However, we have not verified its accuracy and make no guarantee, warranty or representation about it. It is submitted subject to the possibility of errors, omissions, change of price, rental or other conditions, prior sale, lease or financing, or withdrawal without notice. We include projections, opinions, assumptions or estimates for example only, and they may not represent current or future performance of the property. You and your tax and legal advisors should conduct your own investigation of the property and transaction.

Post Office Box 4529
Columbus, GA 31904
706 660 5418 tel
G2cre.com



Population

	1 Mile	2 Miles	3 Miles
Total Population	5,357	23,384	43,361
Average Age	35.5	34.5	34.3
Average Age (Male)	34.7	34.0	33.0
Average Age (Female)	35.3	35.2	35.7

Households & Income

	1 Mile	2 Miles	3 Miles
Total Households	2,403	9,740	18,497
# of Persons per HH	2.2	2.4	2.3
Average HH Income	\$68,413	\$69,477	\$70,030
Average House Value	\$184,048	\$175,779	\$176,614

* Demographic data derived from 2020 ACS - US Census