



± 10.93 Acres | For Sale

4620 S. Apple St.

Boise, ID 83716

Property specifications

- Parcel Size: ± 10.93 acres
- Parcel ID: S1036223150
- Zoning: City of Boise M-1D (Light Industrial/Design Review)
- Permitted uses: light industrial, flex/warehouse, storage, etc.
- Planned CC&R's with cross access and parking
- Potential rail access
- Existing buildings included
 - Bldg 1: ± 2,161 SF | Bldg 2 ± 6,011 SF
 - Power: Bldg 1: 277/480 V | Bldg 2: 277/480 V
- Existing utilities on site
- Sale Price: \$4,000,000

Brandon Rawlins
+1 208 982 2427
brandon.rawlins@jll.com

Gavin Williams
+1 208 389 7713
gavin.williams@jll.com

Bronson Rawlins
+208 917 1610
bronson.rawlins@jll.com





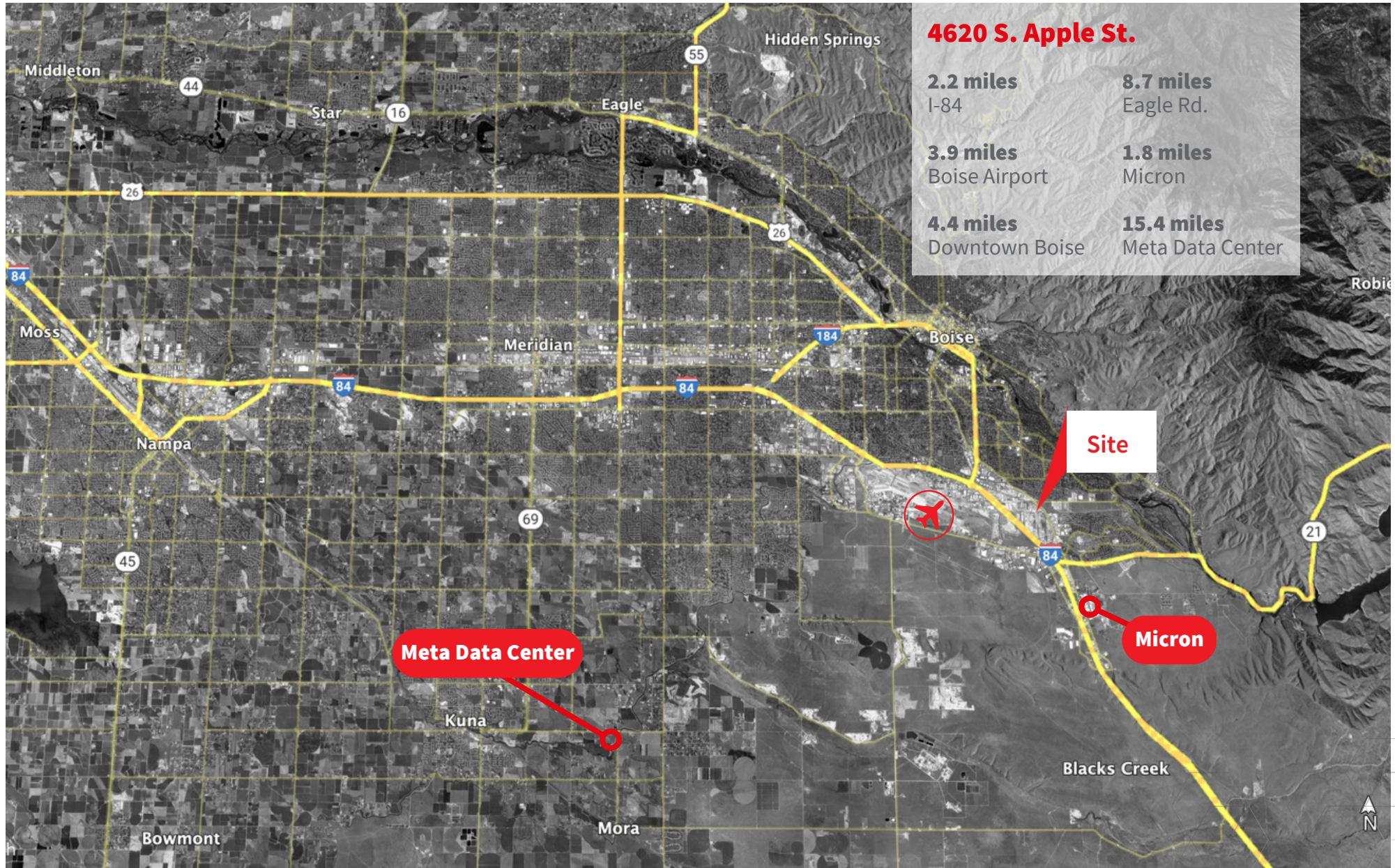
[Click for Street View](#)



[Click for drone video](#)



Regional Map



Detailed Overview Map



JLL

Brandon Rawlins
+1 208 982 2427
brandon.rawlins@jll.com

Gavin Williams
+1 208 389 7713
gavin.williams@jll.com

Bronson Rawlins
+1 208 917 1610
bronson.rawlins@jll.com

Although information has been obtained from sources deemed reliable, JLL does not make any guarantees, warranties or representations, express or implied, as to the completeness or accuracy as to the information contained herein. Any projections, opinions, assumptions or estimates used are for example only. There may be differences between projected and actual results, and those differences may be material. JLL does not accept any liability for any loss or damage suffered by any party resulting from reliance on this information. If the recipient of this information has signed a confidentiality agreement with JLL regarding this matter, this information is subject to the terms of that agreement. ©2023. Jones Lang LaSalle IP, Inc. All rights reserved. ©2023 Jones Lang LaSalle Brokerage, Inc. | 950 W Bannock St Suite 1100, Boise, Idaho 83702